

Stunning Country Home with Acreage

15± ACRES WITH A HOME IN SCOTT COUNTY, MS



Welcome to your new country retreat in Scott County, MS. Upon leaving Highway 21, a 3/10-mile driveway leads to the stunning house overlooking the pond. The 3,500-square-foot home with a spacious 2,000-square-foot wrap-around porch offers panoramic views of the picturesque 5± acre stocked pond filled with bass and bream. The screened back porch is perfect for sunrise views and has a beautiful wood-burning fireplace. The house has a standing-seam metal roof, and approximately 80-85% of the house was crafted from wood harvested from the property. The four bedrooms and three full baths include a living room with a striking 25-foot vaulted ceiling and a stone fireplace reaching the ceiling, equipped with gas logs. Upstairs, a balcony with a sitting area provides a serene spot to gaze over the pond. The kitchen is a chef's dream, featuring custom-built cabinets, granite countertops, and a gas stove. A 500-gallon in-ground propane tank powers the on-demand water heater, stove, and gas logs. Climate control is ensured by two four-ton AC/heating units for the bottom floor and two two-ton units for the top floor. Additionally, there's a convenient 2-car open-style carport with a storage shed and a bathroom with a sink. The property also has a spacious 30x40 pole barn, walled on three sides, providing ample storage for equipment. Call Colby to schedule a viewing and experience the beauty of this property firsthand! Additional Acreage Available



**COLBY
WATSON**

REALTOR®

Office: 601.898.2772

Cell: 601.668.8096

Colby@TomSmithLand.com



Expect More. Get More.

A Real Estate Expert You Can Trust

TomSmithLandandHomes.com

Information is believed to be accurate but not guaranteed.





**A Real Estate Expert
You Can Trust!**

COLBY WATSON
REALTOR®

O: 601.898.2772 C: 601.668.8096

Colby@TomSmithLand.com

TomSmithLandandHomes.com



Expect More. Get More.



Information is believed to be accurate but not guaranteed.



A Real Estate Expert You Can Trust!

COLBY WATSON
REALTOR®

O: 601.898.2772 C: 601.668.8096

Colby@TomSmithLand.com

TomSmithLandandHomes.com



Expect More. Get More.



Information is believed to be accurate but not guaranteed.



**A Real Estate Expert
You Can Trust!**

COLBY WATSON
REALTOR®

O: 601.898.2772 C: 601.668.8096

Colby@TomSmithLand.com

TomSmithLandandHomes.com

**Tom
Smith
LAND AND
HOMES**

Expect More. Get More.

1.800.848.1000
2011-2024
BEST
BROKERAGES

Information is believed to be accurate but not guaranteed.



A Real Estate Expert You Can Trust!

COLBY WATSON
REALTOR®

O: 601.898.2772 C: 601.668.8096

Colby@TomSmithLand.com

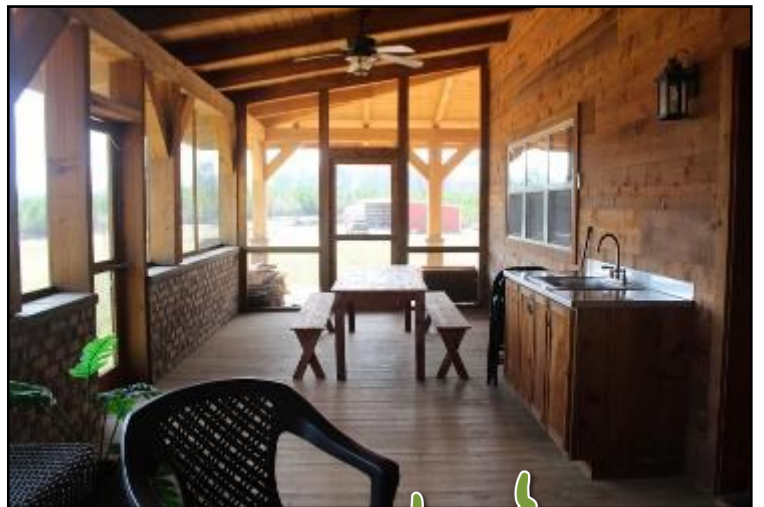
TomSmithLandandHomes.com



Expect More. Get More.



Information is believed to be accurate but not guaranteed.



**A Real Estate Expert
You Can Trust!**

COLBY WATSON
REALTOR®

O: 601.898.2772 C: 601.668.8096

Colby@TomSmithLand.com

TomSmithLandandHomes.com



Expect More. Get More.



Information is believed to be accurate but not guaranteed.



A Real Estate Expert You Can Trust!

COLBY WATSON
REALTOR®

O: 601.898.2772 C: 601.668.8096

Colby@TomSmithLand.com

TomSmithLandandHomes.com



Expect More. Get More.



Information is believed to be accurate but not guaranteed.



**A Real Estate Expert
You Can Trust!**

COLBY WATSON
REALTOR®

O: 601.898.2772 C: 601.668.8096

Colby@TomSmithLand.com

TomSmithLandandHomes.com



Expect More. Get More.



Information is believed to be accurate but not guaranteed.



A Real Estate Expert You Can Trust!

COLBY WATSON
REALTOR®

O: 601.898.2772 C: 601.668.8096

Colby@TomSmithLand.com

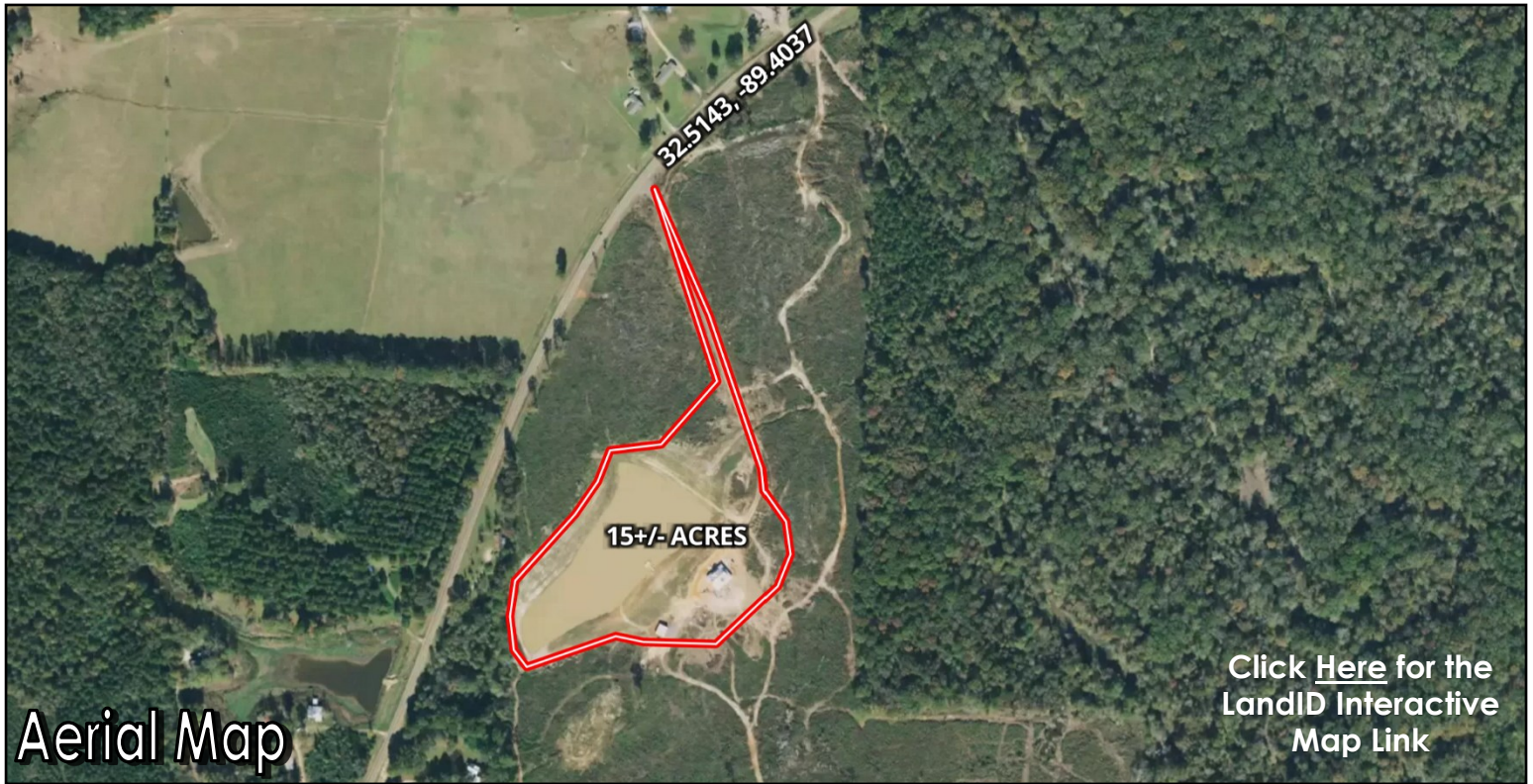
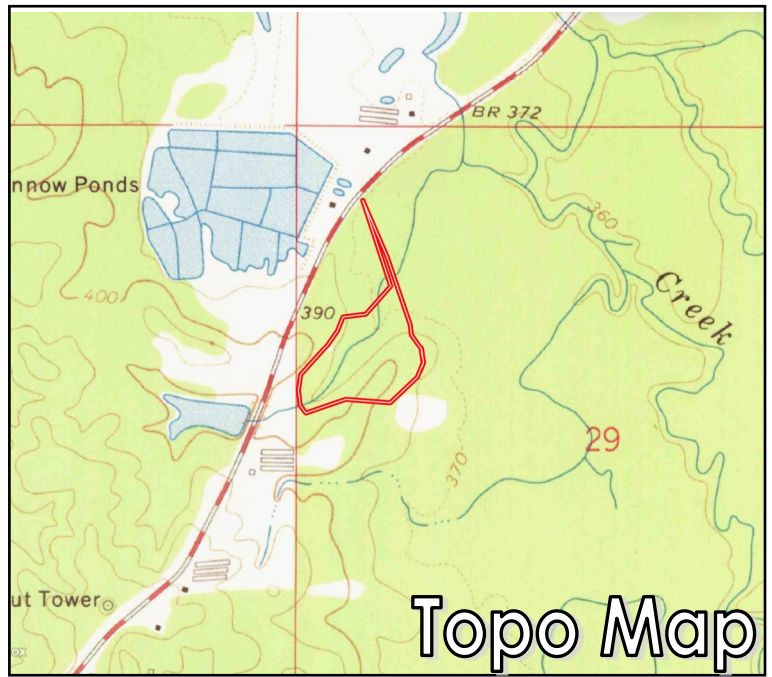
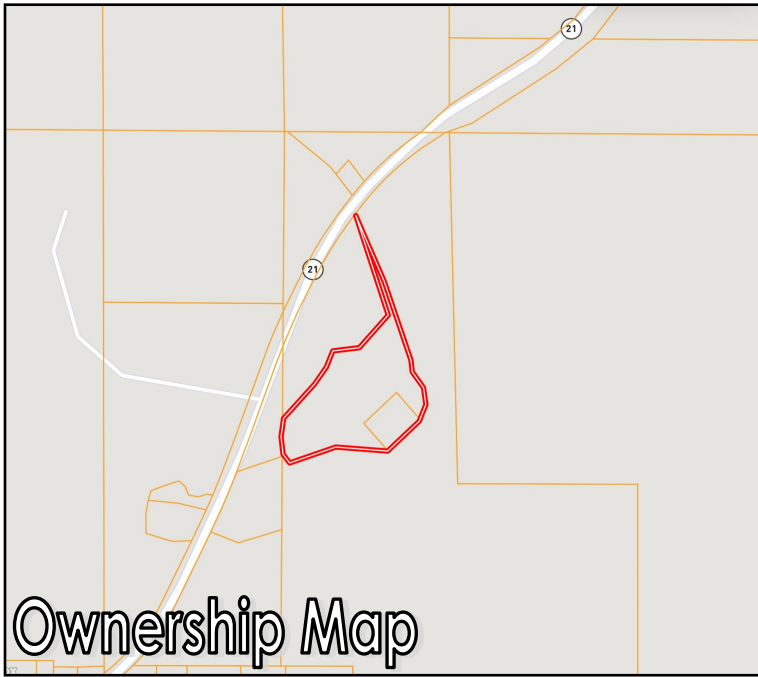
TomSmithLandandHomes.com



Expect More. Get More.



Information is believed to be accurate but not guaranteed.



[Click Here for the LandID Interactive Map Link](#)

A Real Estate Expert
You Can Trust!

COLBY WATSON
REALTOR®

O: 601.898.2772 C: 601.668.8096

Colby@TomSmithLand.com

TomSmithLandandHomes.com

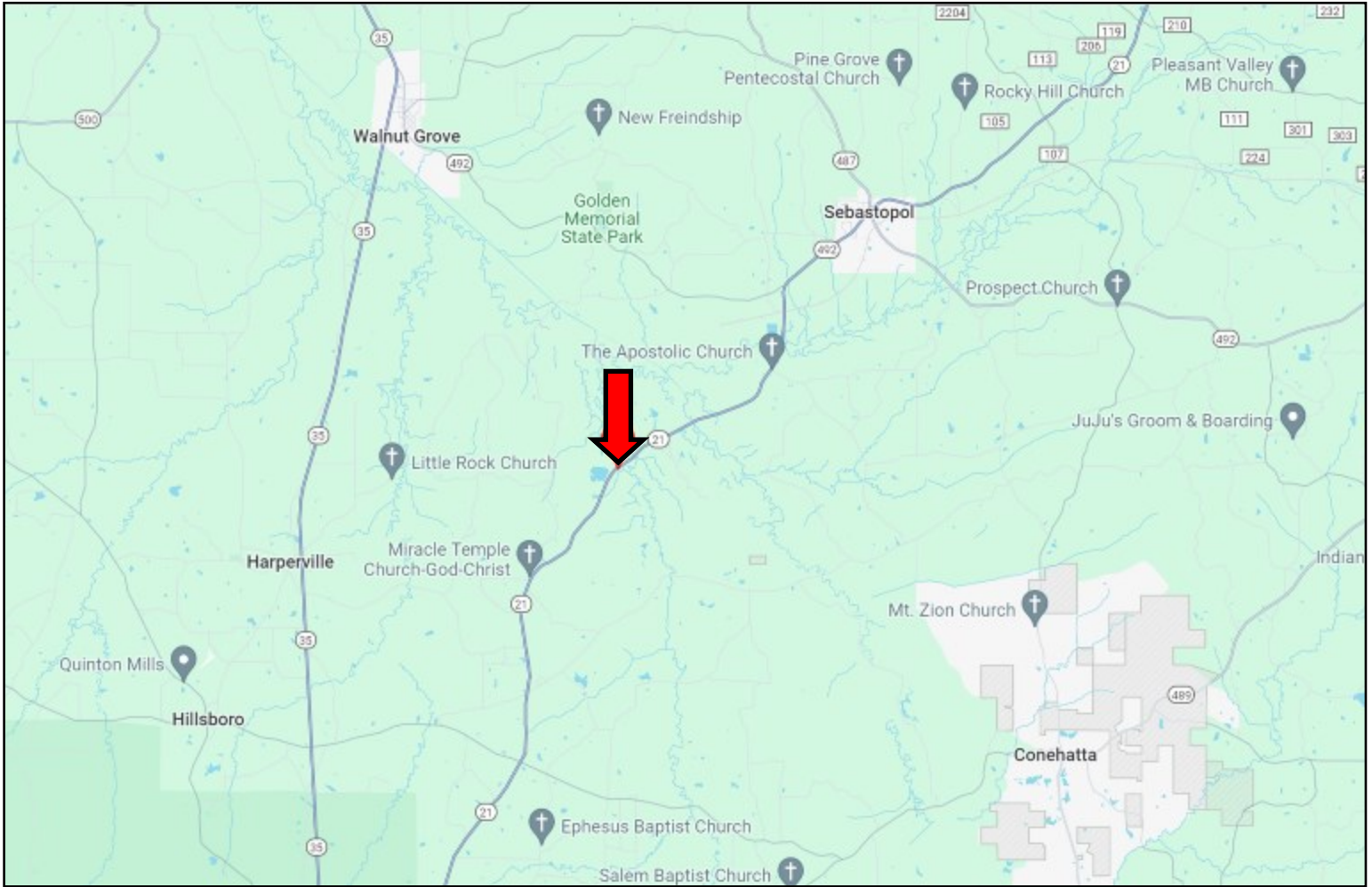


Expect More. Get More.



Information is believed to be accurate but not guaranteed.

Directional Map



DIRECTIONS FROM I-20 AND HWY 35 IN FOREST MS: Take exit 88 towards Forest. Turn left onto Hwy 35 and travel 3.2 miles. Turn right onto Hwy 21 and travel 11.4 miles. The property will be on your right. **11281 Highway 21 Forest, MS, 39074** [GOOGLE MAP LINK](#)



**COLBY
WATSON**

REALTOR®

Office: 601.898.2772

Cell: 601.668.8096

Colby@TomSmithLand.com



Expect More. Get More.

A Real Estate Expert You Can Trust

TomSmithLandandHomes.com

Information is believed to be accurate but not guaranteed.

