

8.63 ACRES

(11)

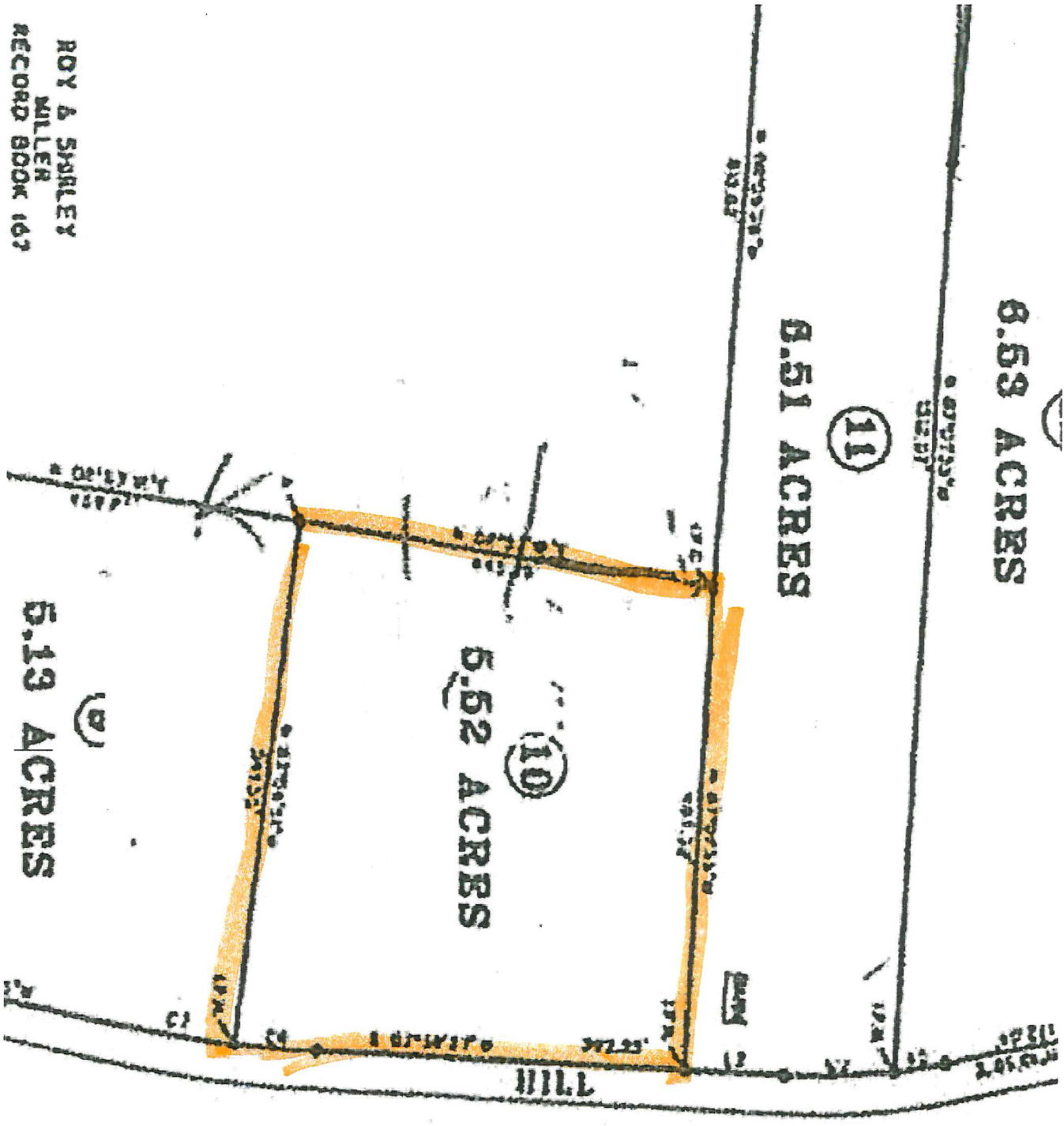
8.51 ACRES

8.52 ACRES

(10)

8.13 ACRES

(9)



ROY A. SHARLEY  
MILLER  
RECORD BOOK 167

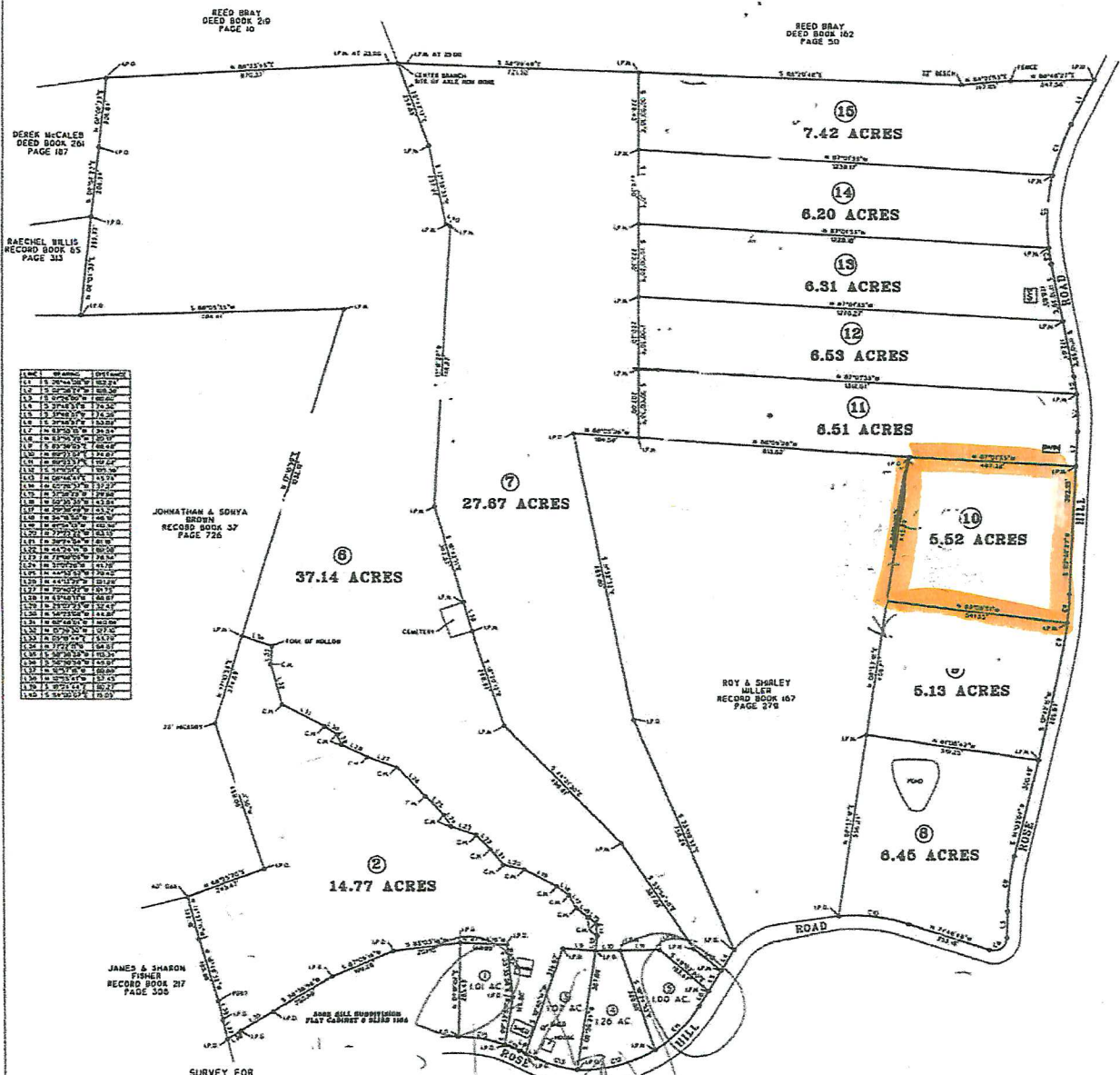
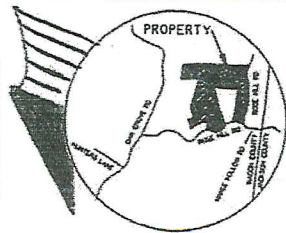
1410  
M.H. 1/25/25



LEGEND --  
 IPD -- IRON PIN OLD  
 IPN -- IRON PIN NEW  
 C.M. --- CENTER MARK

- NOTES:  
 1. NORTH INDEX REFERENCE TO GEODETIC NORTH  
 2. ANGLES AND DISTANCES MEASURED BY TOPCON 2000 TOTAL STATION  
 3. SUBJECT TO ALL RIGHTS OF WAY, EASEMENTS AND RESTRICTIONS OF RECORD.  
 4. SUBJECT TO FINDINGS OF A TITLE REPORT.  
 5. LOTS 1 & 3 ARE WORN AND SHOWN PROPERTY LOTS 6 & 7 OF ROSE HILL SUBDIVISION PLAT CABINET 2 BLADE 100A  
 6. LOTS 4-5 ARE ENCUMBERED BY A 10 FEET WIDE PUBLIC UTILITY EASEMENT AS THEY ADJOIN ROSE HILL ROAD.

LINE	BEARING	DISTANCE
L1	S 89°55'15" W	100.00
L2	S 89°55'15" W	100.00
L3	S 89°55'15" W	100.00
L4	S 89°55'15" W	100.00
L5	S 89°55'15" W	100.00
L6	S 89°55'15" W	100.00
L7	S 89°55'15" W	100.00
L8	S 89°55'15" W	100.00
L9	S 89°55'15" W	100.00
L10	S 89°55'15" W	100.00
L11	S 89°55'15" W	100.00
L12	S 89°55'15" W	100.00
L13	S 89°55'15" W	100.00
L14	S 89°55'15" W	100.00
L15	S 89°55'15" W	100.00
L16	S 89°55'15" W	100.00
L17	S 89°55'15" W	100.00
L18	S 89°55'15" W	100.00
L19	S 89°55'15" W	100.00
L20	S 89°55'15" W	100.00
L21	S 89°55'15" W	100.00
L22	S 89°55'15" W	100.00
L23	S 89°55'15" W	100.00
L24	S 89°55'15" W	100.00
L25	S 89°55'15" W	100.00
L26	S 89°55'15" W	100.00
L27	S 89°55'15" W	100.00
L28	S 89°55'15" W	100.00
L29	S 89°55'15" W	100.00
L30	S 89°55'15" W	100.00
L31	S 89°55'15" W	100.00
L32	S 89°55'15" W	100.00
L33	S 89°55'15" W	100.00
L34	S 89°55'15" W	100.00
L35	S 89°55'15" W	100.00
L36	S 89°55'15" W	100.00
L37	S 89°55'15" W	100.00
L38	S 89°55'15" W	100.00
L39	S 89°55'15" W	100.00
L40	S 89°55'15" W	100.00
L41	S 89°55'15" W	100.00
L42	S 89°55'15" W	100.00
L43	S 89°55'15" W	100.00
L44	S 89°55'15" W	100.00
L45	S 89°55'15" W	100.00
L46	S 89°55'15" W	100.00
L47	S 89°55'15" W	100.00
L48	S 89°55'15" W	100.00
L49	S 89°55'15" W	100.00
L50	S 89°55'15" W	100.00
L51	S 89°55'15" W	100.00
L52	S 89°55'15" W	100.00
L53	S 89°55'15" W	100.00
L54	S 89°55'15" W	100.00
L55	S 89°55'15" W	100.00
L56	S 89°55'15" W	100.00
L57	S 89°55'15" W	100.00
L58	S 89°55'15" W	100.00
L59	S 89°55'15" W	100.00
L60	S 89°55'15" W	100.00
L61	S 89°55'15" W	100.00
L62	S 89°55'15" W	100.00
L63	S 89°55'15" W	100.00
L64	S 89°55'15" W	100.00
L65	S 89°55'15" W	100.00
L66	S 89°55'15" W	100.00
L67	S 89°55'15" W	100.00
L68	S 89°55'15" W	100.00
L69	S 89°55'15" W	100.00
L70	S 89°55'15" W	100.00
L71	S 89°55'15" W	100.00
L72	S 89°55'15" W	100.00
L73	S 89°55'15" W	100.00
L74	S 89°55'15" W	100.00
L75	S 89°55'15" W	100.00
L76	S 89°55'15" W	100.00
L77	S 89°55'15" W	100.00
L78	S 89°55'15" W	100.00
L79	S 89°55'15" W	100.00
L80	S 89°55'15" W	100.00
L81	S 89°55'15" W	100.00
L82	S 89°55'15" W	100.00
L83	S 89°55'15" W	100.00
L84	S 89°55'15" W	100.00
L85	S 89°55'15" W	100.00
L86	S 89°55'15" W	100.00
L87	S 89°55'15" W	100.00
L88	S 89°55'15" W	100.00
L89	S 89°55'15" W	100.00
L90	S 89°55'15" W	100.00
L91	S 89°55'15" W	100.00
L92	S 89°55'15" W	100.00
L93	S 89°55'15" W	100.00
L94	S 89°55'15" W	100.00
L95	S 89°55'15" W	100.00
L96	S 89°55'15" W	100.00
L97	S 89°55'15" W	100.00
L98	S 89°55'15" W	100.00
L99	S 89°55'15" W	100.00
L100	S 89°55'15" W	100.00



LINE	BEARING	DISTANCE
L1	S 89°55'15" W	100.00
L2	S 89°55'15" W	100.00
L3	S 89°55'15" W	100.00
L4	S 89°55'15" W	100.00
L5	S 89°55'15" W	100.00
L6	S 89°55'15" W	100.00
L7	S 89°55'15" W	100.00
L8	S 89°55'15" W	100.00
L9	S 89°55'15" W	100.00
L10	S 89°55'15" W	100.00
L11	S 89°55'15" W	100.00
L12	S 89°55'15" W	100.00
L13	S 89°55'15" W	100.00
L14	S 89°55'15" W	100.00
L15	S 89°55'15" W	100.00
L16	S 89°55'15" W	100.00
L17	S 89°55'15" W	100.00
L18	S 89°55'15" W	100.00
L19	S 89°55'15" W	100.00
L20	S 89°55'15" W	100.00
L21	S 89°55'15" W	100.00
L22	S 89°55'15" W	100.00
L23	S 89°55'15" W	100.00
L24	S 89°55'15" W	100.00
L25	S 89°55'15" W	100.00
L26	S 89°55'15" W	100.00
L27	S 89°55'15" W	100.00
L28	S 89°55'15" W	100.00
L29	S 89°55'15" W	100.00
L30	S 89°55'15" W	100.00
L31	S 89°55'15" W	100.00
L32	S 89°55'15" W	100.00
L33	S 89°55'15" W	100.00
L34	S 89°55'15" W	100.00
L35	S 89°55'15" W	100.00
L36	S 89°55'15" W	100.00
L37	S 89°55'15" W	100.00
L38	S 89°55'15" W	100.00
L39	S 89°55'15" W	100.00
L40	S 89°55'15" W	100.00
L41	S 89°55'15" W	100.00
L42	S 89°55'15" W	100.00
L43	S 89°55'15" W	100.00
L44	S 89°55'15" W	100.00
L45	S 89°55'15" W	100.00
L46	S 89°55'15" W	100.00
L47	S 89°55'15" W	100.00
L48	S 89°55'15" W	100.00
L49	S 89°55'15" W	100.00
L50	S 89°55'15" W	100.00
L51	S 89°55'15" W	100.00
L52	S 89°55'15" W	100.00
L53	S 89°55'15" W	100.00
L54	S 89°55'15" W	100.00
L55	S 89°55'15" W	100.00
L56	S 89°55'15" W	100.00
L57	S 89°55'15" W	100.00
L58	S 89°55'15" W	100.00
L59	S 89°55'15" W	100.00
L60	S 89°55'15" W	100.00
L61	S 89°55'15" W	100.00
L62	S 89°55'15" W	100.00
L63	S 89°55'15" W	100.00
L64	S 89°55'15" W	100.00
L65	S 89°55'15" W	100.00
L66	S 89°55'15" W	100.00
L67	S 89°55'15" W	100.00
L68	S 89°55'15" W	100.00
L69	S 89°55'15" W	100.00
L70	S 89°55'15" W	100.00
L71	S 89°55'15" W	100.00
L72	S 89°55'15" W	100.00
L73	S 89°55'15" W	100.00
L74	S 89°55'15" W	100.00
L75	S 89°55'15" W	100.00
L76	S 89°55'15" W	100.00
L77	S 89°55'15" W	100.00
L78	S 89°55'15" W	100.00
L79	S 89°55'15" W	100.00
L80	S 89°55'15" W	100.00
L81	S 89°55'15" W	100.00
L82	S 89°55'15" W	100.00
L83	S 89°55'15" W	100.00
L84	S 89°55'15" W	100.00
L85	S 89°55'15" W	100.00
L86	S 89°55'15" W	100.00
L87	S 89°55'15" W	100.00
L88	S 89°55'15" W	100.00
L89	S 89°55'15" W	100.00
L90	S 89°55'15" W	100.00
L91	S 89°55'15" W	100.00
L92	S 89°55'15" W	100.00
L93	S 89°55'15" W	100.00
L94	S 89°55'15" W	100.00
L95	S 89°55'15" W	100.00
L96	S 89°55'15" W	100.00
L97	S 89°55'15" W	100.00
L98	S 89°55'15" W	100.00
L99	S 89°55'15" W	100.00
L100	S 89°55'15" W	100.00

SURVEY FOR  
**JOHNATHAN & SONYA BROWN**  
 7th CIVIL DISTRICT MACON COUNTY, TENNESSEE  
 DEED REFERENCE -- RECORD BOOK 71 PAGE 653  
 TAX MAP 54 PARCEL 6.00, 8.00 & 10.00  
 SCALE 1" = 200' 04/29/2021

I HEREBY CERTIFY THIS IS A CATEGORY 3 SURVEY AND THE RATIO OF PRECISION OF THE UNADJUSTED SURVEY IS 1: 5000 AS SHOWN HEREON.  
 JOB 202302  
**HOLLAND LAND SURVEYING**  
 275 HIGHT LAKE  
 LAURELHURST, TN 37083  
 615-633-6760