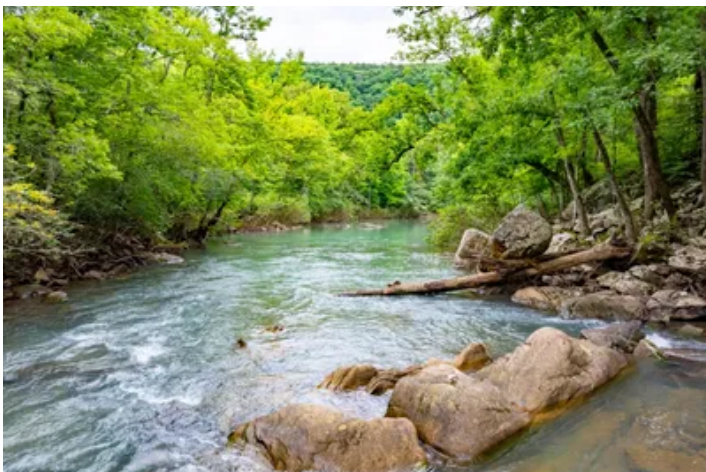
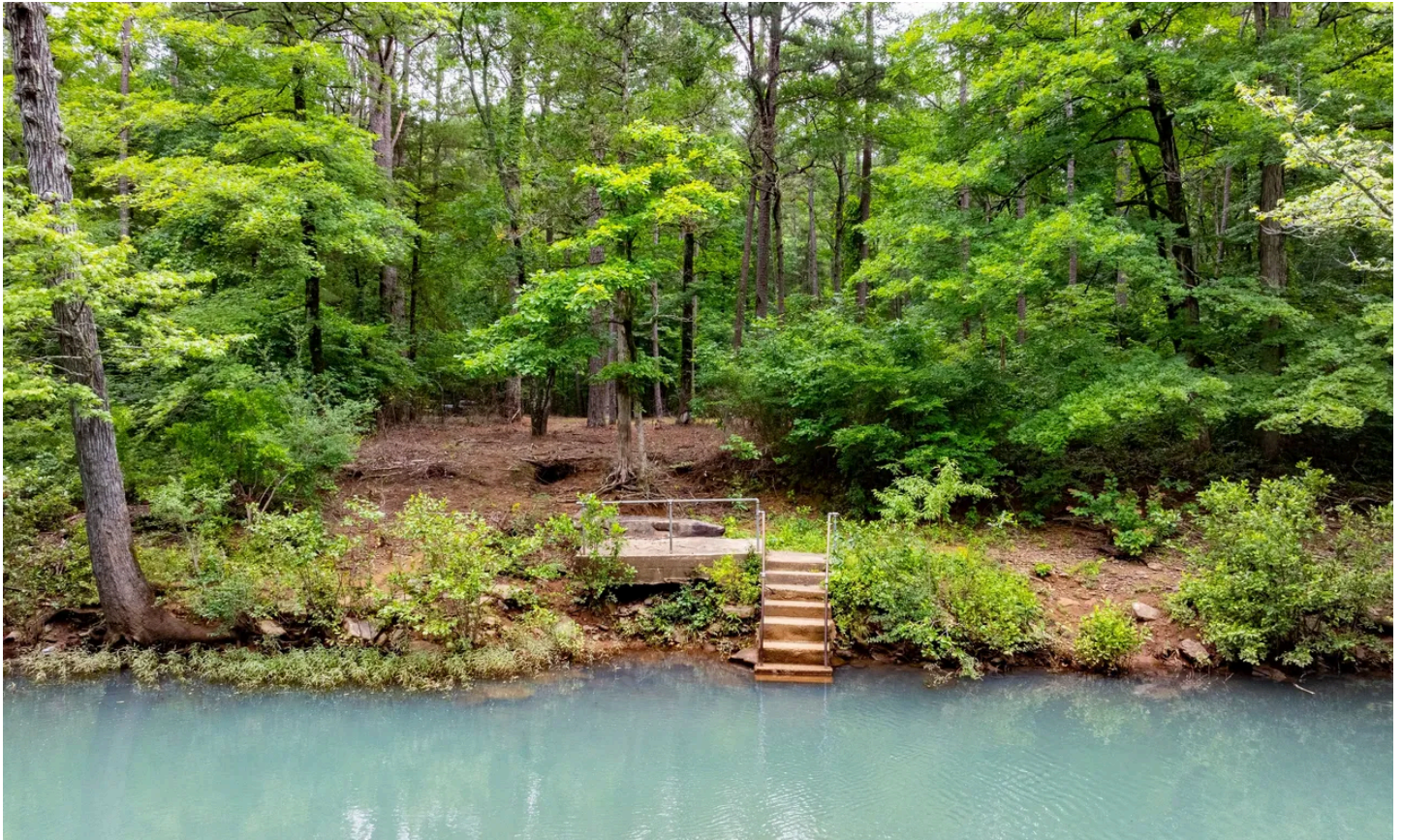


15 +/- Riverfront & National Forest Acreage | Paradise |
Hector, AR | Pope County
Middle Fork Road
Hector, AR 72843

\$150,000
15± Acres
Pope County



15 +/- Riverfront & National Forest Acreage | Paradise | Hector, AR | Pope County
Hector, AR / Pope County

SUMMARY

Address

Middle Fork Road null

City, State Zip

Hector, AR 72843

County

Pope County

Type

Recreational Land, Riverfront

Latitude / Longitude

35.548373 / -92.94509

Acreage

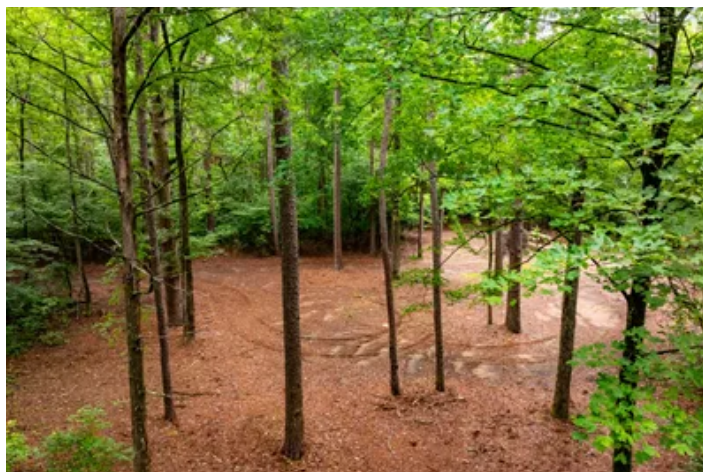
15

Price

\$150,000

Property Website

<https://www.mossoakproperties.com/property/15-riverfront-national-forest-acreage-paradise-hector-ar-pope-county/pope/arkansas/108601/>



PROPERTY DESCRIPTION

Escape to your own private wilderness retreat with this rare **15 +/- acre** property in **Hector, Arkansas**, completely surrounded by the Ozark National Forest. With **no neighboring private land** and over **1.2 million acres +/- of protected public land** at your doorstep, this is the ultimate destination for outdoor enthusiasts seeking privacy, adventure, and breathtaking natural beauty.

The **crystal-clear Middle Fork Illinois Bayou** flows along the property, providing a **year-round water source** and exceptional opportunities for fishing, swimming, kayaking, and horseback riding. Whether you're casting a line, cooling off on a summer day, or simply enjoying the peaceful sounds of the water, this property offers a **true connection to nature**.

A **forest road divides the tract**, creating **two unique experiences**. One side features **beautiful river frontage**, while the opposite side offers a trail leading to the **mountaintop**, where spectacular **views of the Ozark Mountains** await.

This completely **off-grid property** is ideal for a **hunting camp, recreational retreat, weekend getaway, or future cabin site**. Ride your **UTV** directly onto **miles of forest roads and trails**, explore on horseback, hike endless terrain, hunt, fish, and enjoy the freedom that only a property surrounded by **National Forest** can provide.

Properties like this are exceptionally **rare**. If you've been searching for a secluded **Ozark paradise** with water, views, and unlimited recreational opportunities, this is one you won't want to miss.

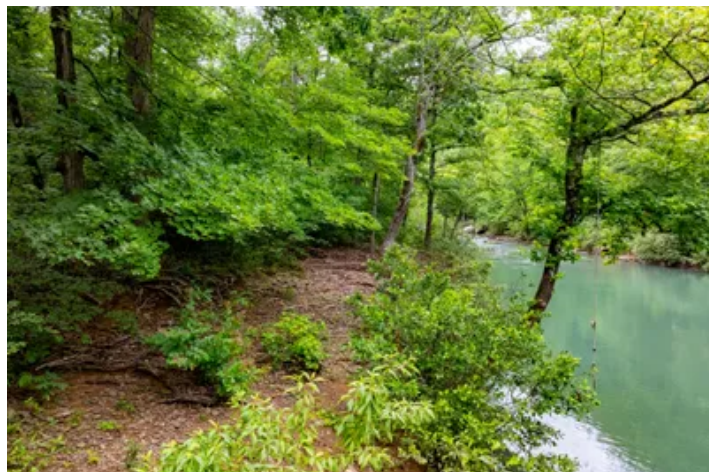
Proudly listed by **Mossy Oak Properties Selling Arkansas**, [870-495-2123](tel:870-495-2123) .

Contact Listing Agent, **Krystn Bourgeois**, at [501-270-5276](tel:501-270-5276) .

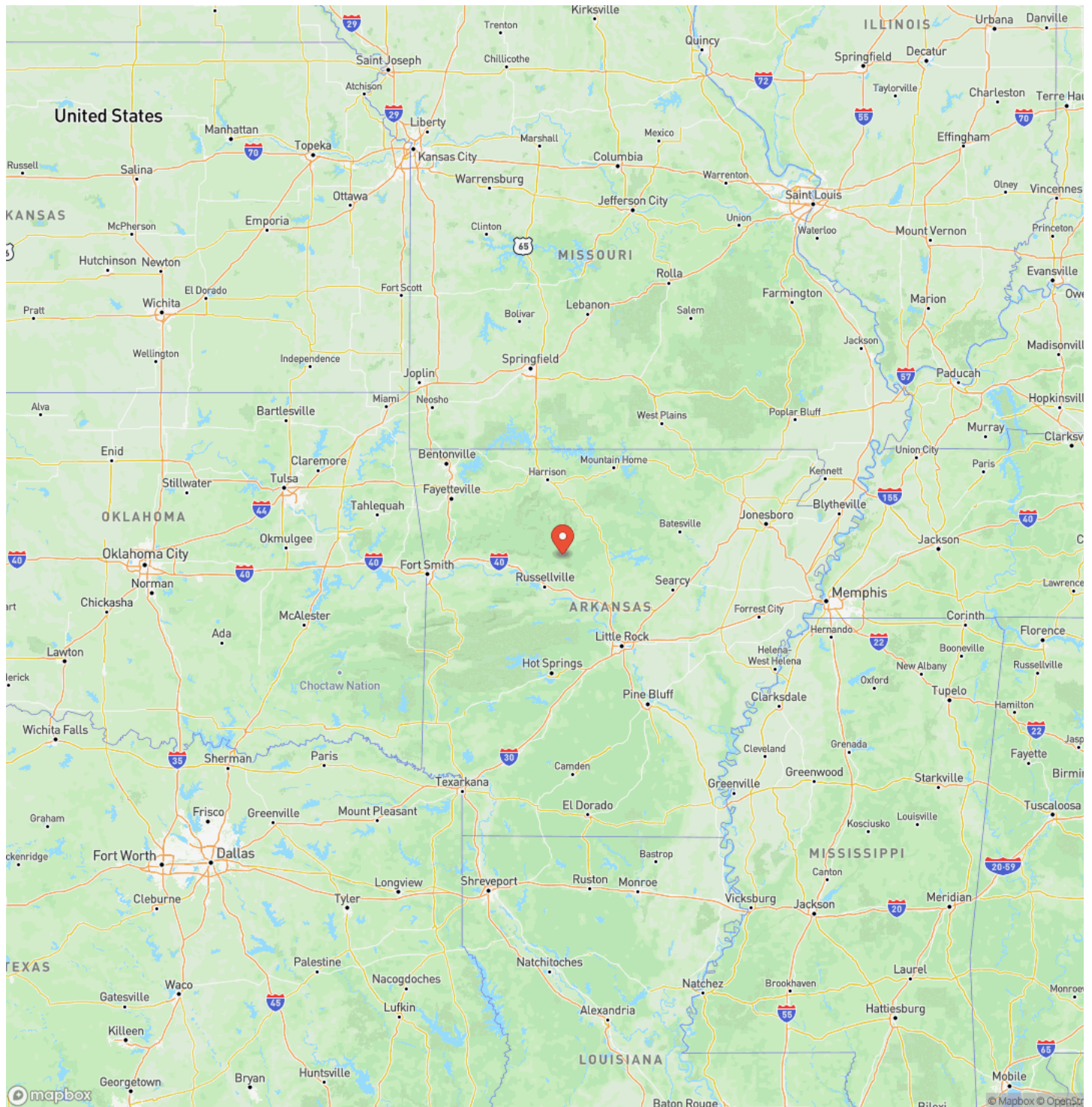
Equal Housing Opportunity.

www.WeSellArkansas.com

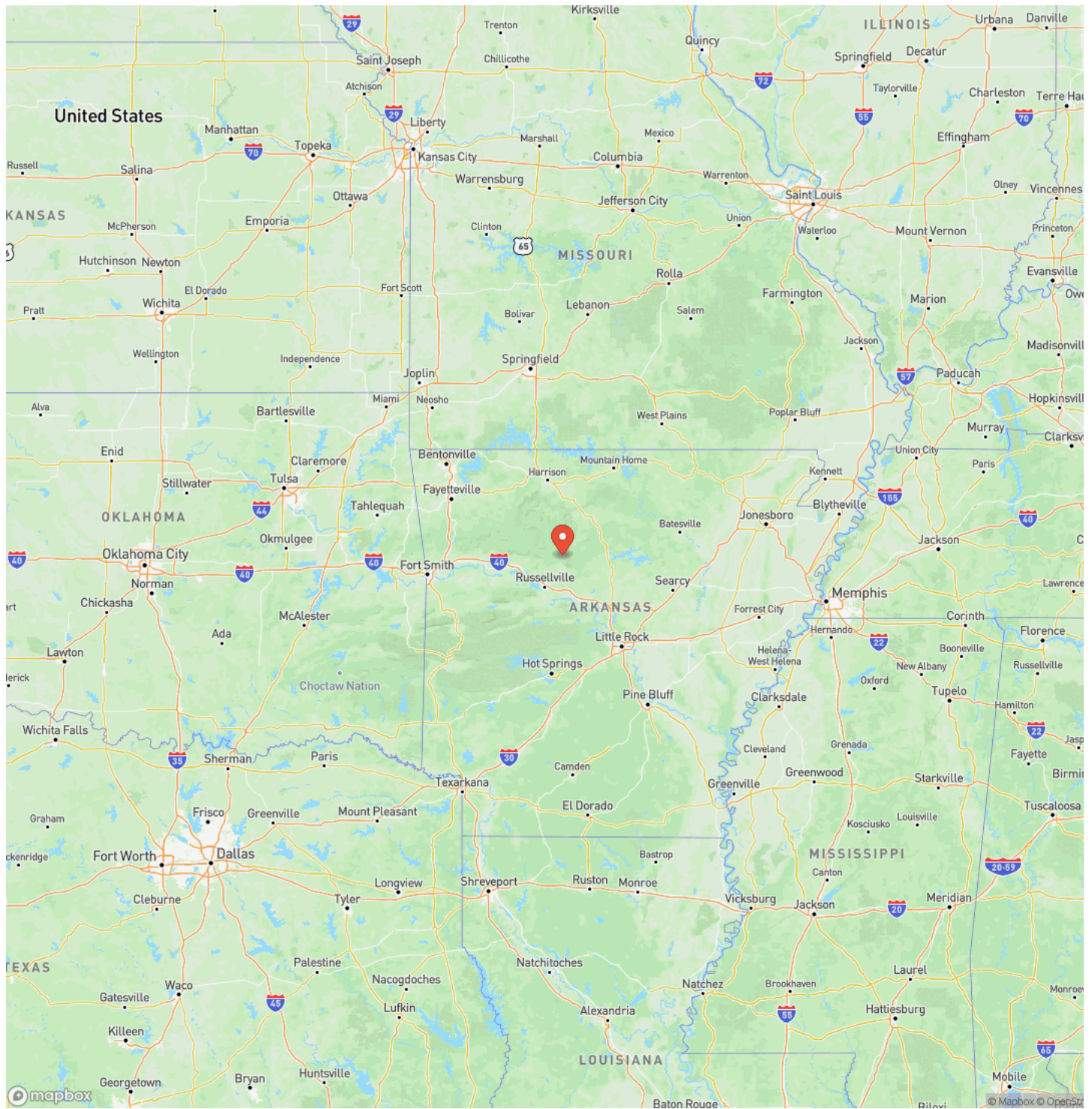
15 +/- Riverfront & National Forest Acreage | Paradise | Hector, AR | Pope County
Hector, AR / Pope County



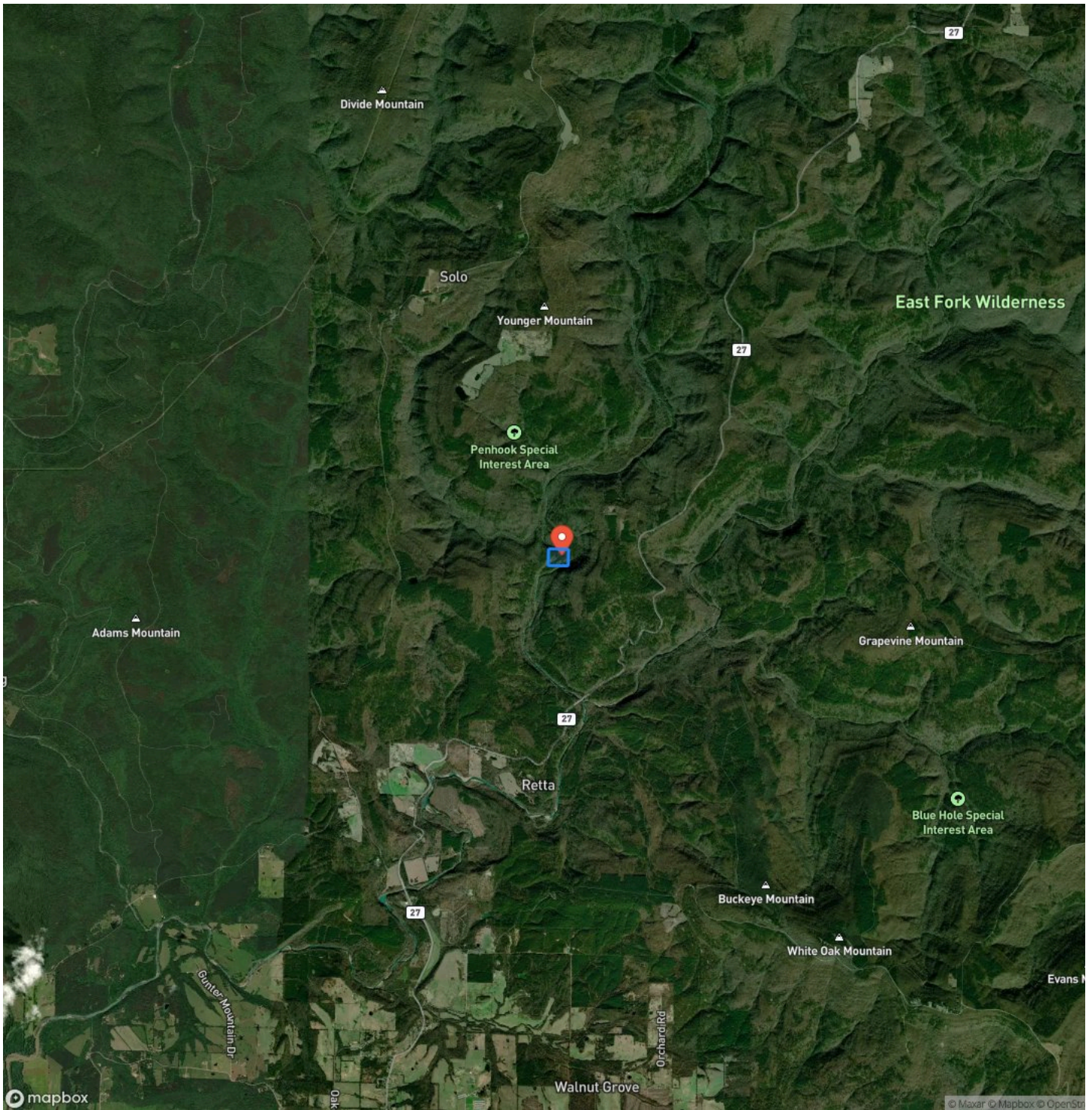
Locator Map



Locator Map



Satellite Map



DISCLAIMERS

Information in this brochure is provided solely for information purposes and does not constitute an offer to sell or advertise real estate outside the states in which broker or agent licensed. The information presented has been obtained from sources deemed to be reliable, but is not guaranteed or warranted by the agent, broker, or the sellers of these properties. This offering is subject to errors, omissions, prior sale, price change, correction or withdrawal from the market without notice. All references to age, square footage, income, expenses, acreage, carrying capacity, and land classification, etc. are approximate. Prospective buyers are chargeable with and expected to conduct their own independent investigation of the information and the property and to rely only on those results. Sellers reserve the right to accept or reject any and all offers without liability to any buyer or cooperating broker.

Maps are provided for illustration purposes only, the accuracy is not warranted. Parcels on interactive maps are not adjusted to match aerial backgrounds. This information is for reference purposes only and is not a legal document. Data maps contain errors. The seller and seller's agent are making known to all potential buyers that there may be variations between the location of the existing fence lines and the legal description of the deeded property. Seller and seller's agent make no warranties with regard to the location of the fence lines in relationship to the deeded property lines, nor does the Seller make any warranties or representations with regard to the specific acreage contained within the fenced property lines. Seller is selling the property in an "as is" condition, which includes the location of the fences as they exist. Boundaries shown on the accompanying maps are approximate, based on county parcel data. The maps are not to scale. The accuracy of the maps is not guaranteed. Prospective buyers are encouraged to verify fence lines, deeded property lines and acreages using a licensed surveyor at their own expense.

Mossy Oak Properties Selling Arkansas

8111 N St Louis St

Cave City, AR 72521

(870) 495-2123

<https://wesellarkansas.com/>

