

Narrow Bridge East
Narrow Bridge Road
Chester, SC 29706

\$400,934
60± Acres
Chester County



MORE INFO ONLINE:

<https://www.mossyoakproperties.com/office/mossy-oak-properties-milliken-advisors-realty-group/#rs-office-listings>

Narrow Bridge East
Chester, SC / Chester County

SUMMARY

Address

Narrow Bridge Road null

City, State Zip

Chester, SC 29706

County

Chester County

Type

Timberland, Hunting Land, Recreational Land

Latitude / Longitude

34.734374 / -81.371528

Acreage

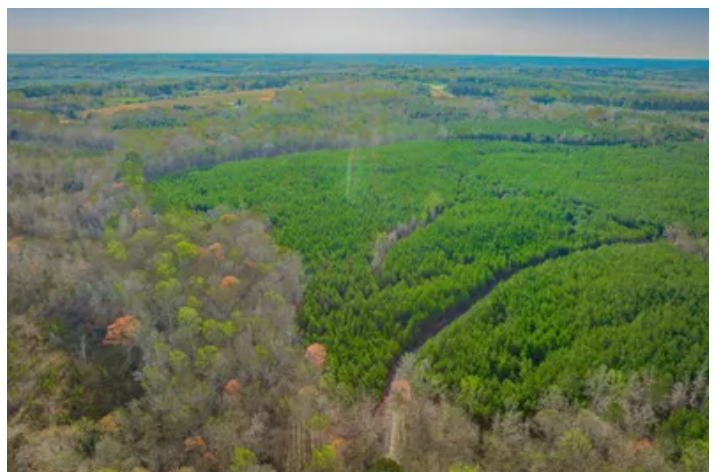
60

Price

\$400,934

Property Website

<https://www.mossoakproperties.com/property/narrow-bridge-east/chester/south-carolina/79705/>



MORE INFO ONLINE:

<https://www.mossoakproperties.com/office/mossy-oak-properties-milliken-advisors-realty-group/#rs-office-listings>

Narrow Bridge East Chester, SC / Chester County

PROPERTY DESCRIPTION

The Narrow Bridge East Tract is a pleasantly secluded 60-acre tree farm located in western Chester County. Offering an exceptional ratio of manageable acreage to total tract size, the property includes 46 acres of 8-year-old pine plantations complemented by 14 acres of beautiful natural hardwoods. The headwaters of Brushy Fork Creek form the northern boundary in a beautiful creek bottom, adding valuable wildlife diversity and providing a peaceful natural feature for the landowner to enjoy.

Topography ranges from nearly level to gently rolling, supporting a variety of potential uses including pasture, wildlife management, or continued timber production. With nearly 1,800 feet of frontage along Narrow Bridge Road, the property allows for multiple access points and ensures convenient entry for both management and recreational use.

Call Taylor Heithold at [\(704\) 458-1654](tel:7044581654) for more information or to schedule a tour.

MORE INFO ONLINE:

<https://www.mossyoakproperties.com/office/mossy-oak-properties-milliken-advisors-realty-group/#rs-office-listings>

**Narrow Bridge East
Chester, SC / Chester County**



MORE INFO ONLINE:

<https://www.mossyoakproperties.com/office/mossy-oak-properties-milliken-advisors-realty-group/#rs-office-listings>

Locator Map



MORE INFO ONLINE:

<https://www.mossyoakproperties.com/office/mossy-oak-properties-milliken-advisors-realty-group/#rs-office-listings>

Locator Map



MORE INFO ONLINE:

<https://www.mossyoakproperties.com/office/mossy-oak-properties-milliken-advisors-realty-group/#rs-office-listings>

Satellite Map



MORE INFO ONLINE:

<https://www.mossyoakproperties.com/office/mossy-oak-properties-milliken-advisors-realty-group/#rs-office-listings>

DISCLAIMERS

"Property inspections shall be done during daylight hours. Seller and Rural Land Investments in no way make any representations or warranties regarding the conditions of the property, including any and all access routes, and all persons entering upon the property do so at their own risk and accept said property "as-is" in its existing condition during such inspections. All persons entering upon the property assume all risks and liabilities and agree to indemnify, defend, and hold harmless Seller, its affiliates, officers, directors, managers, agents, representatives, and employees from and against any and all claims, demands, causes of action, injuries (including death) and damages resulting from any accident, incident, or occurrence arising out of, incidental to or in any way resulting from his or her inspection of the property or his or her exposure to the conditions of the property."

MORE INFO ONLINE:

<https://www.mossoakproperties.com/office/mossoak-properties-milliken-advisors-realty-group/#rs-office-listings>

Mossy Oak Properties Milliken Advisors Realty Group

245 Stoneridge Drive

Columbia, SC 29210

(803) 722-1124

<https://www.mossoakproperties.com/office/mossy-oak-properties-milliken-advisors-realty-group/#rs-office-listings>

MORE INFO ONLINE:

<https://www.mossoakproperties.com/office/mossy-oak-properties-milliken-advisors-realty-group/#rs-office-listings>