



HALL AND HALL®

Dedicated to Land and Landowners Since 1946

SALES | AUCTIONS | FINANCE | MANAGEMENT | APPRAISALS

Axes Canyon Ranch | Dillon, Montana | \$12,900,000



Executive Summary

Axes Canyon Ranch's 7,055± deeded acres and 398± state lease acres lie along the foothills of the Ruby Mountains, just five miles from Dillon, Montana. Bordering public lands and offering a diverse landscape that transitions from foothill grasslands to timbered uplands, the ranch offers an excellent blend of wildlife habitat and four-season livestock grazing. The location overlooking irrigated hay fields along the Blacktail Deer Creek drainage makes the ranch ideal for elk hunting during the fall archery and rifle seasons. A well-developed stock water system and improved pastures enhance grazing capacity. Situated in an area characterized by large, tightly held operating ranches, the ranch has broad appeal for land investment, ranching, hunting, and residential development in one of southwest Montana's finest areas for outdoor recreation.





HALL AND HALL®

Dedicated to Land and Landowners Since 1946

SALES | AUCTIONS | FINANCE | MANAGEMENT | APPRAISALS

Just The Facts

- Located about five miles from the town of Dillon, a thriving hub of ranching and outdoor recreation in southwest Montana
- Encompasses 7,055± deeded acres and 398± leased acres
- Features a mix of grasslands, foothills, timbered uplands, and canyons
- Currently utilized for summer grazing approximately 2,000 AUMs with improved pastures and an extensive stock water distribution system
- Provides exceptional elk hunting throughout the fall seasons
- Numerous building sites offering sweeping views of the Beaverhead Valley and the surrounding mountain ranges
- Located minutes from world-class fly-fishing rivers, including the Beaverhead, Big Hole, Ruby, and Jefferson



B ELFLAND | belfland@hallandhall.com

1227 NORTH 14TH AVENUE, STE. 1 | BOZEMAN, MT 59715

(O) 406-587-3090 | (M) 406-539-1775

Information provided by Hall and Hall concerning real estate listed for sale is believed to be reliable but is not guaranteed and should be independently verified by potential purchasers. Information is subject to change, withdrawal, or correction. Hall and Hall makes no representations or warranties about the property or the accuracy or completeness of the information concerning the property including, without limitation: that the actual square footage, measurements, acreage, zoning, tax information, school district and other factors that may affect the value or use of the property may vary from that listed or shown in maps or public records and may change; the property's condition, income potential, or compliance with applicable laws or regulations; that estimates of potential rents, income, expenses, and capitalization rates may not be achieved; that some photographs of the property may be digitally enhanced; the legality or enforceability of any covenants, conditions or restrictions that may affect the use any enjoyment of the property; and any changes in market conditions or the future investment value of real estate listed for sale. Hall and Hall is not liable for any inaccuracies, errors, or omissions concerning information about the property or losses that result from the use of this information. Information provided by Hall and Hall concerning the property is not a substitute for inspections, surveys, title searches or other due diligence by potential purchasers. Potential purchasers should perform their own due diligence including legal and financial review before purchasing.

Axes Canyon Ranch
DILLON, MONTANA

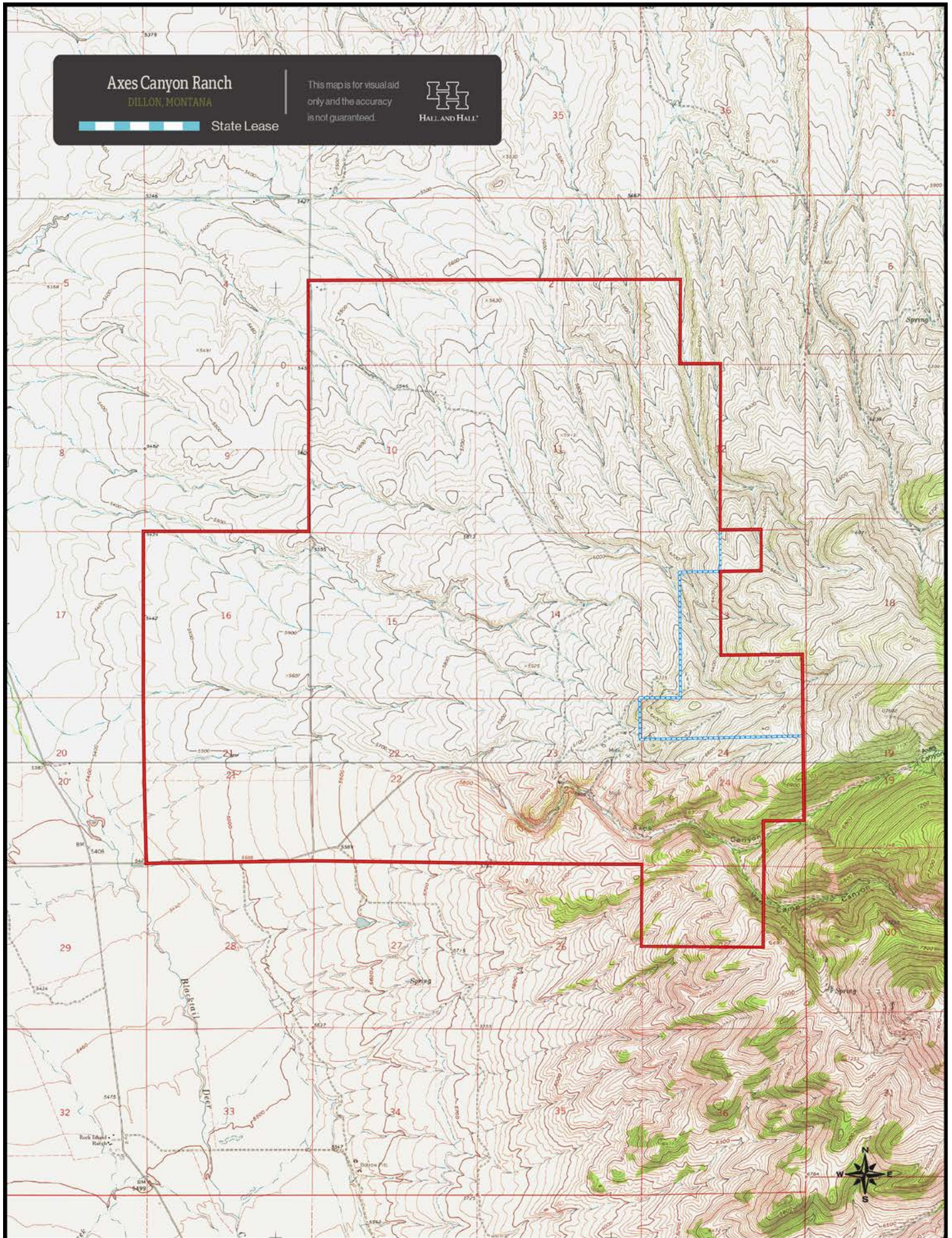


State Lease

This map is for visual aid
only and the accuracy
is not guaranteed.

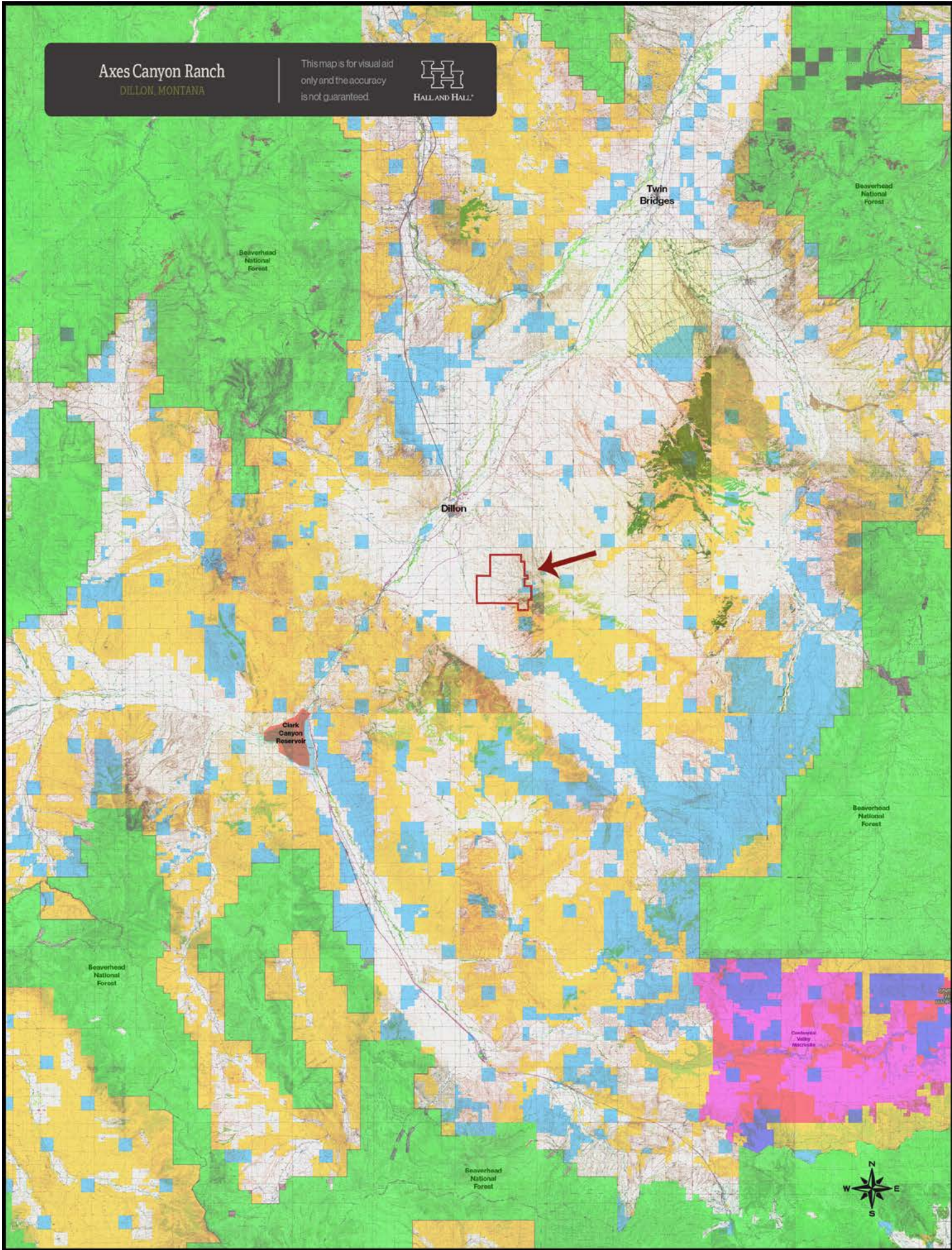


HALL AND HALL



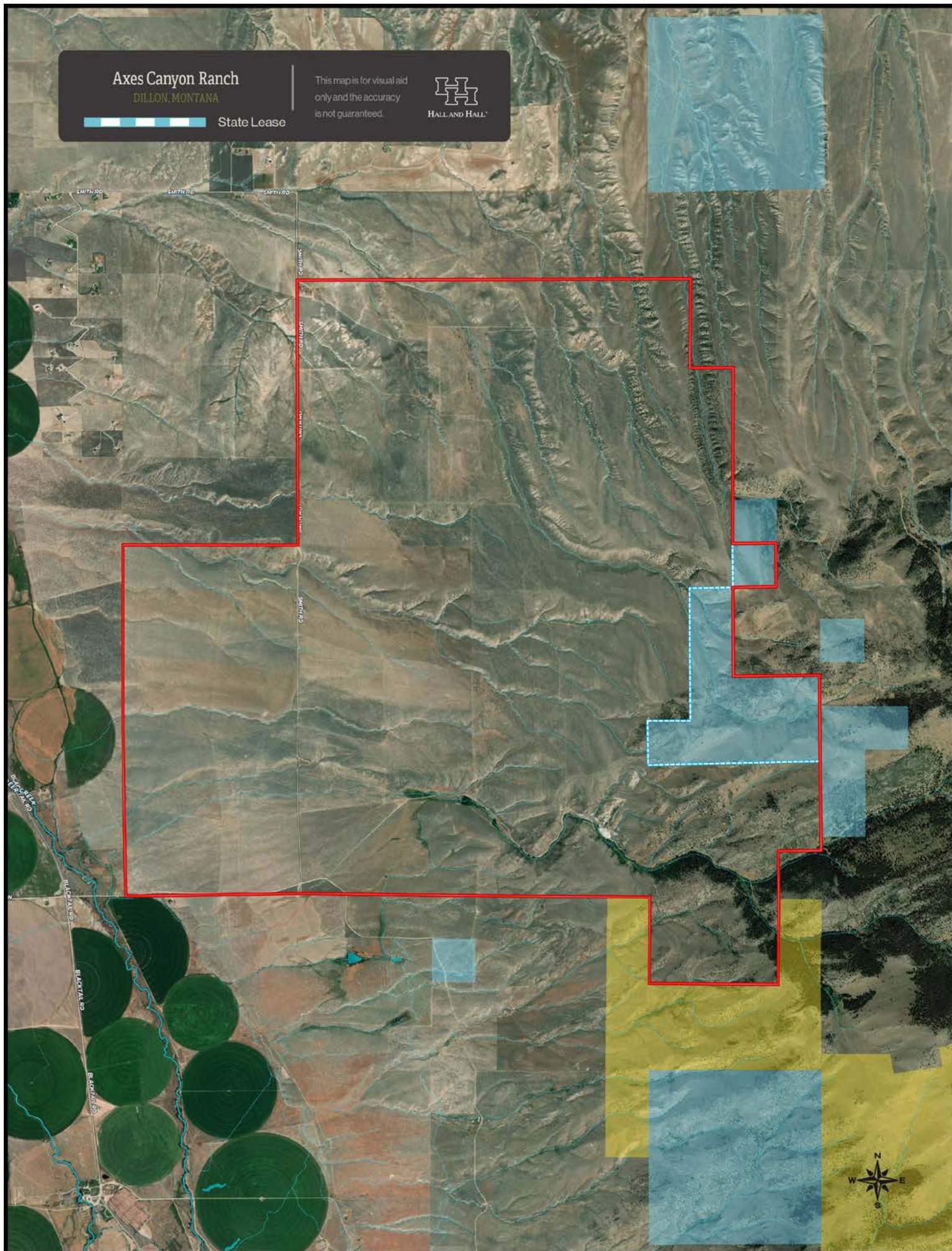
Axes Canyon Ranch
DILLON, MONTANA

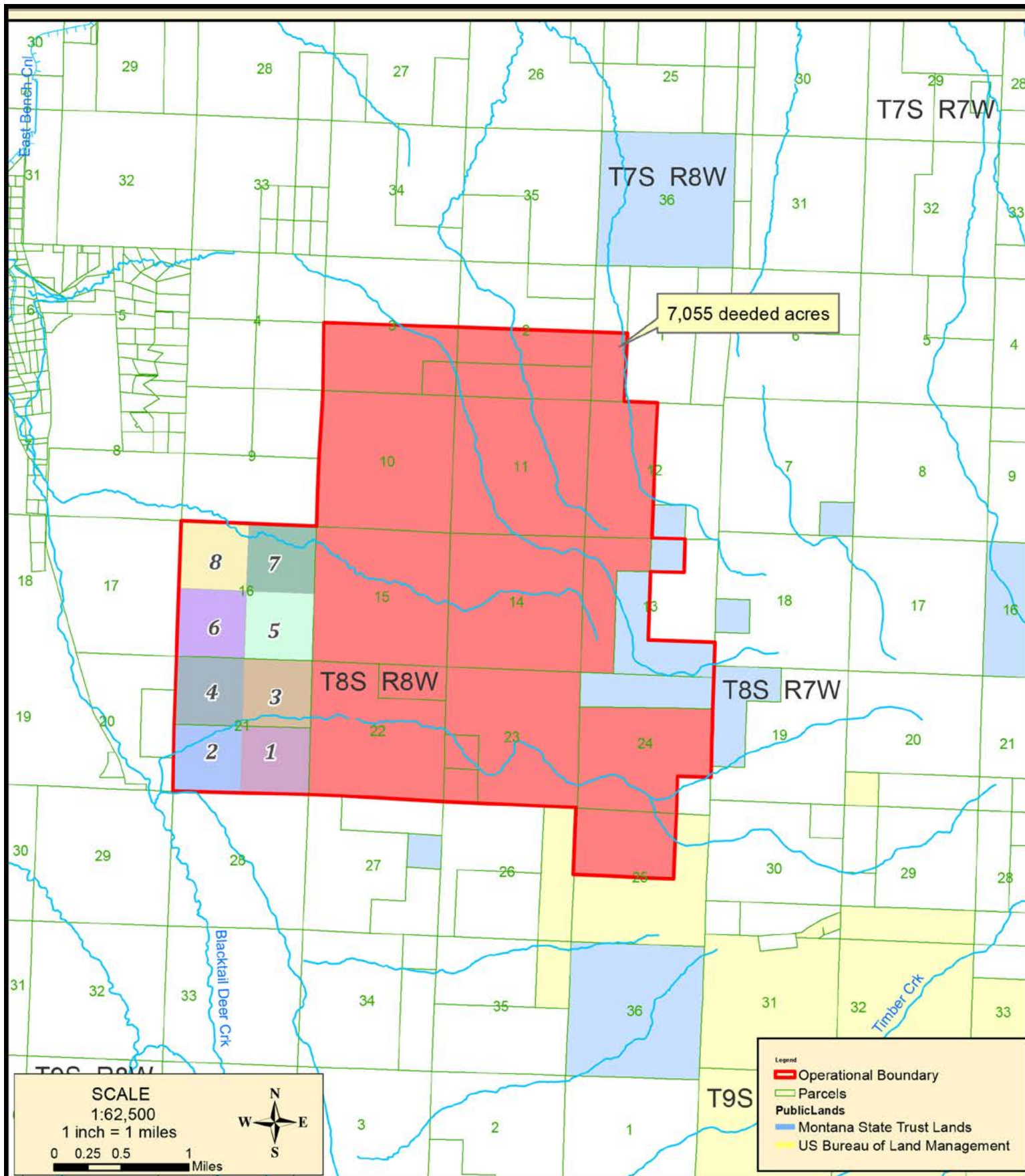
This map is for visual aid
only and the accuracy
is not guaranteed.



Axes Canyon Ranch
DILLON, MONTANA

State Lease

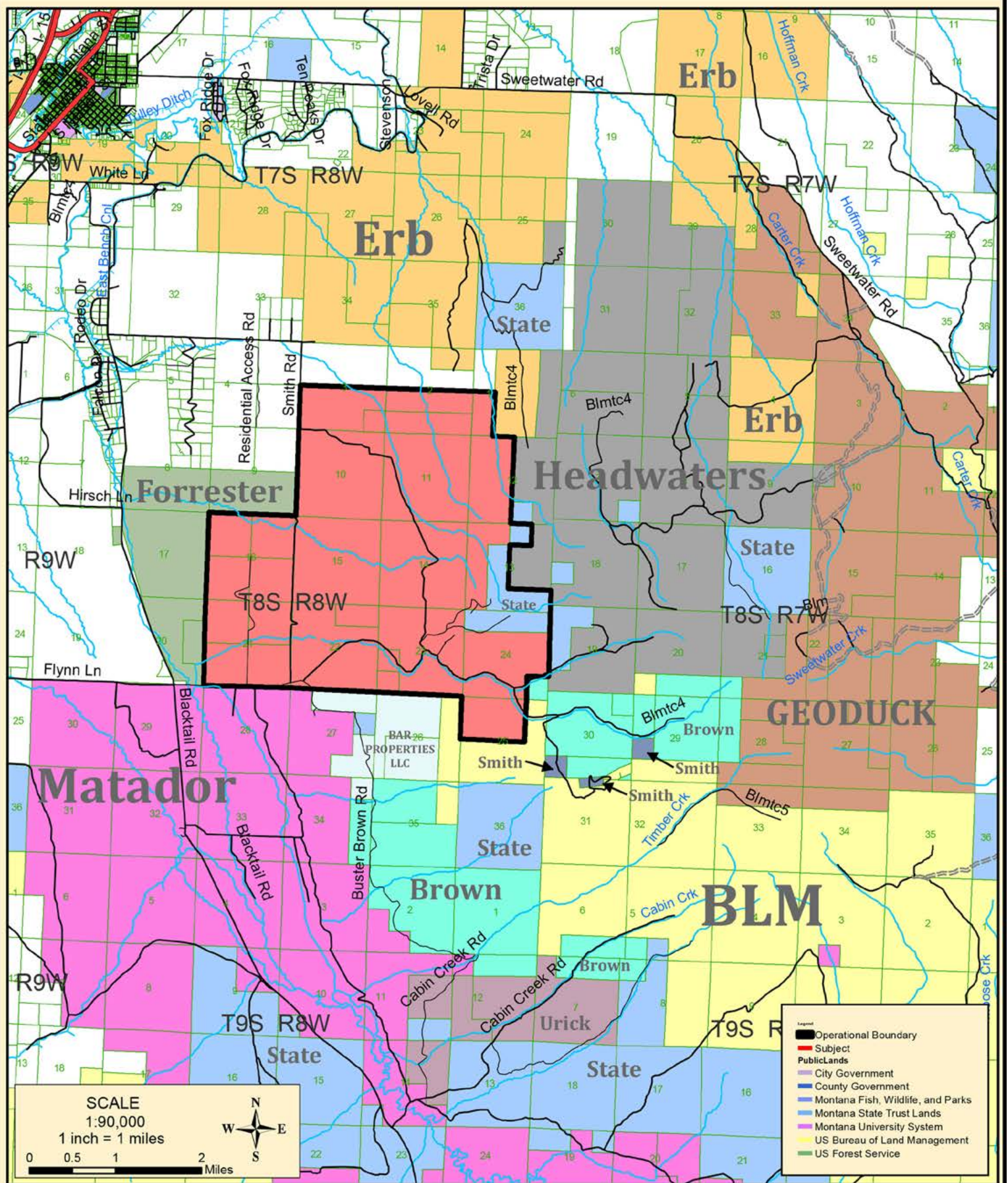




Axes Canyon Ranch Beaverhead County, Montana

MAP IS INTENDED TO SERVE AS A VISUAL GUIDE
AND ITS ACCURACY IS NOT WARRANTED

Mapping Services
Part & Parcel LLC
Belgrade, MT



Axes Canyon Ranch Beaverhead County, Montana

MAP IS INTENDED TO SERVE AS A VISUAL GUIDE
AND ITS ACCURACY IS NOT WARRANTED

Mapping Services By
Part & Parcel LLC
Belgrade, MT