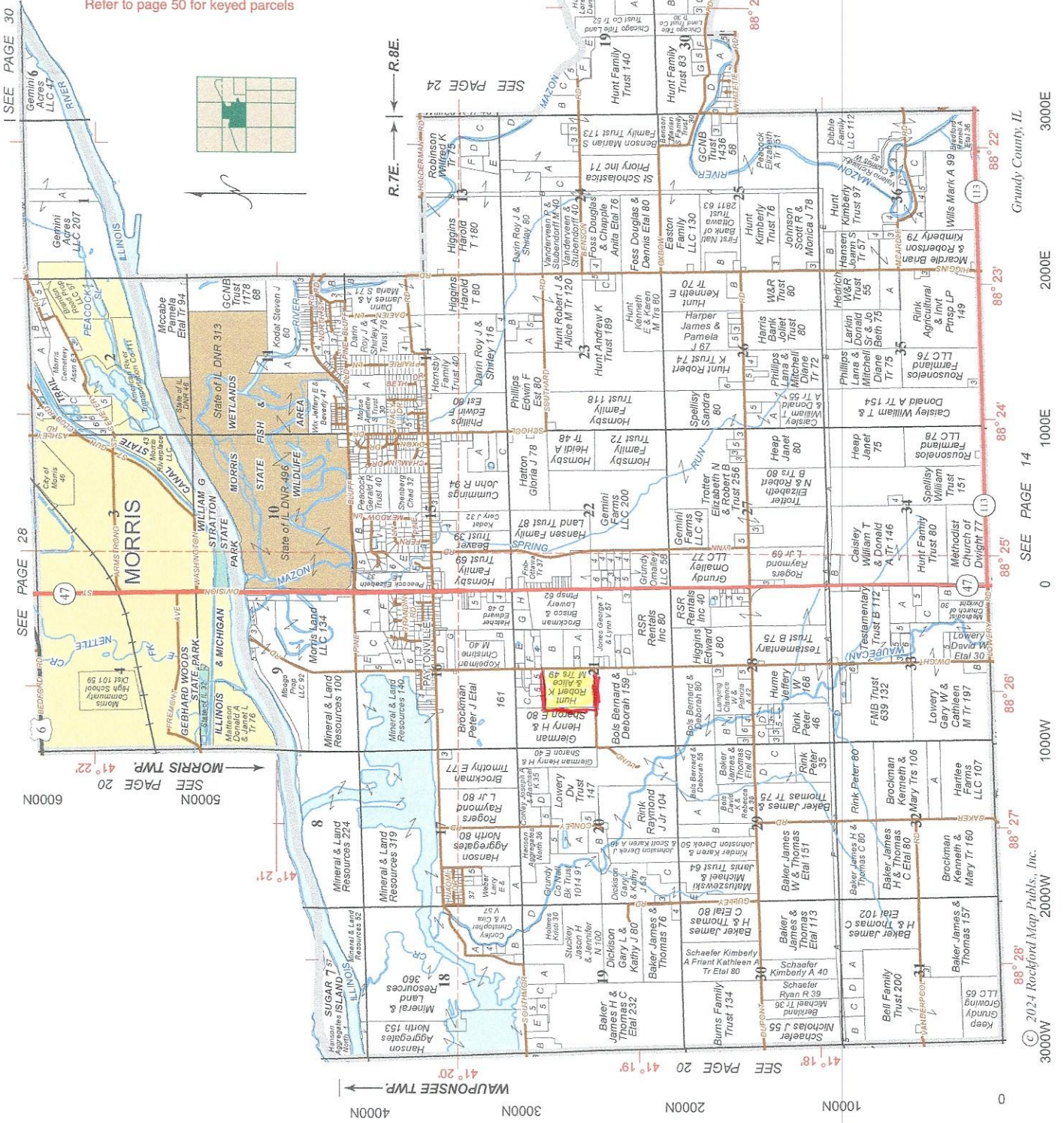


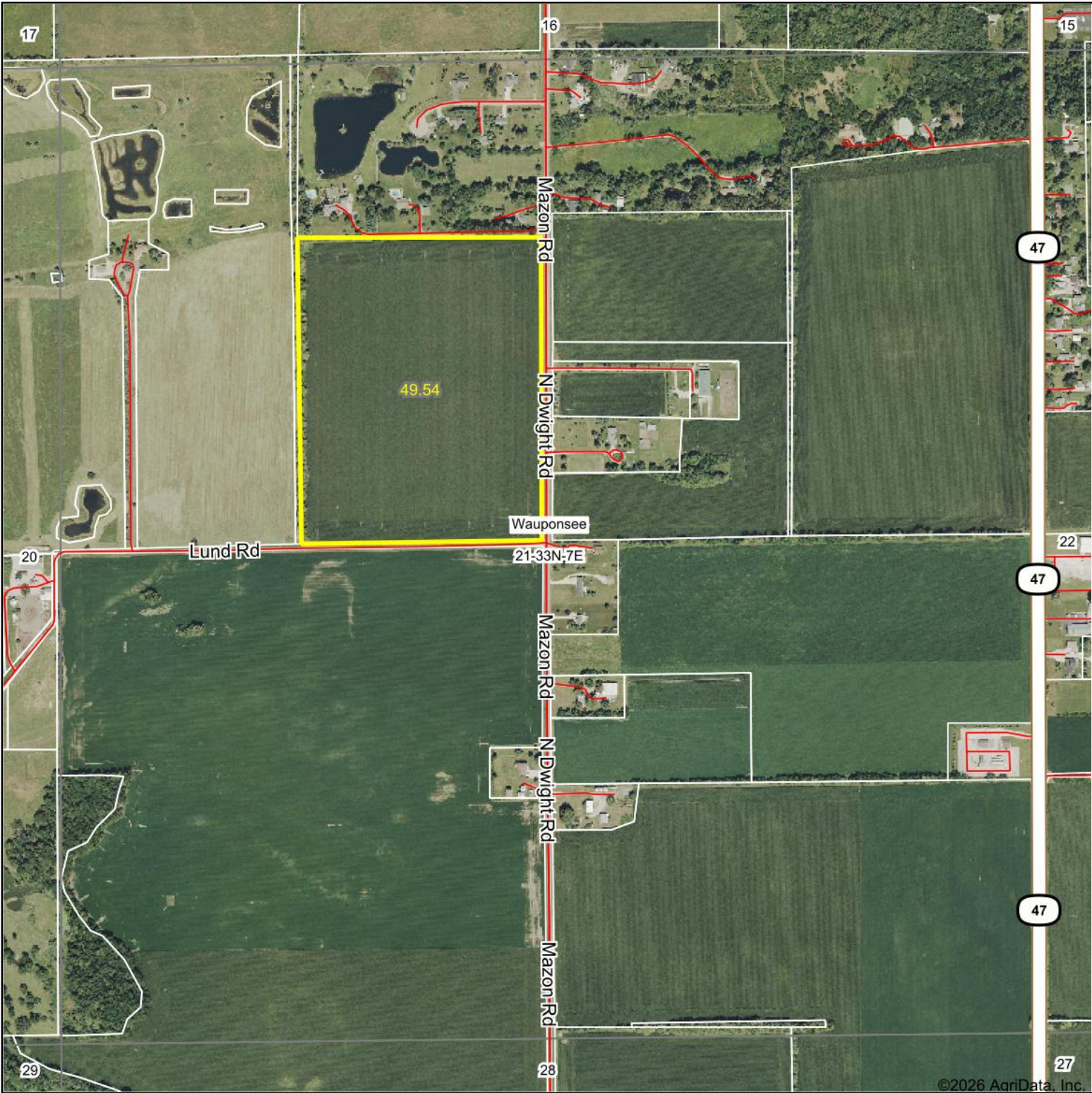
# WAUPONSEE- MORRIS

## T.33N.-R.7-8E.

Refer to page 50 for keyed parcels



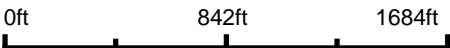
# Aerial Map



©2026 AgriData, Inc.



Boundary Center: 41° 19' 23.52, -88° 25' 59.84



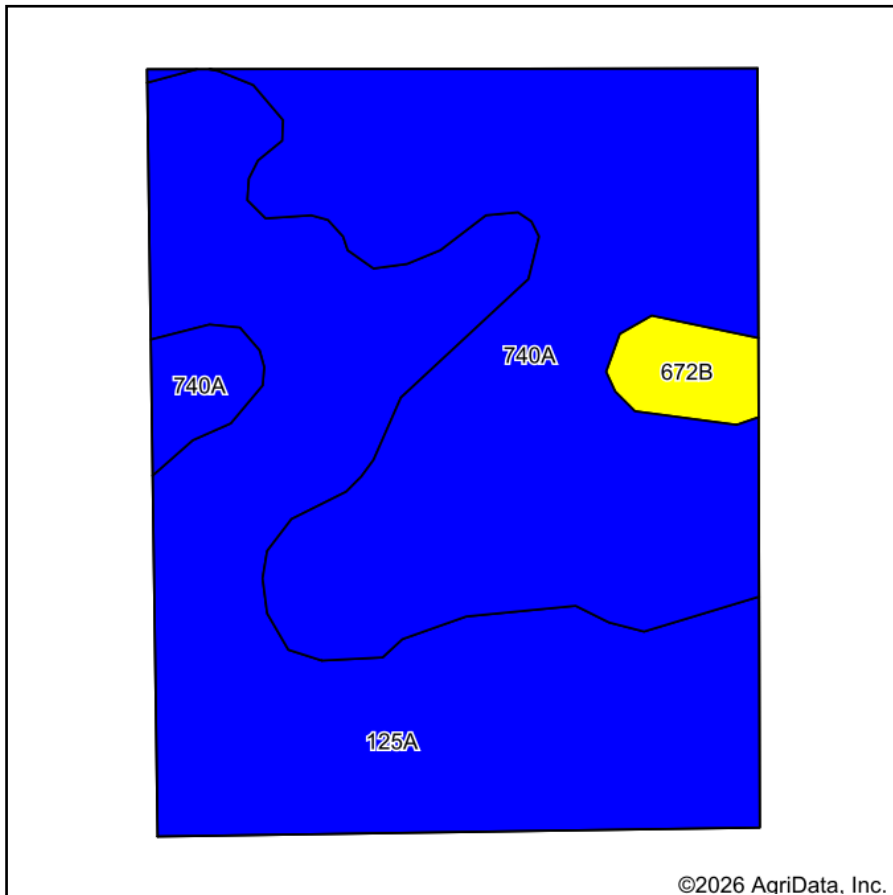
**21-33N-7E**  
**Grundy County**  
**Illinois**



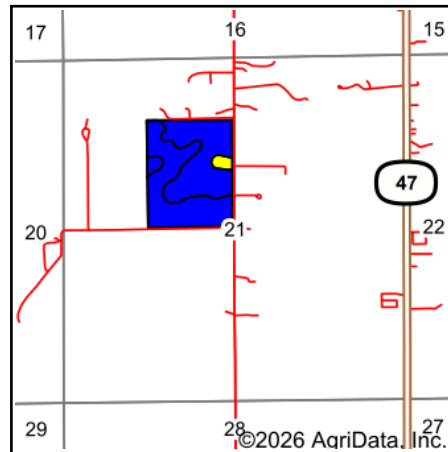
4/7/2026

Field borders provided by Farm Service Agency as of 5/21/2008.

# Soils Map



Soils data provided by USDA and NRCS.



State: **Illinois**  
 County: **Grundy**  
 Location: **21-33N-7E**  
 Township: **Wauponsee**  
 Acres: **49.54**  
 Date: **4/7/2026**



Area Symbol: IL063, Soil Area Version: 20

Code	Soil Description	Acres	Percent of field	Il. State Productivity Index Legend	Water Table	Restrictive Layer	Soil Drainage	Subsoil rooting <sup>a</sup>	Corn Bu/A	Soybeans Bu/A	Crop productivity index for optimum management	*n NCCPI Overall	*n NCCPI Corn	*n NCCPI Soybeans
740A	Darroch silt loam, 0 to 2 percent slopes	24.23	48.9%		1.5ft.	> 6.5ft.	Somewhat poorly drained	FAV	177	57	129	76	73	76
**125A	Selma loam, 0 to 2 percent slopes	23.91	48.3%		0.5ft.	> 6.5ft.	Poorly drained	FAV	**178	**58	**130	77	75	77
**672B	Crescent loam, 2 to 5 percent slopes	1.40	2.8%		> 6.5ft.	> 6.5ft.	Well drained	FAV	**158	**51	**117	84	84	73
<b>Weighted Average</b>									<b>176.9</b>	<b>57.3</b>	<b>129.1</b>	<b>*n 76.7</b>	<b>*n 74.3</b>	<b>*n 76.4</b>

**Table: Optimum Crop Productivity Ratings for Illinois Soil EFOTG are sourced from Bulletin 811 calculated Map Unit Base Yield Indices, and adjusted (Adj) for slope, erosion, flooding, and surface texture.** Publication Date: 02-08-2023

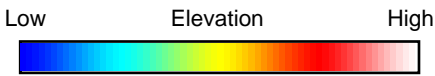
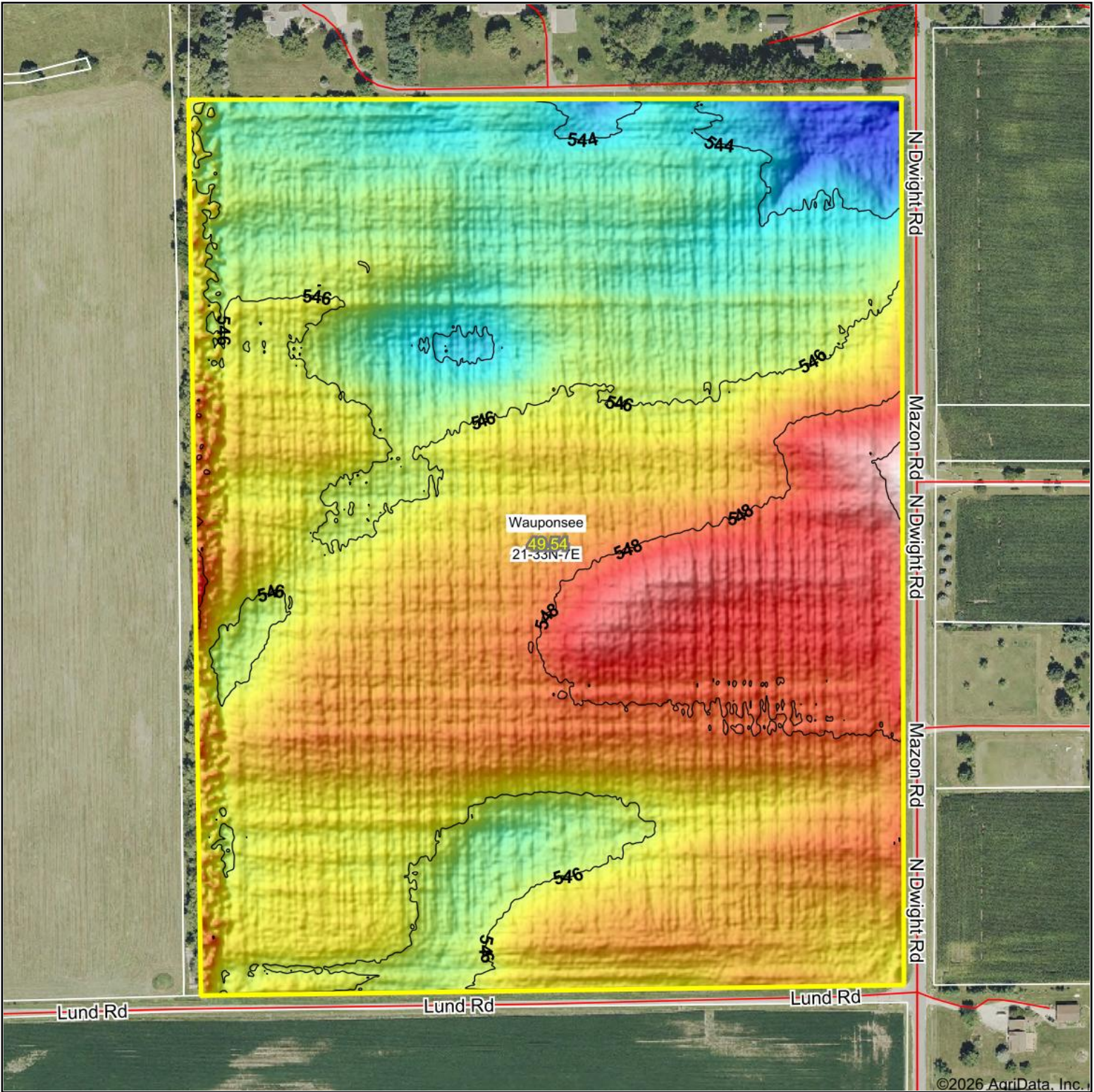
Crop yields and productivity (B811 EFOTG) are maintained at the following USDA web site: 2023 Illinois Soil Productivity and Yield Indices:

<https://efotg.sc.egov.usda.gov/#/state/IL/documents/section=2&folder=52809>

\*\* Base indexes from Bulletin 811 adjusted for slope, erosion, flooding, and surface texture according to the Il. Soils EFOTG

\*n: The aggregation method is "Weighted Average using all components"

# Topography Hillshade



Maps Provided By:



© AgriData, Inc. 2025 www.AgriDataInc.com

Field borders provided by Farm Service Agency as of 5/21/2008.

Source: USGS 1 meter dem

Interval(ft): 2

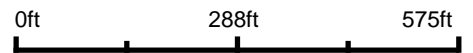
Min: 541.9

Max: 550.7

Range: 8.8

Average: 546.4

Standard Deviation: 1.38 ft



4/7/2026

**21-33N-7E**  
**Grundy County**  
**Illinois**

Boundary Center: 41° 19' 23.52, -88° 25' 59.84