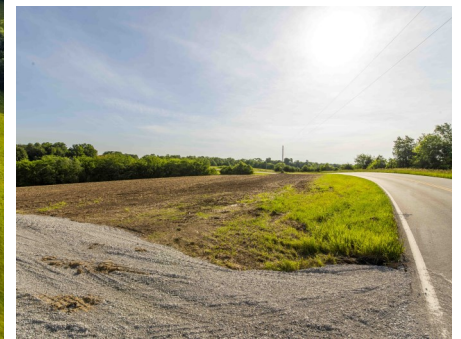




**T R O P H Y**  
PROPERTIES AND AUCTION  
LAND | RECREATIONAL | RESIDENTIAL

# 5.5 Surveyed Acres for Sale - Lincoln County Missouri

www.TrophyPA.com • (855) 573-5263 • leads@trophy.com



#### PROPERTY ADDRESS:

Tract #6 - 00 Hwy F  
Elsberry, MO 63343

**PRICE:** \$105,875

**ACRES:** 5.5

**COUNTY:** Lincoln

#### PROPERTY HIGHLIGHTS:

- 5.5 Surveyed Acres
- Located amongst the LEGENDARY Hills & Knobs
- Excellent Build Site, electric along highway
- Blacktop frontage on Hwy F
- 3± acres of open ground currently in row crop
- Hidden field would make a perfect food plot
- New entrance into property
- Only 5 miles from Hwy61 - all blacktop
- Some Deed Restrictions, see in full listing description

#### PROPERTY DESCRIPTION:

Outstanding property located in the legendary hills of Northern Lincoln County! Offering impressive views of the distant knobs and ridge tops, this homesite tract is packed full of great features. This property offers an excellent BUILD SITE, electric at the highway, blacktop frontage on Hwy F, 3± acres of open ground currently in row-crop and a new entrance. Don't miss this opportunity to own private land located in one of the most sought after regions north of St. Louis. Only 35 miles north of Wentzville. Some Deed restrictions: No single or doublewide mobile or modular homes, No junk yards, No animal feeding operations, No hog confinements, No commercial dog kennels, No ATV, side by side or dirt bike tracks open to public, No subdivision of this tract.



#### PRESENTED BY:

**JOE OGDEN**

**Land Specialist**

M: (636) 358-3567

P: (855) 573-5263 x707

E: jogden@trophy.com

**Trophy Properties and Auction**

640 Cepi Drive

Suite 100

Chesterfield, MO 63005

www.Trophy.com

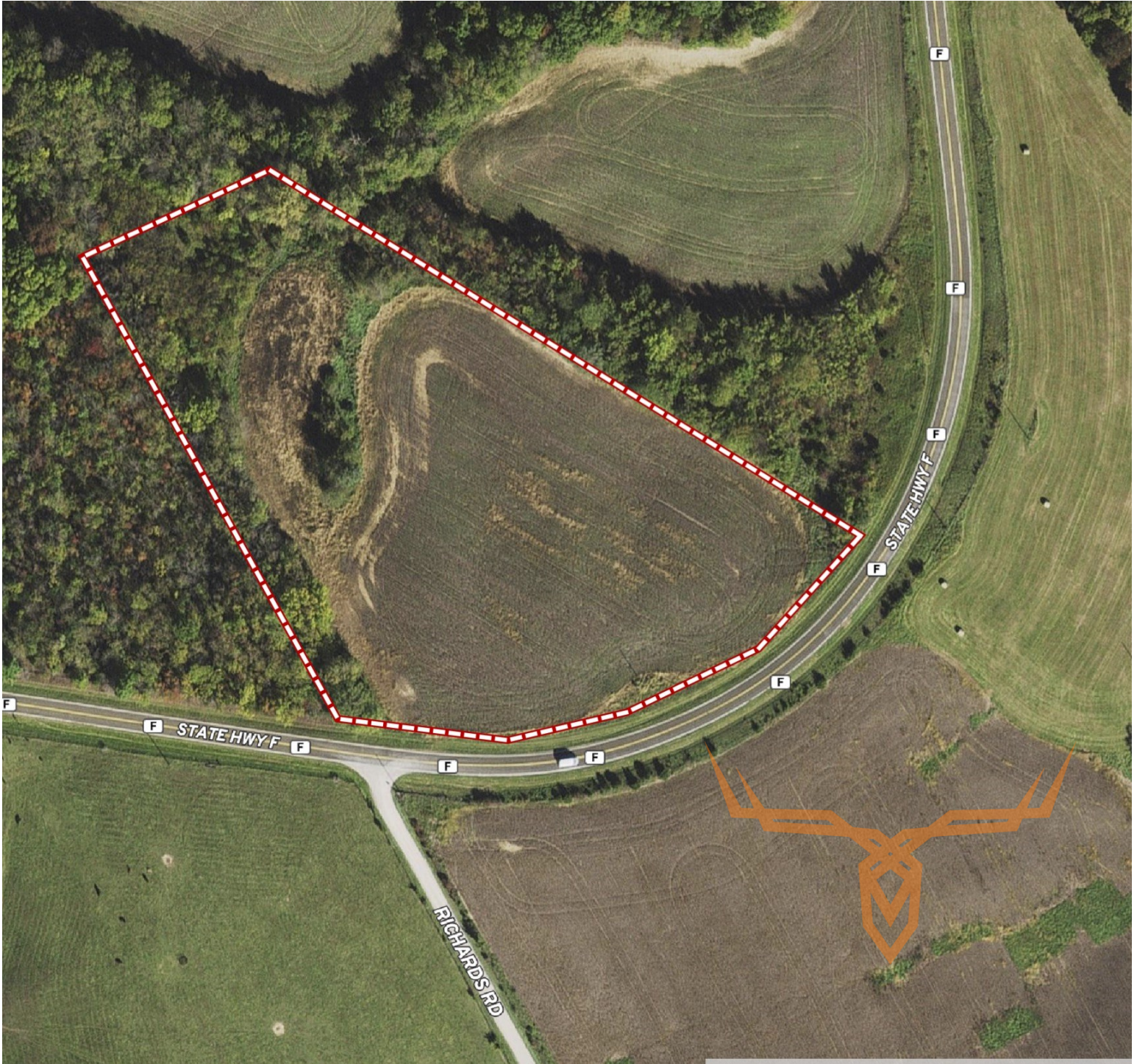
leads@trophy.com



**T R O P H Y**  
PROPERTIES AND AUCTION  
LAND | RECREATIONAL | RESIDENTIAL

# 5.5 Surveyed Acres for Sale - Lincoln County Missouri

[www.TrophyPA.com](http://www.TrophyPA.com) • (855) 573-5263 • [leads@trophy.com](mailto:leads@trophy.com)



Broker does not guarantee the accuracy of sq. ft., lot size, or other information, buyer is advised to independently verify the accuracy of information through personal inspection and with appropriate professionals