

76± Acres in Leflore County Browning Rd Greenwood, MS 38930 | \$199,500



The 76± acre property in Leflore County, MS, consists of 65± plus acres of mixed hardwood timber, which would be an excellent long-term investment. There are 5-6± acres of open field that would be a great dual field for deer hunting and a dove food plot. The property has two water sources: a small pond and a beautiful duck hunting brake with Tupelo gum and cypress trees. To the east of the timber, there is a perfect spot for a timber hole where a floodgate could be installed to control your water year-round. Property taxes are only \$29 for this multipurpose property that offers deer, duck, and dove hunting. If you're looking for a smaller tract to call your own, here it is! Call Anthony to schedule your tour today!



**ANTHONY
STEEN**

REALTOR®

Office: 601.898.2772

Cell: 662.645.5151

Anthony@TomSmithLand.com



Expect More. Get More.

A Real Estate Expert You Can Trust

TomSmithLandandHomes.com

Information is believed to be accurate but not guaranteed.





A Real Estate Expert *You Can Trust!*

ANTHONY STEEN
REALTOR®

O: 601.898.2772 C: 662.645.5151

Anthony@TomSmithLand.com

TomSmithLandandHomes.com



Expect More. Get More.





A Real Estate Expert *You Can Trust!*

ANTHONY STEEN
REALTOR®
O: 601.898.2772 C: 662.645.5151
Anthony@TomSmithLand.com
TomSmithLandandHomes.com



Expect More. Get More.





A Real Estate Expert *You Can Trust!*

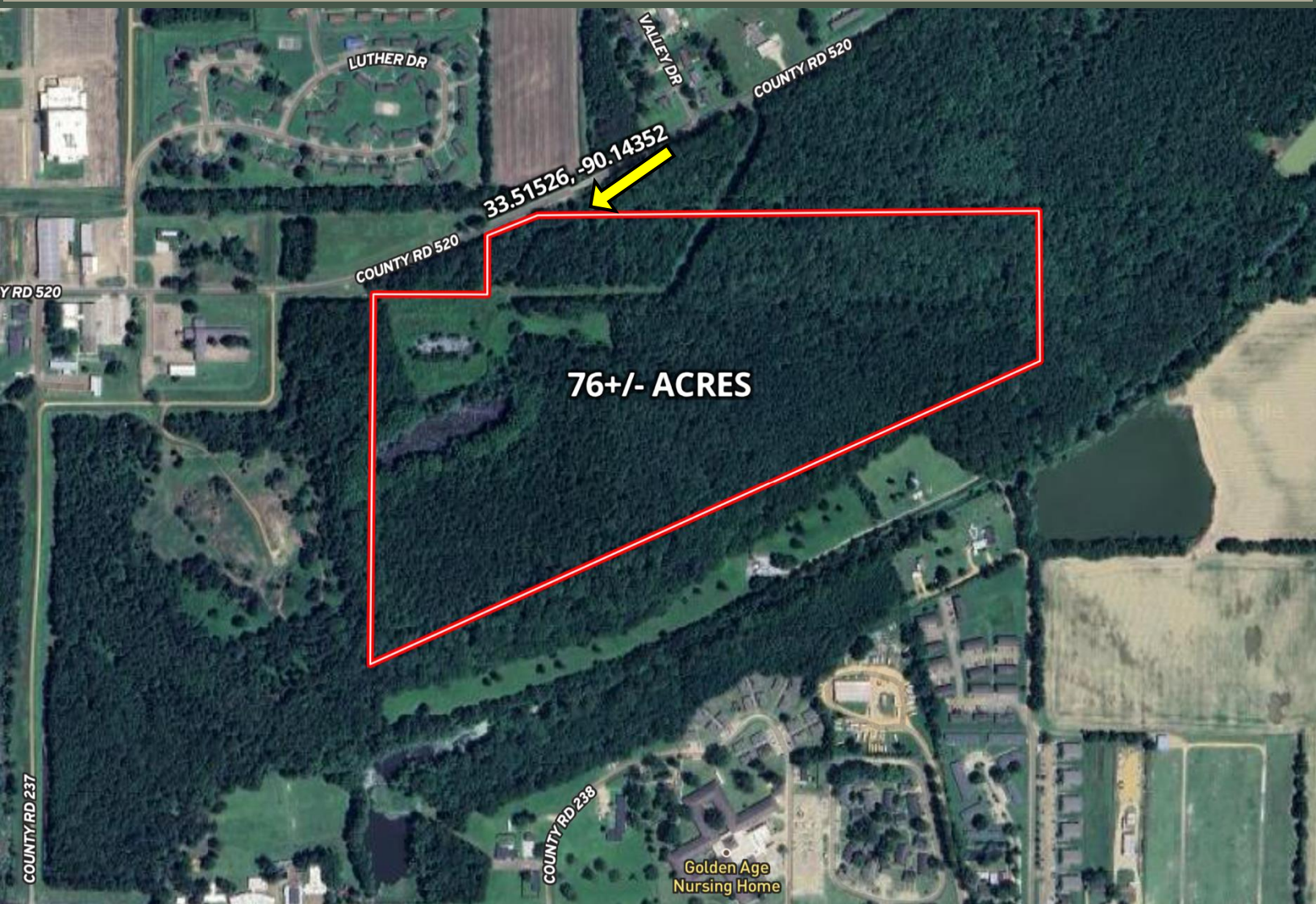
ANTHONY STEEN
REALTOR®
O: 601.898.2772 C: 662.645.5151
Anthony@TomSmithLand.com
TomSmithLandandHomes.com



Expect More. Get More.



AERIAL MAP



[Click for Interactive Map](#)

A Real Estate Expert
You Can Trust!

ANTHONY STEEN
REALTOR®
O: 601.898.2772 C: 662.645.5151
Anthony@TomSmithLand.com
TomSmithLandandHomes.com

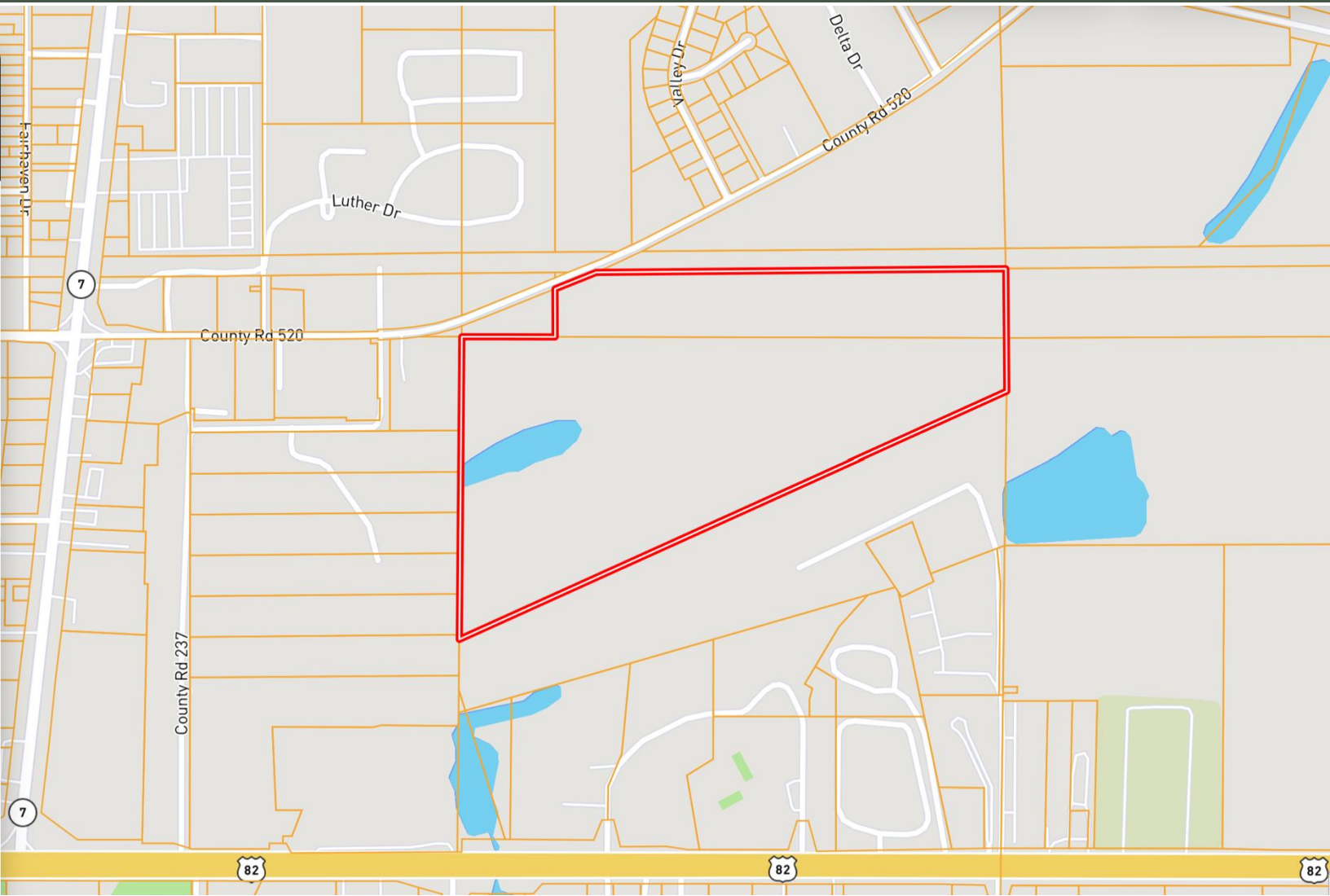


Expect More. Get More.

Information is believed to be accurate but not guaranteed.



OWNERSHIP MAP



A Real Estate Expert
You Can Trust!

ANTHONY STEEN
REALTOR®
O: 601.898.2772 C: 662.645.5151
Anthony@TomSmithLand.com
TomSmithLandandHomes.com

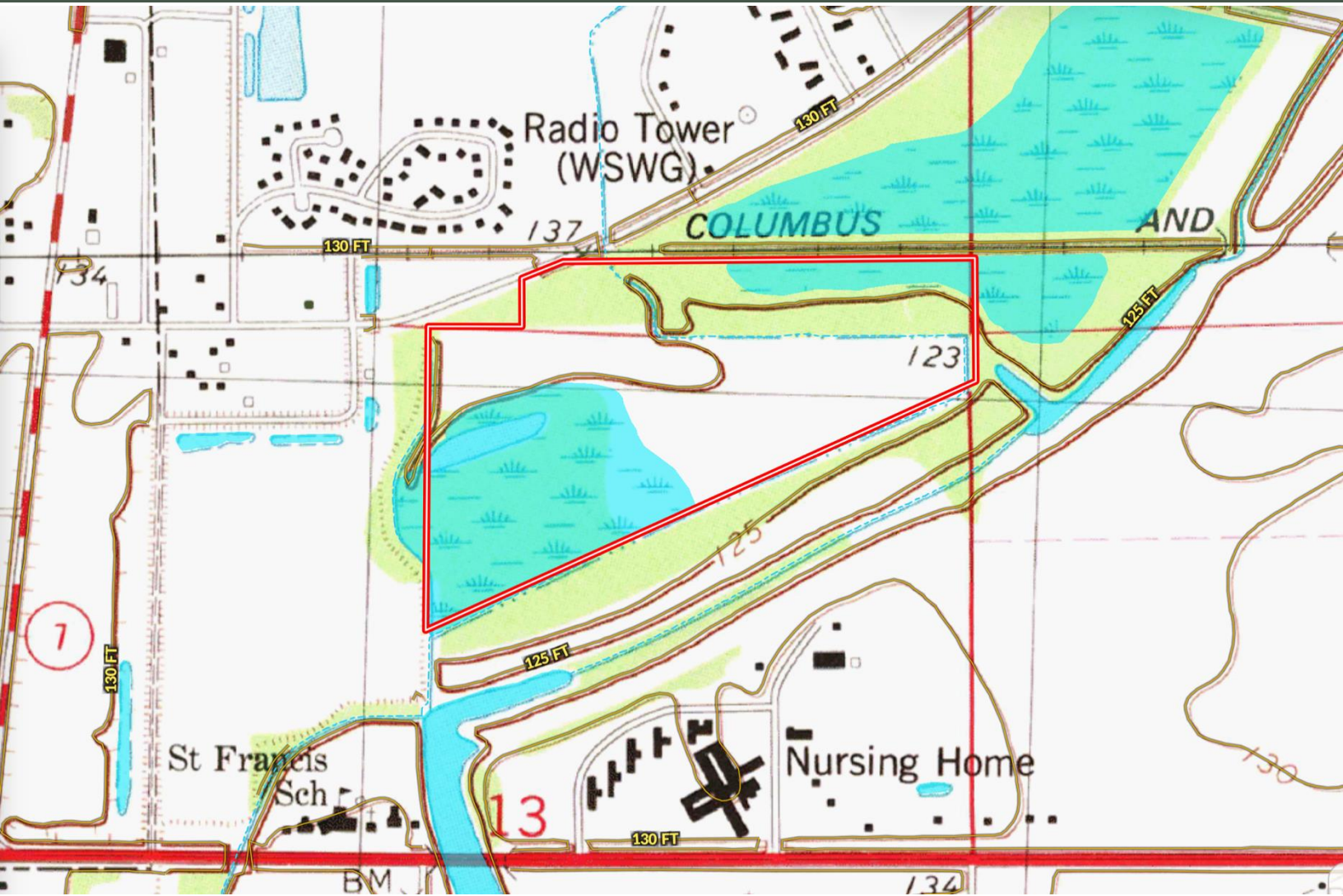


Expect More. Get More.

Information is believed to be accurate but not guaranteed.



TOPOGRAPHY MAP



A Real Estate Expert
You Can Trust!

ANTHONY STEEN
REALTOR®

O: 601.898.2772 C: 662.645.5151

Anthony@TomSmithLand.com

TomSmithLandandHomes.com



Expect More. Get More.

Information is believed to be accurate but not guaranteed.



SOIL MAP



SOIL CODE	SOIL DESCRIPTION	ACRES	%	CPI	NCCPI	CAP
23	Dowling muck	37.17	52.89	0	7	7w
6	Alligator clay, depressional	30.9	43.97	0	22	5w
W	Water	1.77	2.52	0	-	-
27	Tensas silty clay loam, 0 to 1 percent slopes	0.44	0.63	0	75	3w

A Real Estate Expert
You Can Trust!

ANTHONY STEEN

REALTOR®

O: 601.898.2772 C: 662.645.5151

Anthony@TomSmithLand.com

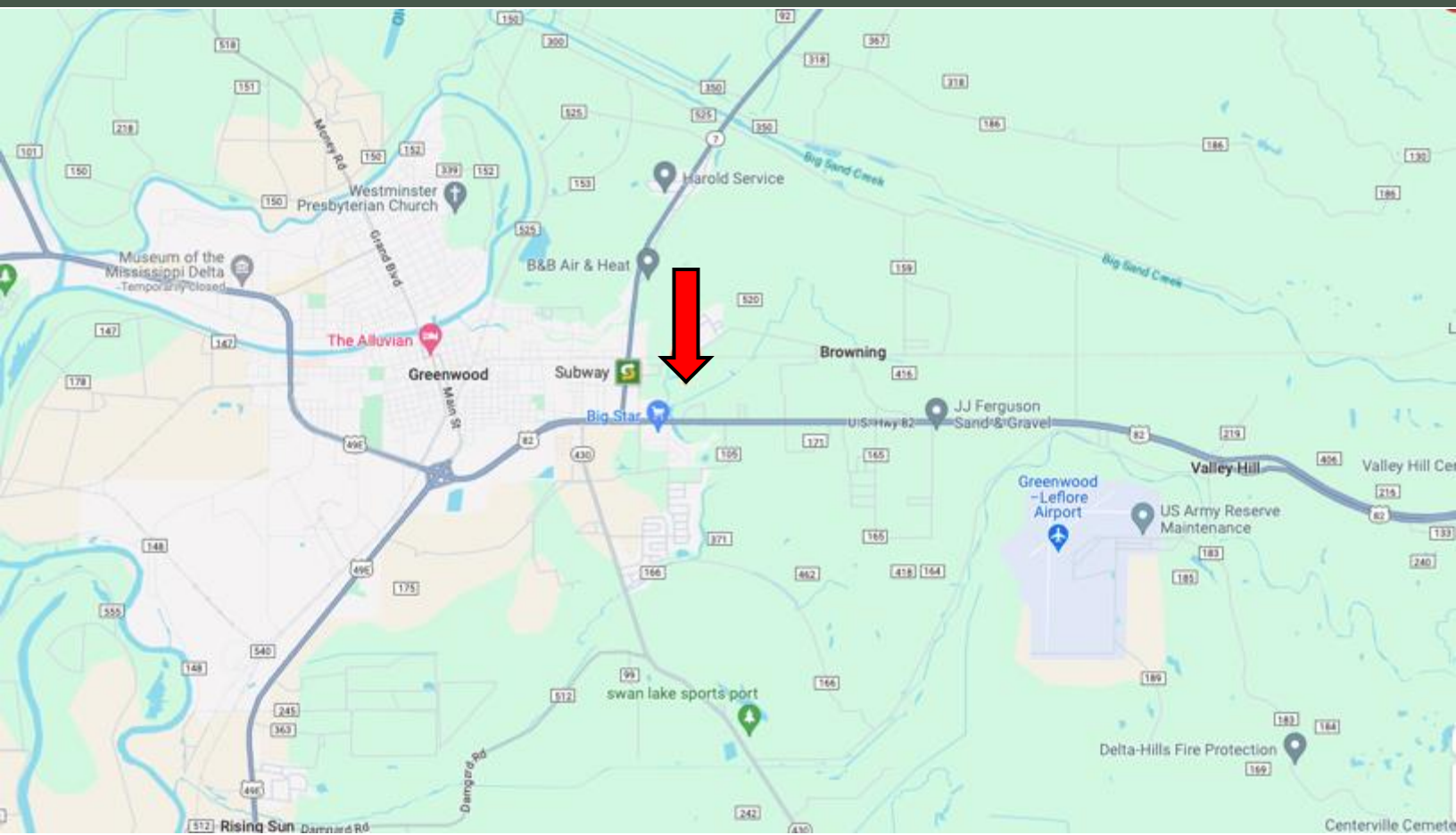
TomSmithLandandHomes.com



Expect More. Get More.



DIRECTIONAL MAP



Address: Browning Rd Greenwood, MS 38930

Directions from US-82 & MS-430 in Greenwood, MS: Travel east on US-82 E for 0.3 miles. Turn left onto MS-7 N and travel 0.5 miles. Turn right onto Browning Rd Ext. After 0.4 miles, the property will be on the right.

[Google Map link](#)



**ANTHONY
STEEN**

REALTOR®

Office: 601.898.2772

Cell: 662.645.5151

Anthony@TomSmithLand.com



Expect More. Get More.

A Real Estate Expert You Can Trust

TomSmithLandandHomes.com

Information is believed to be accurate but not guaranteed.

