

RECREATIONAL TRACT

33.5± Acres in Neshoba County, MS



\$107,200

Discover your private oasis on this 33.5± acre Neshoba County property, featuring 1.5± acres of open space for your home or hunting camp, 15± acres of timberland, and a nice 1± acre pond. Enjoy the convenience of being only 4 miles away from Philadelphia, Mississippi, while having effortless access to the Neshoba County Fairgrounds just 2.2 miles away. This property already has water, power, and a treatment plant on site. Call Tyler to schedule your showing today! Directions from Intersection of Hwy 15 and MS 21 in Philadelphia, MS: Travel MS-21N for 4.2 miles. Turn left onto County Road 1333 and property will be on the left.



**TYLER
KILGORE**
REALTOR®

Office: 662.268.6333

Cell: 601.562.0688

Tyler@TomSmithLand.com



A Real Estate Expert You Can Trust

TomSmithLandandHomes.com

Lindyport
2011-2023
BEST



TYLER
KILGORE
REALTOR®

Office: 662.268.6333

Cell: 601.562.0688

Tyler@TomSmithLand.com



A Real Estate Expert You Can Trust

TomSmithLandandHomes.com





**TYLER
KILGORE**
REALTOR®

Office: 662.268.6333

Cell: 601.562.0688

Tyler@TomSmithLand.com



A Real Estate Expert You Can Trust

TomSmithLandandHomes.com





TYLER
KILGORE
REALTOR®

Office: 662.268.6333

Cell: 601.562.0688

Tyler@TomSmithLand.com



A Real Estate Expert You Can Trust

TomSmithLandandHomes.com



AERIAL MAP



[Interactive Map Link](#)



**TYLER
KILGORE**
REALTOR®

Office: 662.268.6333
Cell: 601.562.0688
Tyler@TomSmithLand.com

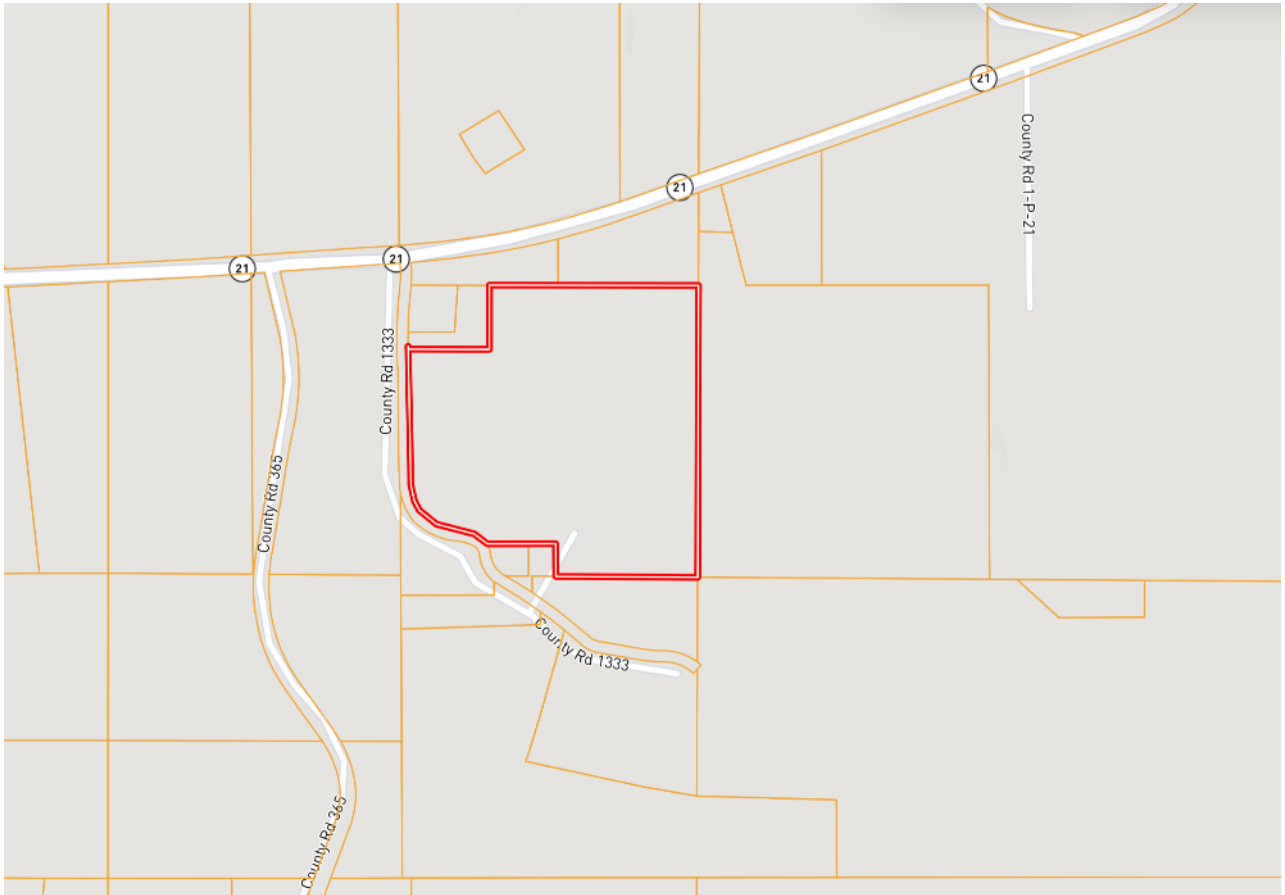


A Real Estate Expert You Can Trust

TomSmithLandandHomes.com



OWNERSHIP MAP



TYLER
KILGORE
REALTOR®

Office: 662.268.6333

Cell: 601.562.0688

Tyler@TomSmithLand.com

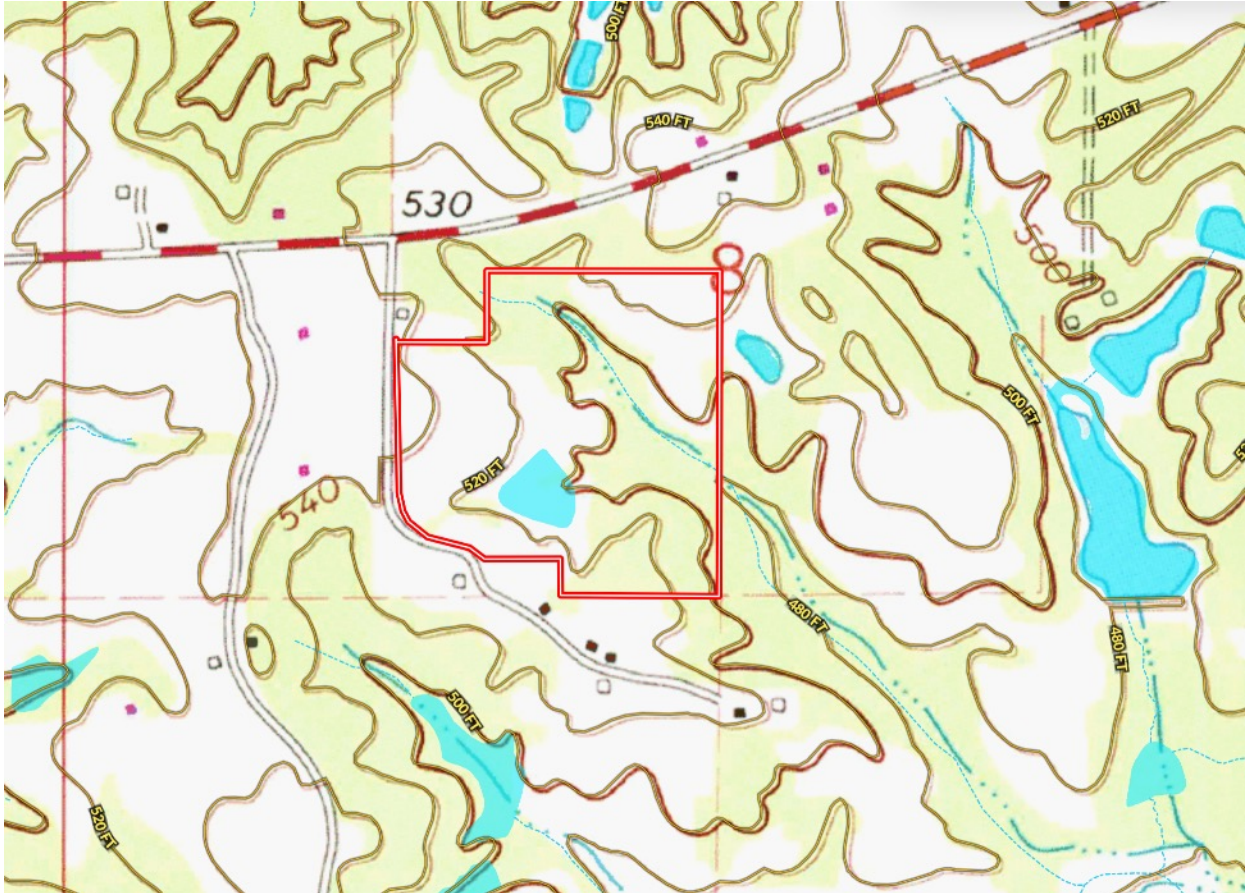


A Real Estate Expert You Can Trust

TomSmithLandandHomes.com



TOPO MAP



TYLER
KILGORE
REALTOR®

Office: 662.268.6333
Cell: 601.562.0688
Tyler@TomSmithLand.com

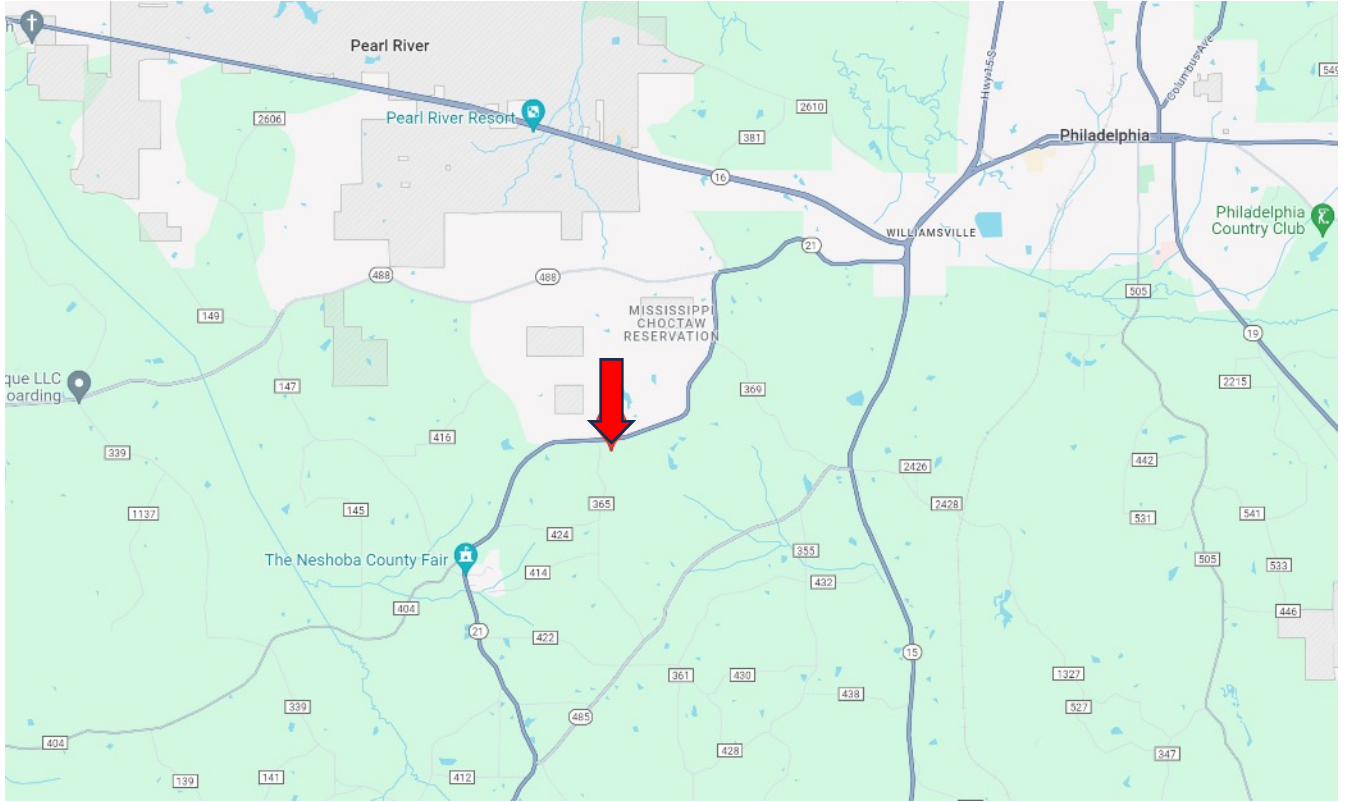


A Real Estate Expert You Can Trust

TomSmithLandandHomes.com



DIRECTIONAL MAP



Directions from Intersection of Hwy 15 and MS 21 in Philadelphia, MS: Travel MS-21N for 4.2 miles. Turn left onto County Road 1333. The property will be on the left.
[GOOGLE MAP LINK](#)



**TYLER
KILGORE**
REALTOR®

Office: 662.268.6333
Cell: 601.562.0688
Tyler@TomSmithLand.com



A Real Estate Expert You Can Trust

TomSmithLandandHomes.com

