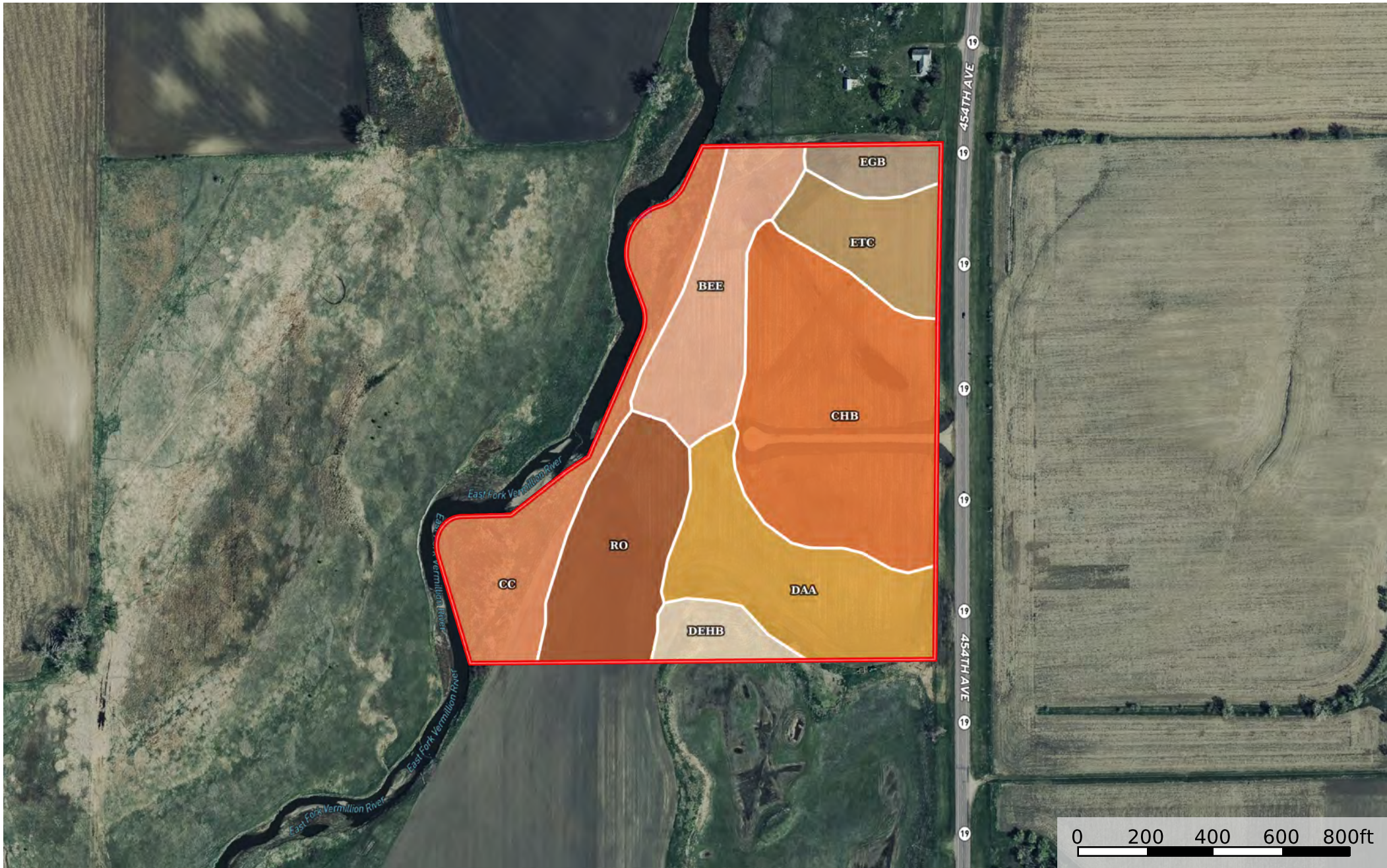



# Turner County, SD 31 Acres of Development

South Dakota, AC +/-



 Boundary

Boundary 32.24 ac

| SOIL CODE | SOIL DESCRIPTION   | ACRES    | %     | CPI   | NCCPI | CAP  |
|-----------|--|----------|-------|-------|-------|------|
| ChB       | Clarno-Bonilla loams, 1 to 6 percent slopes                    | 9.32     | 28.88 | 85    | 67    | 2e   |
| DaA       | Davis loam, 0 to 2 percent slopes                              | 5.22     | 16.18 | 89    | 69    | 1    |
| Cc        | Bon loam, channeled, 0 to 2 percent slopes, frequently flooded | 4.87     | 15.09 | 35    | 36    | 6w   |
| Ro        | Bon loam, 0 to 2 percent slopes, rarely flooded                | 4.3      | 13.33 | 85    | 76    | 2c   |
| BeE       | Betts-Ethan loams, 15 to 40 percent slopes                     | 3.82     | 11.84 | 19    | 12    | 7e   |
| EtC       | Ethan-Egan complex, 5 to 9 percent slopes                      | 2.5      | 7.75  | 70    | 69    | 4e   |
| DehB      | Delmont-Enet loams, high precipitation, 2 to 6 percent slopes  | 1.15     | 3.56  | 44    | 43    | 4s   |
| EgB       | Egan-Wentworth complex, 2 to 6 percent slopes                  | 1.06     | 3.28  | 85    | 69    | 2e   |
| TOTALS    |  | 32.24(*) | 100%  | 67.59 | 56.64 | 3.26 |

(\*) Total acres may differ in the second decimal compared to the sum of each acreage soil. This is due to a round error because we only show the acres of each soil with two decimal.

