



White Springs Tract

On White Springs Road, Itawamba County, MS

+/- 323.7 Acres

Timberland / Hunting / Recreation / Residential

\$681,114.00

P. O. Box 600

Gordo, AL 35466

205-364-7145

Dale Lancaster, Broker

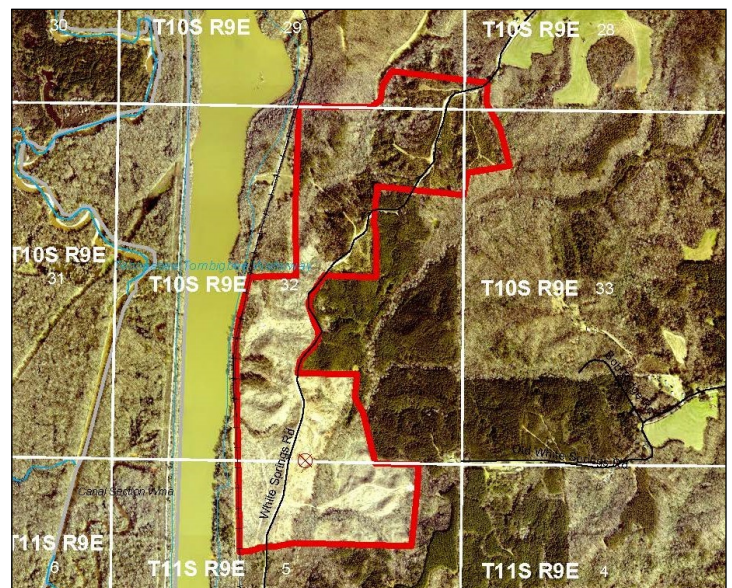
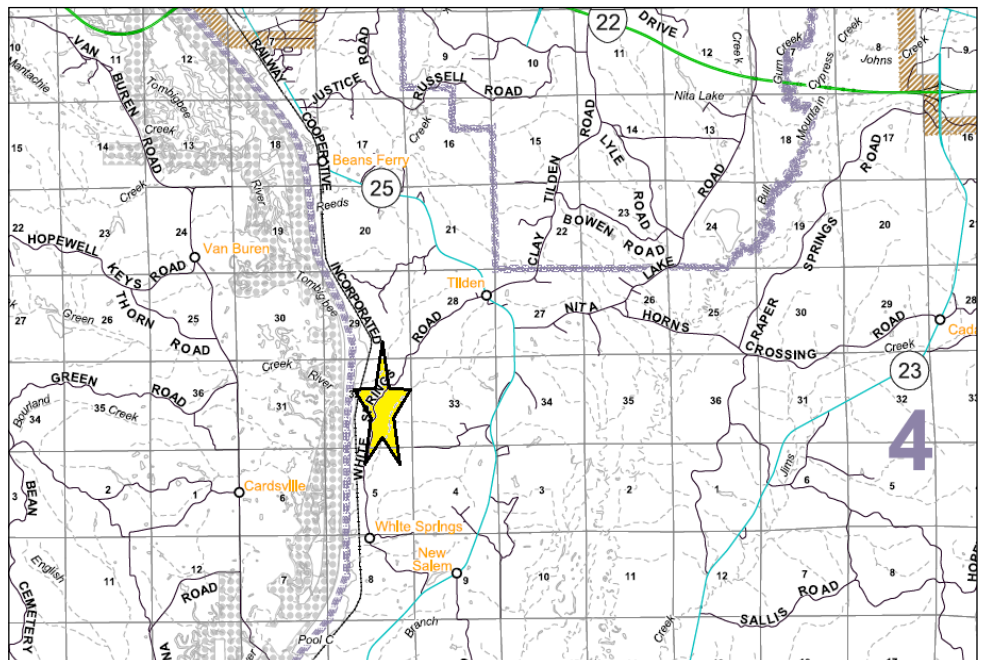
Sections 28, 29, 32, 33, Township 10 South, Range 9 East

Section 5, Township 11 South, Range 9 East

34.1614 -88.3756

For more info: www.midsouthforestry.com

Discover your ultimate outdoor retreat with this 323.7 +/- acres of timberland in Itawamba County, MS. Located just 7 miles from Smithville and 27 miles from Tupelo, this tract offers frontage on White Springs Road while immersing you in nature. With 151 +/- acres of naturally regenerating pine and hardwoods, plus 61 acres of thriving pine plantation established in 2018, you'll have the perfect canvas for your management plan. Enjoy abundant hunting opportunities, with deer, turkey, and small game thriving in this ideal habitat. Plus, the proximity to the Tennessee Tombigbee Waterway enhances your outdoor adventures. Whether you're looking for a private hunting haven, a place to unwind, or a smart investment, this land is a must-see. Seize the opportunity today!



All information furnished is assumed to be accurate and correct. However, neither the property owner nor Midsouth Forestry Services warrant the accuracy of information furnished. Prospective buyers should satisfy themselves as to the accuracy of this information. No representation or warranties are expressed or implied as to the property, its condition, boundaries, access, acres, zoning, condition of title or fair market value.

Rev. 022425