



## Lost Corner Tract

On Lost Corner Road, Monroe County, MS

+/- 648.5 Acres

Timberland / Hunting / Recreation

\$1,815,044.00

**P. O. Box 600**

**Gordo, AL 35466**

**205-364-7145**

Dale Lancaster, Broker

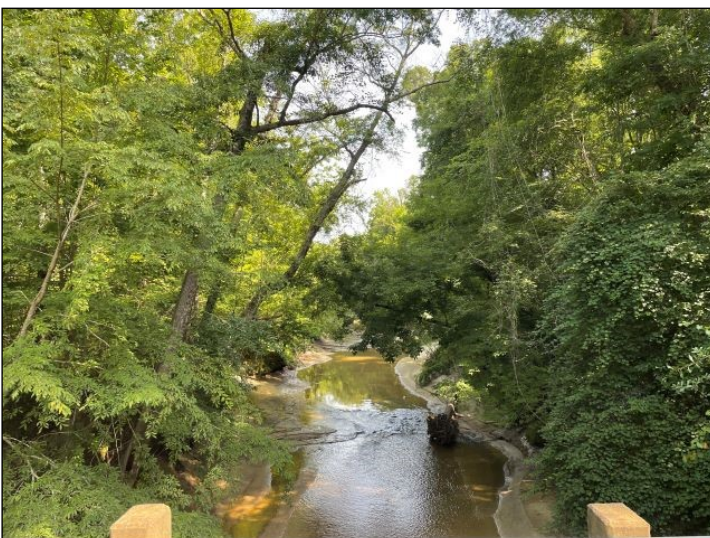
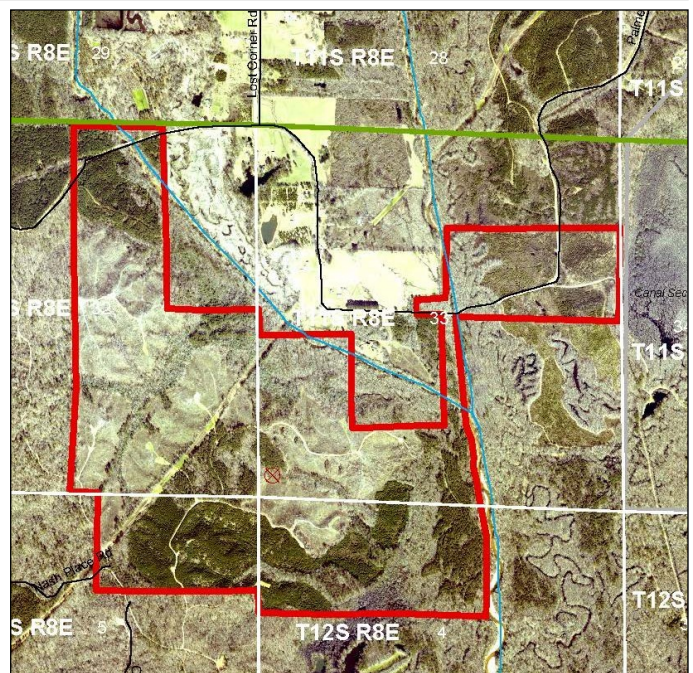
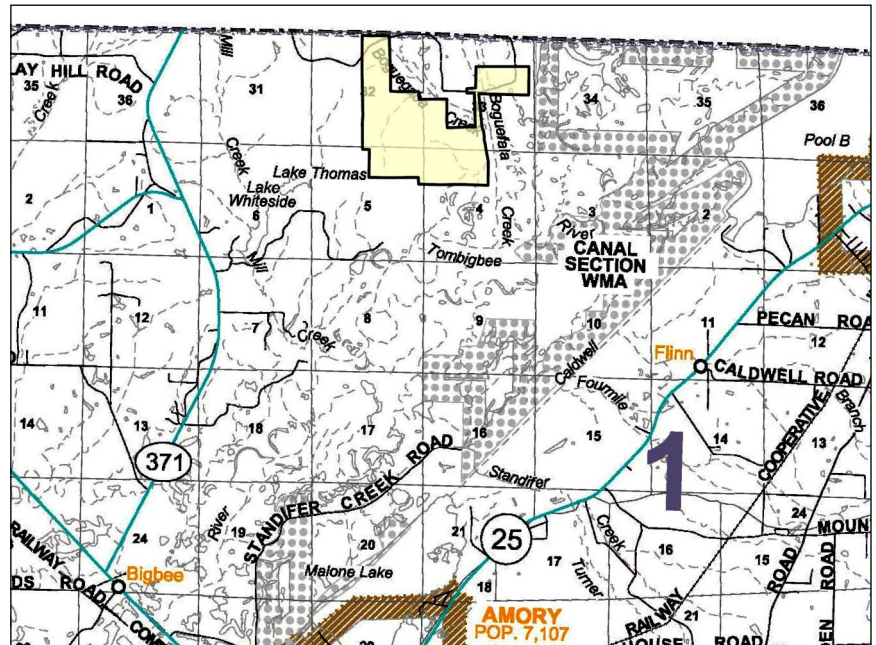
Sections 32 and 33, Township 11 South, Range 8 East

Sections 4 and 5, Township 12 South, Range 8 East

34.076, -88.4754

For more info: [www.midsouthforestryservices.com](http://www.midsouthforestryservices.com)

The Lost Corner Tract in Monroe County, MS, offers 648.5 +/- acres of prime real estate with rolling terrain and outstanding features. Accessed via Lost Corner Road, which crosses the northern edge in Section 32 and runs through Section 33, this property boasts over 400 +/- acres of varied-age pine plantations and over 200 +/- acres of mature hardwoods in key streamside management zones and bottomlands. Access to the southern portion of the tract is by Overlook Road through adjoining landowners. A utility transmission line running diagonally through the land enhances access and creates ideal hunting plots. Located just 8.5 miles from Amory and 23 miles from Fulton and Tupelo, this tract is perfect for hunting enthusiasts. Boguegaba Creek runs through the northeast corner and Boguefala Creek runs along the eastern border, adding to the tract's appeal. Ideal for timber investment and management, this property offers numerous assets and opportunities.



All information furnished is assumed to be accurate and correct. However, neither the property owner nor Midsouth Forestry Services warrant the accuracy of information furnished. Prospective buyers should satisfy themselves as to the accuracy of this information. No representation or warranties are expressed or implied as to the property, its condition, boundaries, access, acres, zoning, condition of title or fair market value.

Rev.022425