

4072 St. Matthews Road

Orangeburg, South Carolina 29118

Property Highlights

- ±44.84 acres
- Build to suit
- Located right off I-26 at Exit 145 (a heavily retail populated exit)
- Distance to:
- I-26: ±1 mile
- Columbia: ±40 miles
- Volvo Manufacturing Plant: ±48 miles
- SC Port of Charleston: ±78 miles

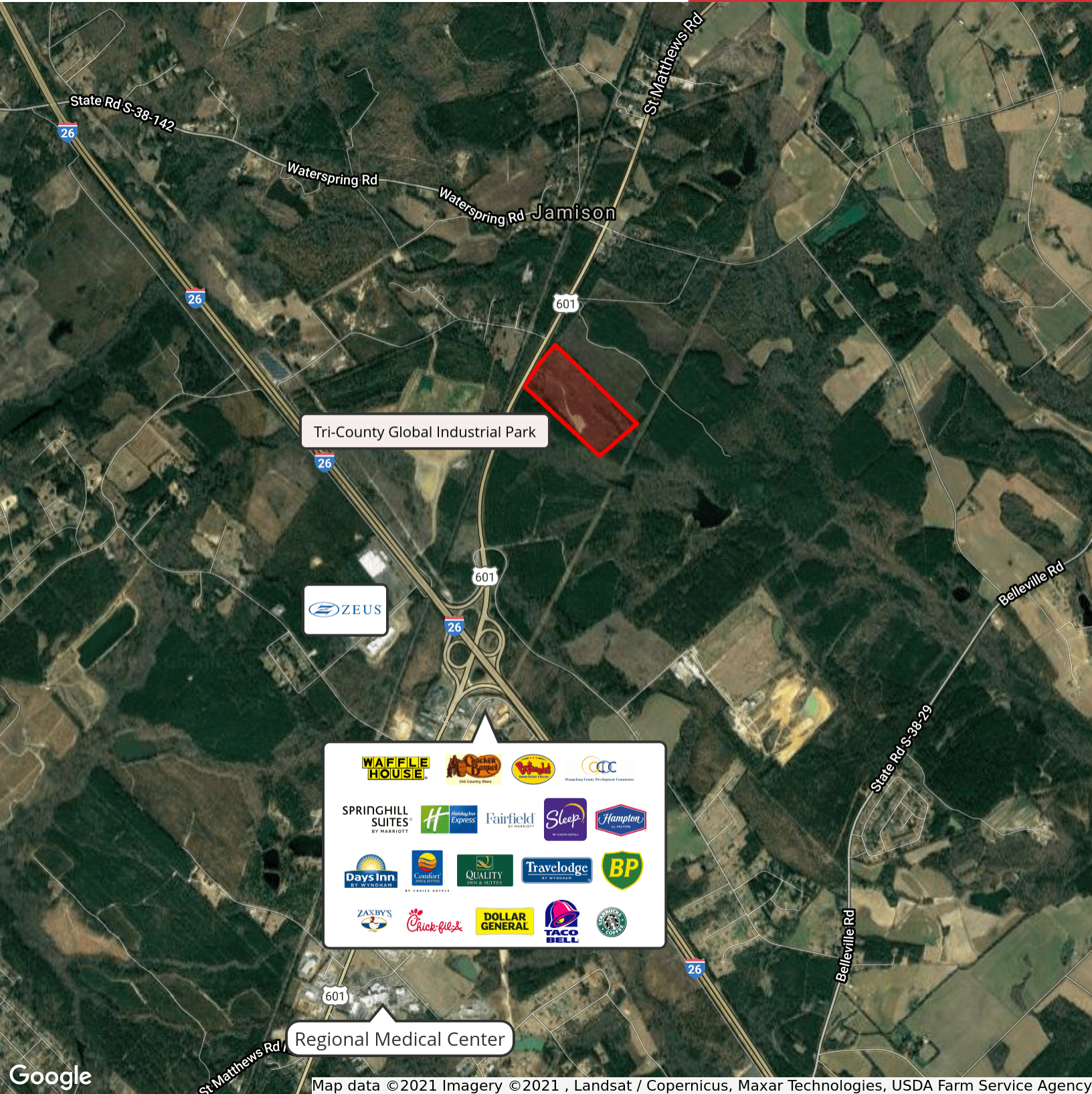


For More Information

Alex Campbell, CCIM

O: 864 678 5984

acampbell@naiearlefurman.com



Map data ©2021 Imagery ©2021, Landsat / Copernicus, Maxar Technologies, USDA Farm Service Agency

We obtained the information above from sources we believe to be reliable. However, we have not verified its accuracy and make no guarantee, warranty or representation about it. It is submitted subject to the possibility of errors, omissions, change of price, rental or other conditions, prior sale, lease or financing, or withdrawal without notice. We include projections, opinions, assumptions or estimates for example only, and they may not represent current or future performance of the property. You and your tax and legal advisors should conduct your own investigation of the property and transaction.

101 E Washington St, Suite 400
Greenville, SC 29601
864 232 9040 tel
naiearlefurman.com