

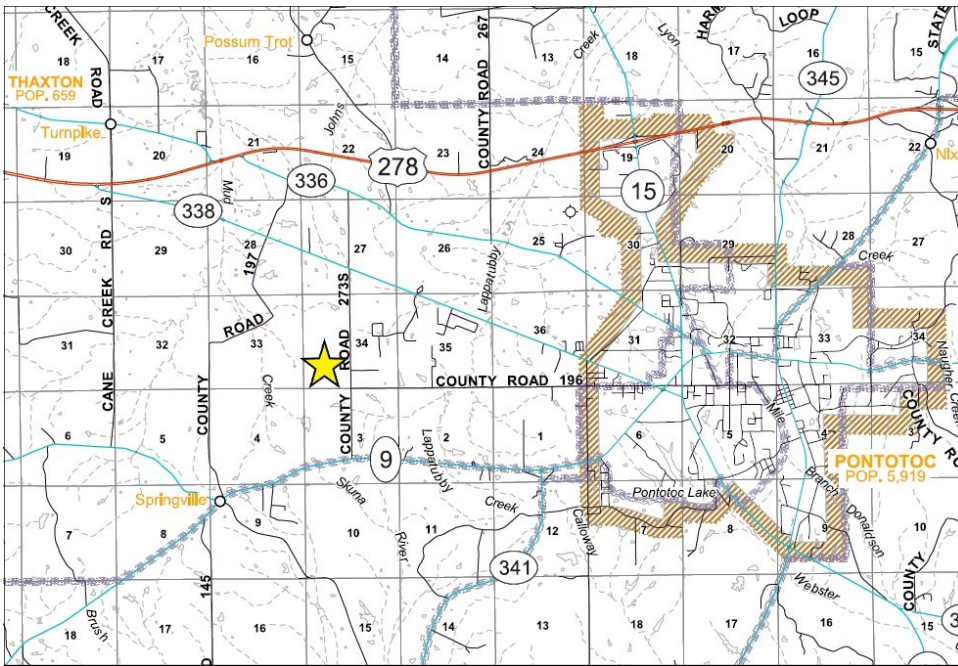


Chickasaw Meadows—Lot 11
 Pontotoc County, MS
 +/- 10 Acres
 Residential / Timberland
REDUCED! \$69,500.00

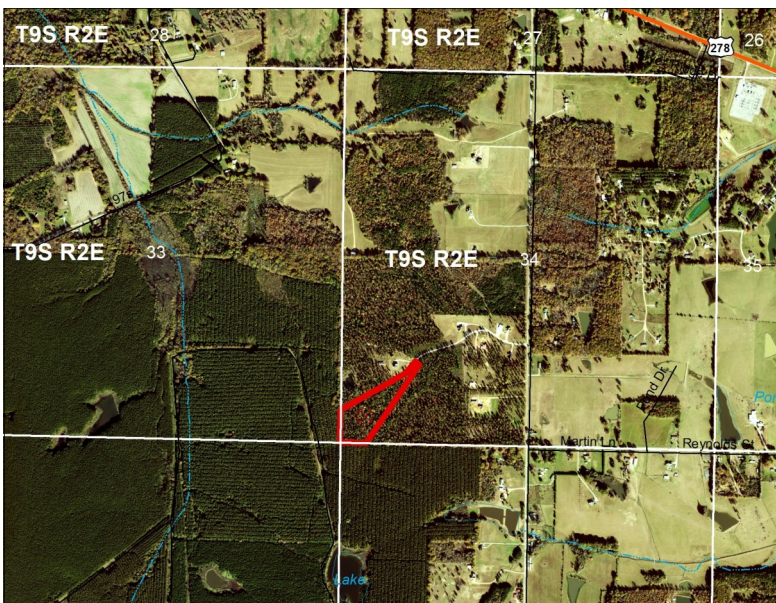
Section 34, Township 9 South, Range 2 East
 34.2503, -89.0866

P. O. Box 600
 Gordo, AL 35466
 205-364-7145
 www.midsouthforestryservices.com

For more info: www.midsouthforestryservices.com
 Dale Lancaster, Broker



Lot 11 of Chickasaw Meadows, an established residential subdivision in Pontotoc County, Mississippi, containing +/- 10 acres. This large, beautiful lot is wooded with pine and young hardwood understory, and offers privacy and room to roam. Numerous possibilities are available on this lot. With frontage on Chickasaw Trail Road, a 60 foot wide gray rocked road, this property is easily accessed. Water, electricity and gas are available. This property offers the tranquility of country living, with city amenities only 6 miles away at Pontotoc. Oxford and Tupelo, Mississippi are located within 30 miles or less, while New Albany, Mississippi is only 21 miles away. Take a look at this lot today – it's waiting for you and your dream home!



All information furnished is assumed to be accurate and correct. However, neither the property owner nor Midsouth Forestry Services warrant the accuracy of information furnished. Prospective buyers should satisfy themselves as to the accuracy of this information. No representation or warranties are expressed or implied as to the property, its condition, boundaries, access, acres, zoning, condition of title or fair market value.