

**000 HWY 61, HANKAMER 77560**  
CHAMBERS COUNTY

**73± ACRES | \$2,576,700**

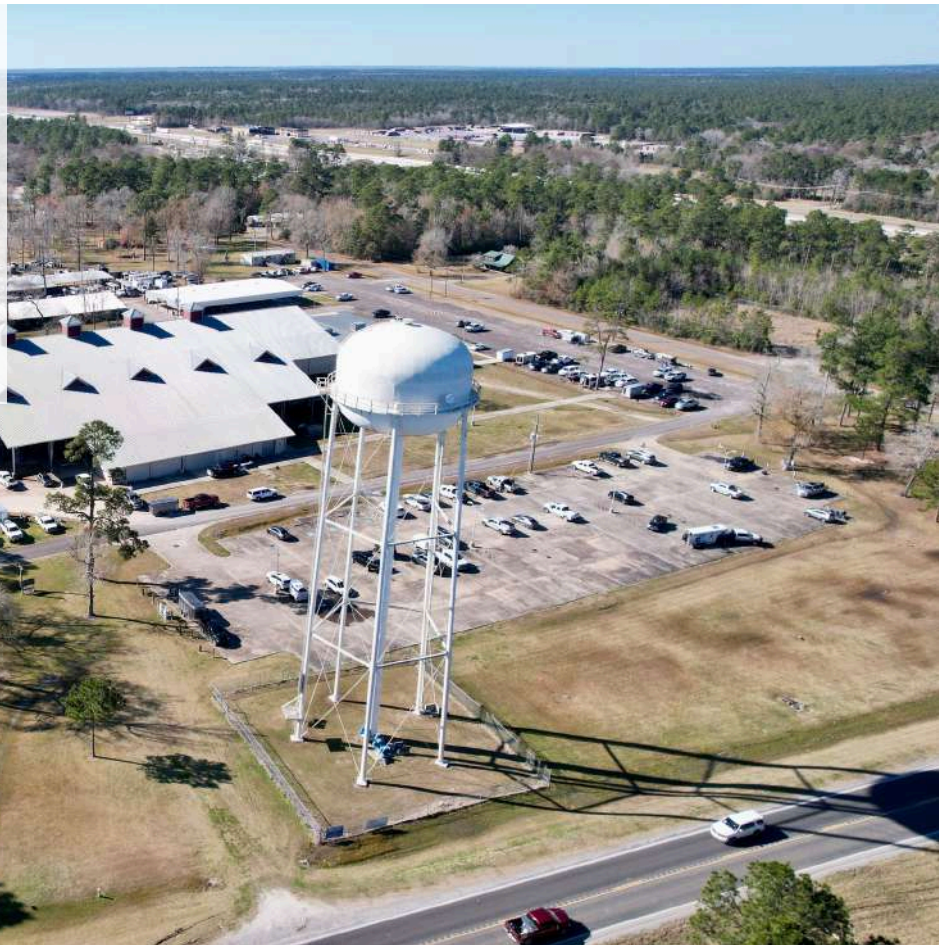


**COLDWELL BANKER**  
D'ANN HARPER, REALTORS®  
LAND & RANCH



## PROPERTY DESCRIPTION.

Prime development opportunity just a 45 minute drive from Downtown Houston. With 1,100 ft of State Highway 61 frontage, this 73 acre tract also borders the Chambers County Golf Course and sits across the road from White's Park. There are several new subdivisions being built in the vicinity. Water & Electricity available



THE INFORMATION PROVIDED HEREIN IS BELIEVED TO BE ACCURATE BUT IS NOT GUARANTEED BY ANDRUS LAND GROUP. DETAILS ARE SUBJECT TO CHANGE AT ANY TIME WITHOUT NOTICE.





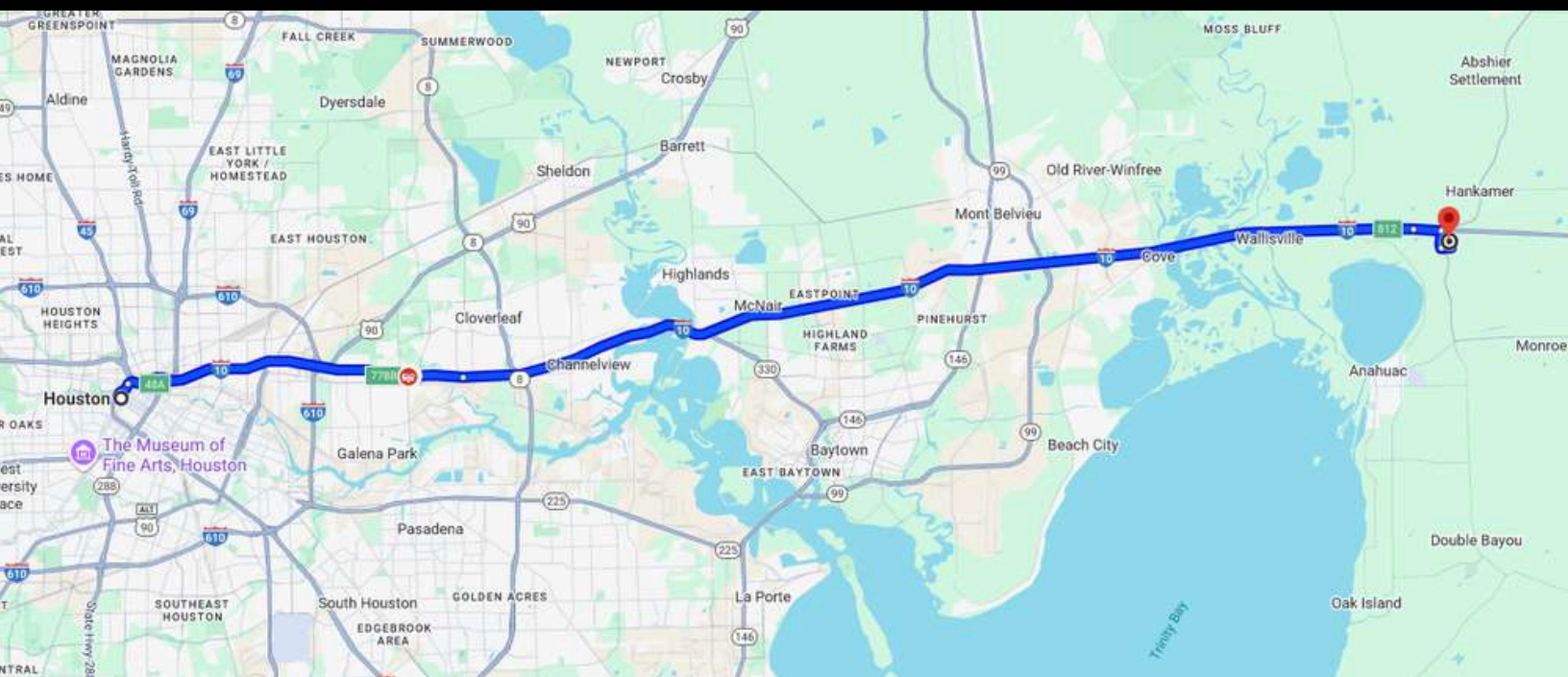
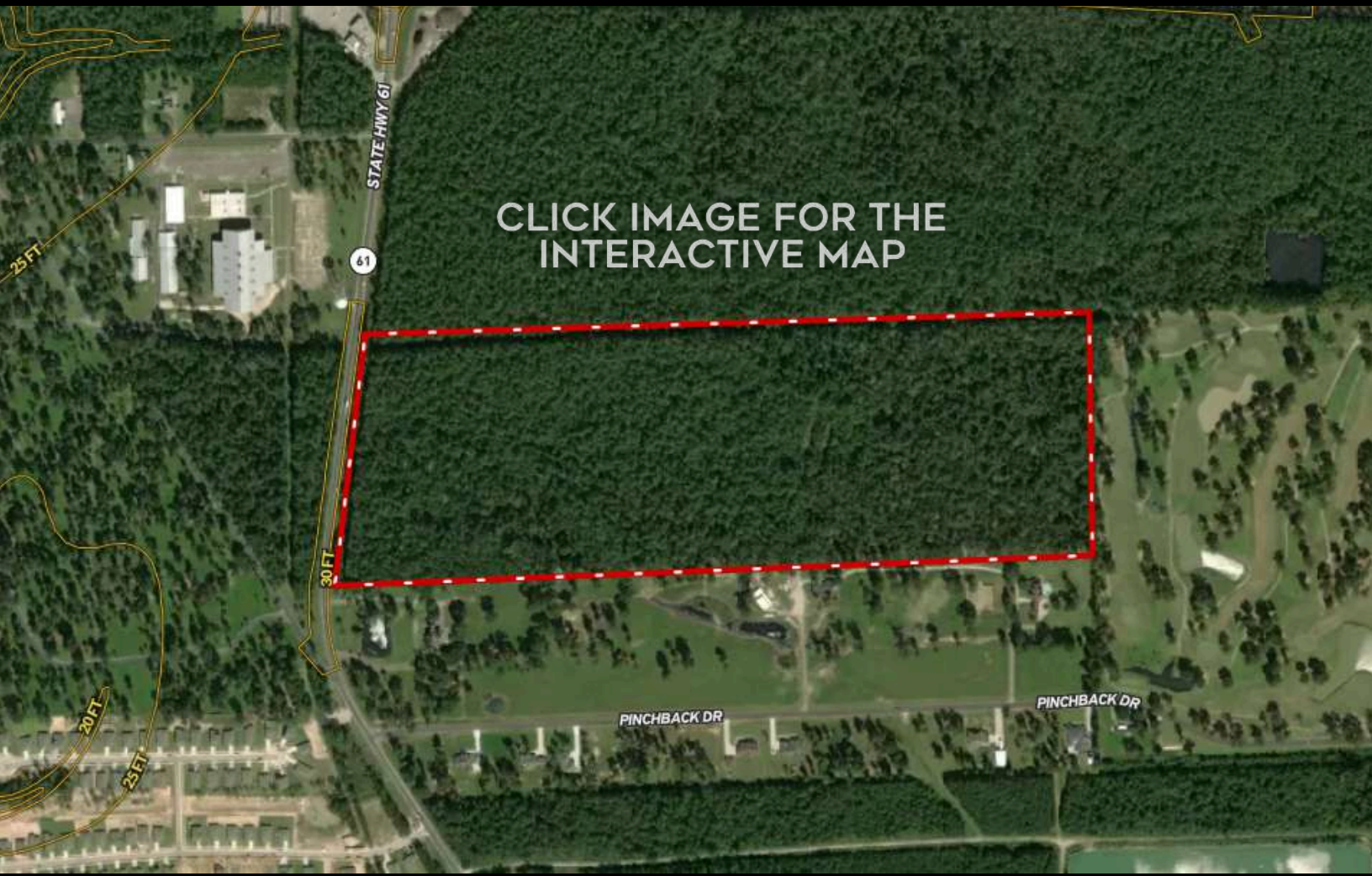
## PROPERTY FEATURES

Electricity, Hwy-County Rd Frontage, Development Potential, Rural Water



THE INFORMATION PROVIDED HEREIN IS BELIEVED TO BE ACCURATE BUT IS NOT GUARANTEED BY ANDRUS LAND GROUP. DETAILS ARE SUBJECT TO CHANGE AT ANY TIME WITHOUT NOTICE.





## NAVIGATION DIRECTIONS

### From Houston:

Travel I-10 west and take exit 811. Turn right on Hwy 61, travel .3 miles and property will be on your left.



## CHAD ANDRUS, ALC ACCREDITED LAND CONSULTANT

chad@andruslandgroup.com

832-402-9211

www.andruslandgroup.com



ALL MATERIALS AND INFORMATION RECEIVED OR DERIVED FROM ANDRUS LAND GROUP AND ITS DIRECTORS, OFFICERS, AGENTS, ADVISORS, AFFILIATES AND/OR ANY THIRD PARTY SOURCES ARE PROVIDED WITHOUT REPRESENTATION OR WARRANTY AS TO COMPLETENESS, VERACITY, OR ACCURACY, CONDITION OF THE PROPERTY, COMPLIANCE OR LACK OF COMPLIANCE WITH APPLICABLE GOVERNMENTAL REQUIREMENTS, DEVELOPABILITY OR SUITABILITY, FINANCIAL PERFORMANCE OF THE PROPERTY, PROJECTED FINANCIAL PERFORMANCE OF THE PROPERTY FOR ANY PARTY'S INTENDED USE OR ANY AND ALL OTHER MATTERS. NEITHER ANDRUS LAND GROUP, ITS DIRECTORS, OFFICERS, AGENTS, ADVISORS, OR AFFILIATES MAKES ANY REPRESENTATION OR WARRANTY, EXPRESS OR IMPLIED, AS TO ACCURACY OR COMPLETENESS OF THE MATERIALS OR INFORMATION PROVIDED, DERIVED, OR RECEIVED. MATERIALS AND INFORMATION FROM ANY SOURCE, WHETHER WRITTEN OR VERBAL, THAT MAY BE FURNISHED FOR REVIEW ARE NOT A SUBSTITUTE FOR A PARTY'S ACTIVE CONDUCT OF ITS OWN DUE DILIGENCE TO DETERMINE THESE AND OTHER MATTERS OF SIGNIFICANCE TO SUCH PARTY. ANDRUS LAND GROUP WILL NOT INVESTIGATE OR VERIFY ANY SUCH MATTERS OR CONDUCT DUE DILIGENCE FOR A PARTY UNLESS OTHERWISE AGREED IN WRITING. EACH PARTY SHALL CONDUCT ITS OWN INDEPENDENT INVESTIGATION AND DUE DILIGENCE.

# Ranch. financing made simple



**WINNIE OFFICE**

NMLS493828 | 409.400.4066 | capitalfarmcredit.com



**Anthony Vaughan**