

Copiah County Commercial Property



Are you looking to start your brick-and-mortar small business in Copiah County, MS? This opportunity only comes around sometimes. This newly listed turn-key convenient store is located on a .52+/- acre lot on the corner of Monticello St. and Beasley St. in Hazlehurst, MS. The property location, combined with the facility and equipment, makes this a prime location to be utilized as a small convenience store or anything you can think of. Come take a look at the potential this commercial property holds. Call Mike for a private showing today!

Directions from I-55 North and Hwy 28 in Hazlehurst, MS: Take exit 61 for Hazlehurst/MS-28 E and merge onto MS-28 E. Turn right onto Caldwell Dr. and travel 1.1 miles. Continue onto South Ext St. for 177 ft, then turn left onto W Frost St. Travel .1 mile, then turn right onto Monticello St. After .9 miles, the property will be on the left. Address: 2001 Monticello St, Hazlehurst, MS 39083



**MIKE
ODOM**
REALTOR®

Office: 601.898.2772

Cell: 601.927.5018

MikeOdom@TomSmithLand.com



A Real Estate Expert You Can Trust

TomSmithLandandHomes.com

Information is believed to be accurate but not guaranteed.





MIKE ODOM
REALTOR®

Office: 601.898.2772
Cell: 601.927.5018

MikeOdom@TomSmithLand.com



A Real Estate Expert You Can Trust
TomSmithLandandHomes.com

Information is believed to be accurate but not guaranteed.





MIKE ODOM
REALTOR®

Office: 601.898.2772
Cell: 601.927.5018

MikeOdom@TomSmithLand.com



A Real Estate Expert You Can Trust
TomSmithLandandHomes.com

Information is believed to be accurate but not guaranteed.



Aerial Map



[CLICK HERE FOR AN INTERACTIVE MAP LINK](#)

MIKE ODOM
REALTOR®

Office: 601.898.2772

Cell: 601.927.5018

MikeOdom@TomSmithLand.com

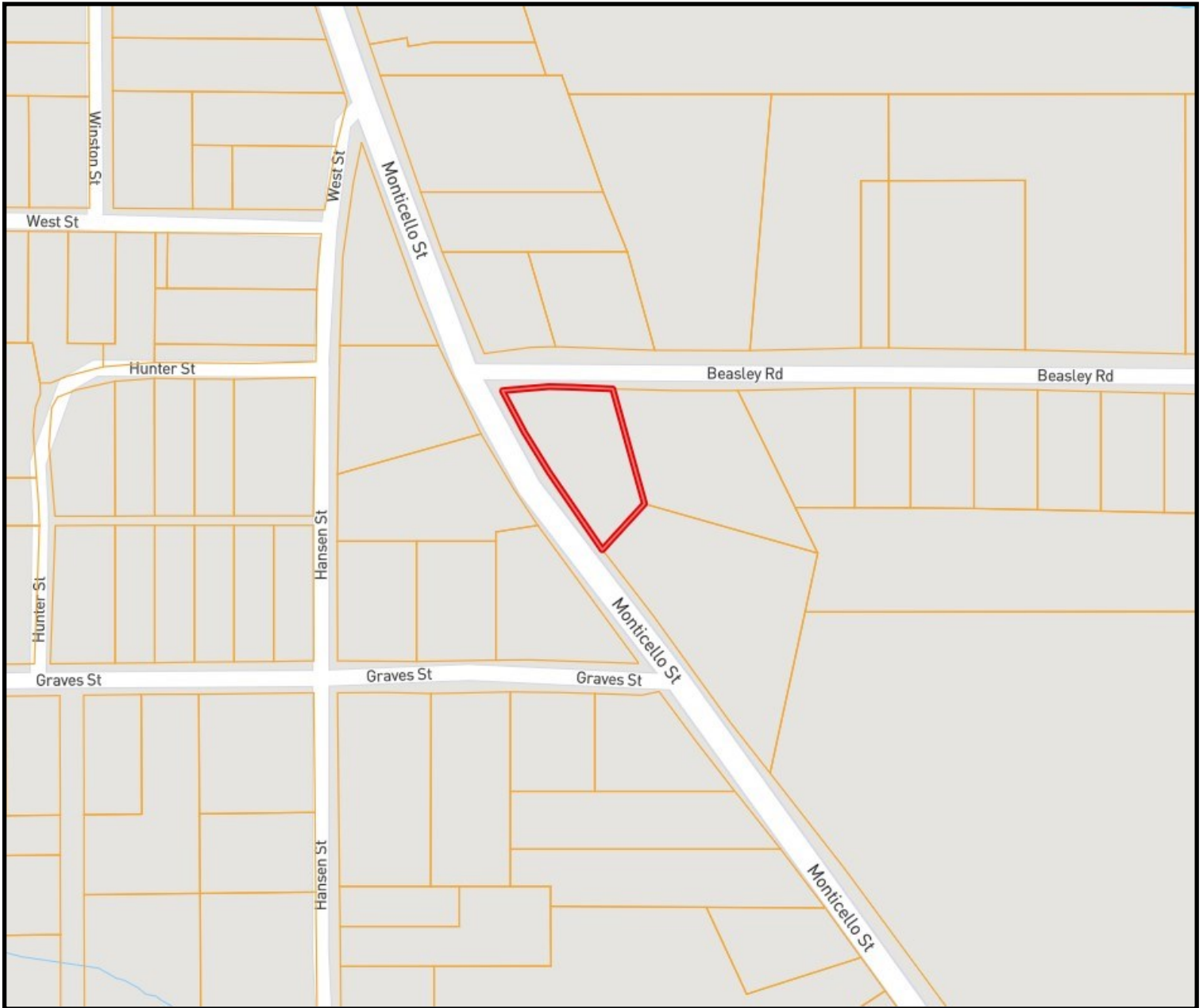


A Real Estate Expert You Can Trust
TomSmithLandandHomes.com

Information is believed to be accurate but not guaranteed.



OWNERSHIP Map



MIKE ODOM
REALTOR®

Office: 601.898.2772

Cell: 601.927.5018

MikeOdom@TomSmithLand.com

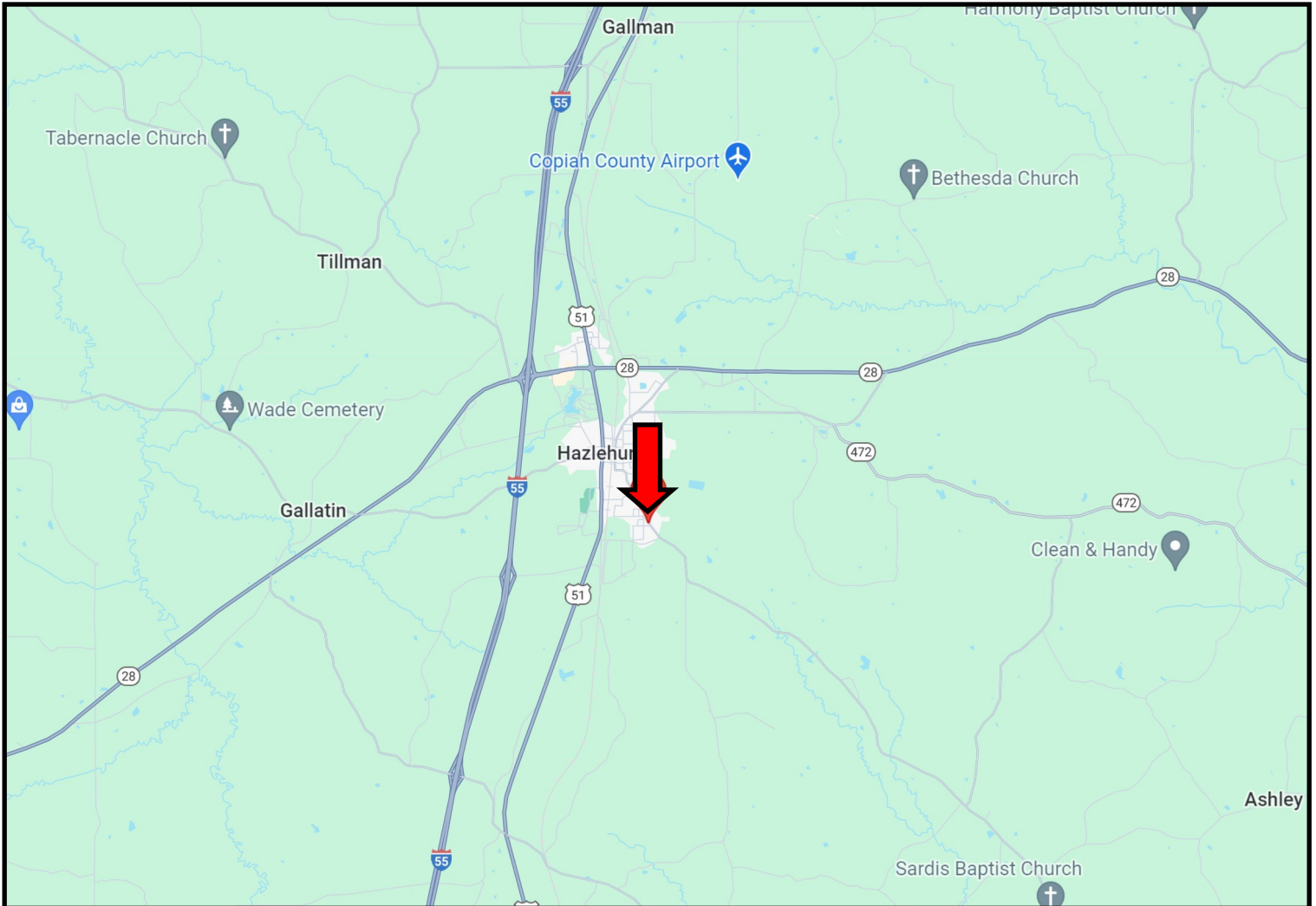


A Real Estate Expert You Can Trust
TomSmithLandandHomes.com

Information is believed to be accurate but not guaranteed.



DIRECTIONAL Map



Directions from I-55 South and Hwy 28 in Hazlehurst, MS: Take exit 61 for Hazlehurst/MS-28 E and merge onto Hwy 28 E. Travel Hwy 28 for .8 miles. Turn right onto Hwy 51 S and travel 1.1 miles. Turn left onto W Frost St. and then immediately turn right onto Monticello St. After .9 miles, the property will be on the right. Address: 2001 Monticello St, Hazlehurst, MS 39083 - [Click for Directions](#)



**MIKE
ODOM**
REALTOR®

Office: 601.898.2772

Cell: 601.927.5018

MikeOdom@TomSmithLand.com



A Real Estate Expert You Can Trust

TomSmithLandandHomes.com

Information is believed to be accurate but not guaranteed.

