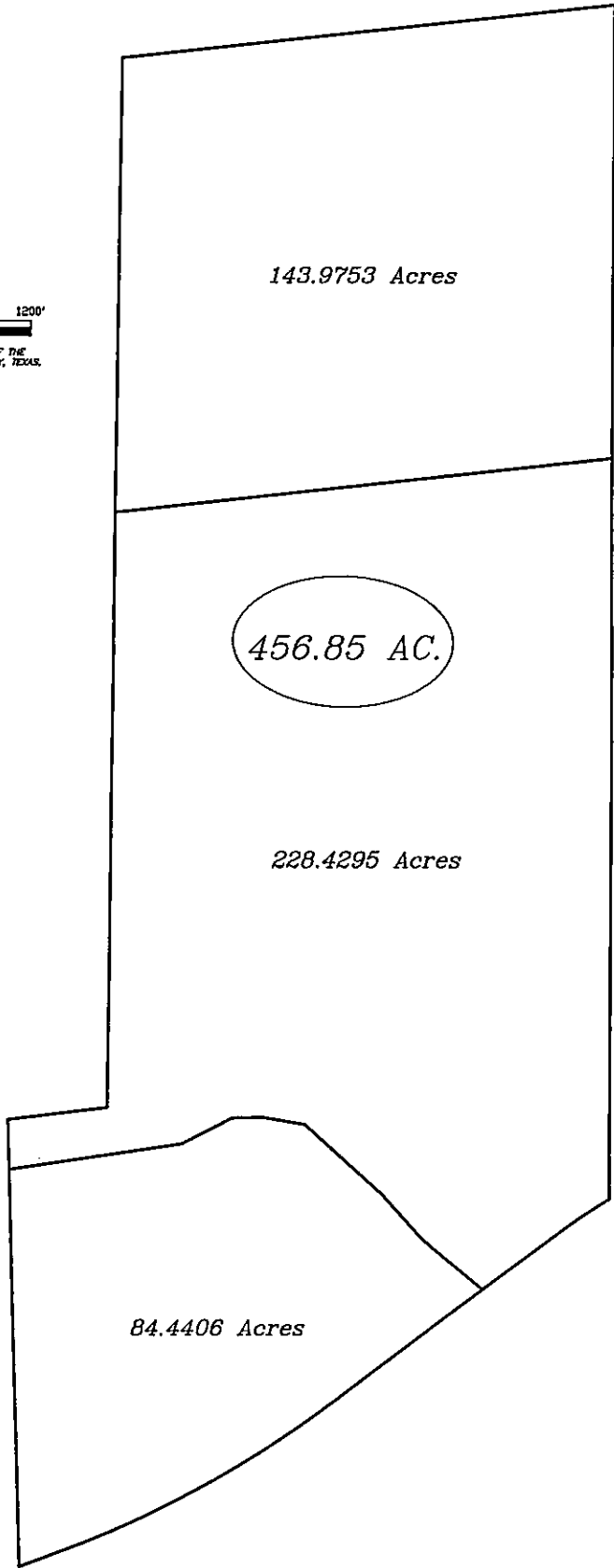


SKETCH SHOWING PROPOSED DIVISION OF THE ARMSTRONG PROPERTY IN LLANO COUNTY, TEXAS.



143.9753 Acres

456.85 AC.

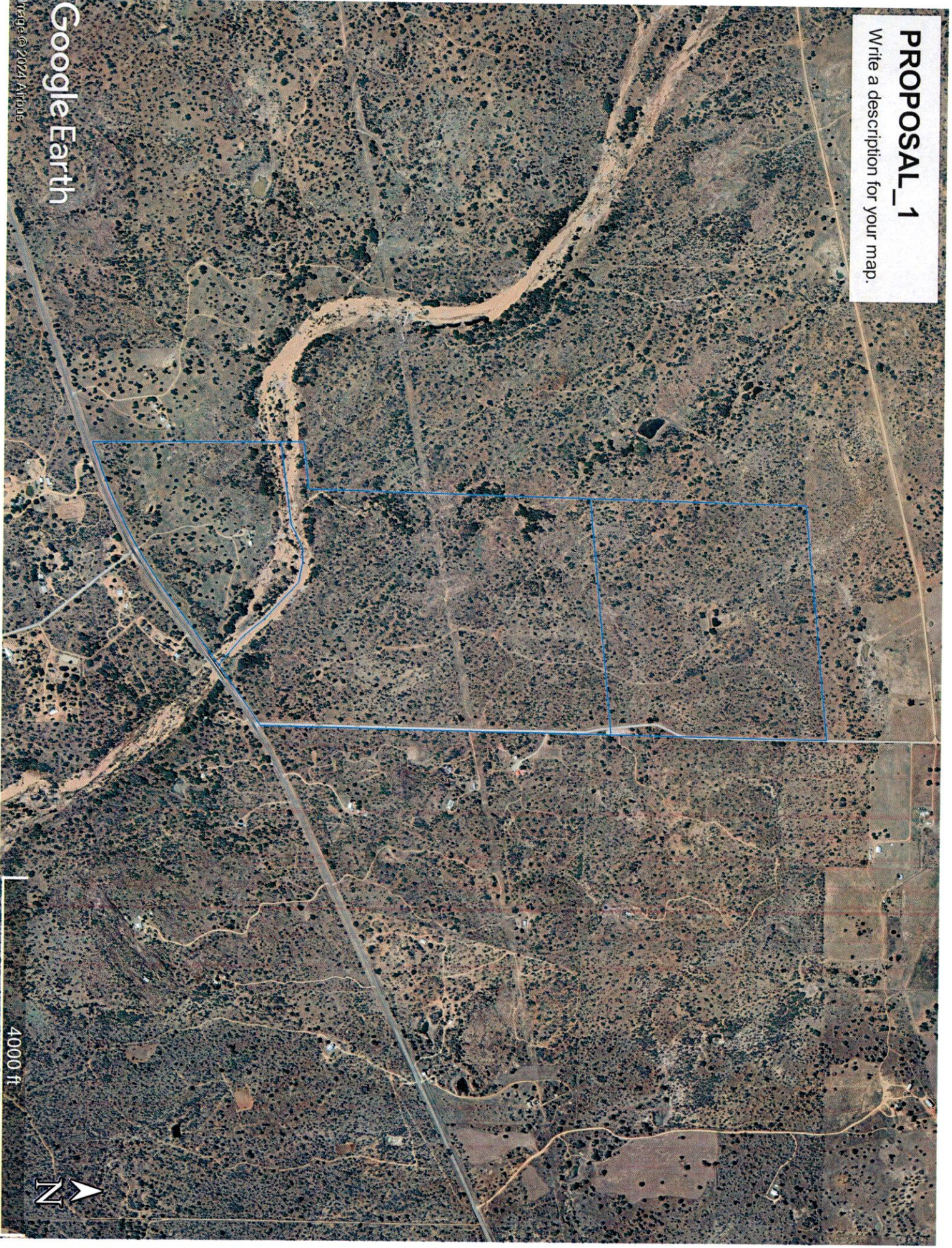
228.4295 Acres

84.4406 Acres



# PROPOSAL\_1

Write a description for your map.



Google Earth

Image © 2024 Airbus



40000 ft