



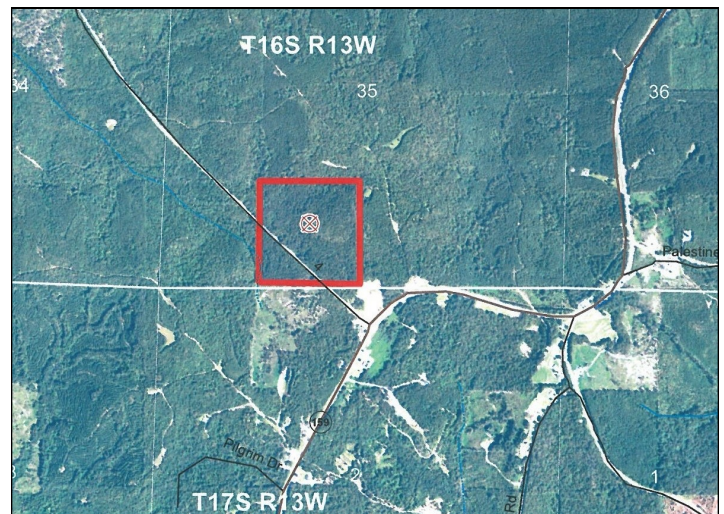
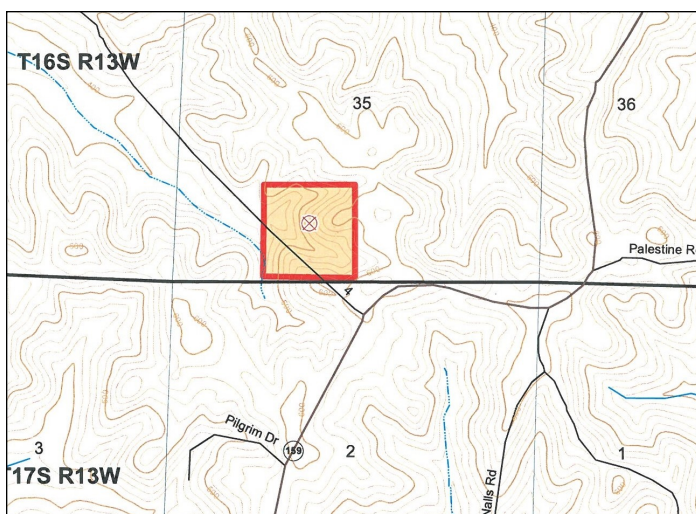
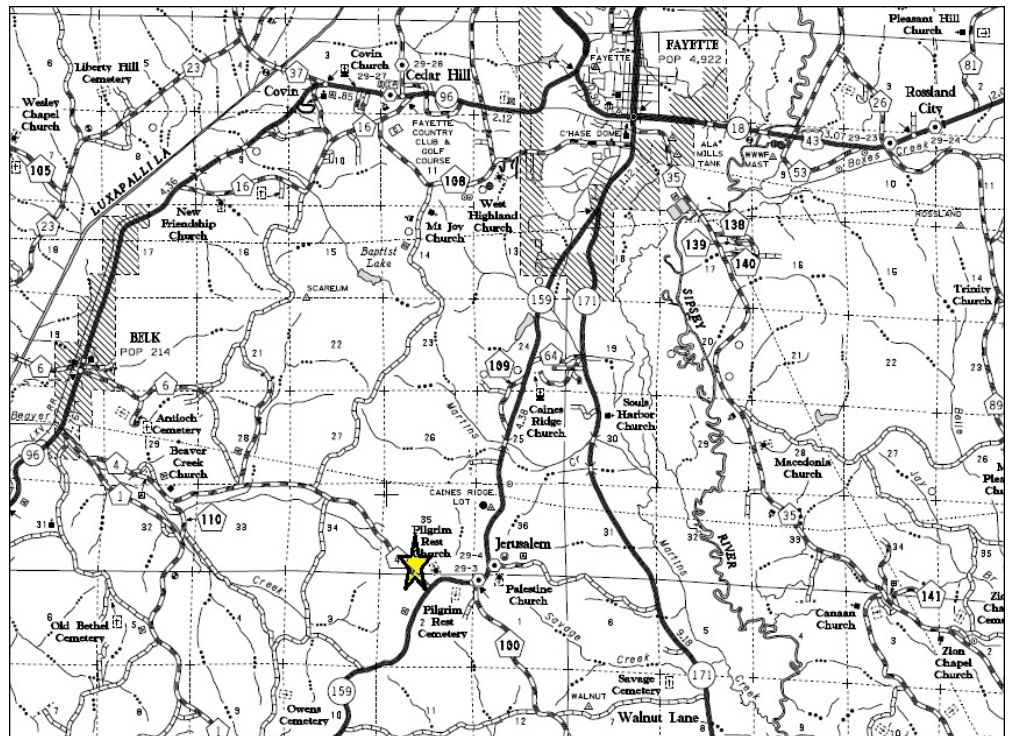
P. O. Box 600  
Gordo, AL 35466  
205-364-7145  
Dale Lancaster, Broker

**SU121112 Fayette Tract**  
Fayette County, AL  
+/- 40.90 Acres  
Timberland / Hunting / Recreation  
\$84,867.50

Section 35, Township 16 South, Range 13 West  
33.6146, -87.8695

For more info: [www.midsouthforestryservices.com](http://www.midsouthforestryservices.com)

+/- 40.90 acres timberland with a 2018 pine plantation located in southern Fayette County, Alabama and frontage on paved County Road 4 (Beaver Creek Road). Tract is located only 6 miles south of Fayette and 35 miles northwest of Tuscaloosa, Alabama. This tract is conveniently located from the amenities of town while offering excellent hunting opportunities for deer, and small game, along with future timber income from the established pine plantation. Great sized tract if you are new to timber investment, or just want a place to get away. Tract has opportunities for residential or small farm use with availability of county water and electricity!



All information furnished is assumed to be accurate and correct. However, neither the property owner nor Midsouth Forestry Services warrant the accuracy of information furnished. Prospective buyers should satisfy themselves as to the accuracy of this information. No representation or warranties are expressed or implied as to the property, its condition, boundaries, access, acres, zoning, condition of title or fair market value.