

VERSATILE COMMERCIAL BUILDING

5.7± ACRES IN WASHINGTON COUNTY, MS



401 Bailey Road, Hollandale, MS 38748

\$372,000

This 6,405 sq ft commercial property is located on a 5.7± acre lot in Washington County, MS. It was formerly used as a mental health facility and offers versatile potential for various business purposes. Inside, you'll find multiple private offices and cubicle workspaces, providing ample flexibility for any business setup. The spacious conference room is perfect for meetings and private events. The facility is fully furnished with desks, chairs, copiers, computers, and media equipment, ready for immediate use. Upon request, the previous owner can also offer financial insights into the building's past operations and capabilities. The building and the grounds are well-maintained, offering a professional and welcoming environment. Contact Bruce today to schedule a tour of your new business facility!



**BRUCE
WEST**

ALC®, ASSOCIATE BROKER
ACCREDITED LAND CONSULTANT

Office: 662.441.2500

Cell: 662.873.3007

Bruce@TomSmithLand.com



Expect More. Get More.

A Real Estate Expert You Can Trust

TomSmithLandandHomes.com

Information is believed to be accurate but not guaranteed.





A Real Estate Expert You Can Trust!

BRUCE WEST

ALC®, ASSOCIATE BROKER
ACCREDITED LAND CONSULTANT

O: 662.441.2500 C: 662.873.3007

Bruce@TomSmithLand.com

TomSmithLandandHomes.com

**Tom
Smith
LAND AND
HOMES**

Expect More. Get More.

2011-2024
**BEST
BROKERAGES**

Information is believed to be accurate but not guaranteed.



A Real Estate Expert You Can Trust!

BRUCE WEST

ALC®, ASSOCIATE BROKER
ACCREDITED LAND CONSULTANT

O: 662.441.2500 C: 662.873.3007

Bruce@TomSmithLand.com

TomSmithLandandHomes.com



Expect More. Get More.



Information is believed to be accurate but not guaranteed.



A Real Estate Expert You Can Trust!

BRUCE WEST

ALC®, ASSOCIATE BROKER
ACCREDITED LAND CONSULTANT

O: 662.441.2500 C: 662.873.3007

Bruce@TomSmithLand.com

TomSmithLandandHomes.com

**Tom
Smith
LAND AND
HOMES**

Expect More. Get More.

2011-2024
**BEST
BROKERAGES**

Information is believed to be accurate but not guaranteed.



A Real Estate Expert You Can Trust!

BRUCE WEST

ALC®, ASSOCIATE BROKER
ACCREDITED LAND CONSULTANT

O: 662.441.2500 C: 662.873.3007

Bruce@TomSmithLand.com

TomSmithLandandHomes.com



Expect More. Get More.



Information is believed to be accurate but not guaranteed.



A Real Estate Expert You Can Trust!

BRUCE WEST

ALC®, ASSOCIATE BROKER
ACCREDITED LAND CONSULTANT

O: 662.441.2500 C: 662.873.3007

Bruce@TomSmithLand.com

TomSmithLandandHomes.com

**Tom
Smith
LAND AND
HOMES**

Expect More. Get More.

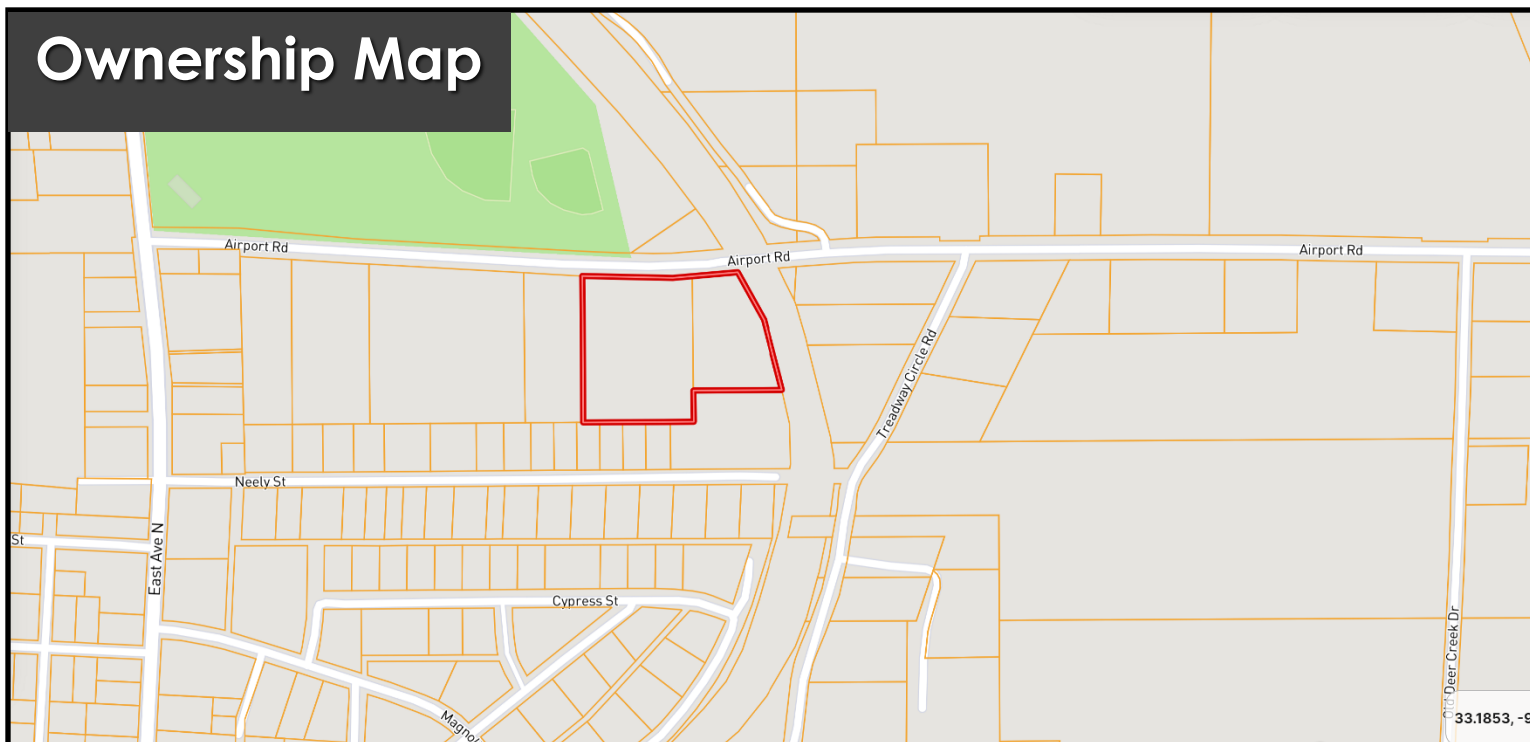
2011-2024
**BEST
BROKERAGES**

Information is believed to be accurate but not guaranteed.

Aerial Map



Ownership Map



A Real Estate Expert
You Can Trust!

BRUCE WEST

ALC®, ASSOCIATE BROKER
ACCREDITED LAND CONSULTANT

O: 662.441.2500 C: 662.873.3007

Bruce@TomSmithLand.com

TomSmithLandandHomes.com

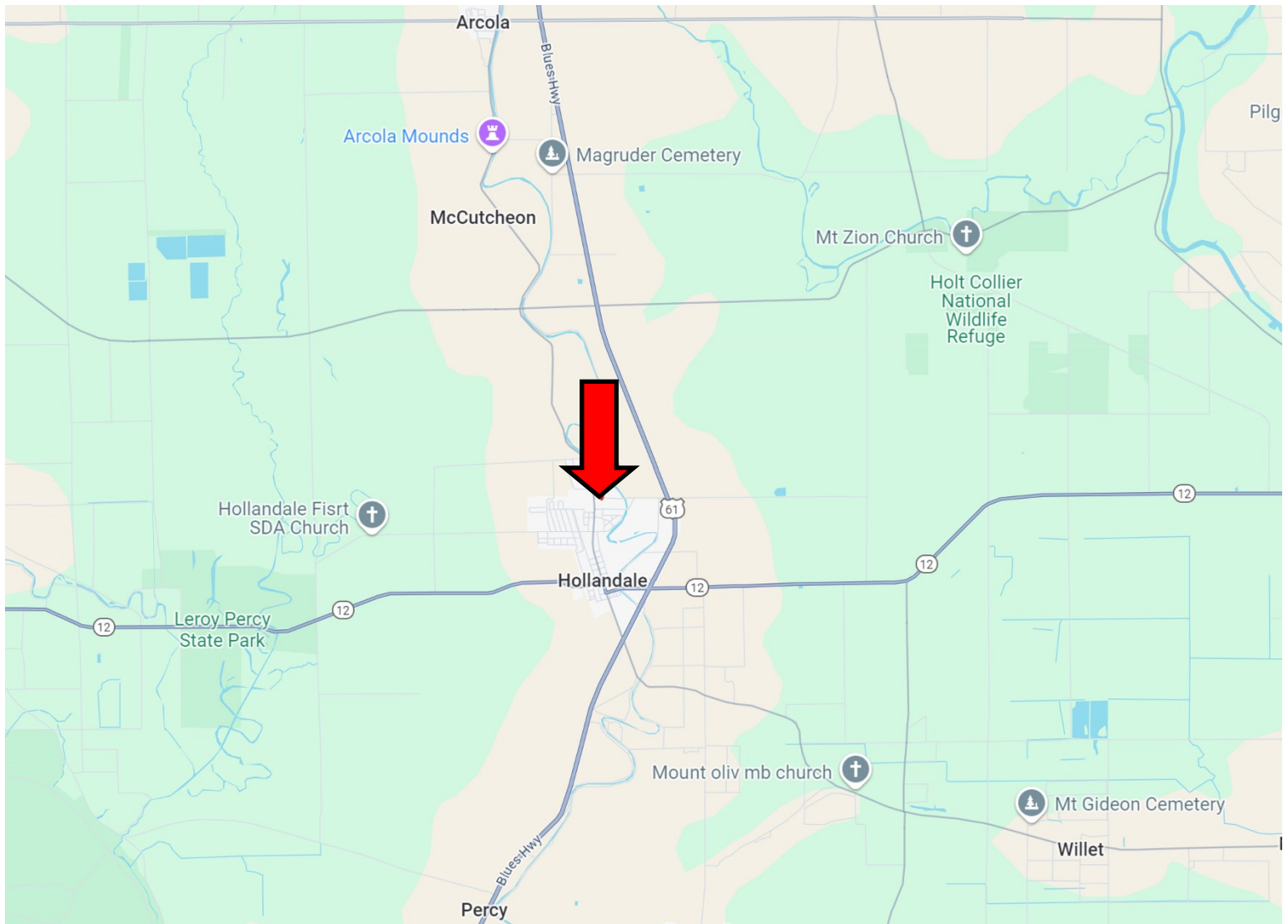
**Tom
Smith
LAND AND
HOMES**

Expect More. Get More.

2011-2024
BEST
BROKERAGES

Information is believed to be accurate but not guaranteed.

Directional Map



Directions from the intersection of Hwy 12 and Hwy 61 in Hollandale, MS: Travel Hwy 61 North for 1.2 miles. Turn left on- to Airport Road, which becomes Bailey Road. After 0.8 miles, the property will be on your left.

401 Bailey Road, Hollandale, MS 38748 [GOOGLE MAP LINK](#)



**BRUCE
WEST**

ALC®, ASSOCIATE BROKER
ACCREDITED LAND CONSULTANT

Office: 662.441.2500

Cell: 662.873.3007

Bruce@TomSmithLand.com



Expect More. Get More.

A Real Estate Expert You Can Trust

TomSmithLandandHomes.com

Information is believed to be accurate but not guaranteed.

