

16± ACRES
WAYNE COUNTY, MS
\$51,200



SMALLTOWN
HUNTING PROPERTIES
& REAL ESTATESM

OFFICE (769) 760-0005

THE WAYNE 16

PROPERTY PROFILE

LOCATION:

- Wayne County, MS
- Pine Grove Road Frontage
- 20± Miles South of Waynesboro

COORDINATES:

- 31.559469, -88.848181

PROPERTY USE:

- Recreational Getaway
- Potential Home Site
- Potential Mini Farm

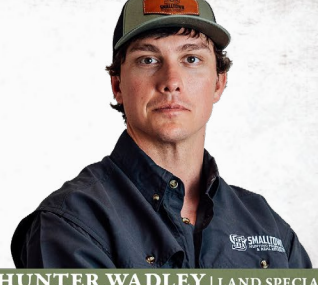
PROPERTY INFORMATION:

- 16± Acres
- County Road Frontage
- Gently Rolling Terrain
- Young Natural Mixed Timber
- Power and Water Nearby
- De Soto National Forest Frontage

TAX INFORMATION:

\$50 Estimated

- Parcel: Part of 203-24-00000200



DENNIS WEST | MANAGING BROKER
C: 601-248-4396 | dennis@smalltownproperties.com

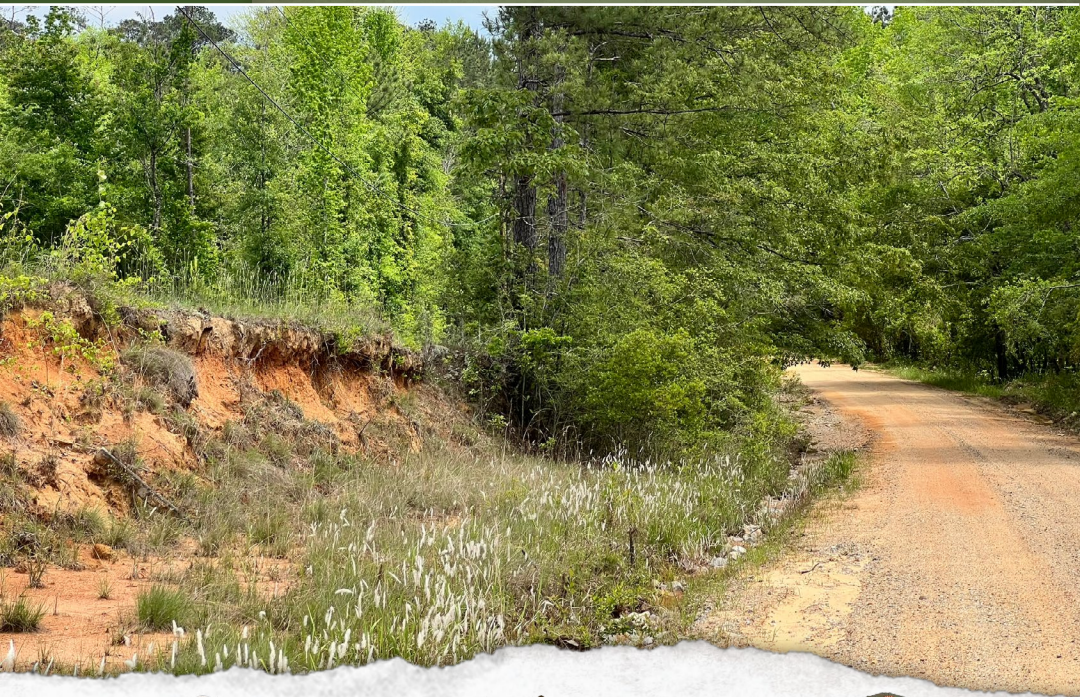
HUNTER WADLEY | LAND SPECIALIST
C: 601-410-1992 | hunter.wadley@smalltownproperties.com

2121 5th St., Ste 206 - Meridian, MS 39301 | O: 769-760-0005 | smalltownproperties.com Information is believed to be accurate but not guaranteed.

WELCOME TO THE WAYNE 16

HAVE YOU BEEN SEARCHING FOR A SMALL ACREAGE TRACT, IN THE HEART OF THE DE SOTO NATIONAL FOREST, TO BUILD A HOME, START A MINI FARM OR GET AWAY FROM THE BIG CITY? This 16± acres in Wayne County, MS offers frontage on Pine Grove Road perfect for a cabin or home site! This property is located approximately 20 miles South of Waynesboro with a convenient proximity to Laurel and Hattiesburg for dining and entertainment. The property make-up consists of gently rolling terrain with some scattered trees. Utilities are available at the road. Bordering the National Forest allows access to thousands of acres of public hunting and unlimited recreation potential. Public fishing is less than a half mile away on Thompson Creek. More property available. Survey required.

Contact Dennis West or Hunter Wadley
to schedule a private showing.



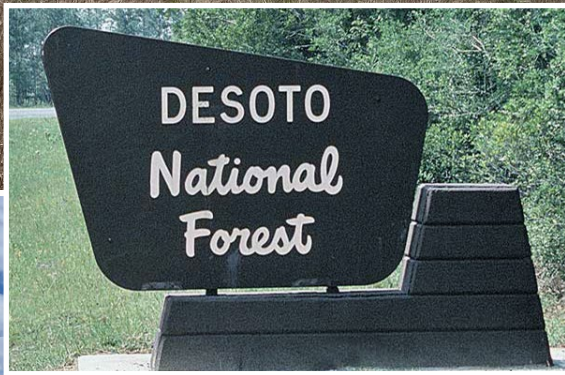
DENNIS WEST | MANAGING BROKER
C: 601-248-4396 | dennis@smalltownproperties.com

HUNTER WADLEY | LAND SPECIALIST
C: 601-410-1992 | hunter.wadley@smalltownproperties.com

2121 5th St., Ste 206 - Meridian, MS 39301 | O: 769-760-0005 | smalltownproperties.com Information is believed to be accurate but not guaranteed.

16± ACRES

WAYNE COUNTY, MISSISSIPPI



DENNIS WEST | MANAGING BROKER
C: 601-248-4396 | dennis@smalltownproperties.com

HUNTER WADLEY | LAND SPECIALIST
C: 601-410-1992 | hunter.wadley@smalltownproperties.com

2121 5th St., Ste 206 - Meridian, MS 39301 | O: 769-760-0005 | smalltownproperties.com *Information is believed to be accurate but not guaranteed.*

16± ACRES

WAYNE COUNTY, MISSISSIPPI



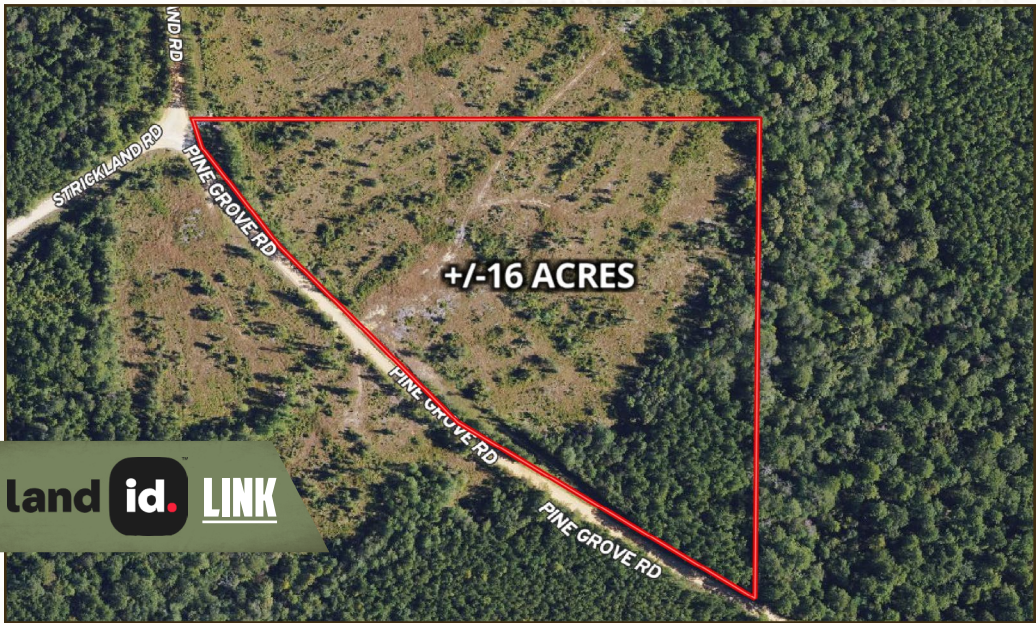
DENNIS WEST | MANAGING BROKER
C: 601-248-4396 | dennis@smalltownproperties.com

HUNTER WADLEY | LAND SPECIALIST
C: 601-410-1992 | hunter.wadley@smalltownproperties.com

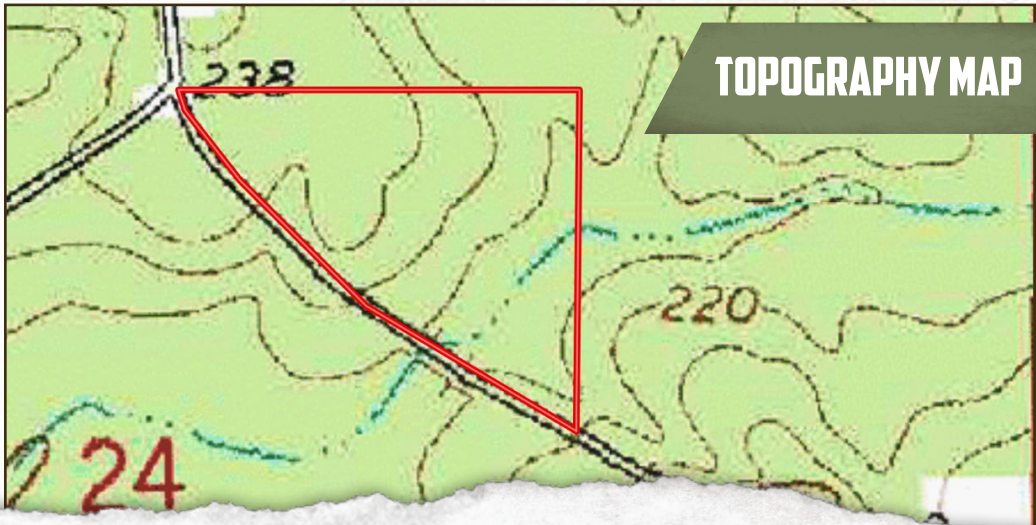
2121 5th St., Ste 206 - Meridian, MS 39301 | O: 769-760-0005 | smalltownproperties.com Information is believed to be accurate but not guaranteed.

16± ACRES

WAYNE COUNTY, MISSISSIPPI



land id. LINK



TOPOGRAPHY MAP



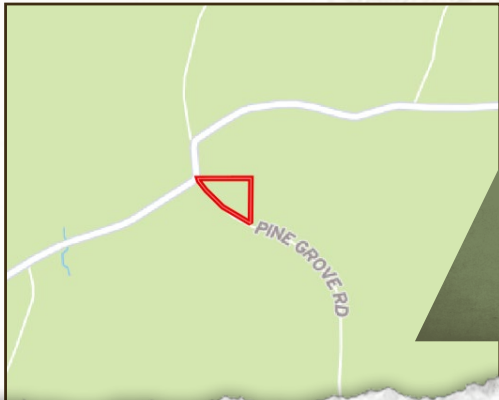
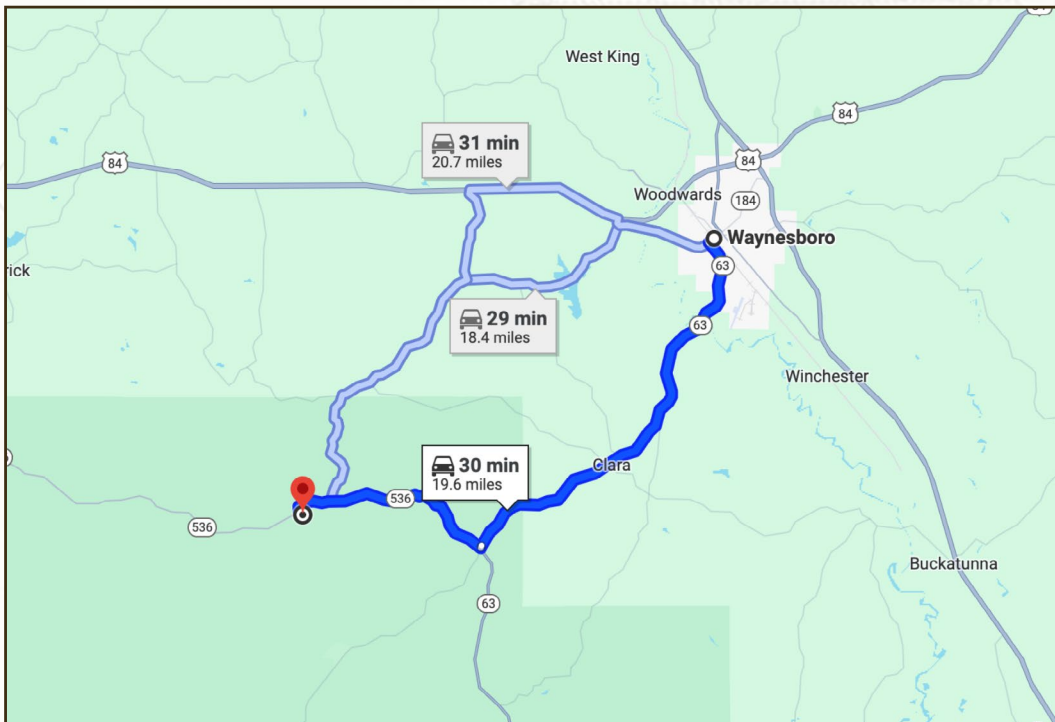
DENNIS WEST | MANAGING BROKER
C: 601-248-4396 | dennis@smalltownproperties.com

HUNTER WADLEY | LAND SPECIALIST
C: 601-410-1992 | hunter.wadley@smalltownproperties.com

2121 5th St., Ste 206 - Meridian, MS 39301 | O: 769-760-0005 | smalltownproperties.com Information is believed to be accurate but not guaranteed.

16± ACRES

WAYNE COUNTY, MISSISSIPPI



Directions from Waynesboro, MS:
Travel South on Hwy 63, and turn right on Strickland Road. Continue for approximately 6.5 miles, and turn left on Pine Grove Road. This property is on the left.

[LINK TO GOOGLE MAP DIRECTIONS](#)



DENNIS WEST | MANAGING BROKER
C: 601-248-4396 | dennis@smalltownproperties.com



SMALLTOWN
HUNTING PROPERTIES
& REAL ESTATESM



HUNTER WADLEY | LAND SPECIALIST
C: 601-410-1992 | hunter.wadley@smalltownproperties.com