

# 19+/- Acre Recreational Tract in Leake County, Ms



**\$47,500**

Are you searching for an ideal location for an off-the-grid cabin or a small piece of recreational land in Leake County? Surrounded by larger timberland tracts, this 19+/- acre property was planted with pines 12 years ago, providing plenty of cover for wildlife. Abundant game roams freely throughout. While utilities are unavailable on-site, take advantage of the opportunity to schedule a tour with Tyler Kilgore today!



**TYLER  
KILGORE**  
REALTOR®

Office: 662.268.6333

Cell: 601.562.0688

Tyler@TomSmithLand.com



**A Real Estate Expert You Can Trust**

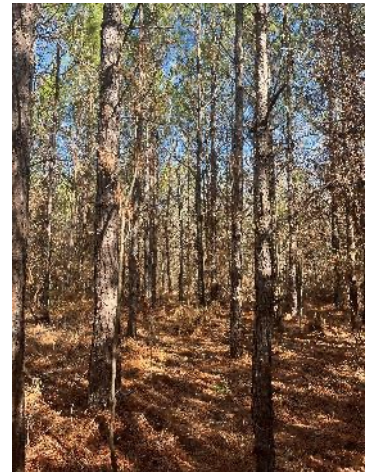
TomSmithLandandHomes.com

Information is believed to be accurate but not guaranteed.





**STEALTH CAM** 12:51:09AM 02/21/2024 44°F ● LEAKE SOUTH



**TYLER KILGORE**  
REALTOR®

Office: 662.268.6333

Cell: 601.562.0688

Tyler@TomSmithLand.com



**A Real Estate Expert You Can Trust**

TomSmithLandandHomes.com

Information is believed to be accurate but not guaranteed.





**TYLER KILGORE**  
REALTOR®

Office: 662.268.6333

Cell: 601.562.0688

Tyler@TomSmithLand.com

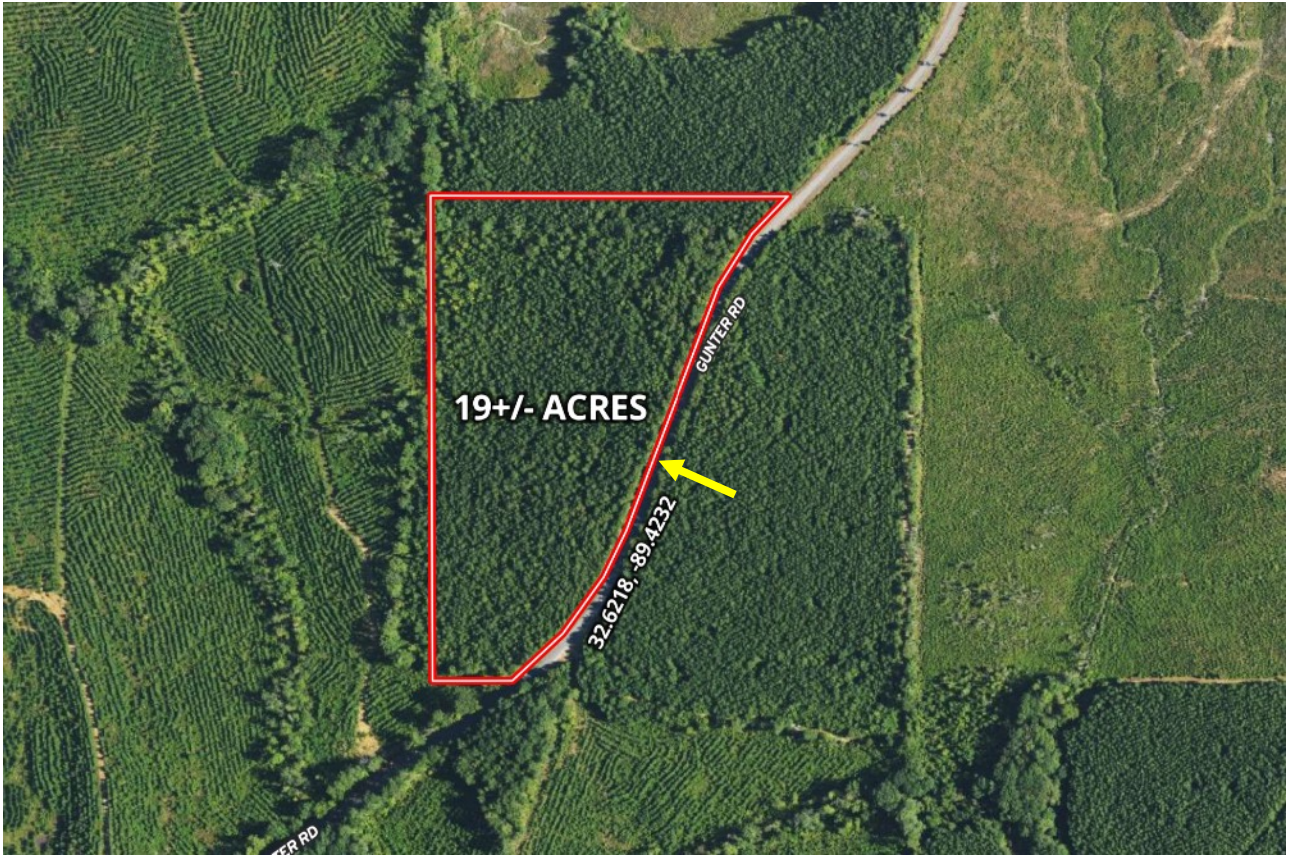


**A Real Estate Expert You Can Trust**  
TomSmithLandandHomes.com

Information is believed to be accurate but not guaranteed.



# AERIAL MAP



[Interactive Map Link](#)

**TYLER KILGORE**  
REALTOR®

Office: 662.268.6333

Cell: 601.562.0688

Tyler@TomSmithLand.com



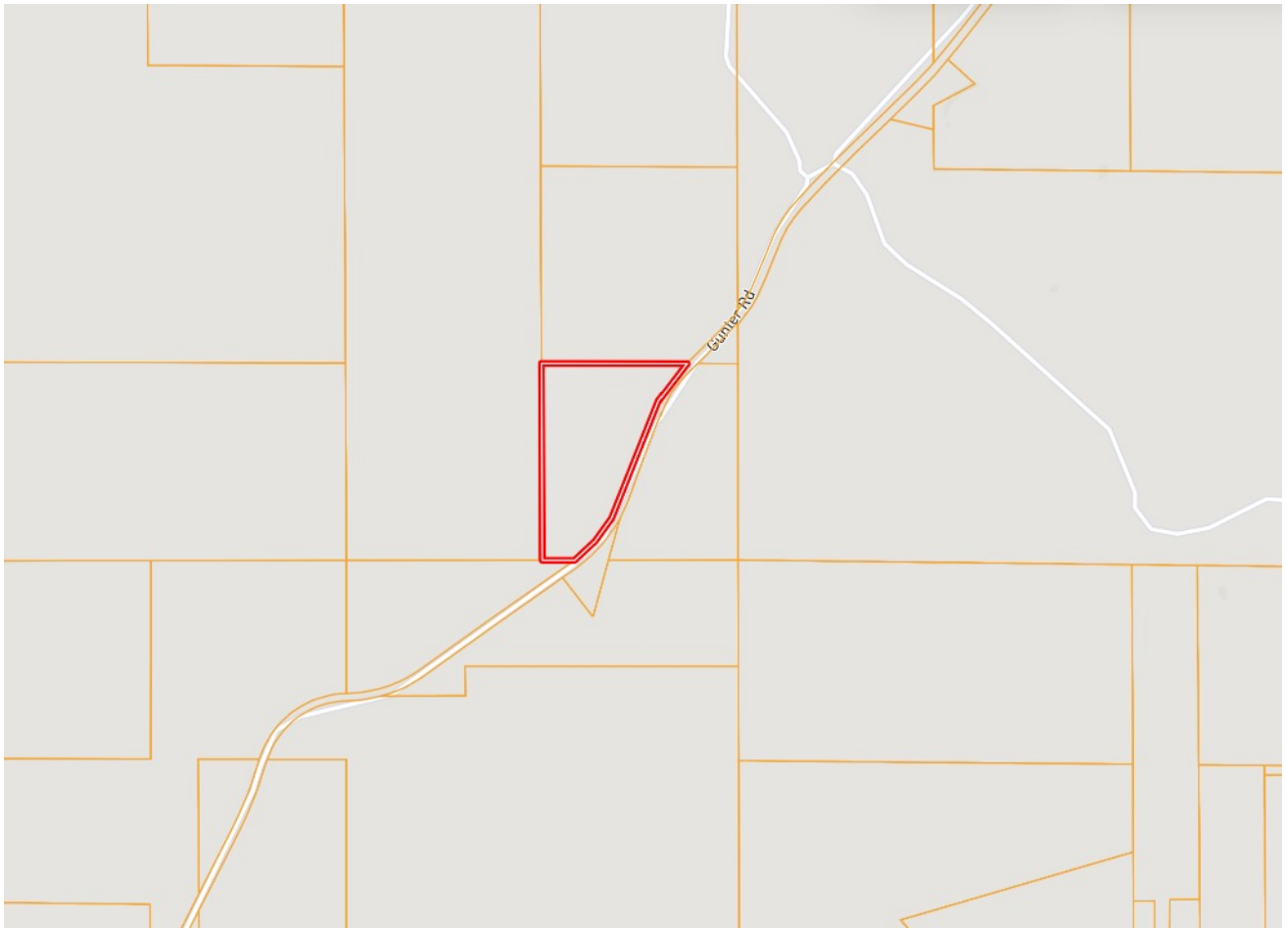
A Real Estate Expert You Can Trust

TomSmithLandandHomes.com

Information is believed to be accurate but not guaranteed.

2011-2023  
BEST  
BROKERAGES

# OWNERSHIP MAP



**TYLER KILGORE**  
REALTOR®

Office: 662.268.6333

Cell: 601.562.0688

Tyler@TomSmithLand.com



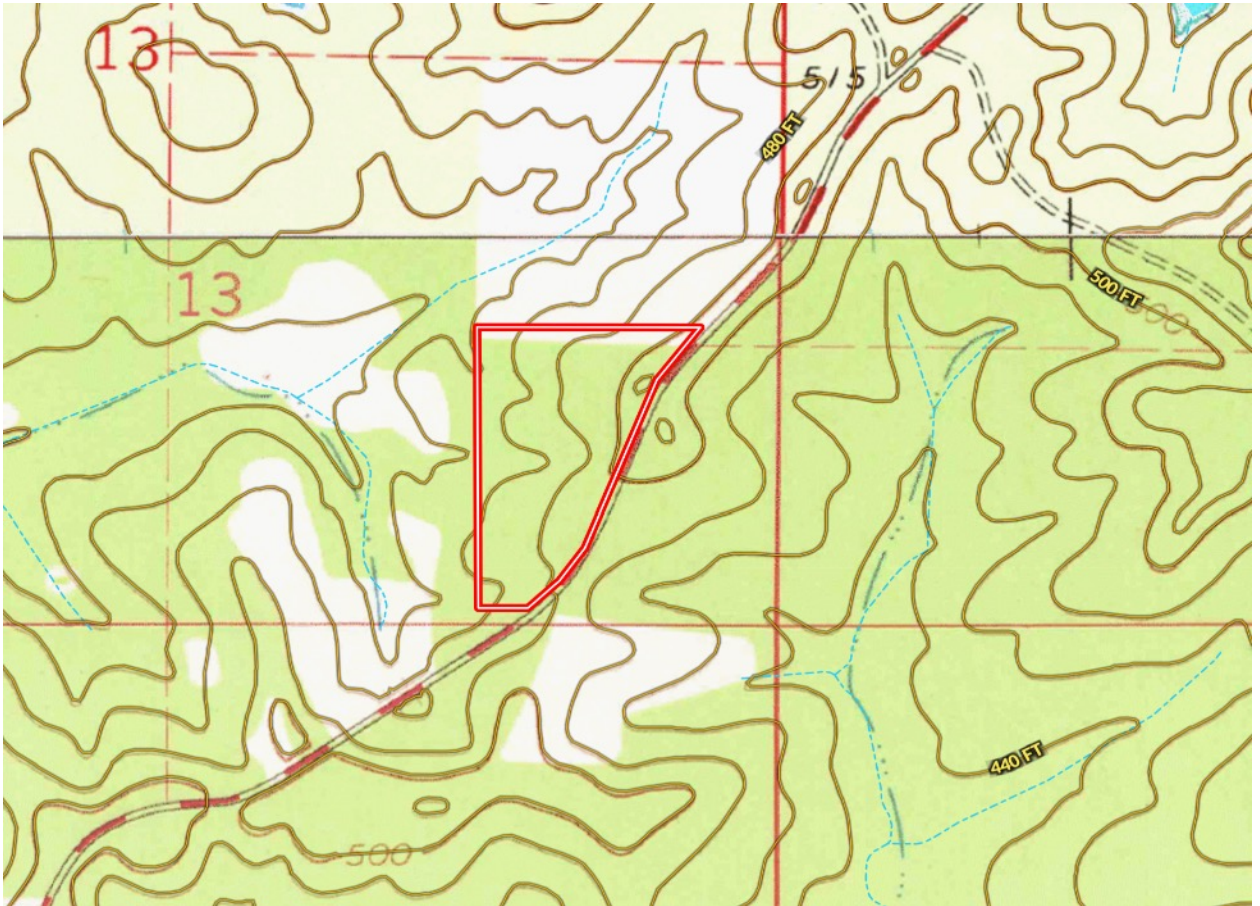
**A Real Estate Expert You Can Trust**

TomSmithLandandHomes.com

Information is believed to be accurate but not guaranteed.

2011-2023  
BEST  
BROKERAGES

# TOPO MAP



**TYLER KILGORE**  
REALTOR®

Office: 662.268.6333

Cell: 601.562.0688

Tyler@TomSmithLand.com



**A Real Estate Expert You Can Trust**

TomSmithLandandHomes.com

Information is believed to be accurate but not guaranteed.

2011-2023  
BEST  
BROKERAGES

# SOIL MAP



SOIL CODE	SOIL DESCRIPTION	ACRES	%	CPI	NCCPI	CAP
SWD2	Sweatman fine sandy loam, 5 to 15 percent slopes, moderately eroded	13.69	73.17	0	56	7e
OrC	Ora fine sandy loam, 5 to 8 percent slopes, eroded	5.01	26.78	0	39	3e

**TYLER KILGORE**  
REALTOR®

Office: 662.268.6333

Cell: 601.562.0688

Tyler@TomSmithLand.com



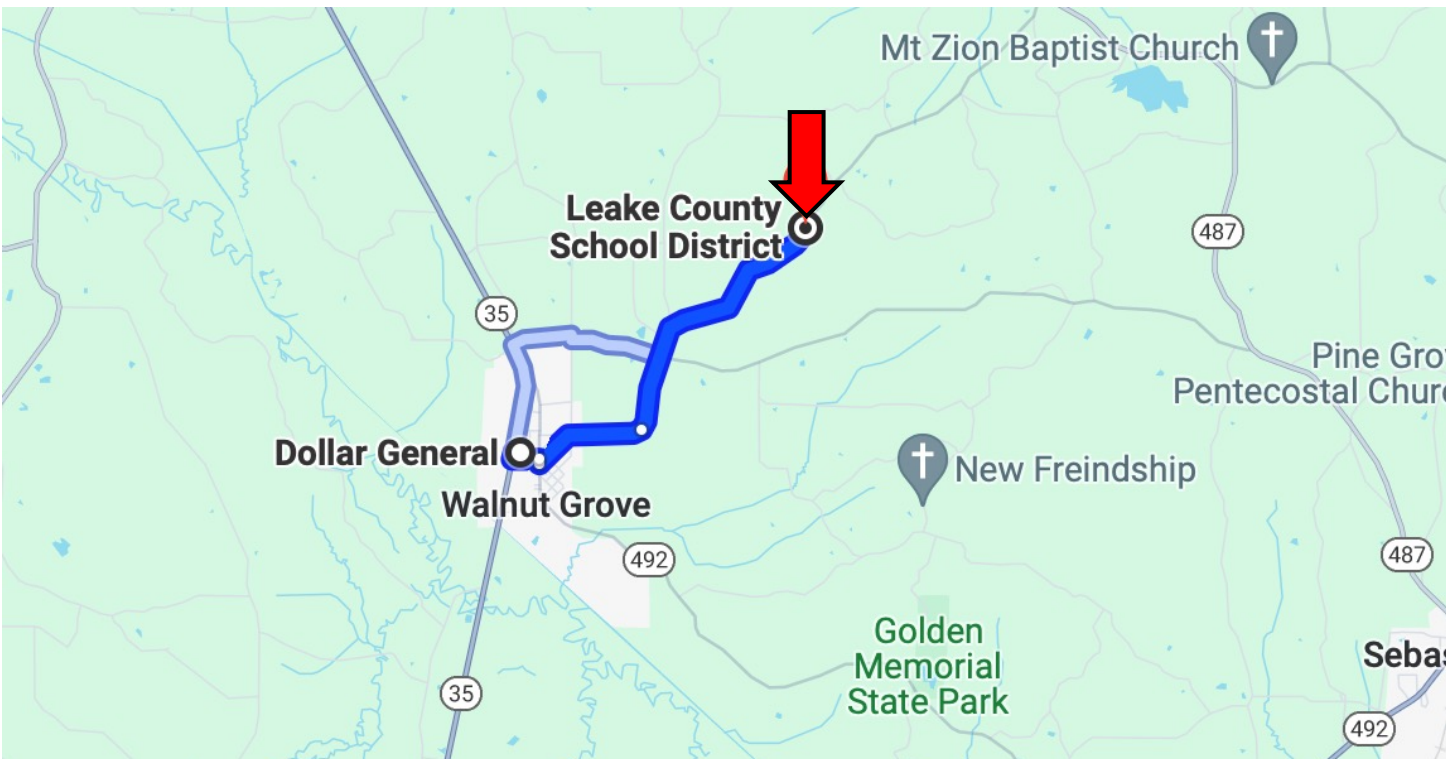
**A Real Estate Expert You Can Trust**

TomSmithLandandHomes.com

Information is believed to be accurate but not guaranteed.



# DIRECTIONAL MAP



Directions from Hwy 35 in Walnut Grove, MS: Turn right onto Sylvanus Street, which becomes Main Street. Travel .4 miles, then make a slight right onto Spruce Street. Travel .9 miles, then continue onto Gunter Road. Travel 2.3 miles, and the property will be on the left. [GOOGLE MAP LINK](#)



TYLER  
**KILGORE**  
REALTOR®

Office: 662.268.6333

Cell: 601.562.0688

Tyler@TomSmithLand.com



**A Real Estate Expert You Can Trust**

TomSmithLandandHomes.com

Information is believed to be accurate but not guaranteed.

