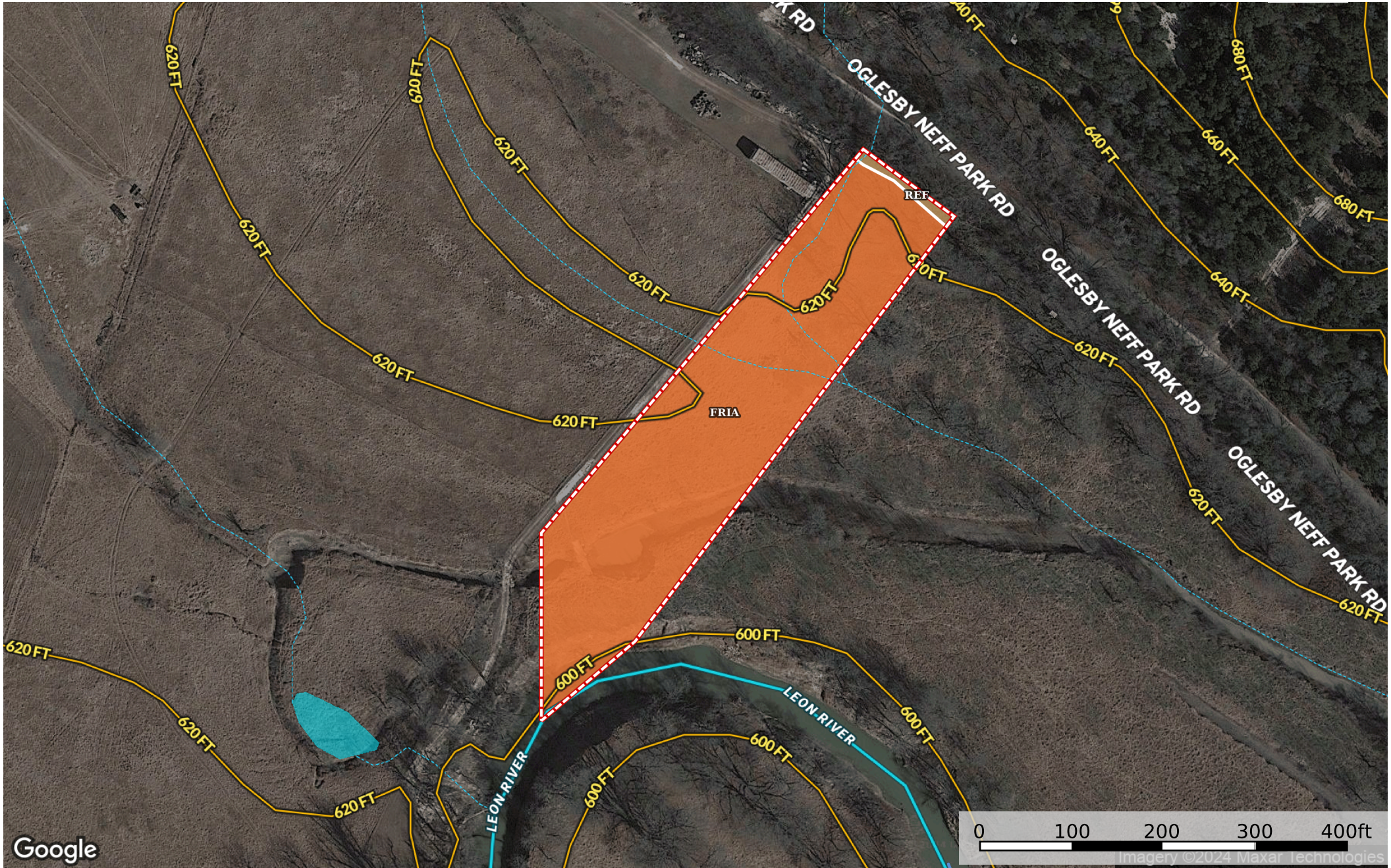


Pressman - Oglesby Neff Park Road
Coryell County, Texas, 2 AC +/-



River / Creek Boundary Stream, Intermittent River/Creek Water Body

Boundary 2.01 ac

SOIL CODE	SOIL DESCRIPTION	ACRES	%	CPI	NCCPI	CAP
FriA	Frio silty clay, 0 to 1 percent slopes, occasionally flooded	1.98	98.51	0	44	3w
ReF	Real-Rock outcrop complex, 8 to 40 percent slopes	0.03	1.49	0	7	7e
TOTALS		2.01(*)	100%	-	43.45	3.06









(*) Total acres may differ in the second decimal compared to the sum of each acreage soil. This is due to a round error because we only show the acres of each soil with two decimal.

Capability Legend

Increased Limitations and Hazards

Decreased Adaptability and Freedom of Choice Users

Land, Capability

								
	1	2	3	4	5	6	7	8
'Wild Life'	•	•	•	•	•	•	•	•
Forestry	•	•	•	•	•	•	•	
Limited	•	•	•	•	•	•	•	
Moderate	•	•	•	•	•	•		
Intense	•	•	•	•	•			
Limited	•	•	•	•				
Moderate	•	•	•					
Intense	•	•						
Very Intense	•							

Grazing Cultivation

(c) climatic limitations (e) susceptibility to erosion

(s) soil limitations within the rooting zone (w) excess of water