

Recreational Property

72+/- Acres in Pearl River County MS



If you are looking for an exceptional recreational property in Pearl River County, MS then check out this 72+/- surveyed acre tract located just ten miles north of the Crossroads community. The pine tract is accessed by easement and offers fantastic hunting and recreational opportunities. The internal road system allows access to the entire property with multiple food plots already in place. Just add your feeder and box blind and you are ready for deer season. The ten-year-old pine can be thinned in the coming years to improve stand quality as well as increase forage and bedding for wildlife.

Directions from the intersection of MS-26 and MS-43 in Poplarville, MS: Travel north on MS-43 for 10 miles. The entrance to the property will be on the right. Follow the easement for approximately .5 miles.



**CLIF
CANNON**
MANAGING BROKER
Office: 601.990.5070
Cell: 601.565.1070
Clif@TomSmithLand.com



A Real Estate Expert You Can Trust
TomSmithLandandHomes.com

Information is believed to be accurate but not guaranteed.





A Real Estate Expert *You Can Trust!*

CLIF CANNON

MANAGING BROKER

O: 601.990.5070 C: 601.565.1070

Clif@TomSmithLand.com

TomSmithLandandHomes.com



Expect More. Get More.

Information is believed to be accurate but not guaranteed.





A Real Estate Expert *You Can Trust!*

CLIF CANNON

MANAGING BROKER

O: 601.990.5070 C: 601.565.1070

Clif@TomSmithLand.com

TomSmithLandandHomes.com



Expect More. Get More.



Information is believed to be accurate but not guaranteed.

Aerial Map



Interactive Map

A Real Estate Expert
You Can Trust!

CLIF CANNON

MANAGING BROKER

O: 601.990.5070 C: 601.565.1070

Clif@TomSmithLand.com

TomSmithLandandHomes.com

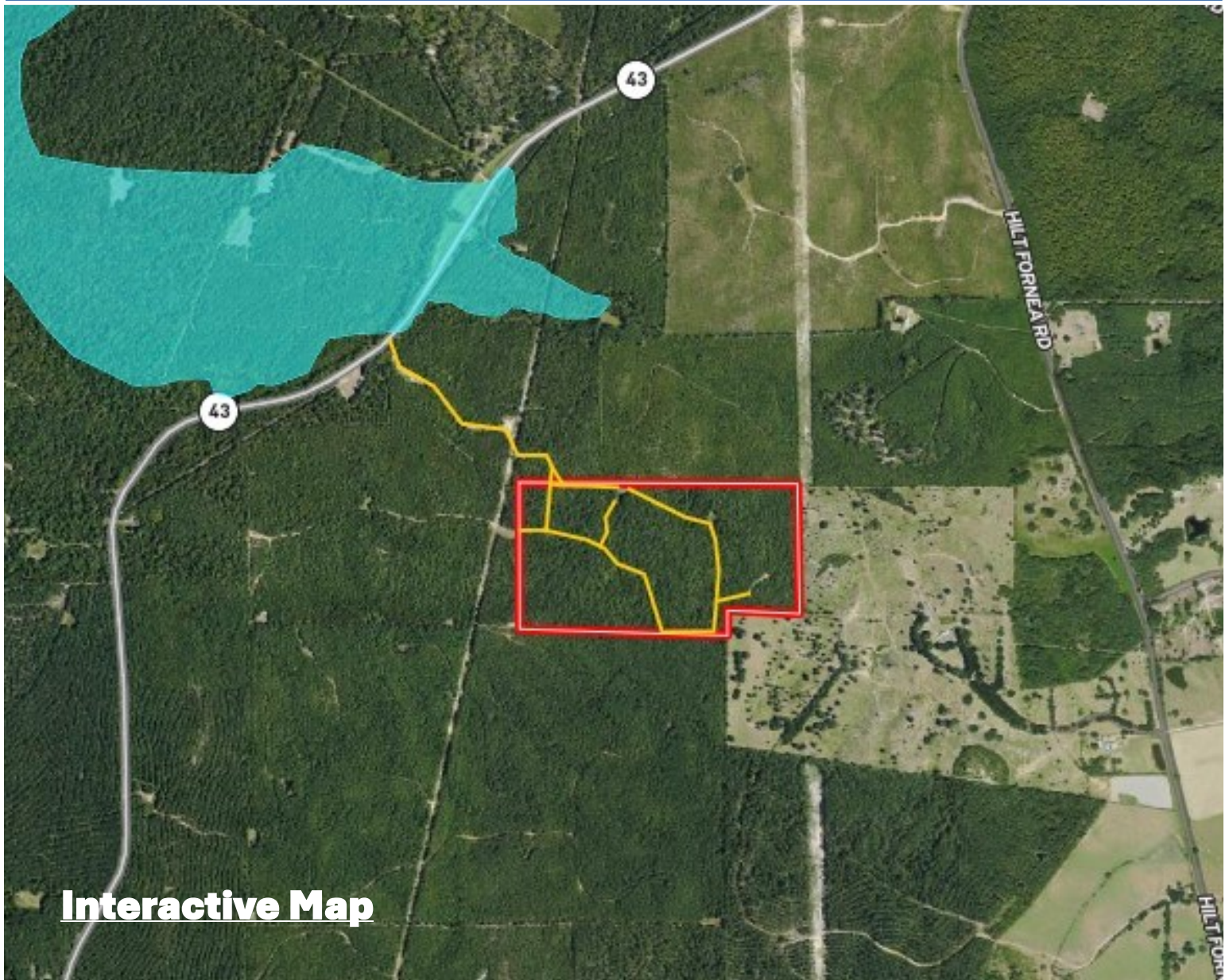


Expect More. Get More.

Information is believed to be accurate but not guaranteed.



Flood Map



Interactive Map

A Real Estate Expert
You Can Trust!

CLIF CANNON

MANAGING BROKER

O: 601.990.5070 C: 601.565.1070

Clif@TomSmithLand.com

TomSmithLandandHomes.com

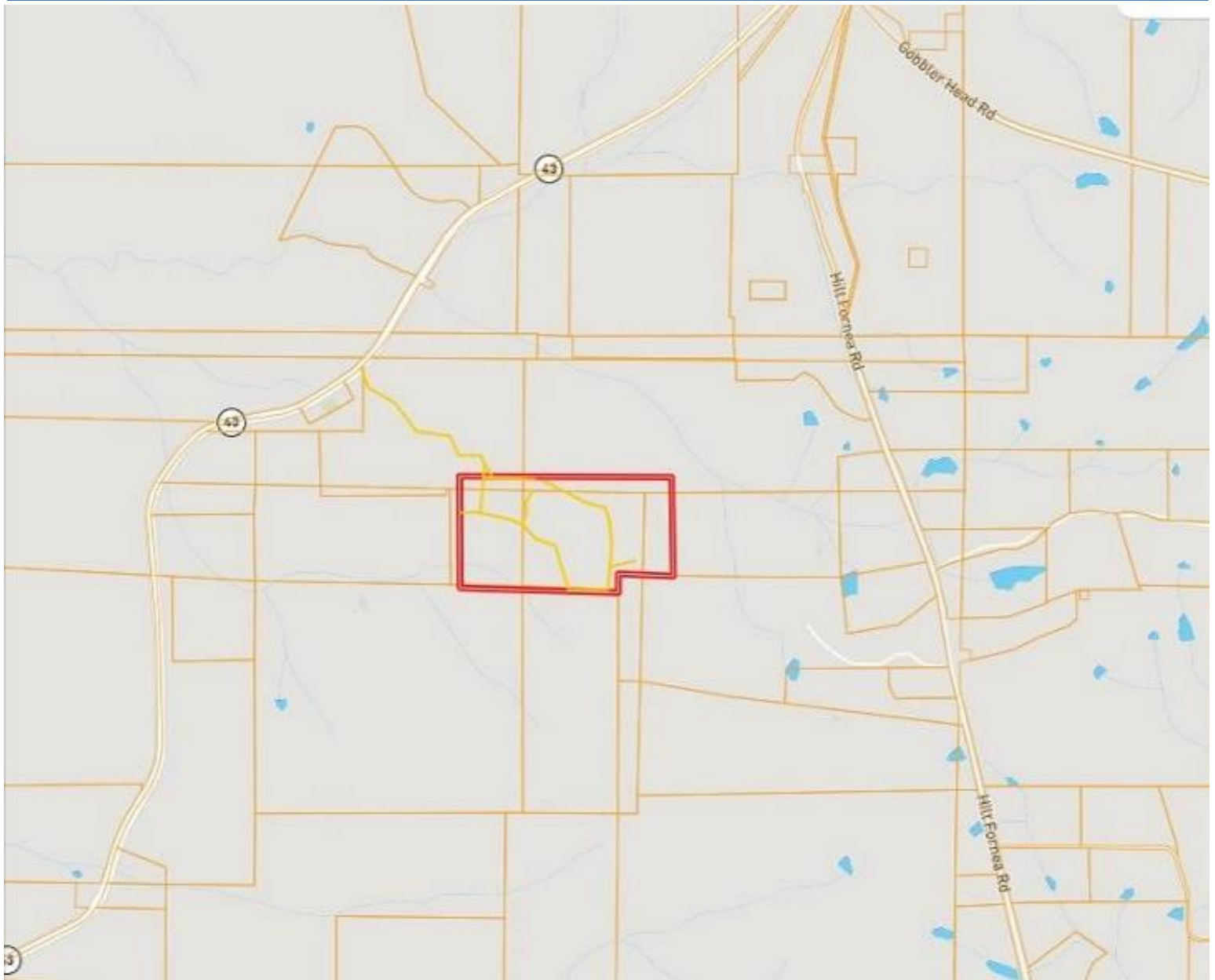


Expect More. Get More.



Information is believed to be accurate but not guaranteed.

Ownership Map



A Real Estate Expert
You Can Trust!

CLIF CANNON

MANAGING BROKER

O: 601.990.5070 C: 601.565.1070

Clif@TomSmithLand.com

TomSmithLandandHomes.com

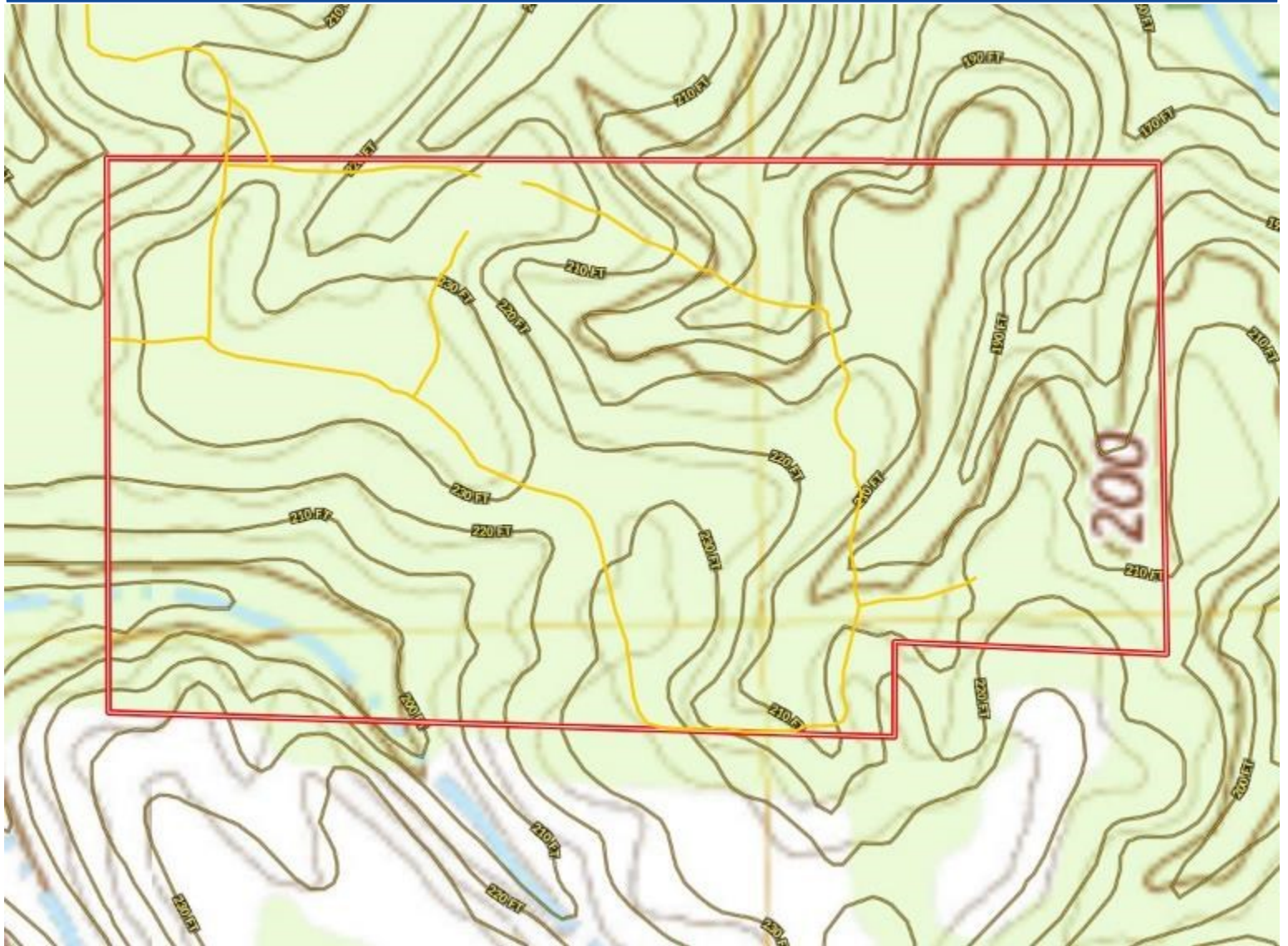


Expect More. Get More.



Information is believed to be accurate but not guaranteed.

Topographic Map



A Real Estate Expert
You Can Trust!

CLIF CANNON

MANAGING BROKER

O: 601.990.5070 C: 601.565.1070

Clif@TomSmithLand.com

TomSmithLandandHomes.com

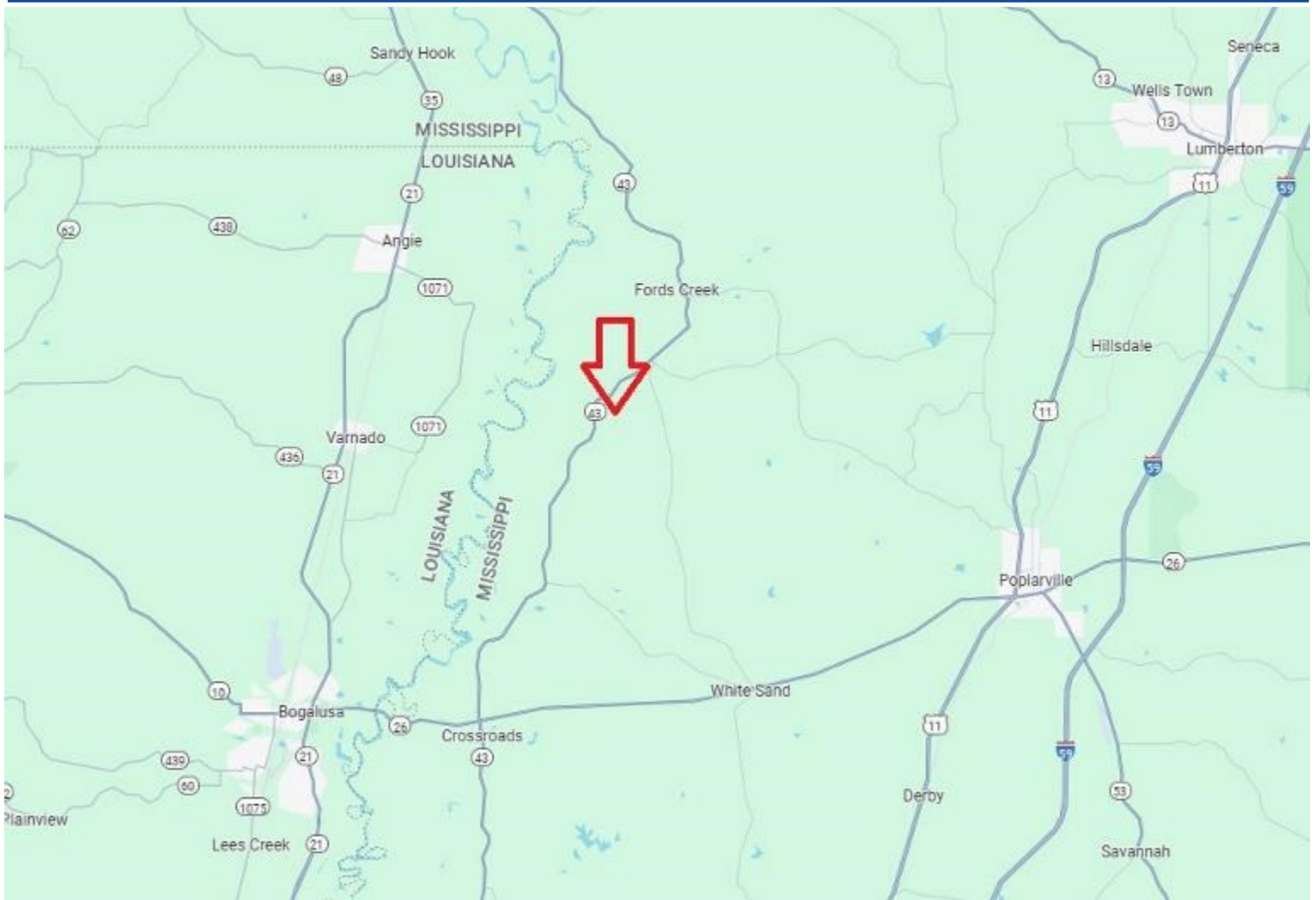


Expect More. Get More.

Information is believed to be accurate but not guaranteed.



Directional Map



Directions from the intersection of MS-26 and MS-43 in Poplarville, MS: Travel north on MS-43 for 10 miles. The entrance to the property will be on the right. Follow the easement for approximately .5 miles. [GOOGLE MAP LINK](#)



**CLIF
CANNON**
MANAGING BROKER
Office: 601.990.5070
Cell: 601.565.1070
Clif@TomSmithLand.com



Expect More. Get More.

A Real Estate Expert You Can Trust

TomSmithLandandHomes.com

Information is believed to be accurate but not guaranteed.

