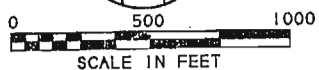


Exhibit A

TWIN RIVER

A SUBDIVISION OF IDAHO COUNTY, ID
LOCATED IN SECTIONS 7, 8, 9, 16, 17, 18, 19, 20 &
BOISE MERIDIAN

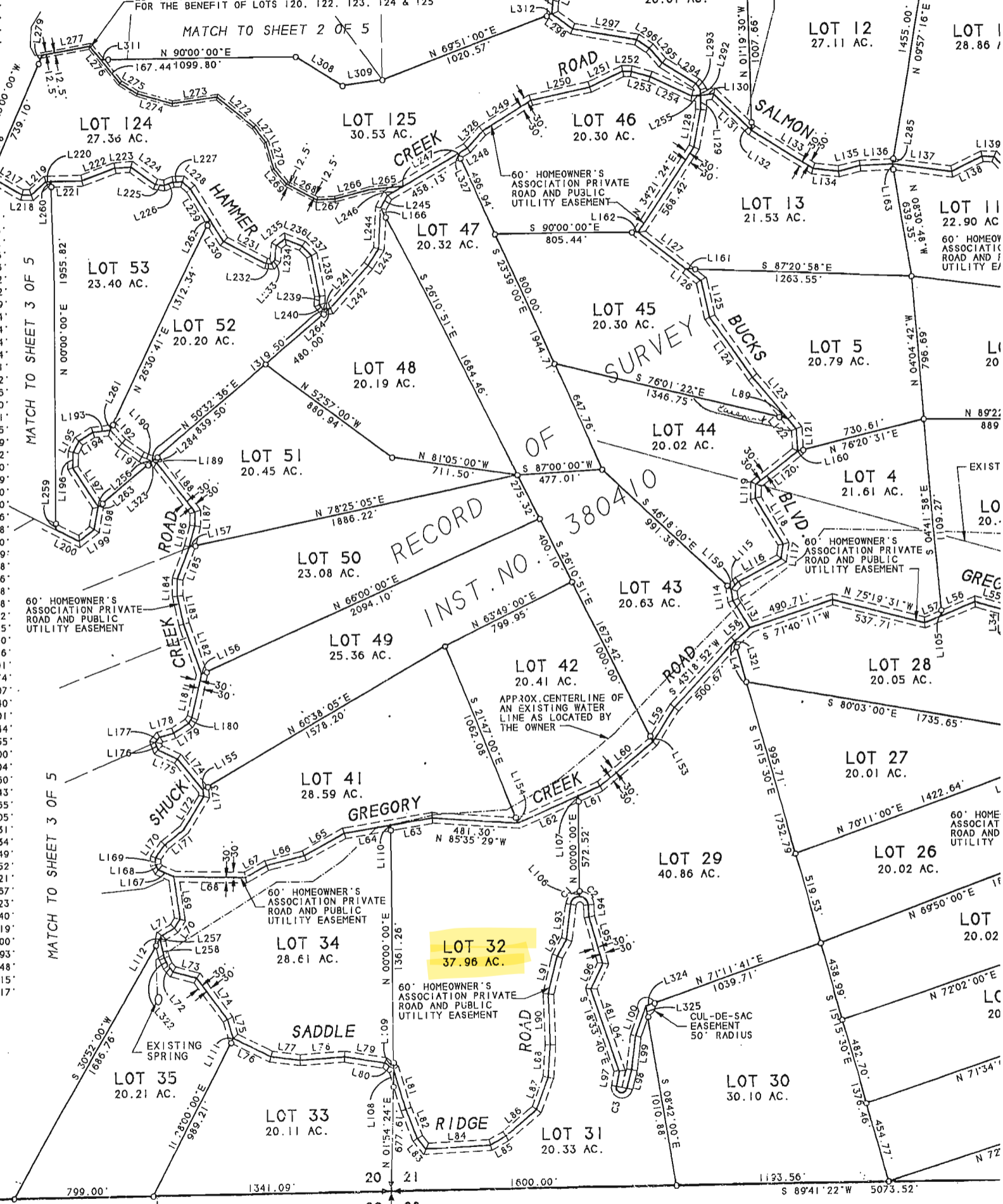
PLAT OF



CURVE	DELTA ANGLE	RADIUS	ARC	TANGENT	CHORD	CHORD BEARING
C 1	82°24'04"	50.00'	71.91'	43.77'	65.87'	N 48°47'58"E
C 2	86°36'54"	50.00'	75.59'	47.13'	68.59'	S 46°41'33"E
C 3	176°02'47"	30.00'	92.18'	869.16'	59.96'	S 76°31'36"E
C 4	184°30'00"	50.00'	161.01'			
C 5	115°15'35"	50.00'	100.58'	78.88'	84.46'	N 57°03'52"E
C 6	50°14'30"	50.00'	43.84'	23.44'	42.45'	S 40°11'05"E

25' PRIVATE ACCESS & PUBLIC UTILITY EASEMENT FOR THE BENEFIT OF LOTS 120, 122, 123, 124 & 125

MATCH TO SHEET 2 OF 5



5314.53' 799.00' 1341.09' 20 21 1600.00' 29 28 SEC. COR. FOUND 1.0 VERNE E. WRIGHT, ETAL

