



80.5± ACRE DEVELOPMENT OPPORTUNITY MADISON COUNTY, MS

\$1,060,000

This 80.5+/- acre development tract is located only 1.5 miles from The Renaissance, The Natchez Trace, and only ¼ mile from Bridgewater Subdivision! The Madison County, MS property is situated in the City of Ridgeland and fronts Greens Crossing Road and is ready for development or the family wanting a lifetime paradise. There is a conceptual site plan already prepared for the property. The entire site is also permitted as a dirt pit, which is a RARE find if you are interested in an income-producing property! Priced well below market value, this property will not last long. Call Tom Smith TODAY!



*Call the
land man
today!*

TOM SMITH, ALC®, BROKER
Tom@TomSmithLand.com
601.898.2772 **office** | 601.454.9397 **cell**



TomSmithLandandHomes.com

Information is believed to be accurate but not guaranteed.



Lake Crossing

This master plan has been prepared for the purpose of illustrating the general concept of the development. The Developer reserves the right to alter or revise the uses and locations illustrated on this plan without notice. All measurements and acreages shown are approximate.



DEVELOPERS... IF YOU ARE LOOKING FOR A TURN-KEY, READY FOR MARKET PROPERTY, LOOK NO FURTHER THAN THIS 80.5± ACRE TRACT IN MADISON COUNTY, MS. NOW IS YOUR CHANCE TO CREATE A WONDERFUL HOMEPLACE FOR SOMEONE!

Call the land man today!

TOM SMITH, ALC®, BROKER

Tom@TomSmithLand.com

601.898.2772 **office** | 601.454.9397 **cell**



Expect More. Get More.



TomSmithLandandHomes.com

Information is believed to be accurate but not guaranteed.



*Call the
land man
today!*

TOM SMITH, ALC®, BROKER

Tom@TomSmithLand.com

601.898.2772 **office** | 601.454.9397 **cell**

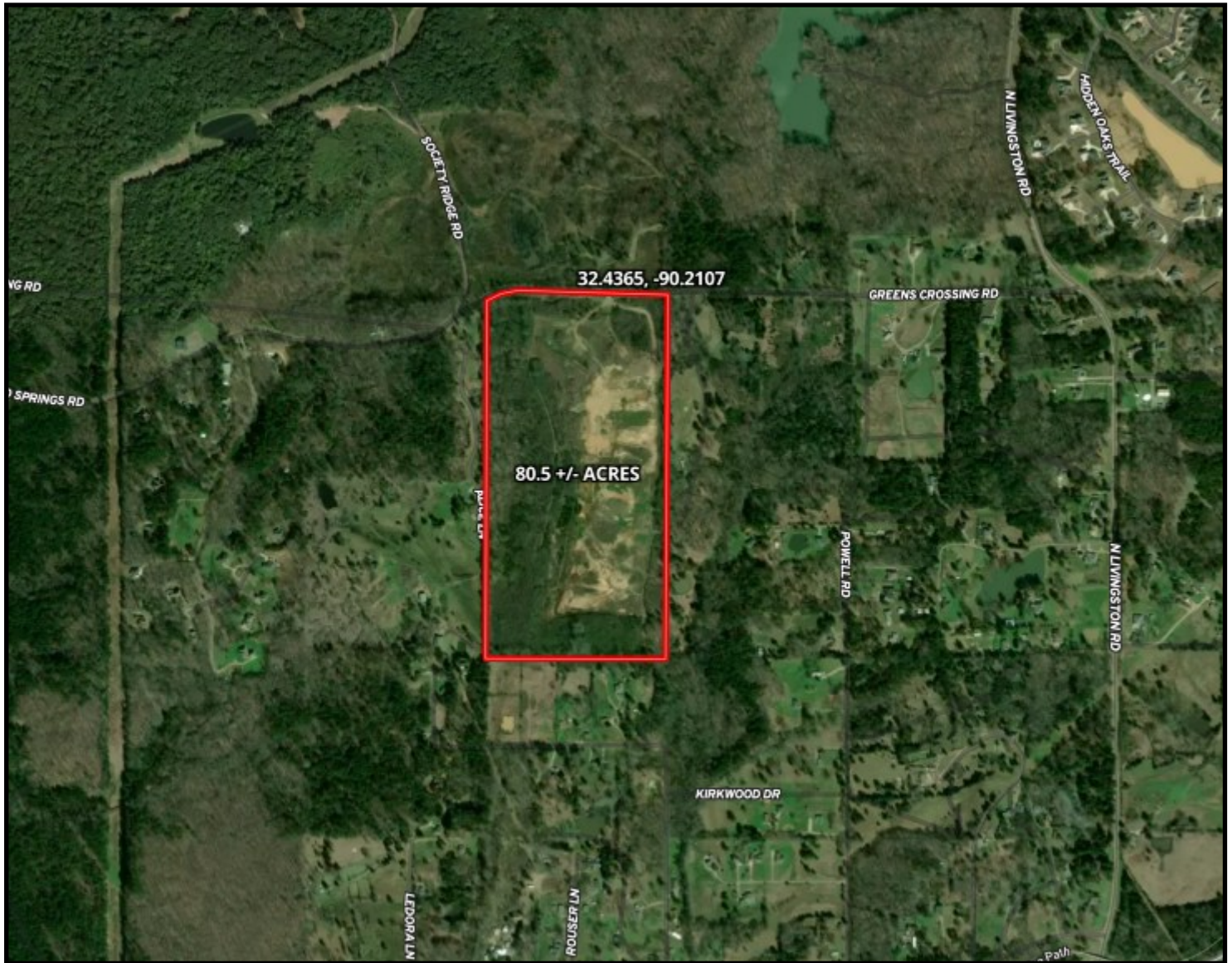


Expect More. Get More.

TomSmithLandandHomes.com

Information is believed to be accurate but not guaranteed.

Aerial Map



CLICK HERE FOR INTERACTIVE MAP

*Call the
land man
today!*

TOM SMITH, ALC®, BROKER

Tom@TomSmithLand.com

601.898.2772 **office** | 601.454.9397 **cell**

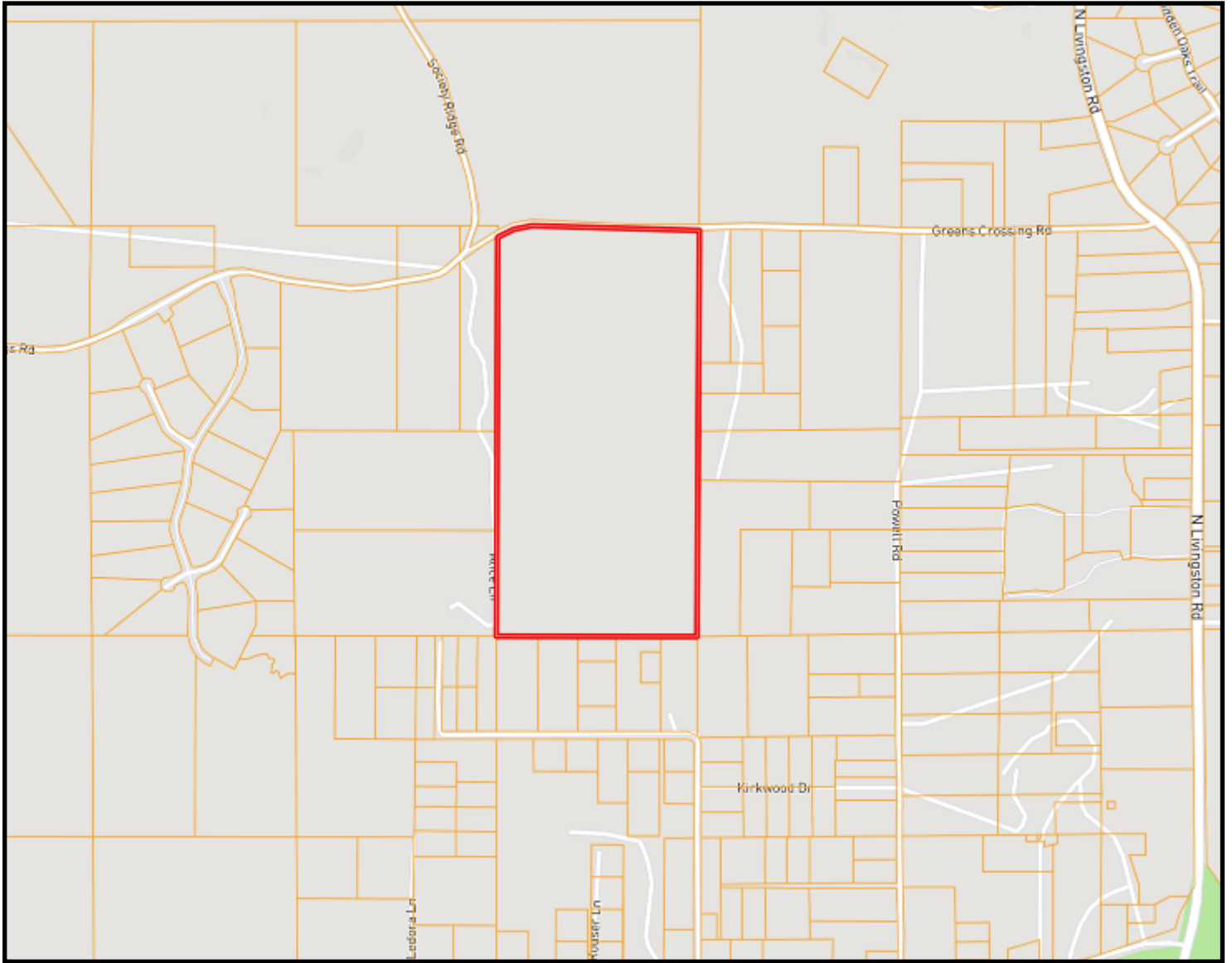


Expect More. Get More.

TomSmithLandandHomes.com

Information is believed to be accurate but not guaranteed.

Ownership Map



*Call the
land man
today!*

TOM SMITH, ALC®, BROKER

Tom@TomSmithLand.com

601.898.2772 **office** | 601.454.9397 **cell**

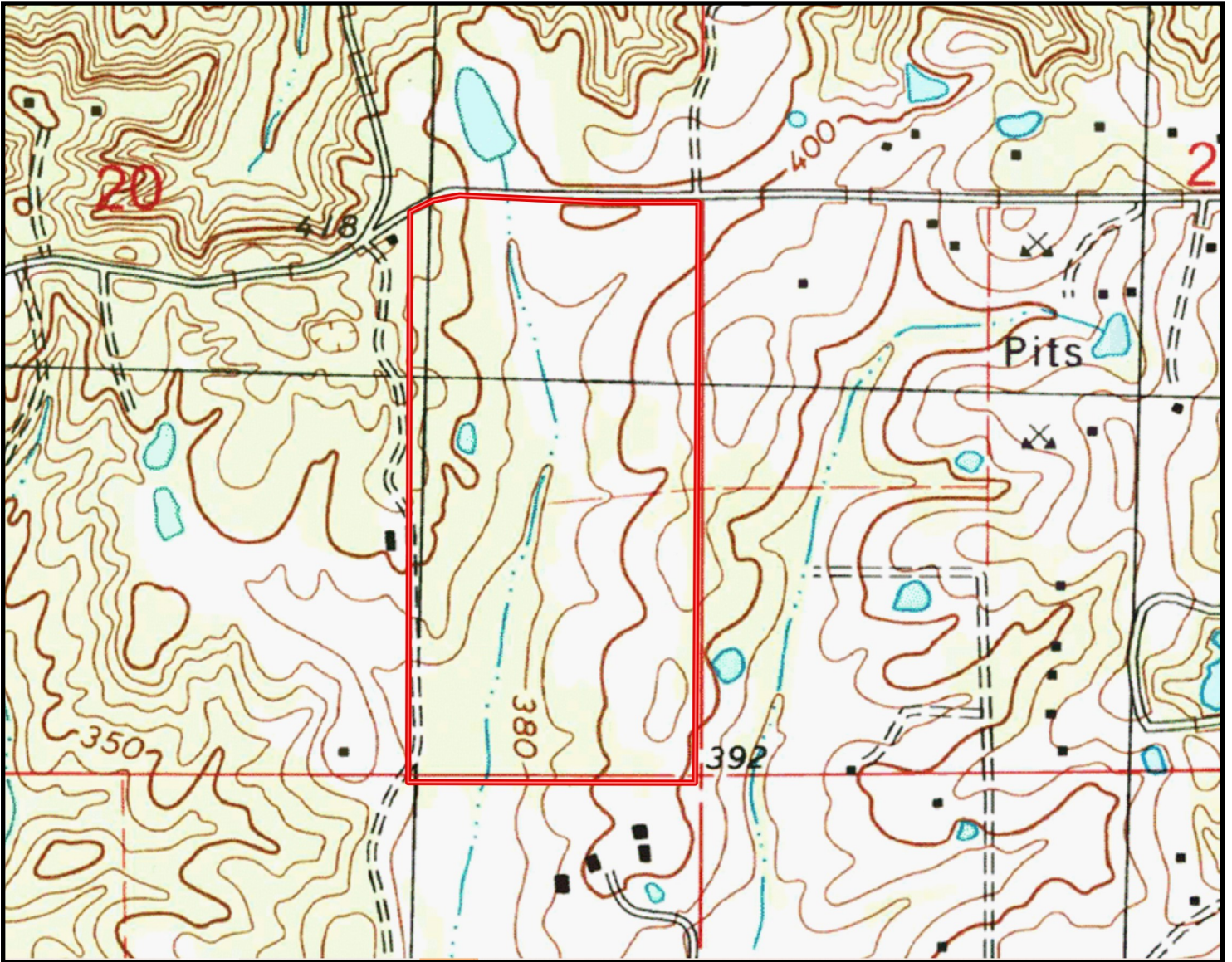


Expect More. Get More.

TomSmithLandandHomes.com

Information is believed to be accurate but not guaranteed.

Topo Map



*Call the
land man
today!*

TOM SMITH, ALC®, BROKER

Tom@TomSmithLand.com

601.898.2772 **office** | 601.454.9397 **cell**

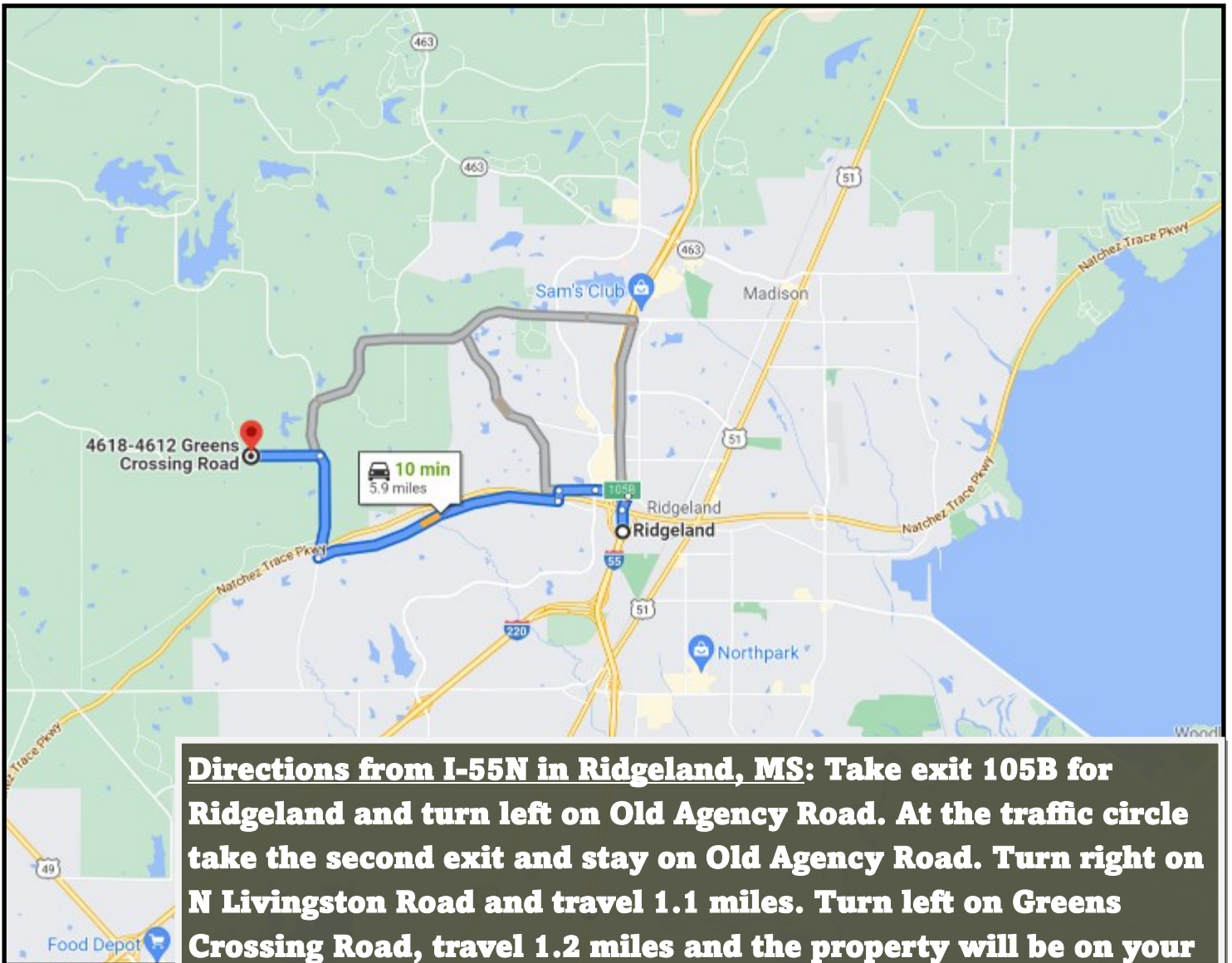


Expect More. Get More.

TomSmithLandandHomes.com

Information is believed to be accurate but not guaranteed.

Directional Map



Directions from I-55N in Ridgeland, MS: Take exit 105B for Ridgeland and turn left on Old Agency Road. At the traffic circle take the second exit and stay on Old Agency Road. Turn right on N Livingston Road and travel 1.1 miles. Turn left on Greens Crossing Road, travel 1.2 miles and the property will be on your left. [GOOGLE MAP LINK](#)



Call the land man today!

TOM SMITH, ALC®, BROKER
Tom@TomSmithLand.com
601.898.2772 **office** | 601.454.9397 **cell**



TomSmithLandandHomes.com

Information is believed to be accurate but not guaranteed.