

223+/- Acre Improved Hunting/Recreational Tract In Holmes County, MS



\$2,450/Acre



Welcome to your dream hunting and recreational property, an extraordinary 223+/- acre retreat in Holmes County, MS. Located at the end of Willow Flat Rd, a 2+/- mile dirt road, this property offers a secluded setting within a sprawling landscape of natural beauty and abundant wildlife. This property features newly improved food plots and roads, ensuring your hunting and recreational experiences are elevated to new heights. Whether you are an avid hunter or outdoor enthusiast, take advantage of the ten improved food plots ready for planting or the two small ponds on the property. This property offers 3+/- miles of improved roads, an atv bridge, and a ford crossing behind the entrance, making access easy. Most of the property is mixed Hardwood/Pine timber, with some areas featuring planted pine. This hunting and recreational property is a true gem with its expansive acreage, natural wonders, and diverse recreational opportunities. Whether you seek an escape from the pressures of everyday life or a thrilling hunting adventure, this property offers a rare chance to own a slice of paradise. Take advantage of the chance to make this exceptional property your own! Call Tom today!

Directions from the intersection of MS-17 N & I-55S in Pickens, MS: Travel north on MS-17 N for 3.5 miles. Turn left on Willow Flat Rd and travel 2 miles. The property is at the end of Willow Flat Rd and marked with signs.



TOM SMITH
ALC®, BROKER

Office: 601.898.2772

Cell: 601.454.9397

Tom@TomSmithLand.com



Call The Land Man Today!

TomSmithLandandHomes.com

Information is believed to be accurate but not guaranteed.





TOM SMITH

ALC®, BROKER

Office: 601.898.2772

Cell: 601.454.9397

Tom@TomSmithLand.com



Call The Land Man Today!

TomSmithLandandHomes.com

Information is believed to be accurate but not guaranteed.





TOM SMITH

ALC®, BROKER

Office: 601.898.2772

Cell: 601.454.9397

Tom@TomSmithLand.com

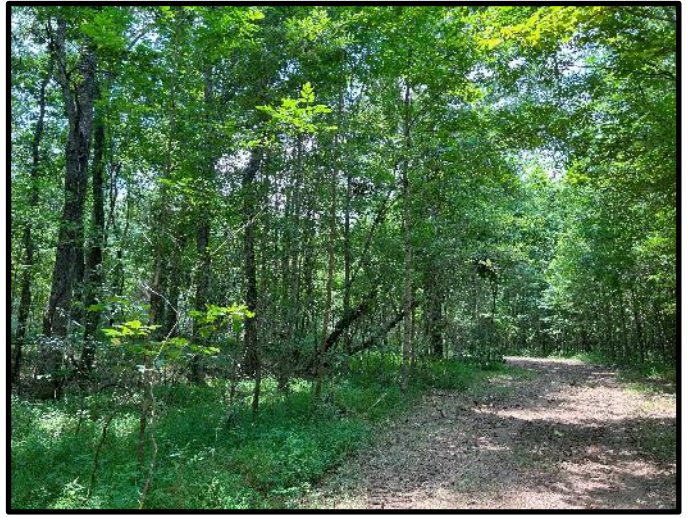


Call The Land Man Today!

TomSmithLandandHomes.com

Information is believed to be accurate but not guaranteed.





TOM SMITH

ALC®, BROKER

Office: 601.898.2772

Cell: 601.454.9397

Tom@TomSmithLand.com



Call The Land Man Today!

TomSmithLandandHomes.com

Information is believed to be accurate but not guaranteed.





TOM SMITH

ALC®, BROKER

Office: 601.898.2772

Cell: 601.454.9397

Tom@TomSmithLand.com



Call The Land Man Today!

TomSmithLandandHomes.com

Information is believed to be accurate but not guaranteed.





TOM SMITH

ALC®, BROKER

Office: 601.898.2772

Cell: 601.454.9397

Tom@TomSmithLand.com



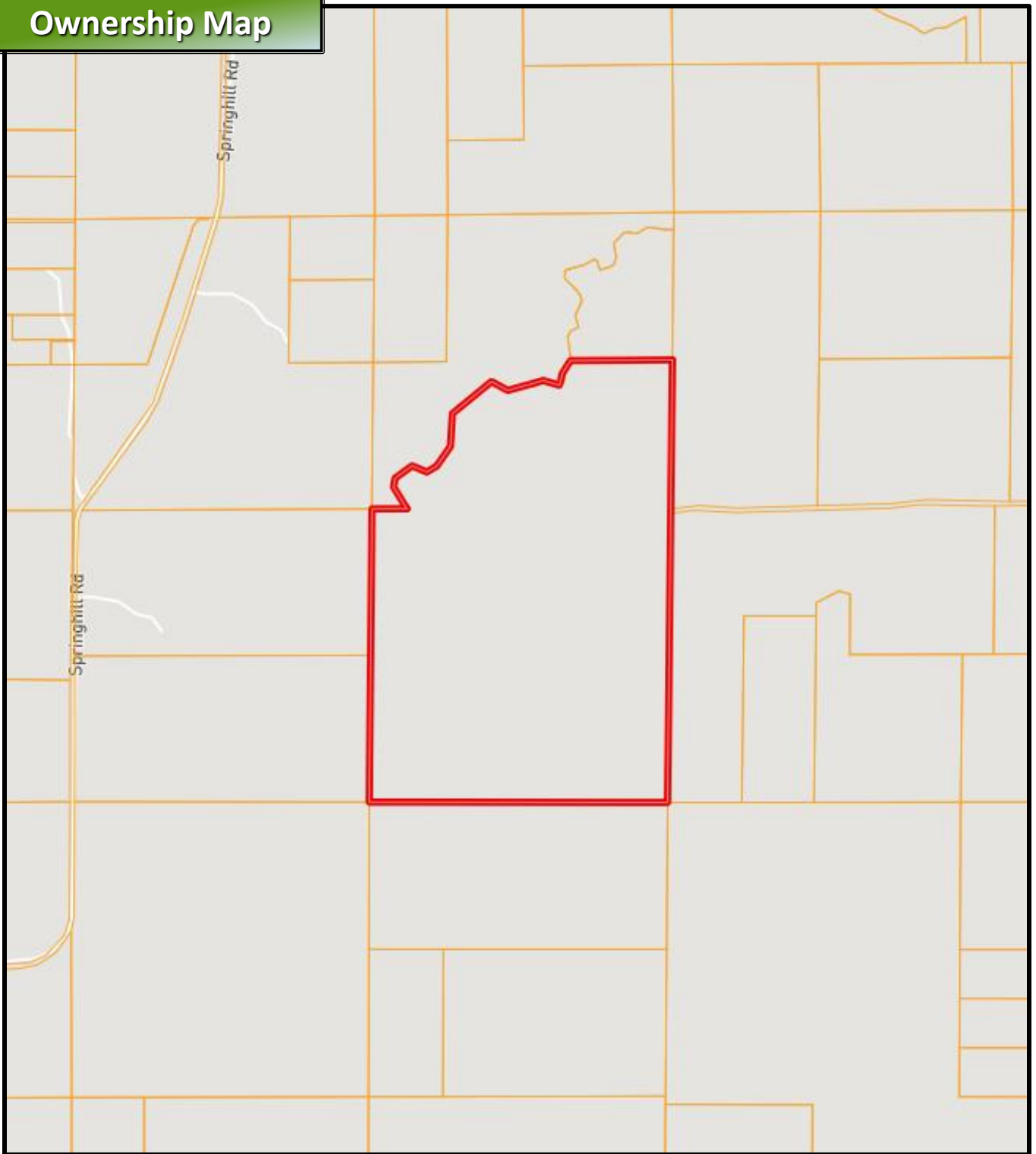
Call The Land Man Today!

TomSmithLandandHomes.com

Information is believed to be accurate but not guaranteed.



Ownership Map



TOM SMITH

ALC®, BROKER

Office: 601.898.2772

Cell: 601.454.9397

Tom@TomSmithLand.com



Call The Land Man Today!

TomSmithLandandHomes.com

Information is believed to be accurate but not guaranteed.



Aerial Map



WILLOW FLAT RD

32.9888, -90.0194

223 +/- Acres

[Click for Interactive Map](#)

TOM SMITH

ALC®, BROKER

Office: 601.898.2772

Cell: 601.454.9397

Tom@TomSmithLand.com



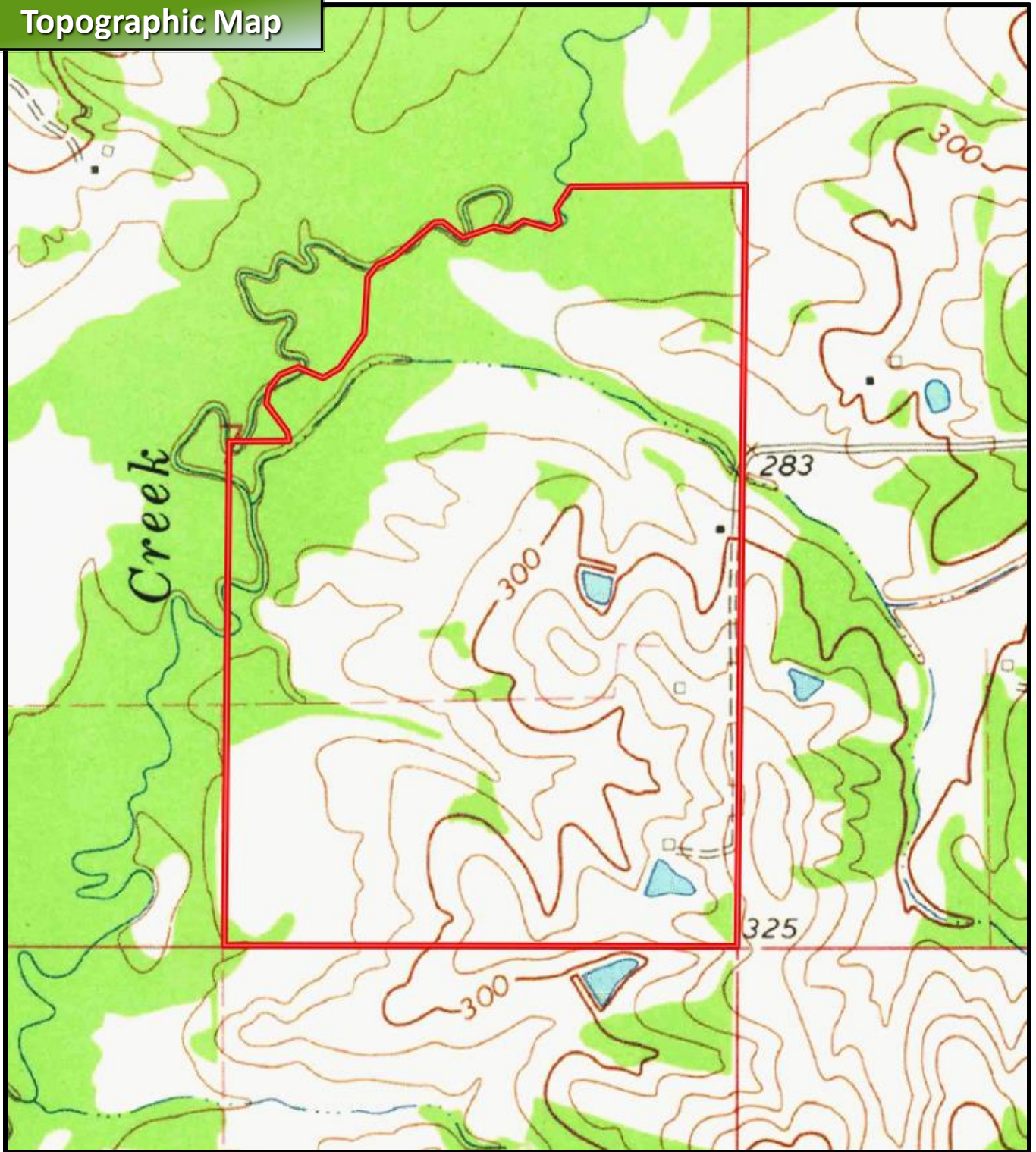
Call The Land Man Today!

TomSmithLandandHomes.com

Information is believed to be accurate but not guaranteed.



Topographic Map



TOM SMITH

ALC®, BROKER

Office: 601.898.2772

Cell: 601.454.9397

Tom@TomSmithLand.com



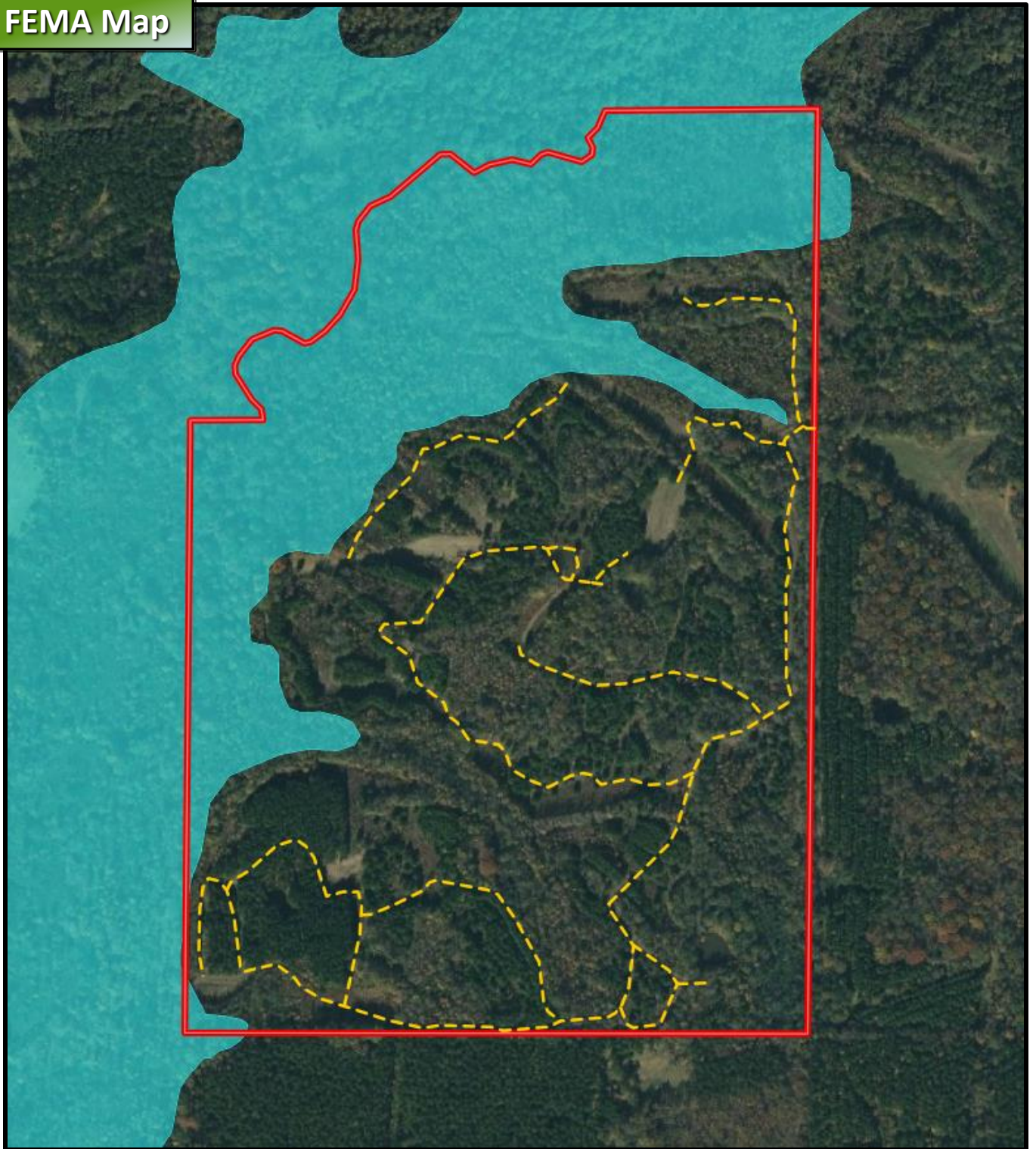
Call The Land Man Today!

TomSmithLandandHomes.com

Information is believed to be accurate but not guaranteed.



FEMA Map



TOM SMITH

ALC®, BROKER

Office: 601.898.2772

Cell: 601.454.9397

Tom@TomSmithLand.com



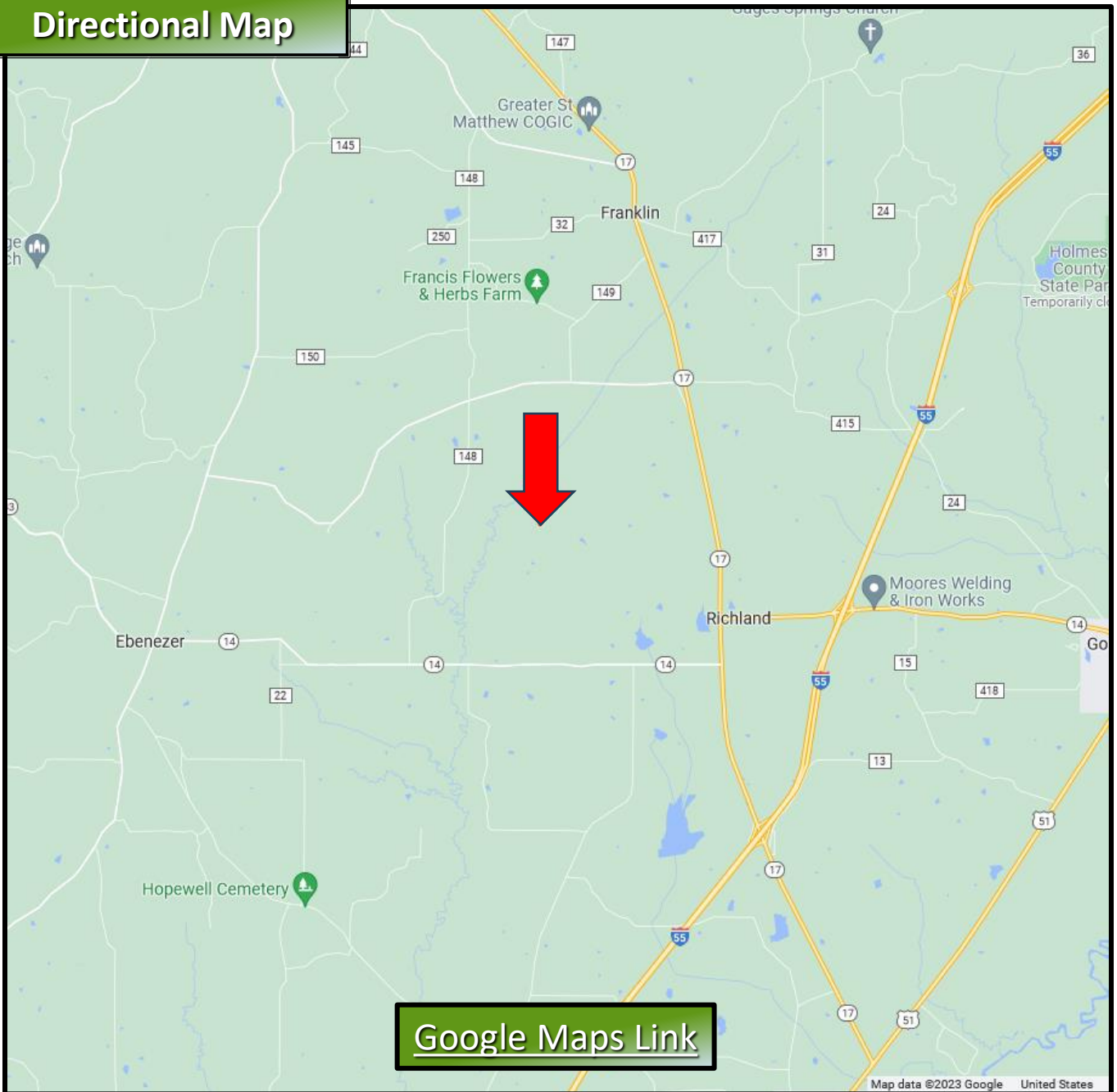
Call The Land Man Today!

TomSmithLandandHomes.com

Information is believed to be accurate but not guaranteed.



Directional Map



Directions from the intersection of MS-17 N & I-55 in Pickens, MS: Travel north on MS-17 N for 3.5 miles. Turn left on Willow Flat Rd and travel 2 miles. The property is at the end of Willow Flat Rd and marked with signs.



**TOM
SMITH**

ALC®, BROKER

Office: 601.898.2772

Cell: 601.454.9397

Tom@TomSmithLand.com



Call The Land Man Today!

TomSmithLandandHomes.com

Information is believed to be accurate but not guaranteed.

