

120± Acres in Jefferson County, MS

\$399,000



SMALLTOWN

HUNTING PROPERTIES
& REAL ESTATE

Office 769-760-0005

Property Profile

Jefferson County Hunting & Timberland

Location:

- Jefferson County, MS
- Foster Road Frontage
- 38 Miles West of Hazlehurst

Coordinates:

- 31.752042, -90.837090

Property Information:

- 120± Acres
- Rolling Terrain
- Food Plots
- Established Trail System
- Outstanding Wildlife Habitat
- Mature Pine, Medium Age Pine, Hardwood, Cutover
- Creek

Property Use:

- Deer
- Turkey
- Timber Investment

Tax Information:

- Parcel 0096-17-002, 0095-08-004: \$638.61 for 2023



SMALLTOWN
HUNTING PROPERTIES
& REAL ESTATESM

DENNIS WEST

EAST MISSISSIPPI MANAGING BROKER

ALABAMA QUALIFYING BROKER

LOUISIANA ASSOCIATE BROKER

C: 601-248-4396 | O: 769-760-0005

dennis@smalltownproperties.com

2121 5th St., Ste 206 - Meridian, MS 39301

smalltownproperties.com

Are you searching for a recreational property with hunting opportunities and timber? Take a look at this 120± acre diverse property in Jefferson County, MS offering an abundance of wildlife, various ages of timber, gravel road frontage, powerline right of way, interior trails and much more.



SMALLTOWN
HUNTING PROPERTIES
& REAL ESTATESM

DENNIS WEST

EAST MISSISSIPPI MANAGING BROKER

ALABAMA QUALIFYING BROKER

LOUISIANA ASSOCIATE BROKER

C: 601-248-4396 | O: 769-760-0005

dennis@smalltownproperties.com

2121 5th St., Ste 206 - Meridian, MS 39301

smalltownproperties.com





Taking a closer look, you will notice a diverse timber stand which includes mature pine, medium age pine, aged cutover and hardwood along a small creek. Miles of interior trails are in place making it easy to access all parts of the property. The powerline right of way and food plots throughout maximize hunting deer, turkey and other wildlife. The property is situated on both sides of Foster Road, only a few miles from Union Church. This hunting and timberland tract is conveniently located approximately 40 minutes west of Hazlehurst, 90 minutes south of the Jackson metro area and just over three hours from New Orleans. To see all this place has to offer, call Dennis West today.



SMALLTOWN

HUNTING PROPERTIES
& REAL ESTATESM

DENNIS WEST

EAST MISSISSIPPI MANAGING BROKER

ALABAMA QUALIFYING BROKER

LOUISIANA ASSOCIATE BROKER

C: 601-248-4396 | O: 769-760-0005

dennis@smalltownproperties.com

2121 5th St., Ste 206 - Meridian, MS 39301

smalltownproperties.com



SMALLTOWN

HUNTING PROPERTIES
& REAL ESTATESM

DENNIS WEST

EAST MISSISSIPPI MANAGING BROKER

ALABAMA QUALIFYING BROKER

LOUISIANA ASSOCIATE BROKER

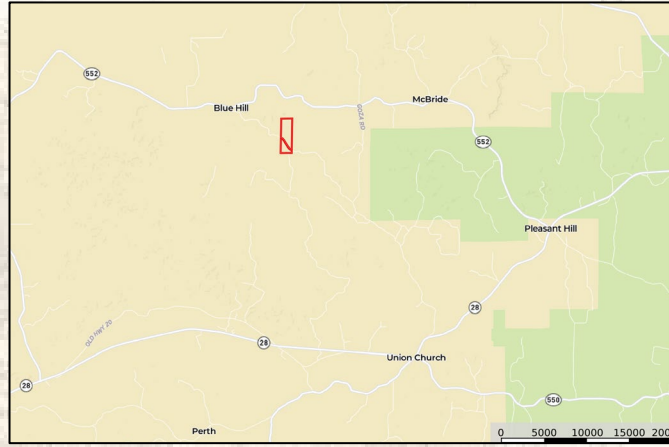
C: 601-248-4396 | O: 769-760-0005

dennis@smalltownproperties.com

2121 5th St., Ste 206 - Meridian, MS 39301

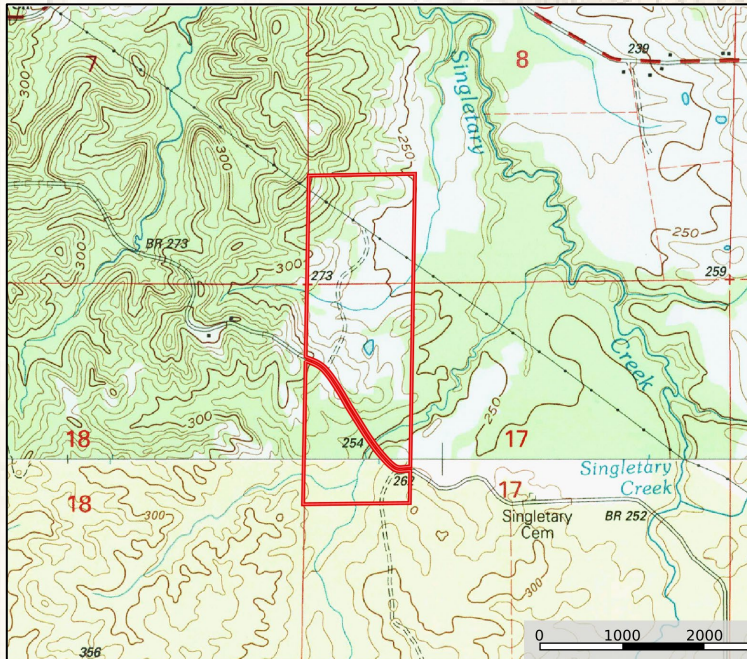
smalltownproperties.com

Google Map Link



- Boundary Consists of 120± Acres
- Foster Road Frontage
- Approximately 38 Miles from I-55

MapRight Link



SMALLTOWN
HUNTING PROPERTIES
& REAL ESTATESM

DENNIS WEST

EAST MISSISSIPPI MANAGING BROKER

ALABAMA QUALIFYING BROKER

LOUISIANA ASSOCIATE BROKER

C: 601-248-4396 | O: 769-760-0005

dennis@smalltownproperties.com

2121 5th St., Ste 206 - Meridian, MS 39301

smalltownproperties.com