

Discover Your Dream Retreat

33.47± Acres in Winston County, MS



\$178,000

This 33.47± acre property on Gum Branch Road, just off Highway 25 in Winston County, offers beautiful rolling meadows and multiple home sites. It's also an excellent spot for deer and turkey hunting. The pine timber on the land could benefit from thinning and management, potentially providing some income. With plenty of road frontage, you have several options to create your private entrance to your secluded piece of heaven. Water and power are available. Conveniently located just 8 minutes from Louisville and 30 minutes from Starkville, MS. Call Tom or Jami today!



TOM SMITH
ALC®, BROKER

O: 601.898.2772 | C: 601.454.9397
Tom@TomSmithLand.com



Expect More. Get More.



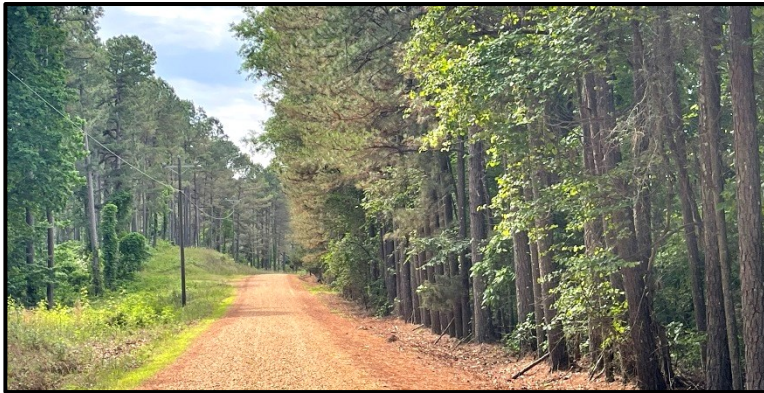
JAMI PRUITT
REALTOR®

O: 662.268.6333 | C: 662.858.0608
Jami@TomSmithHomes.com

TomSmithLandandHomes.com

Information is believed to be accurate but not guaranteed.





TOM SMITH
ALC®, BROKER

O: 601.898.2772 | C: 601.454.9397
Tom@TomSmithLand.com

JAMI PRUITT
REALTOR®

O: 662.268.6333 | C: 662.858.0608
Jami@TomSmithHomes.com

TomSmithLandandHomes.com

Information is believed to be accurate but not guaranteed.





TOM SMITH
ALC®, BROKER

O: 601.898.2772 | C: 601.454.9397
Tom@TomSmithLand.com

JAMI PRUITT
REALTOR®

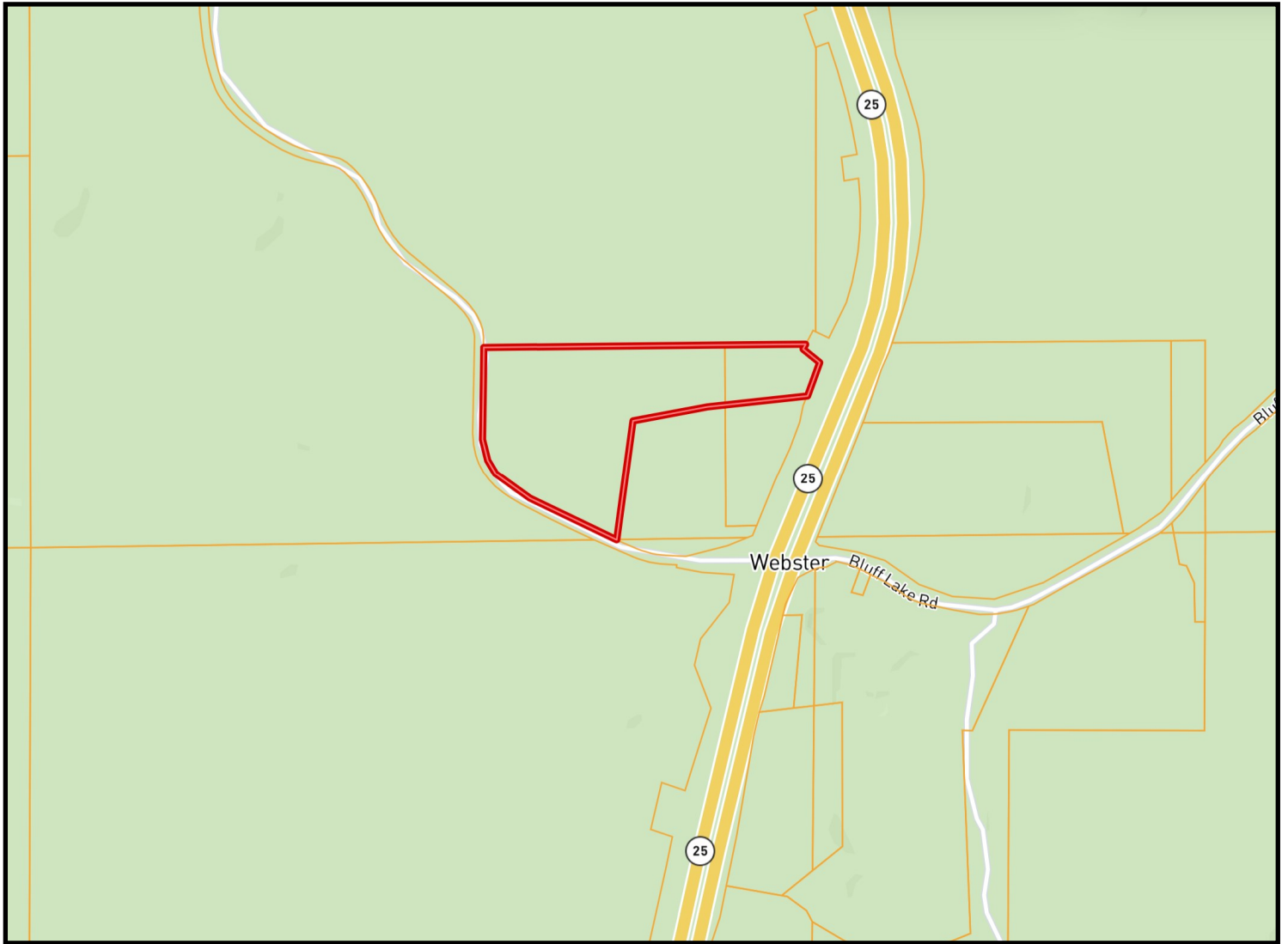
O: 662.268.6333 | C: 662.858.0608
Jami@TomSmithHomes.com

TomSmithLandandHomes.com

Information is believed to be accurate but not guaranteed.



OWNERSHIP MAP



TOM SMITH

ALC®, BROKER

O: 601.898.2772 | C: 601.454.9397

Tom@TomSmithLand.com



JAMI PRUITT

REALTOR®

O: 662.268.6333 | C: 662.858.0608

Jami@TomSmithHomes.com

TomSmithLandandHomes.com

Information is believed to be accurate but not guaranteed.



AERIAL MAP



[CLICK HERE FOR AN INTERACTIVE MAP](#)

TOM SMITH
ALC®, BROKER

O: 601.898.2772 | C: 601.454.9397
Tom@TomSmithLand.com



JAMI PRUITT
REALTOR®

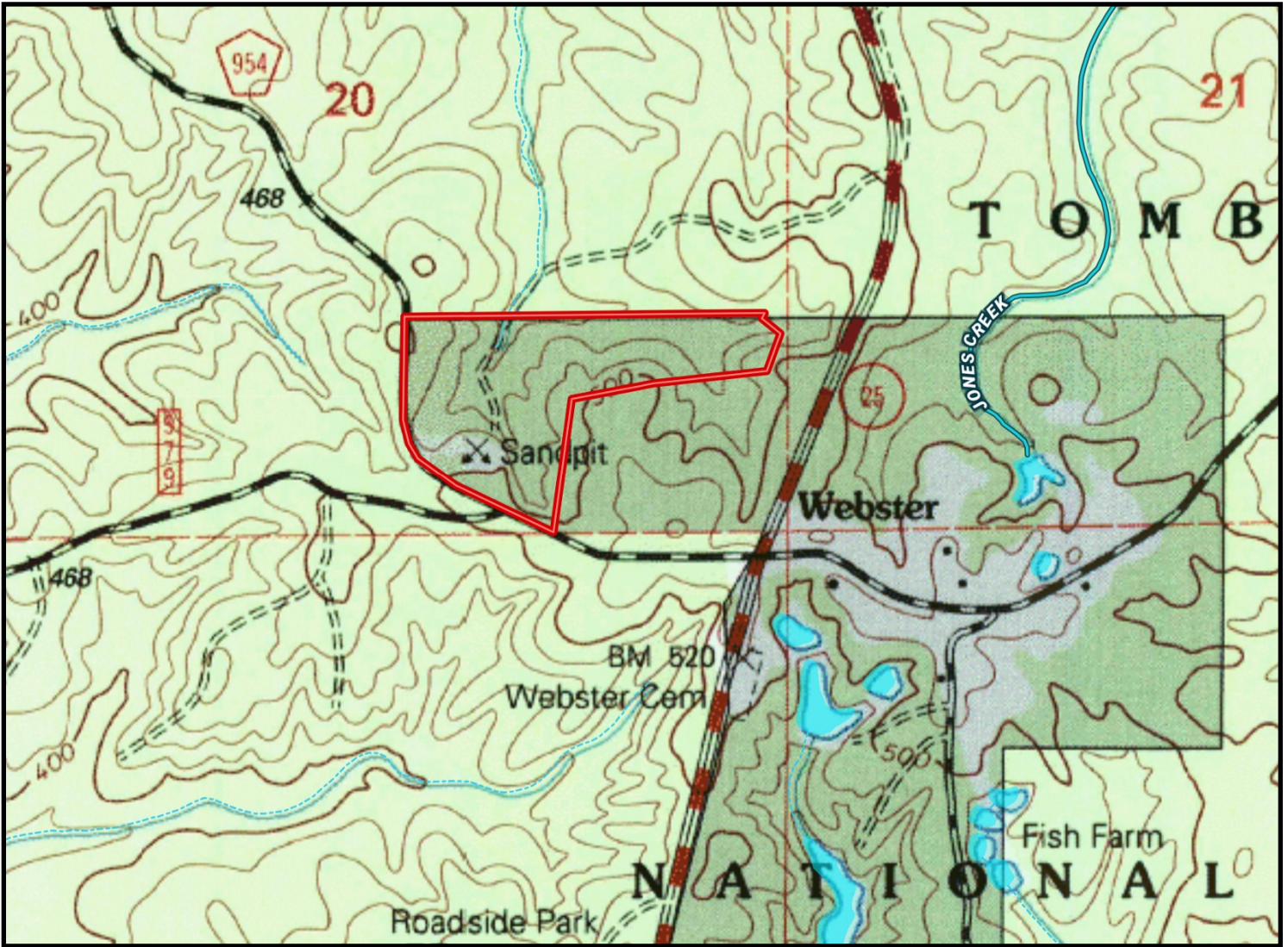
O: 662.268.6333 | C: 662.858.0608
Jami@TomSmithHomes.com

TomSmithLandandHomes.com

Information is believed to be accurate but not guaranteed.



Topo MAP



TOM SMITH

ALC®, BROKER

O: 601.898.2772 | C: 601.454.9397

Tom@TomSmithLand.com



JAMI PRUITT

REALTOR®

O: 662.268.6333 | C: 662.858.0608

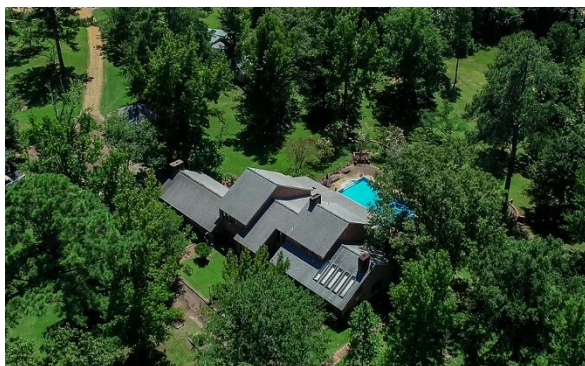
Jami@TomSmithHomes.com

TomSmithLandandHomes.com

Information is believed to be accurate but not guaranteed.



additional acreage available



4,897 sF, two story, 5 bed, 4.5 bath home on
22.53± Acres

May also Additionally be purchased for
\$573,900

TOM SMITH
ALC®, BROKER

O: 601.898.2772 | C: 601.454.9397
Tom@TomSmithLand.com



JAMI PRUITT
REALTOR®

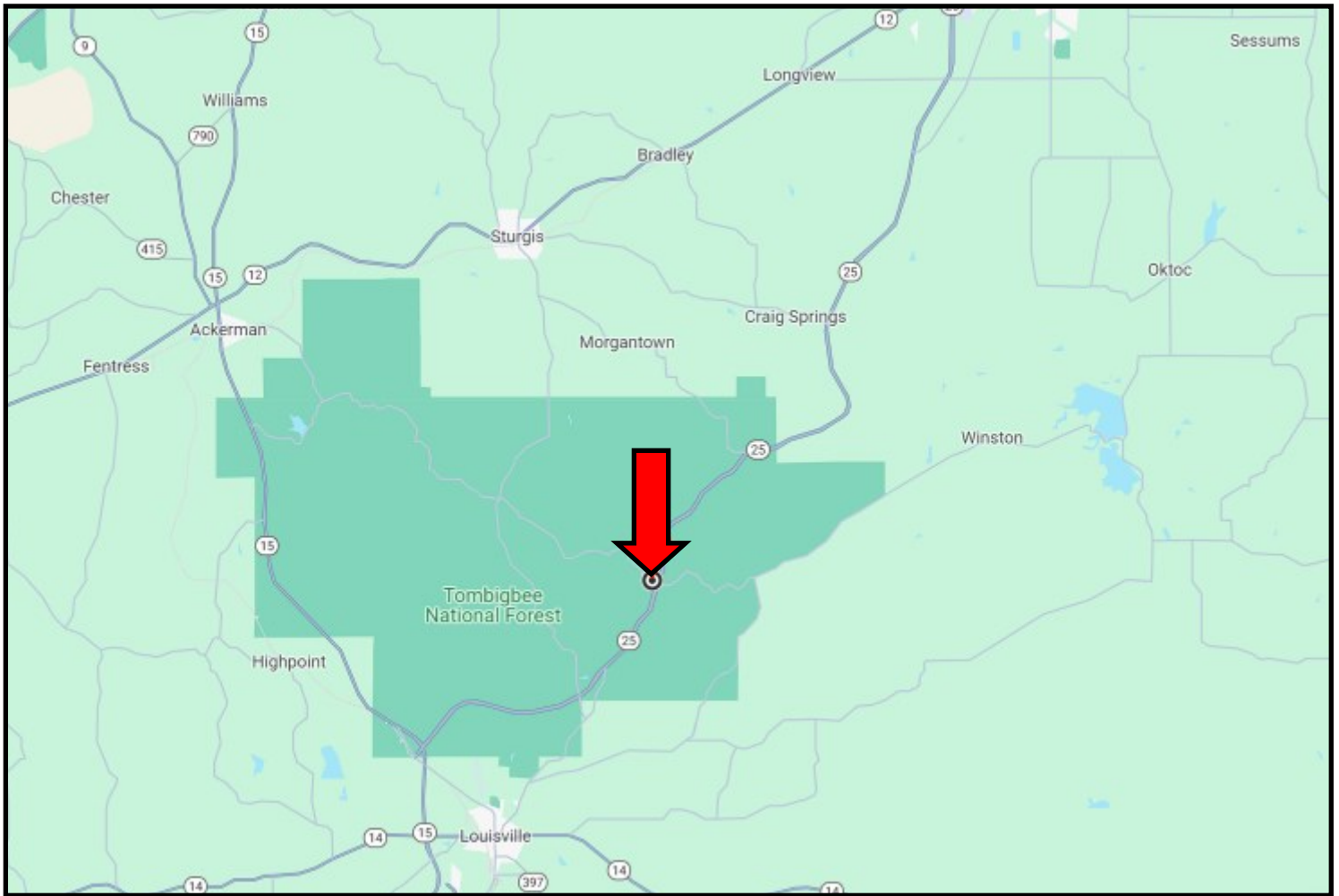
O: 662.268.6333 | C: 662.858.0608
Jami@TomSmithHomes.com

TomSmithLandandHomes.com

Information is believed to be accurate but not guaranteed.



DIRECTIONAL MAP



DIRECTIONS FROM Hwy-15 and Hwy 25 in Louisville, MS: Travel Hwy 25 N 1.9 miles. Use the right lane to merge onto Hwy-25 N towards Starkville. Travel 8.4 miles, then turn left onto Gum Branch Road. The entrance to the property is on the right.

[GOOGLE MAP LINK](#)



TOM SMITH
ALC®, BROKER

O: 601.898.2772 | C: 601.454.9397
Tom@TomSmithLand.com



Expect More. Get More.



JAMI PRUITT
REALTOR®

O: 662.268.6333 | C: 662.858.0608
Jami@TomSmithHomes.com

TomSmithLandandHomes.com

Information is believed to be accurate but not guaranteed.

