

34± Acres in Winston County, MS Timberland • Homesite Potential



\$124,800

This beautiful 34± acre tract in South Winston County offers paved road frontage with utilities available, making it an ideal spot for a future home. The rolling terrain is covered with a mature stand of pine and hardwood timber, providing both natural beauty and investment potential. With abundant wildlife, this property is also a great hunting and recreational tract. Multiple prime homesites make it a rare find. Call Michael today for more details!



**MICHAEL
HALFACRE**

MANAGING BROKER

Office: 662.268.6333

Cell: 662.242.4220

MHalfacre@TomSmithLand.com



Expect More. Get More.

A Real Estate Expert You Can Trust

TomSmithLandandHomes.com

Information is believed to be accurate but not guaranteed.





A Real Estate Expert *You Can Trust!*

MICHAEL HALFACRE

MANAGING BROKER

O: 662.268.6333 C: 662.242.4220

MHalfacre@TomSmithLand.com

TomSmithLandandHomes.com

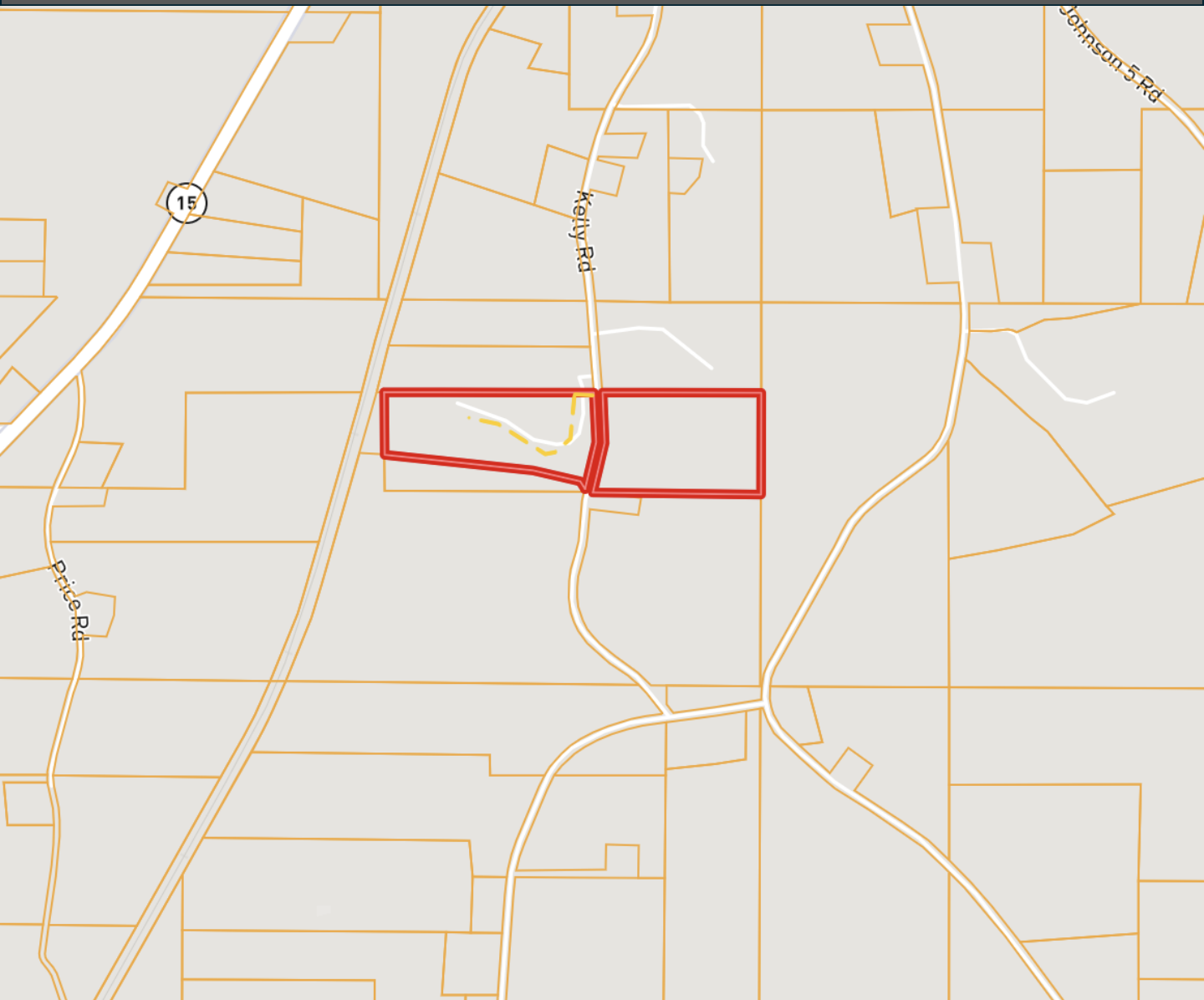


Expect More. Get More.

Information is believed to be accurate but not guaranteed.



Ownership Map



A Real Estate Expert
You Can Trust!

MICHAEL HALFACRE

MANAGING BROKER

O: 662.268.6333 C: 662.242.4220

MHalfacre@TomSmithLand.com

TomSmithLandandHomes.com

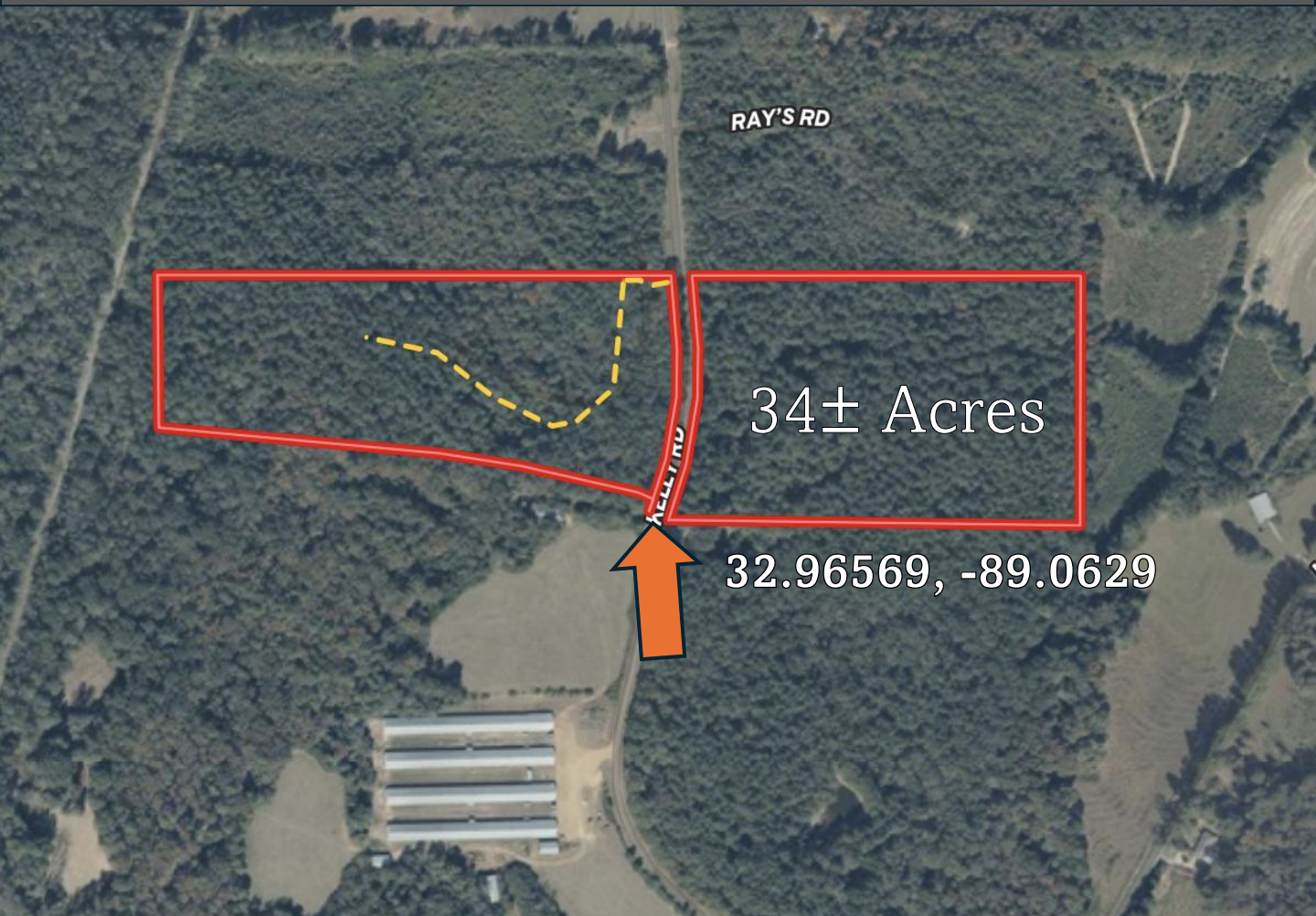


Expect More. Get More.



Information is believed to be accurate but not guaranteed.

Aerial Map



[Click Here for Interactive Map](#)

A Real Estate Expert
You Can Trust!

MICHAEL HALFACRE

MANAGING BROKER

O: 662.268.6333 C: 662.242.4220

MHalfacre@TomSmithLand.com

TomSmithLandandHomes.com

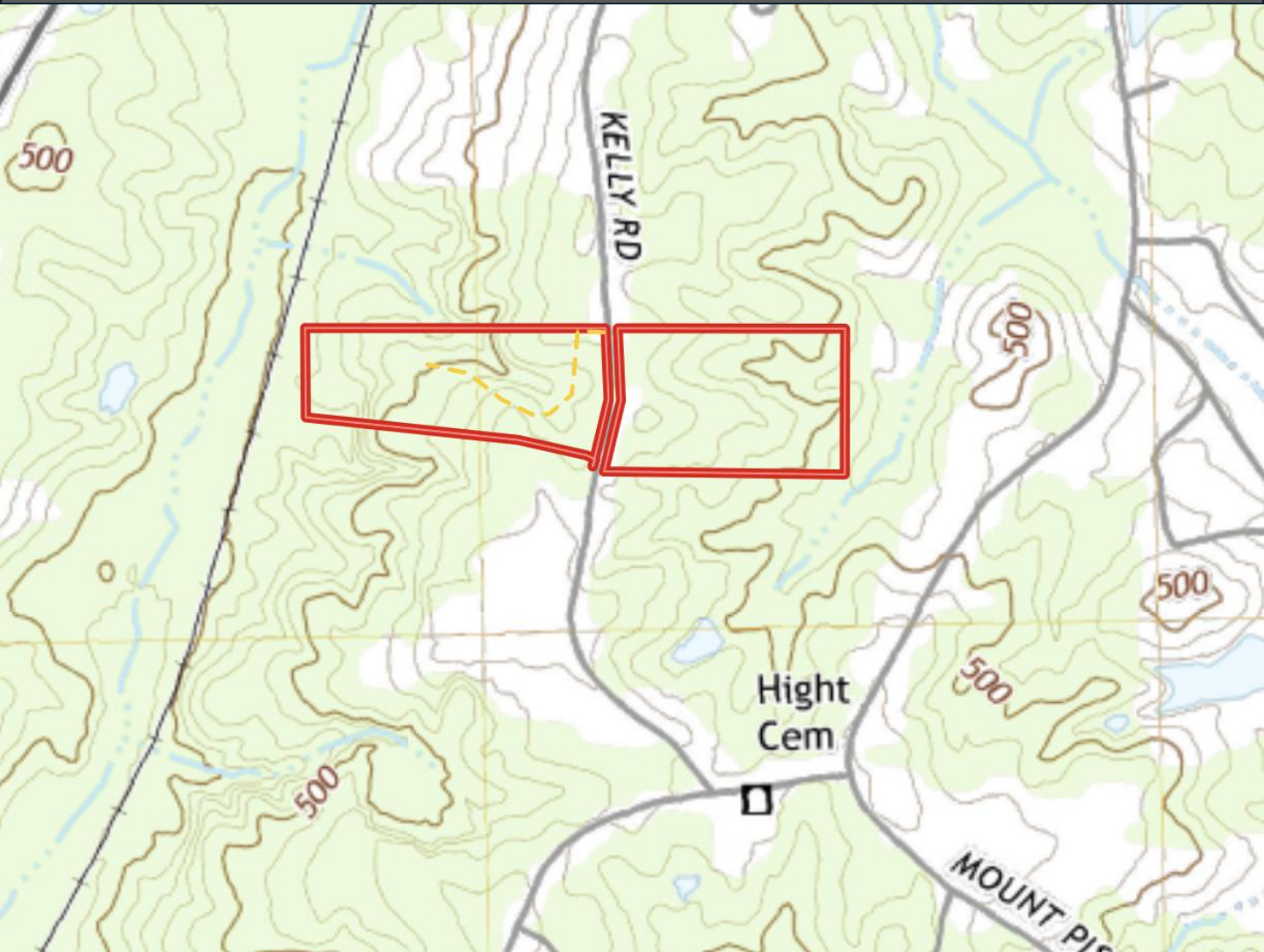


Expect More. Get More.

Information is believed to be accurate but not guaranteed.



Topography Map



A Real Estate Expert
You Can Trust!

MICHAEL HALFACRE

MANAGING BROKER

O: 662.268.6333 C: 662.242.4220

MHalfacre@TomSmithLand.com

TomSmithLandandHomes.com

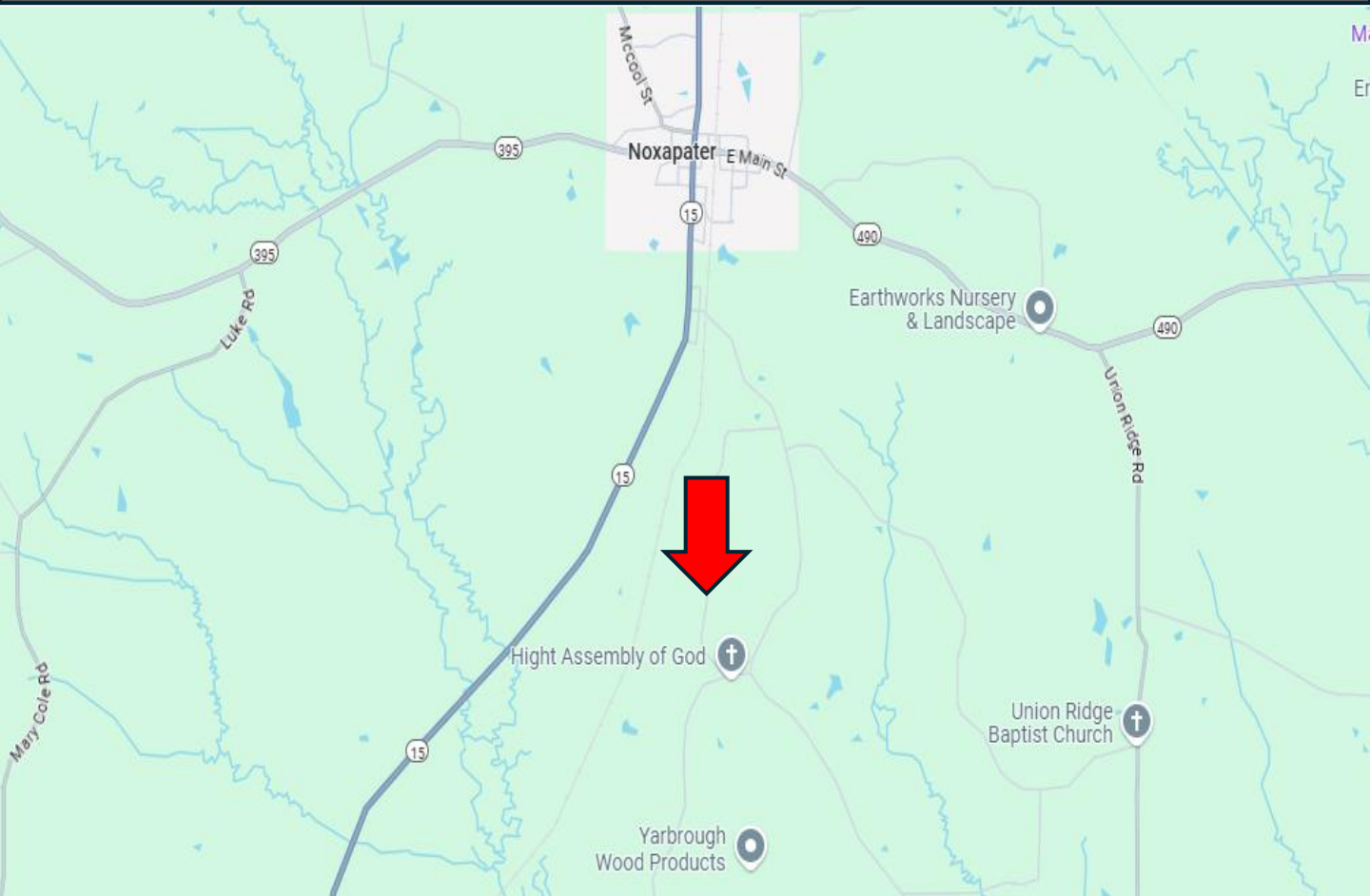


Expect More. Get More.

Information is believed to be accurate but not guaranteed.

2011-2024
BEST
BROKERAGES

Directional Map



From HWY 15 in Noxapater, MS: Take Hwy 15 South for .6 mile and turn left onto Mt. Pisgah Road. Travel .8 mile and turn right onto Kelly Road. Travel .8 mile to property on both sides of Kelly road, marked with signs. [GOOGLE MAP LINK](#)



**MICHAEL
HALFACRE**

MANAGING BROKER

Office: 662.268.6333

Cell: 662.242.4220

MHalfacre@TomSmithLand.com



Expect More. Get More.

A Real Estate Expert You Can Trust

TomSmithLandandHomes.com

Information is believed to be accurate but not guaranteed.

