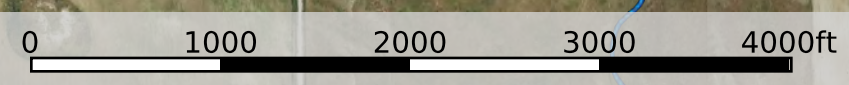
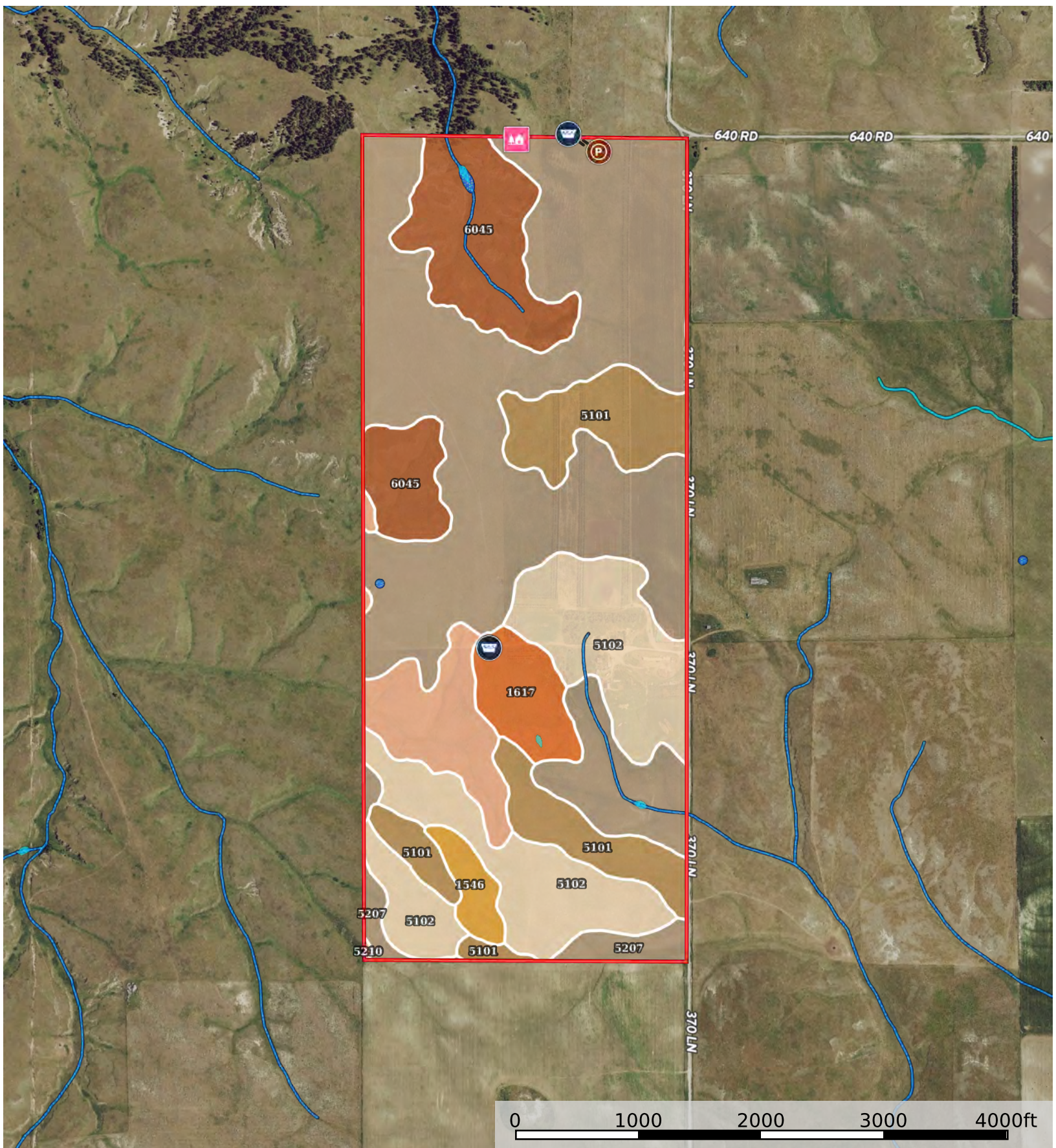


- Pens
- Water Storage Tank
- Cabin
- Boundary
- Wetlands
- Riparian
- Stream, Intermittent
- River/Creek
- Water Body





- Pens
- Water Storage Tank
- Cabin
- Boundary
- Wetlands
- Riparian
- Stream, Intermittent
- River/Creek
- Water Body



|  Boundary 406.3 ac

SOIL CODE	SOIL DESCRIPTION	ACRES	%	CPI	NCCPI	CAP
5207	Oglala-Canyon complex, 6 to 9 percent slopes	195.6 6	48.16	0	29	4e
5102	Alliance loam, 3 to 6 percent slopes	74.27	18.28	0	44	3e
6045	Tassel-Rock outcrop complex, 9 to 70 percent slopes	47.01	11.57	0	1	7s
5101	Alliance loam, 1 to 3 percent slopes	44.42	10.93	0	44	2e
5210	Oglala-Canyon loams, 9 to 25 percent slopes	23.16	5.7	39	29	6e
1617	Keith loam, 0 to 1 percent slopes	15.09	3.71	0	57	2c
1546	Dailey loamy fine sand, 3 to 9 percent slopes	6.69	1.65	0	16	6e
TOTALS		406.3( *)	100%	2.22	30.97	4.02

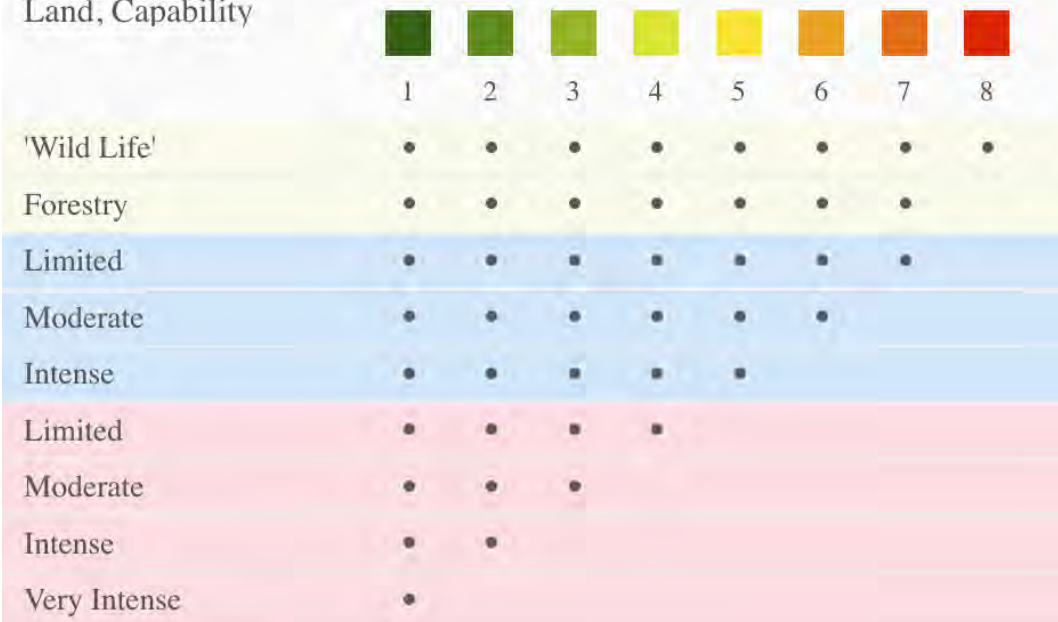
(\*) Total acres may differ in the second decimal compared to the sum of each acreage soil. This is due to a round error because we only show the acres of each soil with two decimal.

### Capability Legend

Increased Limitations and Hazards

Decreased Adaptability and Freedom of Choice Users

Land, Capability



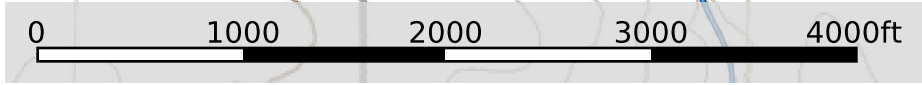
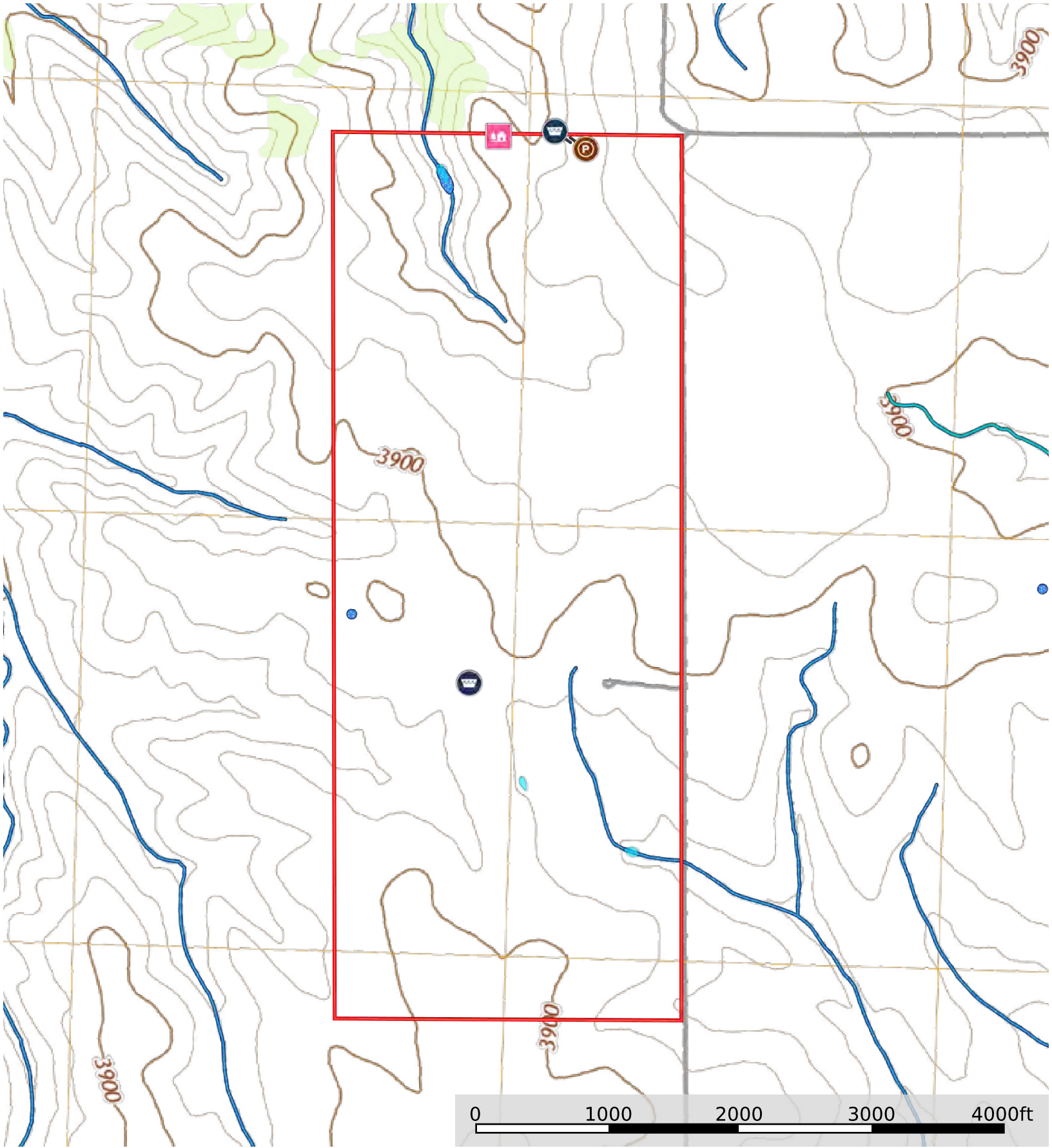
### Grazing Cultivation

(c) climatic limitations (e) susceptibility to erosion

(s) soil limitations within the rooting zone (w) excess of water

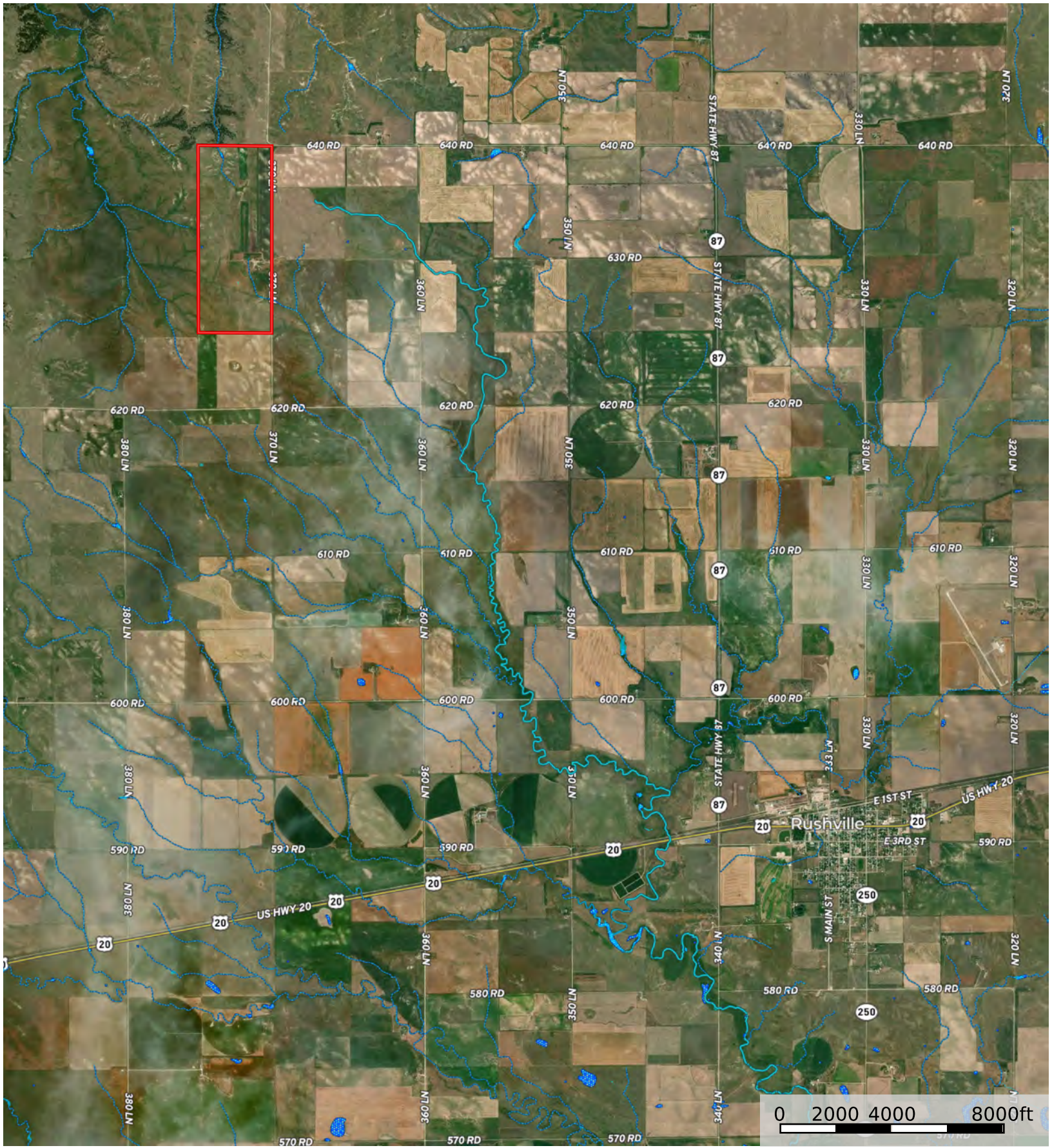
# Tract 3 Sheridan51

Sheridan County, Nebraska, 410 AC +/-



- Pens
- Water Storage Tank
- Cabin
- Boundary
- Wetlands
- Riparian
- Stream, Intermittent
- River/Creek
- Water Body

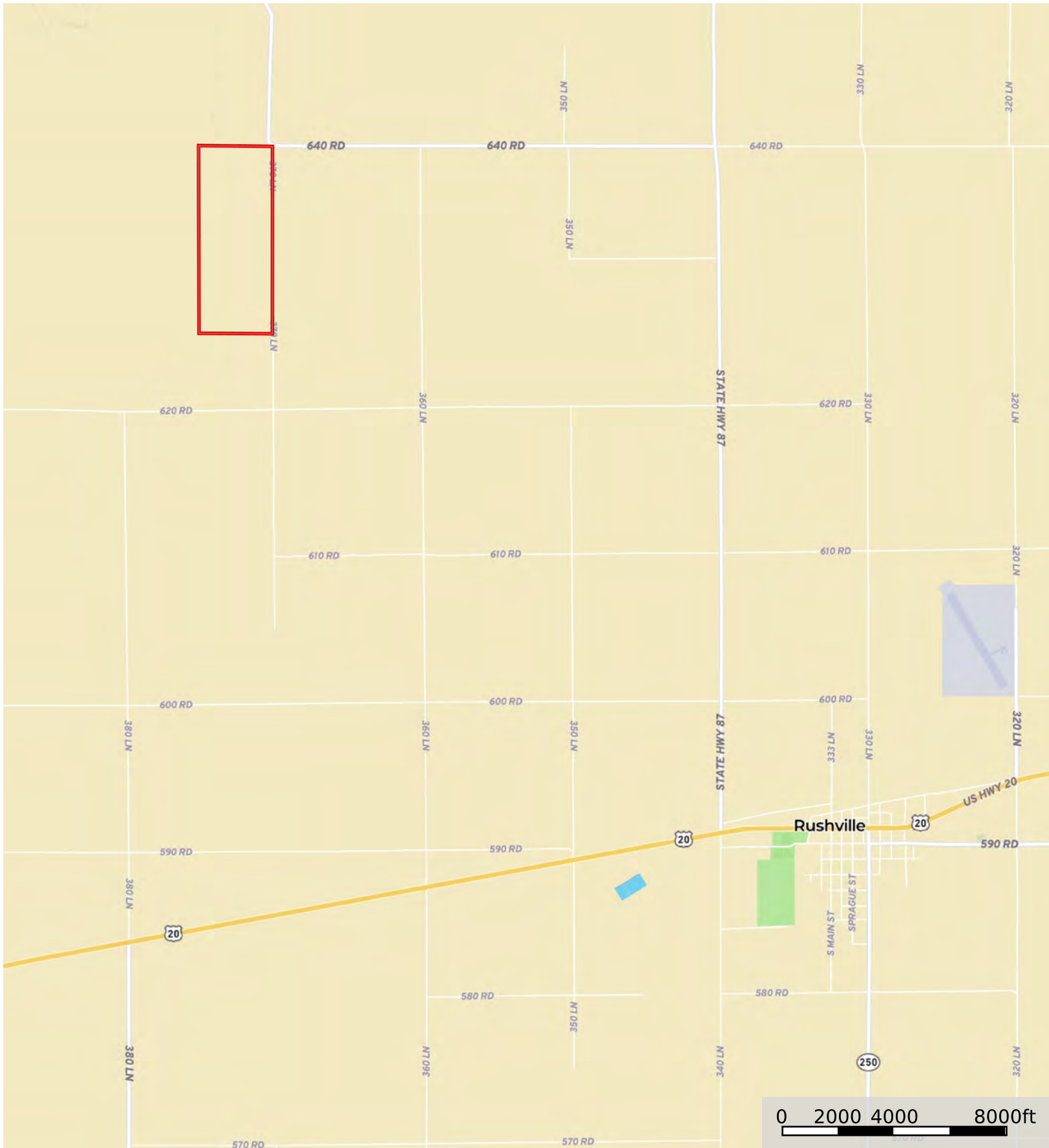






# Tract 3 Sheridan51

Sheridan County, Nebraska, 410 AC +/-



 Boundary