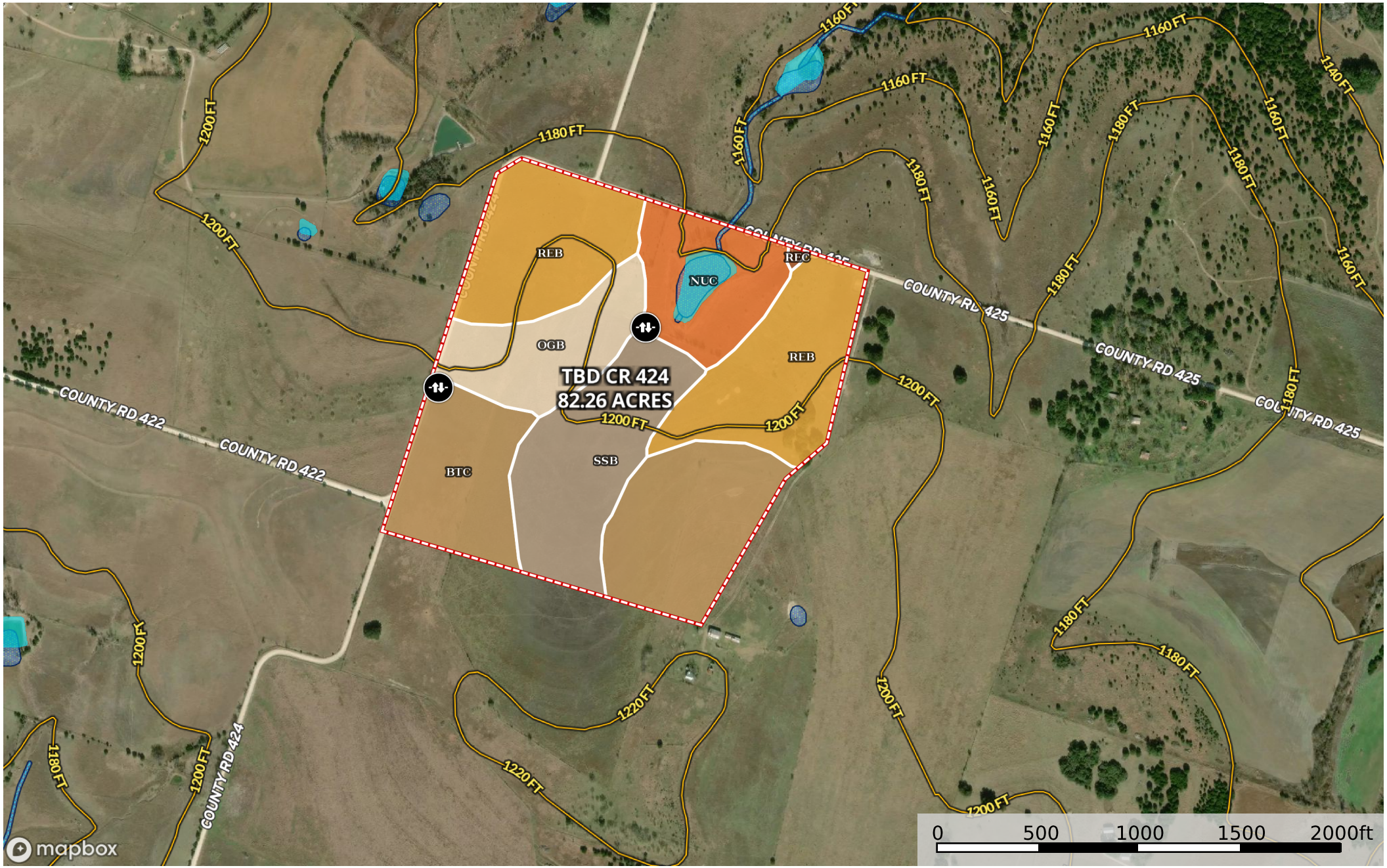


Seale - TBD CR 424 82.26 Acres
Hamilton County, Texas, 82.26 AC +/-



- Windmill
- Gate
- Boundary
- Wetlands
- Riparian
- Stream, Intermittent
- River/Creek
- Water Body

|  Boundary 81.84 ac

SOIL CODE	SOIL DESCRIPTION	ACRES	%	CPI	NCCPI	CAP
ReB	Real gravelly clay loam, 1 to 3 percent slopes	25.08	30.65	0	14	6s
BtC	Brackett gravelly clay loam, 1 to 5 percent slopes	23.34	28.52	0	23	4s
SsB	Slidell clay, 1 to 3 percent slopes	14.2	17.35	0	41	3e
NuC	Nuff silty clay loam, 2 to 6 percent slopes, very stony	9.64	11.78	0	27	6s
OgB	Oglesby gravelly silty clay, 1 to 3 percent slopes	9.41	11.5	0	22	4s
ReC	Real clay loam, 1 to 5 percent slopes, very stony	0.17	0.21	0	12	6s
TOTALS		81.84(*)	100%	-	23.7	4.68

(*) Total acres may differ in the second decimal compared to the sum of each acreage soil. This is due to a round error because we only show the acres of each soil with two decimal.

