

{NAME OF PRELIMINARY PLAT}

PRELIMINARY PLAT

CITY OF CLIVE STANDARD NOTES

- ALL CONSTRUCTION SHALL BE IN ACCORDANCE WITH THE CITY OF BOONE'S DEVELOPMENT REGULATIONS, POLICIES, AND STANDARDS URBAN DESIGN STANDARDS MANUAL (SDAS).
- ONE WEEK PRIOR TO CONSTRUCTION OF ANY PUBLIC IMPROVEMENTS, THE CONTRACTOR SHALL NOTIFY THE CITY OF BOONE.
- THE CONTRACTOR AND DEVELOPER'S ENGINEER SHALL ATTEND A REQUIRED PRE-CONSTRUCTION WITH THE CITY PUBLIC WORKS AND ENGINEERING DEPARTMENTS PRIOR TO COMMENCEMENT OF CONSTRUCTION.
- THE CONTRACTOR SHALL VERIFY THE LOCATION AND PROTECT ALL UTILITIES AND STRUCTURES. DAMAGE TO UTILITIES AND STRUCTURES SHALL BE REPAIRED BY THE CONTRACTOR AT THE CONTRACTOR'S EXPENSE TO THE SATISFACTION OF THE CITY AND THE OWNER.
- THE CONTRACTOR SHALL BE RESPONSIBLE FOR RECORDING THE AS-BUILT LOCATION OF ALL SANITARY SEWER, SUMP AND WATER MAIN SERVICES AND VERIFYING LOCATIONS ON THE AS-BUILT DRAWINGS.
- RECONNECT ANY FIELD TILE THAT IS INTERCEPTED DURING UTILITY CONSTRUCTION. LOCATION OF FIELD TILE SHALL BE NOTED ON THE AS-BUILT DRAWINGS.
- THE CONTRACTOR SHALL BE RESPONSIBLE FOR INSTALLING AND MAINTAINING TRAFFIC CONTROL IN ACCORDANCE WITH THE CURRENT VERSION OF MUTCD.
- PRIOR TO ACCEPTANCE OF THE PUBLIC IMPROVEMENTS, AS-BUILT RECORD DRAWINGS (HORIZONTAL AND VERTICAL AS-BUILT DATA IN STATE PLANE COORDINATES AND NAVD 88 DATUM) FOR ALL WATER, SANITARY SEWER, STORM SEWER PIPING AND ASSOCIATED APPURTENANCES, AND SITE GRADING WILL BE PROVIDED (VOLUME CALCULATIONS FOR ALL STORM WATER DETENTION FACILITIES SHALL ALSO BE PROVIDED).
- SIDEWALK AND DRIVEWAY APPROACH INSTALLATIONS SHALL BE INSPECTED BY THE CITY OF BOONE FOLLOWING A MINIMUM 48-HOUR NOTICE.
- THE OWNER/CONTRACTOR SHALL REMOVE ALL DEBRIS SPILLED ON CITY OF BOONE RIGHT-OF-WAY AND ADJOINING PROPERTY IMMEDIATELY.
- AT NO TIME SHALL EQUIPMENT, CONSTRUCTION MATERIAL AND/OR STOCKPILED FILL BE STORED ON CITY OF BOONE RIGHT-OF-WAY.
- THE DEVELOPER IS RESPONSIBLE FOR MAINTAINING ALL EROSION AND SEDIMENTATION CONTROL DEVICES THROUGHOUT CONSTRUCTION.
- OFF-STREET PARKING AND ACCESS DRIVES SHALL BE PROVIDED PRIOR TO CONSTRUCTION FOR CREWS AND EQUIPMENT.
- ADDITIONAL EROSION AND SEDIMENTATION CONTROL DEVICES MAY BE REQUIRED BY CITY OF BOONE INSPECTORS BASED ON ACTUAL FIELD CONDITION.
- NO CHANGES TO THE APPROVAL PLAN MAY BE MADE WITHOUT THE PRIOR WRITTEN APPROVAL OF THE CITY OF BOONE.
- CONTRACTOR FINANCING AND/OR PROJECT IDENTIFICATION SIGNS SHALL NOT BE INSTALLED ON THE CITY OF BOONE RIGHT-OF-WAY.
- VALVES INCLUDED IN STORMWATER MANAGEMENT FACILITIES SHALL BE CLOSED AT THE TIME OF FINAL INSPECTION AND ISSUANCE OF CERTIFICATE OF OCCUPANCY/APPROVAL OF FINAL PLAT.

EROSION CONTROL

- THE CONTRACTOR SHALL BE RESPONSIBLE FOR ACCOMPLISHING THE REQUIRED CONSTRUCTION WORK ON THIS PROJECT IN SUCH A MANNER AS TO EFFECTIVELY MINIMIZE AND CONTROL THE WATER POLLUTION, WHICH MIGHT BE CAUSED BY SOIL EROSION FROM THE PROJECT. IT IS INTENDED THAT THESE FEATURES BE MAINTAINED IN APPROPRIATE FUNCTIONAL CONDITION FROM INITIAL CONSTRUCTION STAGES TO FINAL COMPLETION OF PROJECT. THE CONTRACTOR SHALL BE RESPONSIBLE FOR COMPLIANCE WITH LOCAL, STATE, AND FEDERAL SOIL EROSION AND SILTATION CONTROLS.
- THE CONTRACTOR SHALL PROTECT ADJOINING PROPERTY INCLUDING PUBLIC UTILITIES, SANITARY AND STORM DRAINAGE SYSTEMS, AND OTHER DEBRIS FROM PROJECT SITE. REPAIR ANY DAMAGE IMMEDIATELY AT NO ADDITIONAL COST.
- THE CONTRACTOR SHALL PREVENT TRANSFER OF EARTH, SILTATION, OR DEBRIS TO ADJOINING PUBLIC OR PRIVATE PROPERTY FROM PROJECT SITE. REMOVE ANY ACCUMULATION OF EARTH OR DEBRIS IMMEDIATELY, AND TAKE REMEDIAL ACTIONS FOR PREVENTION.
- EXISTING AND NEW INTAKES SHALL BE FILTERED DURING CONSTRUCTION.
- ALL INTAKES NOT SPECIFIED TO BE FILTERED SHALL BE PLATED OR SAND BAGGED TO PREVENT TAKING WATER. THE FIBERGLASS MESH SHALL BE PLACED TO ENSURE NO FILTER MATERIAL WILL DROP INTO THE INLET. IN SOME CASES, IT MAY BE NECESSARY TO SET THE GATE OR STEEL PLATE OVER THE FIBERGLASS MESH TO HOLD IT SECURELY IN PLACE. CONSTRUCT IN ACCORDANCE WITH DETAIL TYPE I, II, AND III INLET FILTERS.
- SILT FENCES SHALL BE CONSTRUCTED AT LOCATIONS SPECIFIED ON THE PLANS OR AS DIRECTED BY THE JURISDICTIONAL ENGINEER. THE SILT FENCES SHALL BE IN PLACE PRIOR TO SITE CLEARING AND GRADING. THE BOTTOM OF THE FENCE AND FABRIC SHALL BE EMBEDDED IN THE GROUND A MINIMUM OF 6 INCHES EXCEPT AT LOCATIONS WHERE FENCE IS LOCATED WITHIN DRAINAGEWAYS, IN WHICH CASE IT SHALL BE EMBEDDED A MINIMUM OF 12 INCHES. CONSTRUCT IN ACCORDANCE WITH DETAIL PLATE FOR SILT FENCE.
- IF TEMPORARY EROSION AND POLLUTION CONTROL MEASURES ARE REQUIRED DUE TO THE CONTRACTOR'S NEGLIGENCE, CARELESSNESS, OR FAILURE TO INSTALL PERMANENT CONTROLS AS A PART OF THE WORK AS SCHEDULED, AND ARE ORDERED BY THE JURISDICTIONAL ENGINEER, SUCH WORK SHALL BE PERFORMED BY THE CONTRACTOR AT OWN EXPENSE.
- IN CASE OF REPEATED FAILURES ON THE PART OF THE CONTRACTOR TO CONTROL EROSION, POLLUTION, AND/OR SILTATION, THE JURISDICTIONAL ENGINEER RESERVES THE RIGHT TO EMPLOY OUTSIDE ASSISTANCE OR TO USE HIS OWN FORCES TO PROVIDE THE NECESSARY CORRECTIVE MEASURES. SUCH INCURRED DIRECT COSTS WILL BE CHARGED TO THE CONTRACTOR. THE CONTRACTOR'S AND APPROPRIATE DEDUCTIONS WILL BE MADE FROM HIS MONTHLY PROGRESS ESTIMATE AND FINAL PAYMENT.
- THE CONTRACTOR SHALL BE RESPONSIBLE TO PERFORM CLEANING DURING INSTALLATION OF WORK AND UPON COMPLETION OF WORK.
- REMOVE FROM THE SITE ALL EXCESS MATERIALS, DEBRIS, AND EQUIPMENT.
- HOSE DOWN AND/OR BROOM CLEAN ALL PAVED SURFACES.
- REPAIR ANY DAMAGE RESULTING FROM EROSION CONTROL OPERATIONS.
- THE CONTRACTOR SHALL REMOVE EROSION CONTROL DEVICES UPON APPROVAL OF JURISDICTIONAL ENGINEER. THE CONTRACTOR SHALL REMOVE ALL EROSION CONTROL MATERIALS FROM THE SITE. THE CONTRACTOR SHALL PERFORM CLEANUP OPERATIONS UPON COMPLETION OF REMOVAL.

SANITARY SEWER SPECIFICATIONS

- ALL SANITARY SEWER SHALL BE PVC TRUSS PIPE WITH CLASS F3 BEDDING UNLESS OTHERWISE NOTED ON PLANS.
- THE CONTRACTOR SHALL INSTALL SEWER TAPE AT THE END OF EACH SANITARY SEWER SERVICE.
- ALL INVERTS LOCATED AT AN ELEVATION ABOVE THE CENTERLINE OF THE EXISTING THROUGH PIPE AND LESS THAN 2.0 FEET ABOVE THE MANHOLE FLOOR SHALL HAVE A POURED-IN-PLACE SLOPED INVERT.
- ALL MANHOLES WITHIN PAVEMENT SHALL HAVE TYPE B ADJUSTABLE CASTINGS AND INTERNAL CHIMNEY SEALS. ALL MANHOLES NOT WITHIN PAVEMENT SHALL HAVE TYPE A NON-ADJUSTABLE CASTINGS AND EXTERNAL CHIMNEY SEALS.
- ALL 4-INCH AND 6-INCH SANITARY SEWER SERVICES SHALL BE SDR 35 IN ACCORDANCE WITH SDAS AND SHALL BE EXTENDED 10 FEET INSIDE LOT LINES UNLESS OTHERWISE NOTED ON PLANS.
- MANHOLE STEPS ARE REQUIRED IN ALL SANITARY SEWER MANHOLES.
- MANHOLE COVERS SHALL HAVE RAISED DIAMOND ROUGHNESS PATTERNS.
- THE CONTRACTOR SHALL TELEVISION EVERY SANITARY SEWER LINE AND PROVIDE A COPY OF THE DIGITAL REPORT INCLUDING A VIDEO RECORDING UTILIZING A PACP COMPLIANT FORMAT TO THE PUBLIC WORKS DIRECTOR. USING A 500 GALLON TANK AND GARDEN HOSE, THE CONTRACTOR SHALL GRAVITY FLOW WATER DOWN THE PIPE DURING TELEVISIONING SO DIPS AND SAGS CAN BE IDENTIFIED. THE CITY SHALL NOTIFY THE CONTRACTOR OF ANY NECESSARY CLEANING AND/OR REPAIRS. THE CONTRACTOR SHALL JET CLEAN AND VACUUM ANY SECTION OF PIPE FROM MANHOLE TO MANHOLE WITH MUD OR DEBRIS GREATER THAN 1 FOOT DEEP ALONG WITH ANY DOWNSTREAM SECTIONS AS REQUIRED DUE TO CONSTRUCTION. THESE SEGMENTS SHALL THEN BE RE-TELEVISIONED TO DEMONSTRATE PIPES ARE CLEAN.
- REQUIRED TELEVISIONING SHALL BE AT THE CONTRACTOR'S EXPENSE.
- SPECIAL SANITARY SEWER CONNECTIONS SHALL BE MADE WITH 441 STYLE WATER MAIN CLAMP.
- PROVIDE SHOP DRAWINGS FOR MANHOLE STRUCTURES FOR APPROVAL BY CITY PRIOR TO ORDERING OR INSTALLING MANHOLES.

WATER MAIN SPECIFICATIONS

- PIPE MATERIALS SHALL BE AWWA C900 CLASS 150 PVC.
- INSTALL TRACER WIRE, #12 AWG COPPER CONDUCTOR WITH LINEAR LOW-DENSITY POLYETHYLENE INSULATION MATERIAL, UNDER PIPE AND BRING TRACER WIRE TO SURFACE AT HYDRANT WITH A TRIVIEW TRACER WIRE STATION.
- CONNECT NEW TRACER TO EXISTING USING APPROVED SPLICE KIT AND PROVIDE A GROUND ROD AT END OF TRACER WIRE FOR LOCATION AND EXTENSION IN FUTURE. THE CITY WILL TEST THE TRACER WIRE PRIOR TO ACCEPTANCE. ANY NECESSARY REPAIRS SHALL BE AT THE CONTRACTOR'S EXPENSE.
- HYDRANTS SHALL BE SET 3.5 FEET FROM THE WATER MAIN.
- HYDRANTS VALVE BOXES AND COVERS SHALL BE SET TO CONFORM TO FINISHED PAVEMENT ELEVATIONS.
- HYDRANTS SHALL BE WATROUS PRODUCTS, OPEN LEFT.
- SERVICES SHALL BE 1-INCH COPPER.
- STOP BOXES FOR 1 THROUGH 2 WATER SERVICE LINES SHALL INCLUDE A STAINLESS STEEL SELF-CENTERING ROD WITH STAINLESS STEEL COTTER PIN WITHIN THE STOP BOX HOUSING WITH A 1.25" EXTENDABLE UPPER SECTION AND LID WITH A 1.25" PENTAGON PLUG. ALL STOP BOX INSTALLATIONS SHALL BE COMPLETED IN SUCH A MANNER THAT THE LID IS ALLOWED TO RISE WITH THE FROST AND LOWER IF DROVEN OVER WITHOUT DAMAGE TO CURB VALVE. FINISH GRADE OF THE LID SHALL BE LEVEL WITH THE SURROUNDING SURFACE SO AS NOT TO PRESENT A HAZARD TO THE PUBLIC.
- WATER MAIN TO HAVE 8.5 FEET BURY TYPICAL EXCEPT AT CRITICAL CROSSINGS.
- ALL HYDRANTS SHALL BE PAINTED YELLOW IN ACCORDANCE WITH CITY OF CLIVE STANDARDS.
- ALL VALVES SHALL HAVE VALVE BOX ADAPTER INSTALLED TO MAINTAIN ALIGNMENT.
- THE CONTRACTOR SHALL REMOVE CHAINS ON ALL HYDRANTS.
- THE CONTRACTOR SHALL CONTACT THE CITY OF CLIVE WATER DEPARTMENT FOR THE OPERATION OF EXISTING VALVES. WATER VALVES SHALL NOT BE OPERATED BY ANY ENTITY OTHER THAN THE CITY OF CLIVE WATER DEPARTMENT.
- THE CONTRACTOR SHALL NOT USE WATER UNLESS IT IS PART OF THE PURIFICATION PROCESS OF THE NEW MAIN. WATER NEEDED FOR ANY REASON AFTER BACTERIA TESTING HAS BEEN COMPLETED AND PASSED WILL REQUIRE PRIOR APPROVAL FROM THE CITY.
- THE CONTRACTOR SHALL INSTALL TEST PORTS AT LOCATIONS AS DIRECTED BY CITY STAFF DURING CONSTRUCTION TO AID IN DISINFECTION AND TESTING OF THE NEW SYSTEM.

WESTGATE PARKWAY NOTES

- WESTGATE PARKWAY HAS A PAVEMENT WIDTH OF 26' AND A ROW WIDTH OF 40'.
- LOTS ALONG WESTGATE PARKWAY SHALL EITHER ORIENT THE GARAGE DOORS AWAY FROM WESTGATE PARKWAY OR (II) LOCATE THE GARAGE DOORS FACING WESTGATE PARKWAY A MINIMUM OF 10 FT BEHIND THE FRONT FAÇADE.
- IN THE CASE OF CORNER LOTS ON WESTGATE PARKWAY, THE DRIVEWAY SHALL ACCESS THE SIDE STREET ONLY.
- ALL HOMES LOCATED ON LOTS ALONG WESTGATE PARKWAY SHALL BE ORIENTED AND CONSTRUCTED WITH A FRONT DOOR FACING WESTGATE PARKWAY.
- A 20' CITY IMPROVEMENT EASEMENT IS REQUIRED ALONG WESTGATE PARKWAY.

ALPINE DRIVE NOTES

- ALPINE DRIVE HAS A PAVEMENT WIDTH OF 26' AND A ROW WIDTH OF 40'.
- A 15 FT PERMANENT CITY IMPROVEMENT EASEMENT IS REQUIRED ALONG EACH SIDE OF ALPINE DRIVE.
- ONE STREET TREE PER 40' LINEAR FT SHALL BE PLANTED APPROXIMATELY EVENLY ALONG ALPINE DRIVE EXCLUSIVE OF STREET INTERSECTIONS AND ASSOCIATED SIGHT TRIANGLE.
- ALL STREET TREES AND SIDEWALKS TO BE INSTALLED WITH HOME CONSTRUCTION.

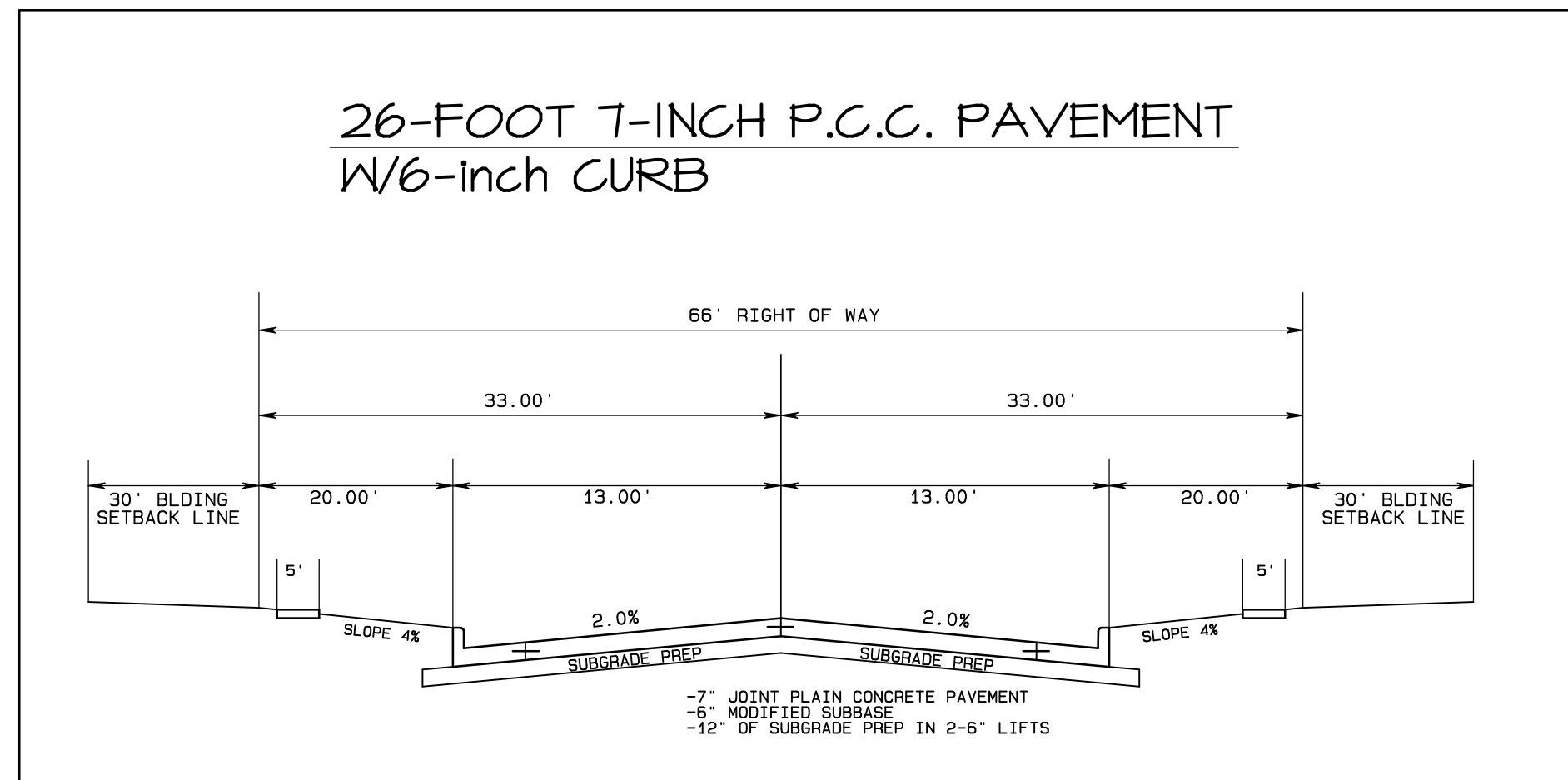
FEMA FLOODPLAIN

SUBJECT PROPERTY IS LOCATED IN UNSHADED ZONE 'X' (AREAS DETERMINED TO BE OUTSIDE THE 0.2% ANNUAL CHANCE FLOODPLAIN) AS SHOWN ON THE FLOOD INSURANCE RATE MAPS FOR THE CITY OF BOONE, BOONE COUNTY, IOWA, MAP PANEL ### WITH AN EFFECTIVE DATE OF ###

PCC PAVING SPECIFICATIONS

A. LOCAL

- PAVEMENT FOUNDATION
 - A GEOTECHNICAL REPORT IS REQUIRED IN ACCORDANCE WITH CHAPTER 6 OF THE SDAS DESIGN MANUAL. THE REPORT SHALL BE SIGNED BY A LICENSED PROFESSIONAL ENGINEER IN THE STATE OF IOWA. THE GEOTECHNICAL REPORT SHALL SPECIFY ACTIONS NECESSARY TO PROVIDE A SUBGRADE WITH A MINIMUM CBR OF 10. THE REPORT SHALL INCLUDE ALL DATA AND ANALYSIS NECESSARY TO SUPPORT THE RECOMMENDATIONS.
 - A MINIMUM OF 12" MGD BELOW SUBBASE SHALL BE REQUIRED.
 - IF A MESH OR STEEL PLATE OVER THE SUBBASE IS REQUIRED, SECTION 2010, 2.04.D.3A) WITH SUBDRAINS (SDAS SPECIFICATIONS MANUAL FIGURE 4040.231, AND BACKFILLING WITH POROUS BACKFILL MATERIAL (SDAS SPECIFICATIONS MANUAL, SECTION 4040, 2.04) (POROUS BACKFILL MATERIAL MUST EXTEND TO MODIFIED SUBBASE).
- PAVEMENT
 - CONCRETE - CLASS C MIX (C-SUD) (IOWA DOT, 3M 509, WITH TYPE 1 CEMENT AND AGGREGATE PROPORTIONS OF 55% COARSE AND 45% FINE, SLAG IS NOT ALLOWED)
 - AIR ENTRAINMENT SHALL BE 6% TO 8% AFTER PLACEMENT
 - WATER TO CEMENT (W/C) RATIO SHALL BE 0.40 WITH A MAX OF 0.45
 - SUPPLEMENTARY CEMENTITIOUS MATERIALS (SCMS) - FLY ASH - 20% CLASS FOR CLASS C SHALL BE USED (SDAS SPECIFICATIONS MANUAL SECTION 7010, 2.01.B1).
 - THICKNESS
 - 7" JOINTED PLAIN CONCRETE PAVEMENT (JPCP) OR
 - 6" JOINTED, REINFORCED CONCRETE PAVEMENT (JRCP) (SDAS DESIGN MANUAL FIGURE SG-2.11 FOR 26' WIDE PAVEMENT OR SDAS DESIGN MANUAL FIGURE SG-2.12 FOR 31' WIDE PAVEMENT) (REINFORCEMENT FOR OTHER PAVEMENT WIDTHS MUST BE APPROVED BY THE CITY)
 - JOINTING
 - QUARTER POINT JOINTING SHALL BE USED FOR 26' AND 31' PAVEMENTS (SU DAS SPECIFICATIONS MANUAL FIGURE 7010.901). QUARTER POINT JOINTING SHALL BE USED FOR OTHER PAVEMENT WIDTHS AND MUST BE APPROVED BY CITY.
 - TRANSVERSE JOINT SPACING SHALL BE 14' FOR 7" THICK PAVEMENT AND 12' FOR 6" THICK PAVEMENT.



STORM SEWER SPECIFICATIONS

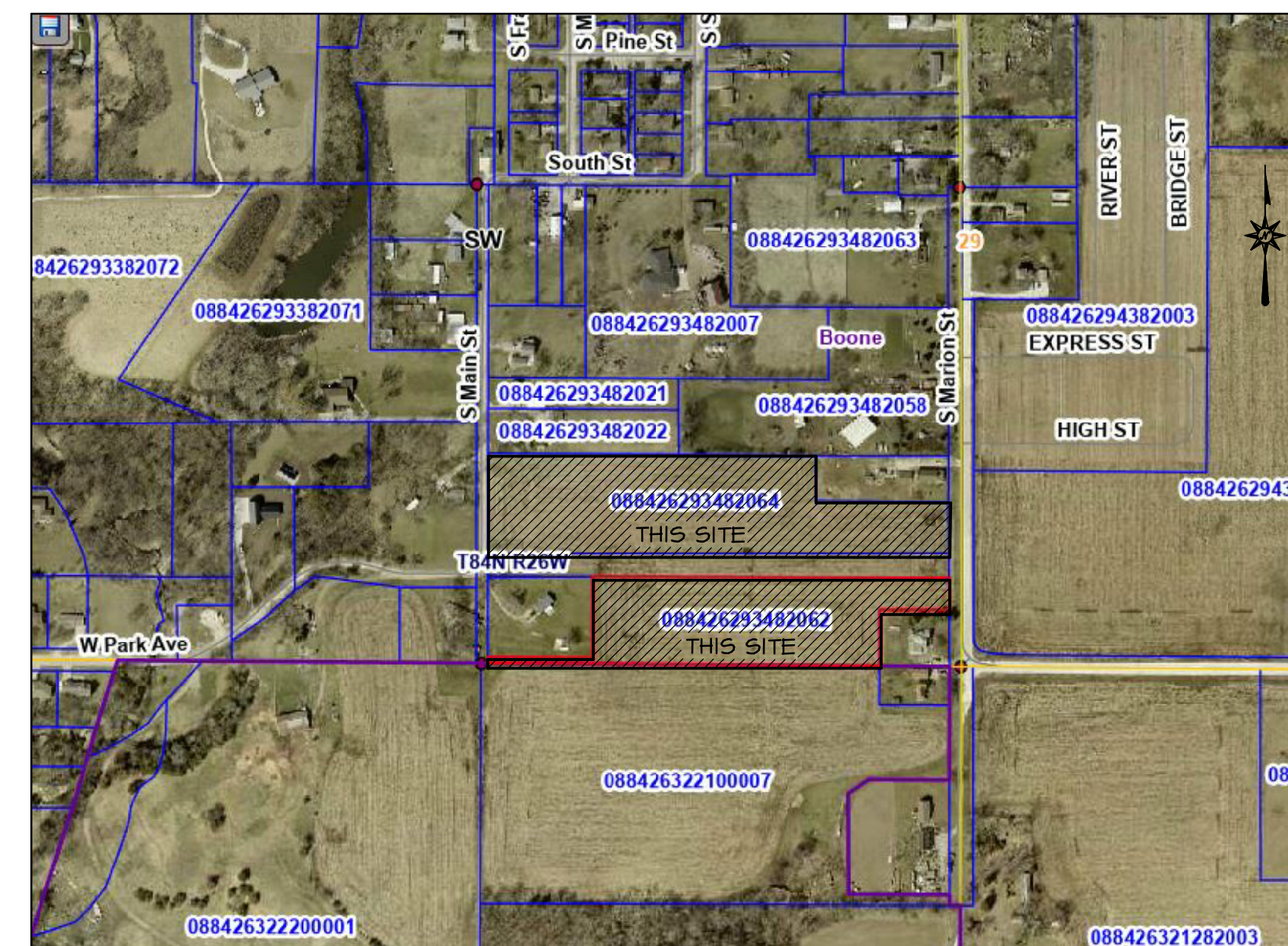
- THE CONTRACTOR SHALL TELEVISION EVERY STORM SEWER LINE AND PROVIDE A COPY OF THE DIGITAL REPORT INCLUDING A VIDEO RECORDING UTILIZING A PACP COMPLIANT FORMAT TO THE PUBLIC WORKS DIRECTOR.
- ALL INTAKE CASTINGS SHALL HAVE PHASE 2 ENVIRONMENTAL SYMBOLOLOGY OR TEXT.
- INSTALLATION OF THIS INCLUDES CLOSING CONSTRUCTION ENTRANCES WHILE NOT IN USE.
- PROVIDE SUBDRAIN BEHIND BACK OF CURB ON PUBLIC STREETS AS REQUIRED BASED ON SUBSURFACE MOISTURE CONDITIONS. CONNECT SUBDRAIN TO STORM SEWER INTAKE USING RCP PIPE BENEATH PAVEMENT.
- ALL INTAKES SHALL HAVE VANE GRATES.
- 8-INCH FOOTING DRAINS TO BE PVC, SDR 35.
- FOOTING DRAIN SERVICES TO BE 4-INCH PVC, SDR 35. EXTEND SERVICES 10' INSIDE LOT UNLESS OTHERWISE NOTED.
- ALL INTAKES SHALL BE LOCATED A MINIMUM OF 7.5 FEET FROM END OF RETURNS.
- ALL INTAKES SHALL BE LOCATED A MINIMUM OF 1 FOOT FROM DRIVEWAY FLARES.
- THE CONTRACTOR SHALL PROVIDE A MINIMUM OF 6" COVER OVER ALL STORM SEWER, INCLUDING SUMP SERVICES.
- ALL INTAKES SHALL BE POURED-IN-PLACE CONCRETE STRUCTURES.

GENERAL SPECIFICATIONS

- THE CONTRACTOR SHALL MAINTAIN TRAFFIC CONTROL THROUGHOUT THE ENTIRETY OF THE PROJECT. ALL TRAFFIC CONTROL PLANS SHALL BE APPROVED BY THE CITY PRIOR TO INSTALLATION. THIS INCLUDES CLOSING CONSTRUCTION ENTRANCES WHILE NOT IN USE.
- WORKING HOURS ARE 7 AM TO 9 PM M-F, 8-9 SATURDAY UNLESS OTHERWISE SPECIFIED. SUNDAY AND HOLIDAYS BY APPROVAL OF THE ENGINEER ONLY.
- ALL LOTS AND ROAD RIGHT-OF-WAY SHALL BE SODDED AT TIME OF HOME CONSTRUCTION.

ZONING INFORMATION SUMMARY

VICINITY SKETCH



SITE OWNER

ELITE GUTTERS LLC
1209 NW HUGG DR
POLK CITY, IA 50226

ENGINEER CERTIFICATION

LAND SURVEYOR CERTIFICATION

TITLE SHEET/COVER SHEET



South Main Street

South Marlon Street

West Park Avenue

West Park Avenue

{NAME OF PRELIMINARY PLAT}

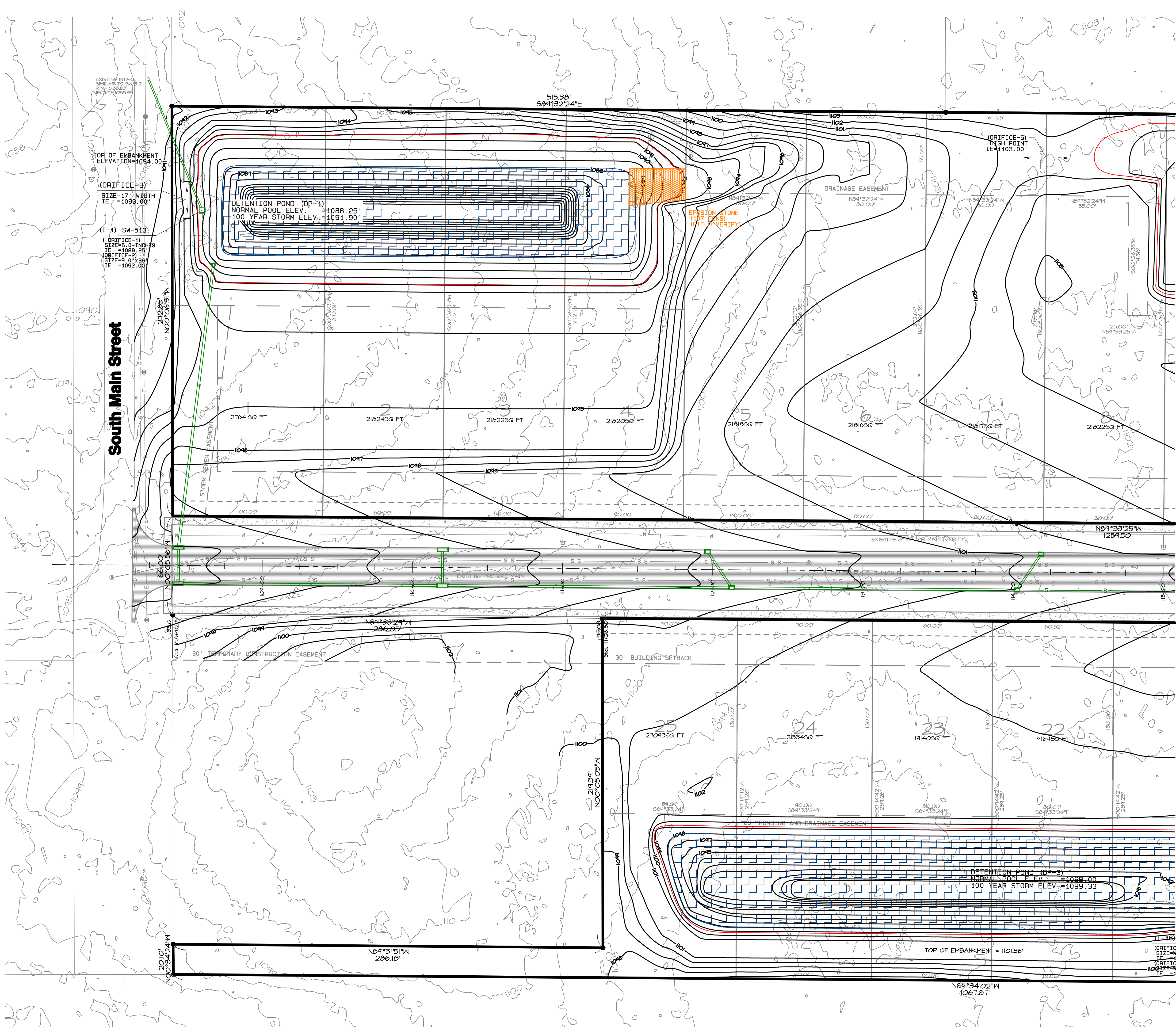
SITE LAYOUT

DATE PRINTED
Tue Jul 1, 2025
AEC #: 213613
SHEET 2

**ASSOCIATED ENGINEERING
COMPANY OF IOWA**
1520 NW BYRNDALE DRIVE, SUITE 102, ANKENY, IOWA 50023
Phone: (515) 255-3156 Fax: (515) 255-3157

REVISIONS

OWNER: THE ASSOCIATED ENGINEERS ASSOCIATION
PROJECT MANAGER: YOUNG PROPERTY



DETENTION POND (DP1)	
(I-1) SW-513	= 1000.25'
RIM	= 999.00'
OPENING(S)	= 994.25'
ORIFICE(S)	= 992.00'
ORIFICE(1)	= 992.00'
PRIMARY OUTLET (MULTI-STAGE OUTLET)	
ORIFICE#1	= 992.00'
DIAMETER	= 7.0-INCHES
ORIFICE#2	= 994.25'
DIAMETER	= WIDTH 22.00" HEIGHT 8.00"
ORIFICE#3	= 999.00'
DIAMETER	= 36" X 9" (4 OPENINGS)
TOP OF BERM ELEVATION = 1000.00'	
(O-1) ELEVATION	= 985.50'
HEIGHT OF BERM	= 14.50'
NORMAL POOL ELEVATION	= 992.00'
EMERGENCY OUTLET	= 999.00'
BOTTOM OF POND ELEVATION	= 976.00'
PRINCIPAL SPILLWAY = 2.14 ACRE-FEET	
100-YEAR EVENT	= 10 ACRE-FEET
EMERGENCY SPILLWAY	= 12.27 ACRE-FEET
TOP OF DAM	= 976.00'

South Main Street

EXISTING INTAKE SIMILAR TO SW-513 RIM=1000.25' HEIGHT=1008.49'
 TOP OF EMBANKMENT ELEVATION=1094.00'
 (ORIFICE-3) SIZE=17" WIDTH IE =1093.00'
 (I-1) SW-513 (ORIFICE-1) SIZE=6.0-INCHES IE =1088.25' (ORIFICE-2) SIZE=8.0-INCHES IE =1092.00'

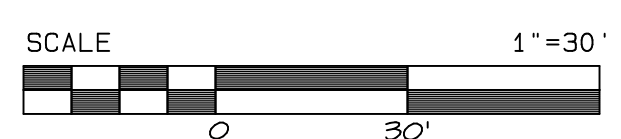
DETENTION POND (DP-1)
 NORMAL POOL ELEV. = 1088.25'
 100 YEAR STORM ELEV. = 1091.90'

EROSION STONE (FIELD VERIFY)

(ORIFICE-5) HIGH POINT IE=1103.00'

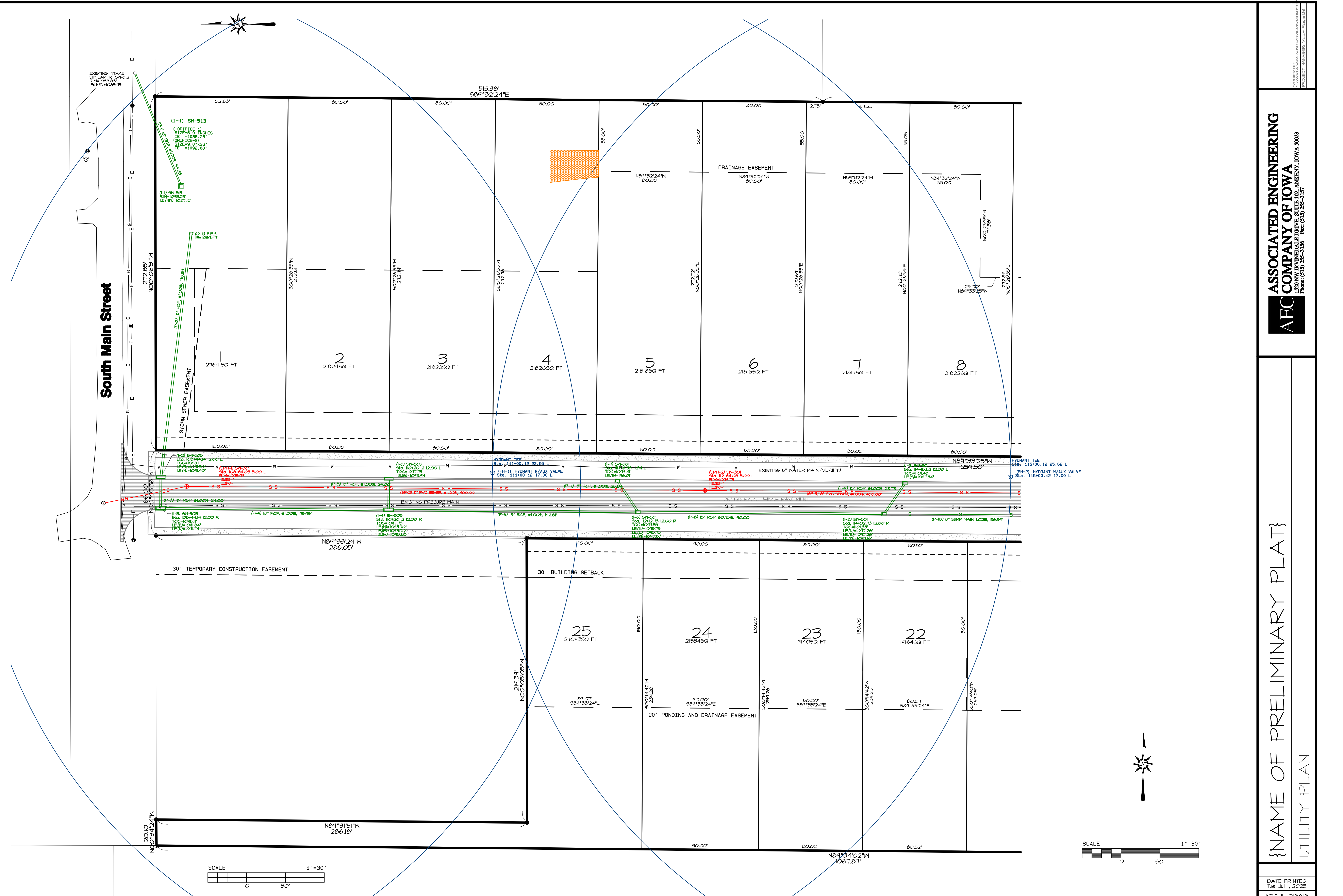
DETENTION POND (DP-3)
 NORMAL POOL ELEV. = 1098.00'
 100 YEAR STORM ELEV. = 1099.33'

(I-14) SW-513 (ORIFICE-6) SIZE=36" X 16" IE =1088.00' (ORIFICE-7) SIZE=36" X 16" IE =1089.50'



ASSOCIATED ENGINEERING
 AEC COMPANY OF IOWA
 1500 NW BYRNDALE DRIVE, SUITE 102, ANKENY, IOWA, 50003
 Phone: (515) 255-3156 Fax: (515) 255-3157

{NAME OF PRELIMINARY PLAT}
 GRADING PLAN



South Main Street

EXISTING INTAKE
SIMILAR TO SW-512
RIM=1088.83'
ELEV=1088.83'

(I-1) SW-513
(I-1) SW-513
RIM=1088.83'
ELEV=1088.83'

(C-1) P.E.S.
ELEV=1084.44'

276415Q FT

218245Q FT

218225Q FT

218205Q FT

218185Q FT

218165Q FT

218145Q FT

218125Q FT

25
217093Q FT

24
215345Q FT

23
191405Q FT

22
191645Q FT

SCALE 1"=30'

SCALE 1"=30'

