



# Secluded 45± Acre Illinois Hunting Tract for Sale - Coles County

**T R O P H Y**  
PROPERTIES AND AUCTION  
LAND | RECREATIONAL | RESIDENTIAL

www.TrophyPA.com • (855) 573-5263 • leads@trophyapa.com



**PROPERTY ADDRESS:**

00 County Road 300 N  
Westfield, IL 62474

**PRICE:** \$220,500

**ACRES:** 45

**COUNTY:** Coles

**PROPERTY HIGHLIGHTS:**

- Located at end of dead end road.
- Mature white oak and red oak
- 3 food plots
- Full of big deer
- Creek
- Possible home or cabin sites
- Possible pond or lake sites
- 3 hrs. from Chicago
- 2 hrs. from St. Louis

**PROPERTY DESCRIPTION:**

If you are looking for a secluded 45± acres at the end of dead end road, this is the one. There are 3 established food plots with fruits trees planted with a number different stand locations. The timber consists of mature White Oak, Red Oak and more. There are some great possible home or cabin locations and electric not too far away. The property has a creek that runs through the middle of it and there a couple drainages that could possibly be damned up for a possible pond or nice sized lake. The hunting in this area is outstanding with a history of Boone and Crocket deer. I personally have killed 2 bucks over 170 and 1 over 165 only about 4 miles away from the 45 acres. Charleston is a great town only 12-15 min away with restaurants and stores.



**PRESENTED BY:**

**SHANE YEARIAN**

**Land Specialist - IL**

M: (618) 830-2825

P: (855) 573-5263 x710

E: syearian@trophyapa.com

**Trophy Properties and Auction**

15480 Clayton Road

Suite 101

Ballwin, MO 63011

www.Trophyapa.com

leads@trophyapa.com

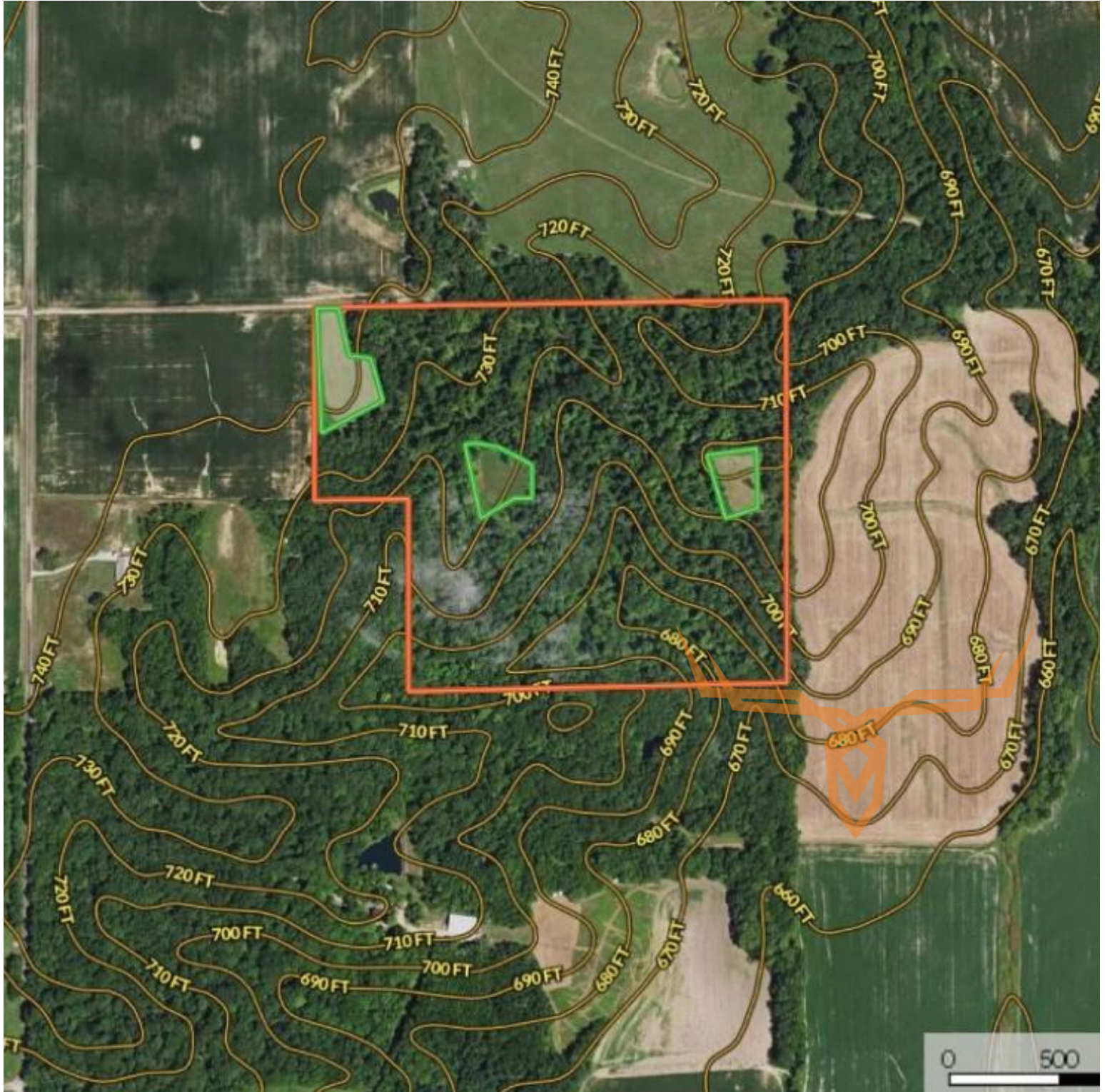




# Secluded 45± Acre Illinois Hunting Tract for Sale - Coles County

**T R O P H Y**  
PROPERTIES AND AUCTION  
LAND | RECREATIONAL | RESIDENTIAL

[www.TrophyPA.com](http://www.TrophyPA.com) • (855) 573-5263 • [leads@trophyPA.com](mailto:leads@trophyPA.com)



Broker does not guarantee the accuracy of sq. ft., lot size, or other information, buyer is advised to independently verify the accuracy of information through personal inspection and with appropriate professionals