



Boguefala Creek Tract

On Palmer Road, Itawamba County, MS

+/- 124.2 Acres

Timberland / Hunting / Recreation / Residential

\$273,152.00

P. O. Box 600

Gordo, AL 35466

205-364-7145

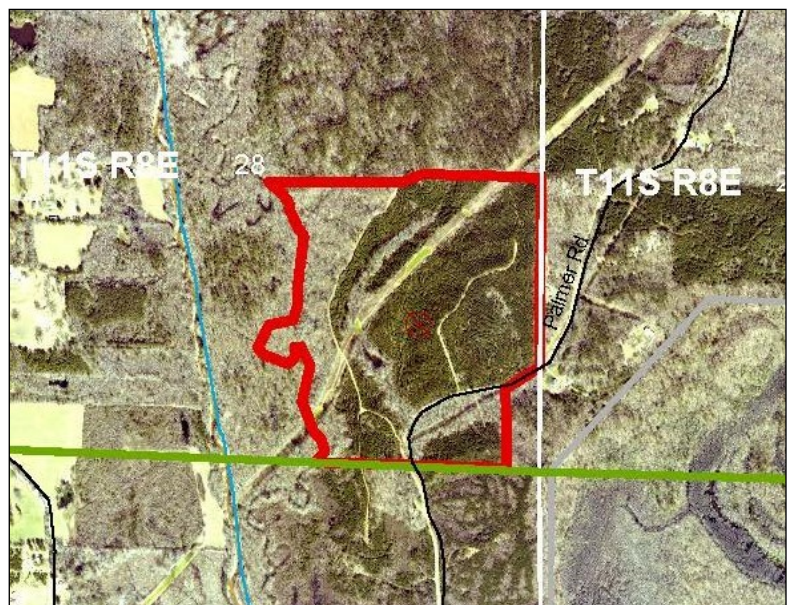
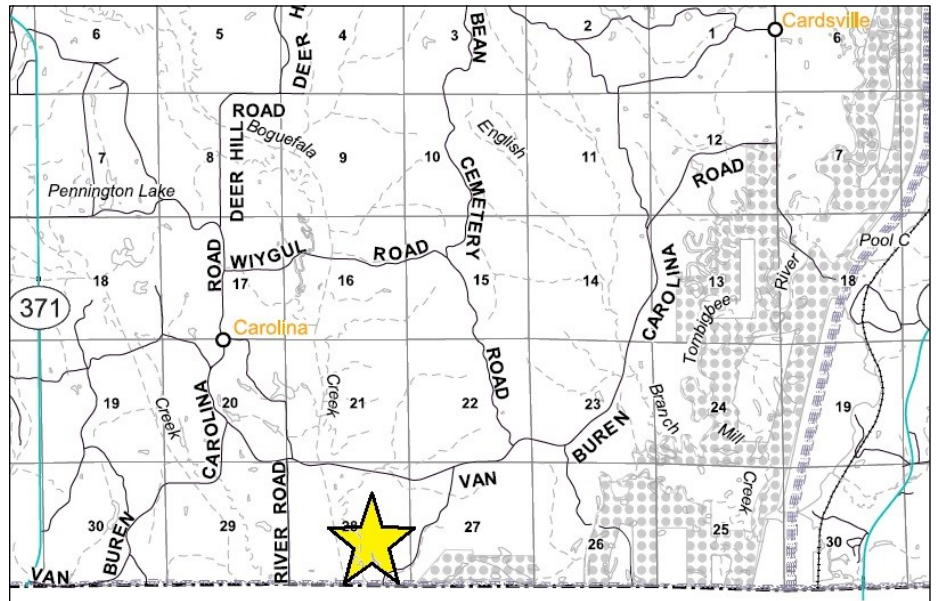
Dale Lancaster, Broker

Section 28, Township 11 South, Range 8 East

34.0924 -88.4497

For more info: www.midsouthforestry.com

Explore the ultimate outdoor escape with this 124.2 +/- acres of timberland in Itawamba County, MS. Conveniently located on Palmer Road, you're just 14 miles from Amory, 15 miles from Nettleton, and 24 miles from Tupelo, making access a breeze. This property features approximately 77 +/- acres of pine plantation established in 2016, complemented by hardwoods along a tributary of Boguefala Creek. A gas transmission line crosses the tract, enhancing its value with existing wildlife food plots. With abundant hunting opportunities for deer, turkey, and small game, plus a natural slough/pond area, it's a hunter's dream. Whether you're looking to invest in timber or build your ideal hunting camp, this land offers the perfect canvas for your adventures!



All information furnished is assumed to be accurate and correct. However, neither the property owner nor Midsouth Forestry Services warrant the accuracy of information furnished. Prospective buyers should satisfy themselves as to the accuracy of this information. No representation or warranties are expressed or implied as to the property, its condition, boundaries, access, acres, zoning, condition of title or fair market value.

Rev. 022425