

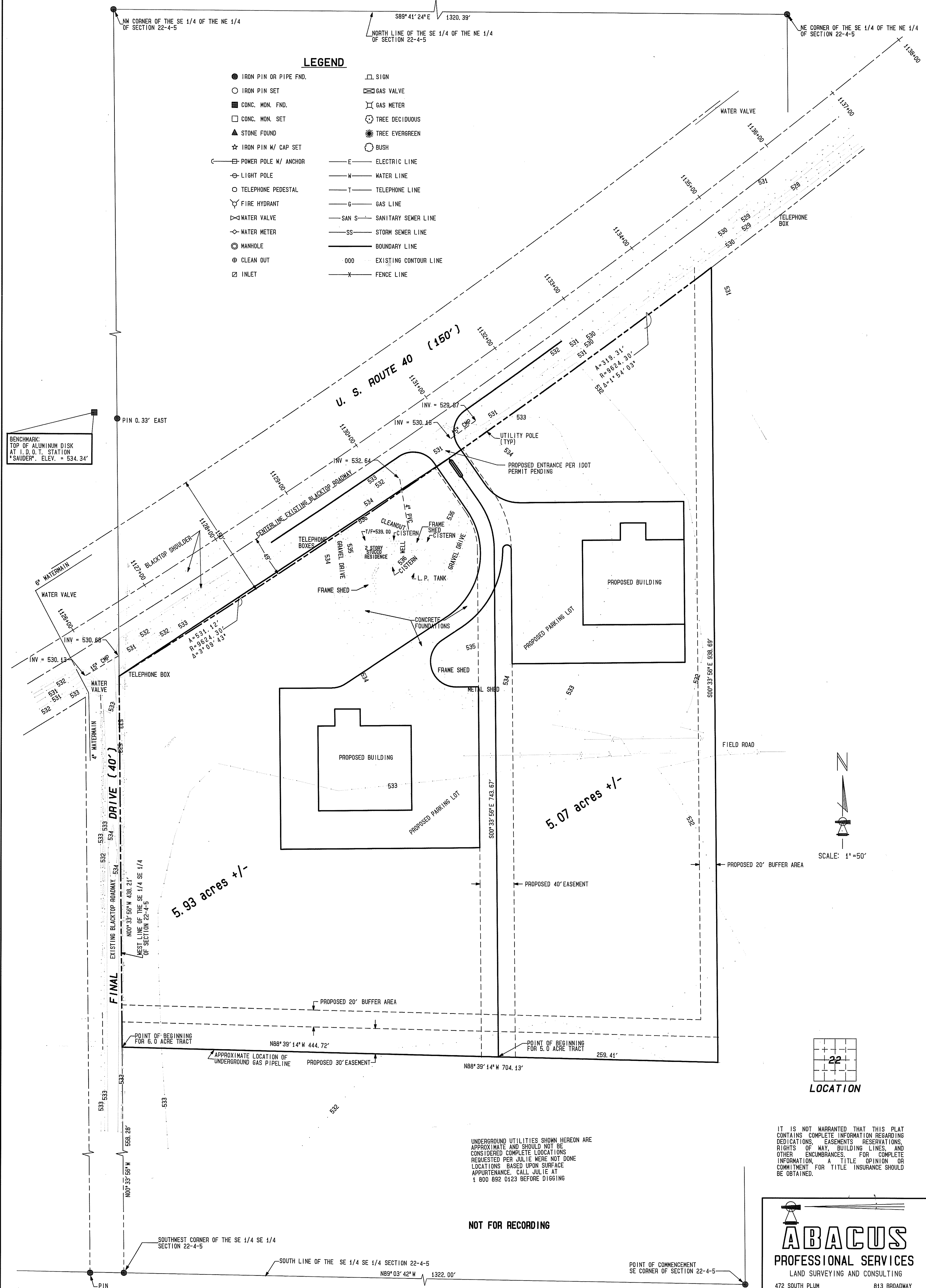
PRELIMINARY LAYOUT

FOR JERRY LAGER AND FRANCIS REHKEMPER
 PART OF THE SOUTHEAST QUARTER
 OF THE SOUTHEAST QUARTER
 SECTION 22, T 4 N, R 5 W, 3RD P. M.
 MADISON COUNTY, ILLINOIS.

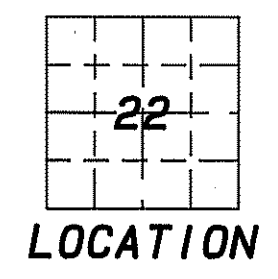
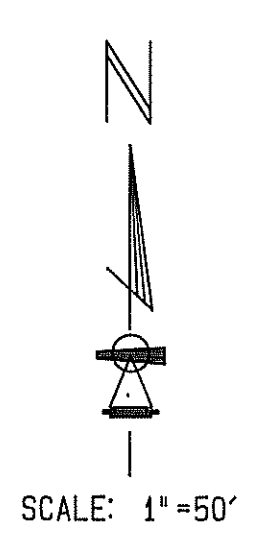
2156
 PRELIM. LAYOUT

LEGEND

- | | |
|-------------------------|-------------------------------|
| ● IRON PIN OR PIPE FND. | □ SIGN |
| ○ IRON PIN SET | ⊗ GAS VALVE |
| ■ CONC. MON. FND. | ⊗ GAS METER |
| □ CONC. MON. SET | ⊗ TREE DECIDUOUS |
| ▲ STONE FOUND | ⊗ TREE EVERGREEN |
| ☆ IRON PIN W/ CAP SET | ○ BUSH |
| ⊖ POWER POLE W/ ANCHOR | — E ELECTRIC LINE |
| ⊖ LIGHT POLE | — W WATER LINE |
| ○ TELEPHONE PEDESTAL | — T TELEPHONE LINE |
| ⊗ FIRE HYDRANT | — G GAS LINE |
| ⊗ WATER VALVE | — SAN S SANITARY SEWER LINE |
| ⊗ WATER METER | — SS STORM SEWER LINE |
| ⊗ MANHOLE | — BOUNDARY LINE |
| ⊗ CLEAN OUT | --- 000 EXISTING CONTOUR LINE |
| ⊗ INLET | — X FENCE LINE |



BENCHMARK:
 TOP OF ALUMINUM DISK
 AT I. D. O. T. STATION
 "SAUDER", ELEV. = 534.34'



UNDERGROUND UTILITIES SHOWN HEREON ARE APPROXIMATE AND SHOULD NOT BE CONSIDERED COMPLETE LOCATIONS REQUESTED PER JULIE WERE NOT DONE LOCATIONS BASED UPON SURFACE APPURTENANCE. CALL JULIE AT 1 800 892 0123 BEFORE DIGGING

NOT FOR RECORDING

IT IS NOT WARRANTED THAT THIS PLAT CONTAINS COMPLETE INFORMATION REGARDING DEDICATIONS, EASEMENTS, RESERVATIONS, RIGHTS OF WAY, BUILDING LINES, AND OTHER ENCUMBRANCES. FOR COMPLETE INFORMATION, A TITLE OPINION OR COMMITMENT FOR TITLE INSURANCE SHOULD BE OBTAINED.

ABACUS
 PROFESSIONAL SERVICES
 LAND SURVEYING AND CONSULTING

472 SOUTH PLUM BREESE, IL 62230 813 BROADWAY HIGHLAND, IL 62249
 (618) 526-4277 (618) 654-4161
 (618) 526-2576 FAX FAX (618) 654-7999

01-06-98 RGB 2156-S-98