

Hunting Tract

32.9± Acres in Covington County, MS



\$85,000

This 32.9± acre recreational tract in Covington County, MS, is conveniently accessible from Highway 84. Over several years, the land has undergone natural regeneration, forming excellent wildlife bedding spots. It also features multiple areas suitable for food plots and is intersected by two right-of-ways for power and pipelines, making deer spotting hassle-free. With water and electricity nearby and road frontage along Hwy 84, this property offers development potential. Contact Mike Odom to schedule a tour today!

Directions from Hwy 49 and Hwy 84 in Collins, MS: Turn west onto Highway 84 and travel 9.1 miles. Turn right onto Ethel Road. After .2 miles, the property will be on the right. [GOOGLE MAP LINK](#)



MIKE ODOM
REALTOR®

Office: 601.898.2772
Cell: 601.927.5018
MikeOdom@TomSmithLand.com



A Real Estate Expert You Can Trust
TomSmithLandandHomes.com

Information is believed to be accurate but not guaranteed.





MIKE ODOM
 REALTOR®
 Office: 601.898.2772
 Cell: 601.927.5018
 MikeOdom@TomSmithLand.com



A Real Estate Expert You Can Trust
 TomSmithLandandHomes.com

Information is believed to be accurate but not guaranteed.



Aerial Map



[Click Here for an Interactive Map](#)

MIKE ODOM
REALTOR®
Office: 601.898.2772
Cell: 601.927.5018
MikeOdom@TomSmithLand.com

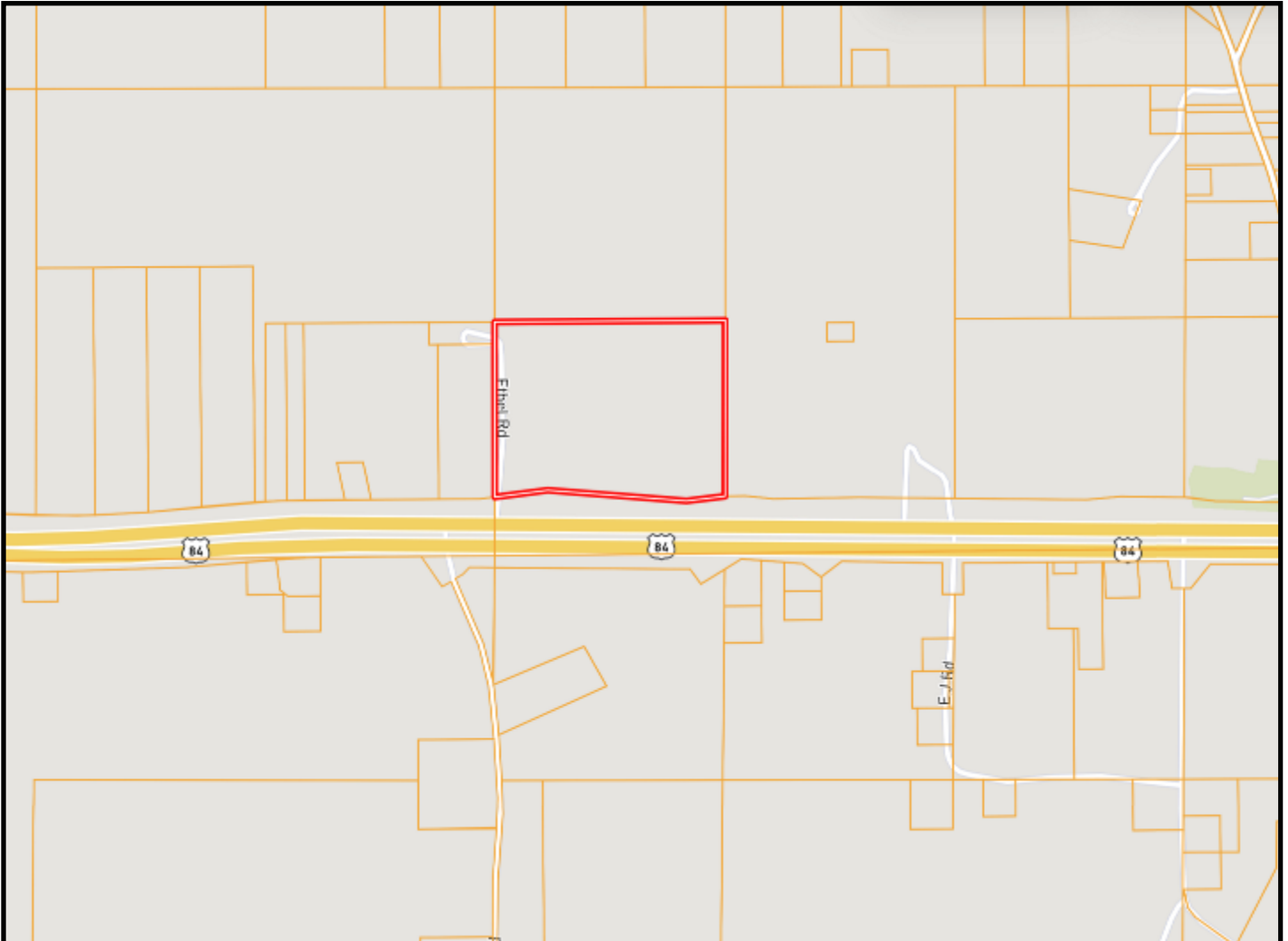


A Real Estate Expert You Can Trust
TomSmithLandandHomes.com

Information is believed to be accurate but not guaranteed.



Ownership Map



MIKE ODOM
REALTOR®
Office: 601.898.2772
Cell: 601.927.5018
MikeOdom@TomSmithLand.com



A Real Estate Expert You Can Trust
TomSmithLandandHomes.com

Information is believed to be accurate but not guaranteed.



Soil Map



SOIL CODE	SOIL DESCRIPTION	ACRES	%	CPI	NCCPI	CAP
RsB2	Ruston fine sandy loam, 2 to 5 percent slopes, moderately eroded	11.75	38.98	0	57	2e
RsE2	Ruston fine sandy loam, 12 to 17 percent slopes, eroded (smithdale)	8.46	28.07	0	50	6e
RsE	Ruston fine sandy loam, 12 to 17 percent slopes (smithdale)	6.32	20.97	0	53	6e
OrB	Ora fine sandy loam, 2 to 5 percent slopes	2.53	8.39	0	50	2e
RsD2	Ruston fine sandy loam, 8 to 12 percent slopes, eroded (smithdale)	1.08	3.58	0	53	4e

MIKE ODOM
 REALTOR®
 Office: 601.898.2772
 Cell: 601.927.5018
 MikeOdom@TomSmithLand.com

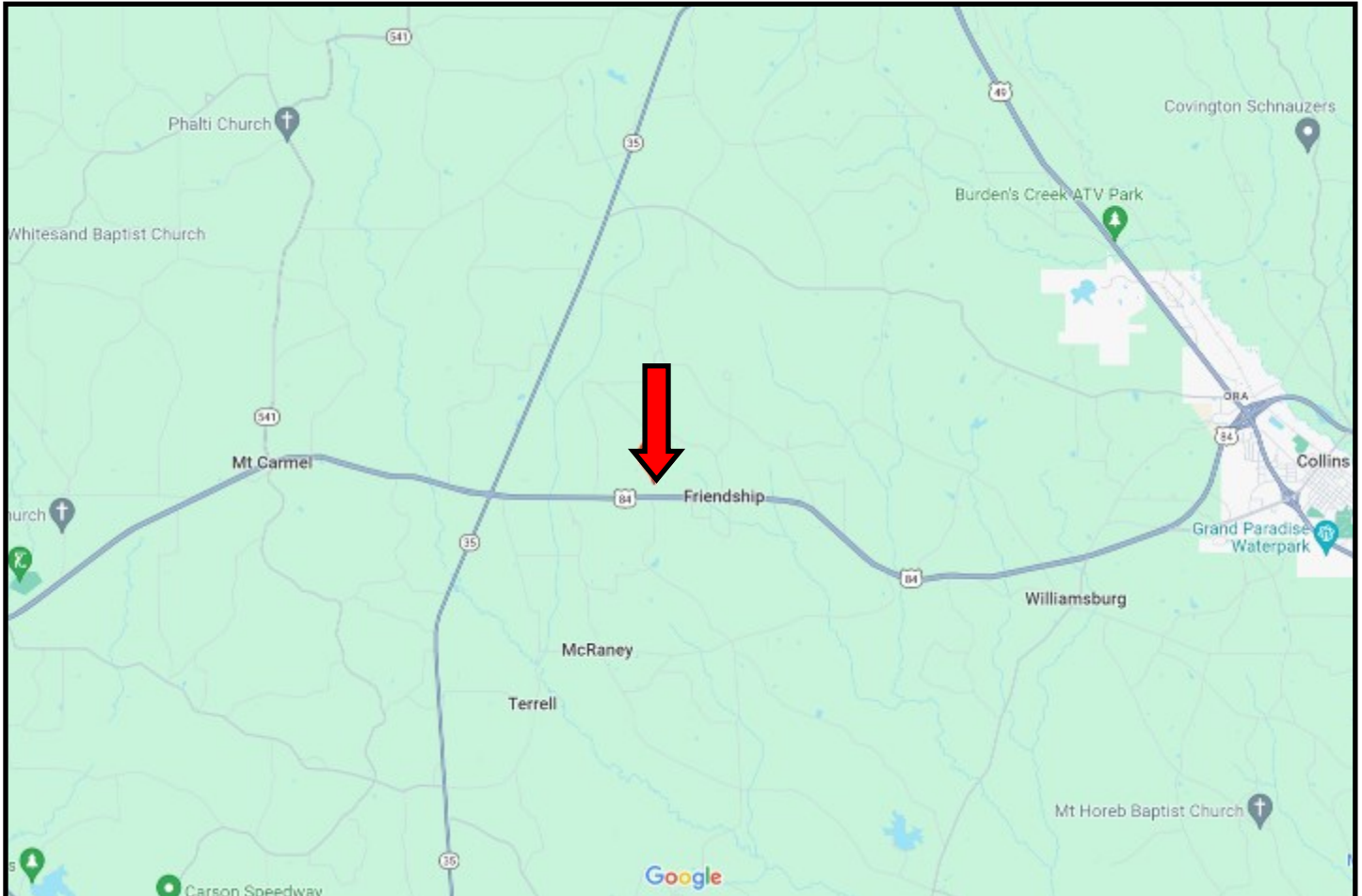


A Real Estate Expert You Can Trust
 TomSmithLandandHomes.com

Information is believed to be accurate but not guaranteed.



Directional Map



Directions from Hwy 49 and Hwy 84 in Collins, MS: Turn west onto Highway 84 and travel 9.1 miles. Turn right onto Ethel Road. After .2 miles, the property will be on the right. [GOOGLE MAP LINK](#)



MIKE ODOM
REALTOR®
Office: 601.898.2772
Cell: 601.927.5018
MikeOdom@TomSmithLand.com



A Real Estate Expert You Can Trust
TomSmithLandandHomes.com

Information is believed to be accurate but not guaranteed.

