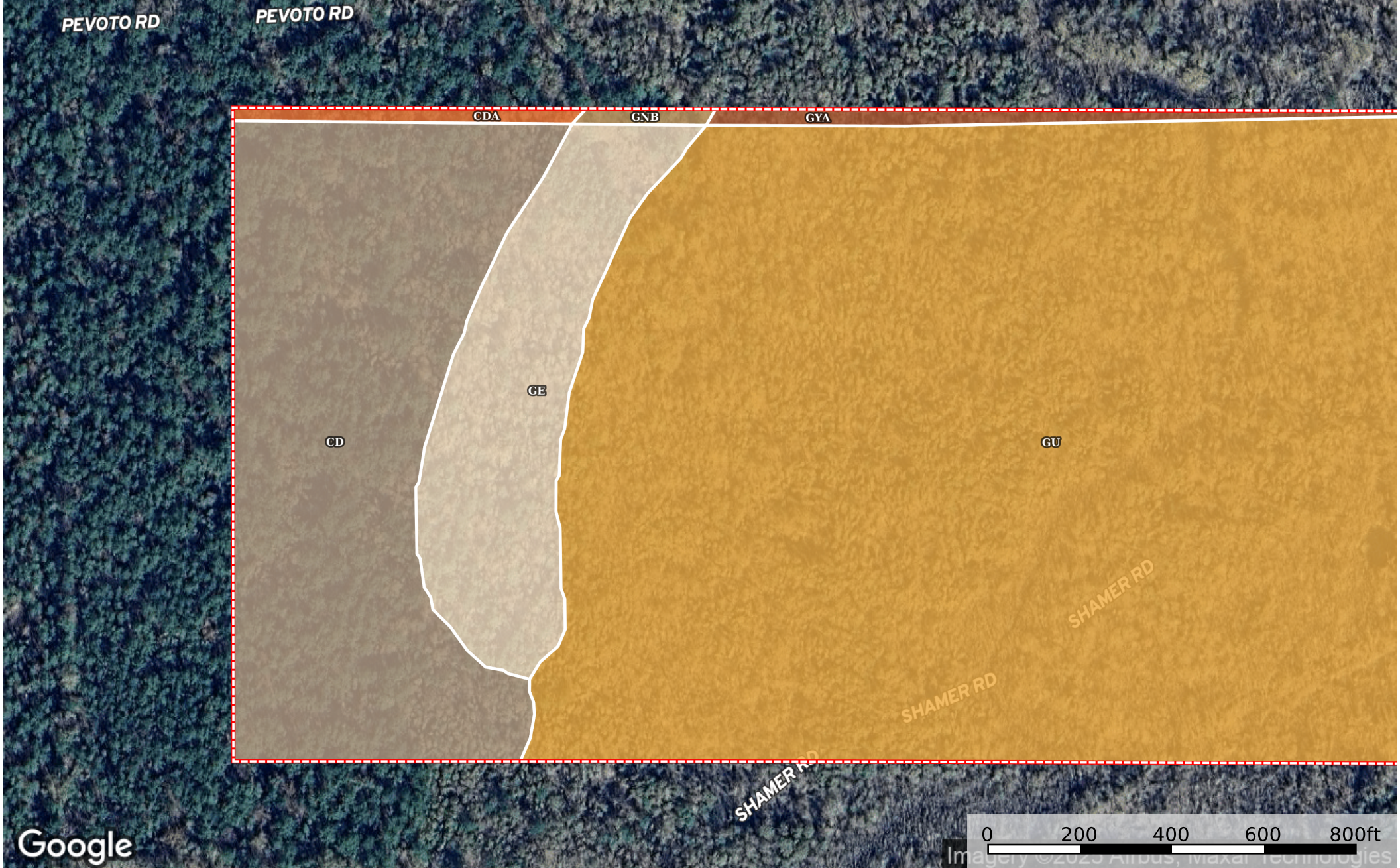



Pevoto Road Tract, Calcasieu Parish, 83 Acres

Calcasieu Parish, Louisiana, 83 AC +/-



Google

 Boundary

 Boundary 86.45 ac

SOIL CODE	SOIL DESCRIPTION	ACRES	%	CPI	NCCPI	CAP
GU	Guyton and Bienville soils frequently flooded	60.55	70.05	0	42	5w
Cd	Caddo-Messer complex, 0 to 1 percent slopes	16.75	19.38	0	60	3w
Ge	Glenmora silt loam, 1 to 3 percent slopes	7.41	8.57	0	77	2e
GYA	Guyton-Ouachita complex, 0 to 1 percent slopes, frequently flooded	0.97	1.12	0	31	5w
CdA	Caddo-Messer complex, 0 to 1 percent slopes	0.54	0.62	0	60	3w
GnB	Glenmora silt loam, 1 to 3 percent slopes	0.23	0.27	0	77	2e
TOTALS		86.45(*)	100%	-	48.58	4.33

(*) Total acres may differ in the second decimal compared to the sum of each acreage soil. This is due to a round error because we only show the acres of each soil with two decimal.

