

# RED SHED RANCH

279± ACRES | LAMAR COUNTY, TEXAS



TEXAS RANCH SALES, LLC  
830.741.8906  
Info@TexasRanchSalesLLC.com  
TexasRanchSales.com

ESTD **TRS** 2000  
TEXAS RANCH SALES  
• TEXAS IS OUR BRAND •



Red Shed Ranch combines luxury living with extensive recreational and agricultural amenities, making it a versatile property suited for family retreats, animal breeding, or farming operations. This unique property provides both high-end accommodations and well-maintained facilities for animal care and agriculture. Whether for a private residence or commercial ventures, this ranch stands out as a rare opportunity in North Texas.

# RED SHED RANCH

279± ACRES | LAMAR COUNTY, TEXAS



- HONEY GROVE, TEXAS
- PARTIALLY HIGH FENCED & CROSS FENCED
- 5BR/5.5BA MAIN HOME WITH AN INDOOR POOL
- 3BR/3BA BARNDOMINIUM
- 3,300± SQ/FT BARN WITH STABLES
- 3,950± SQ/FT DOG KENNEL BUILDING WITH A LOBBY, OFFICE, STORAGE, & FOOD PREP AREA
- 4,125± SQ/FT BARN WITH A LOBBY & KITCHEN
- COVERED WORKING PENS & HYDRAULIC CHUTE
- SEVERAL FEED, HAY, & LOAFING SHEDS
- 6.5 ACRE LAKE WITH A COVERED DOCK
- 6 PONDS & 1.25± MILES OF SANDERS CREEK
- STOCKED WITH EXOTICS
- USDA ACCREDITED RANCH
- FRONTAGE ON CR 36120 & FM 38



SCAN TO VIEW WEBSITE



SCAN TO VIEW WATCH VIDEO



# MAIN HOME









# MOTHER-IN-LAW SUITE





# BARNDOMINIUM





# EXOTIC WILDLIFE

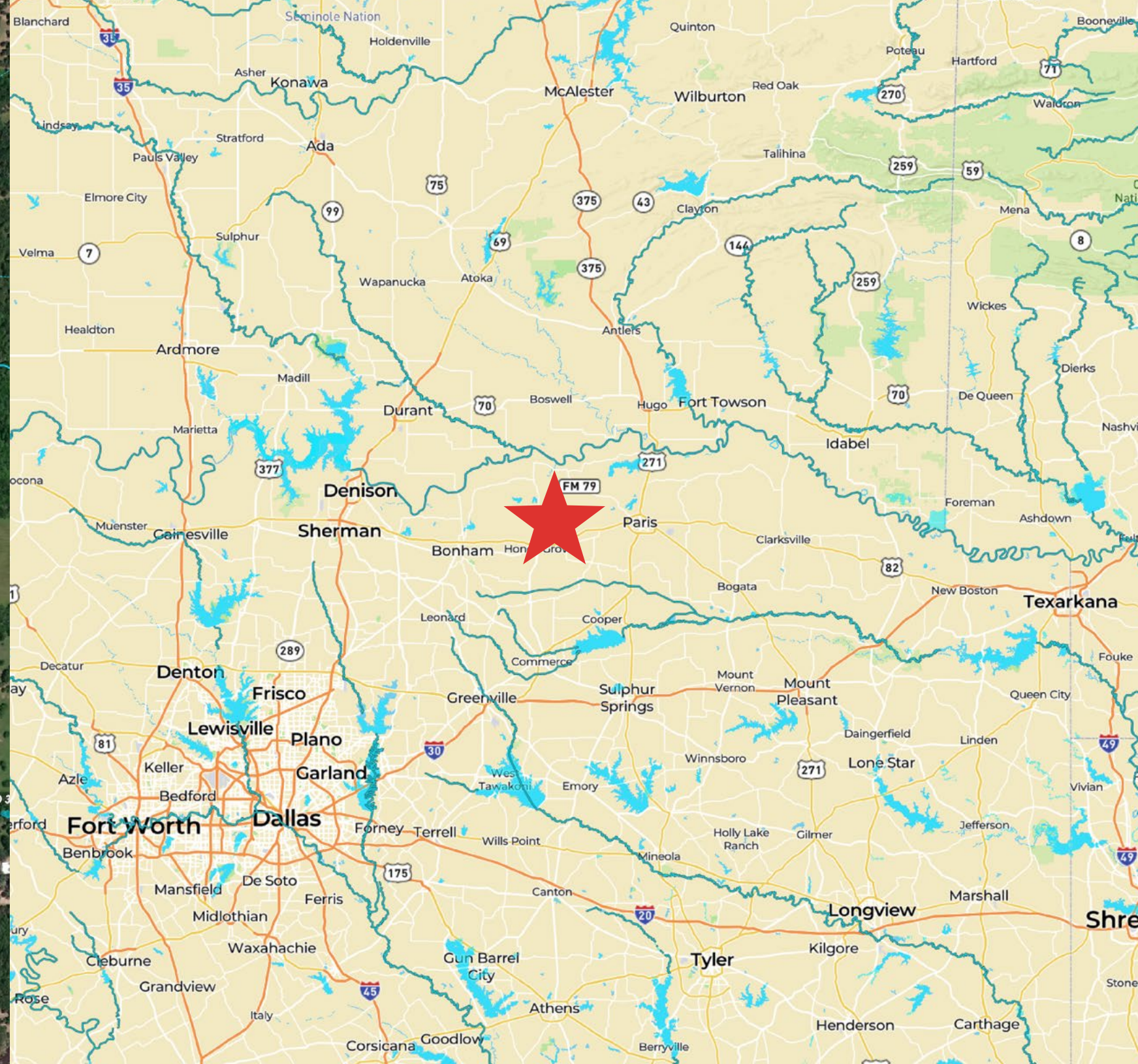
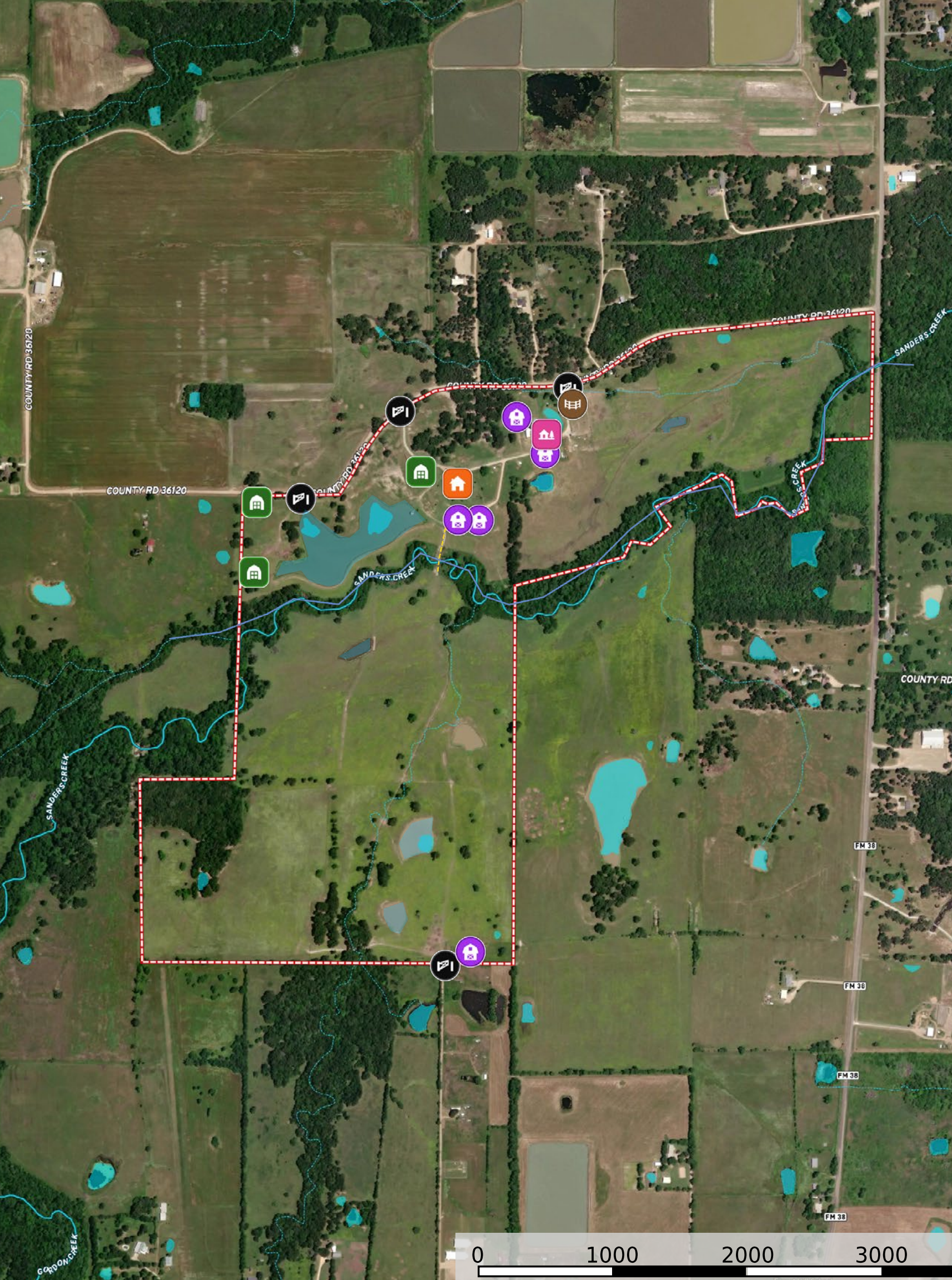




# WATER







Ahrens Ranch & Wildlife,  
providing Texas landowners  
and potential buyers ranch  
management services, wildlife  
consulting, exotic game  
management, and professional  
commercial hunting.

432-386-7477  
[www.ahrensranchandwildlife.com](http://www.ahrensranchandwildlife.com)











MIKE FORD

214.802.4184

MFord@TexasRanchSalesLLC.com



MELANIE WHITEMORE

214.864.4364

MWhittemore@TexasRanchSalesLLC.com



TEXASRANCHSALES.COM

830.741.8906


Shown by appointment only with Texas Ranch Sales, LLC. Buyers brokers must be identified on first contact and must accompany buying prospect on first showing to be allowed full fee participation. If this condition is not met, fee participation will be at the sole discretion of Texas Ranch Sales, LLC.

# Ranch. financing made simple



**FINANCING SOLUTIONS FOR:**

Rural Land  
Residential Home  
Operating Capital  
Farm & Ranch  
Livestock & Equipment  
Land Improvements  
Agribusiness

 NMLS493828 | 877.944.5500 | [capitalfarmcredit.com](http://capitalfarmcredit.com)

Disclaimer: Although the Broker or Agent has used reasonable care in obtaining data, this material is submitted without representation, warranty, or guarantees, and is subject to errors and omissions. Moreover, all information is subject to changes by the owner as to price or terms, to prior lease, to withdrawal of the property from the market, and to other events beyond the control of the Broker.