

**Moyers Ranch Retreat – Remodeled Home, Creek, Pond  
& Usable Land**  
414001 E 1855 Rd  
Moyers, OK 74557

**\$484,000**  
46.3± Acres  
Pushmataha County



**Moyers Ranch Retreat – Remodeled Home, Creek, Pond & Usable Land**  
**Moyers, OK / Pushmataha County**

---

**SUMMARY**

**Address**

414001 E 1855 Rd

**City, State Zip**

Moyers, OK 74557

**County**

Pushmataha County

**Type**

Farms, Horse Property, Single Family, Hunting Land, Ranches, Recreational Land, Residential Property

**Latitude / Longitude**

34.327308 / -95.661545

**Dwelling Square Feet**

2,060

**Bedrooms / Bathrooms**

3 / 2

**Acreage**

46.3

**Price**

\$484,000

**Property Website**

<https://1776-landcompany.com/property/moyers-ranch-retreat-remodeled-home-creek-pond-usable-land/pushmataha/oklahoma/101673/>



## **Moyers Ranch Retreat – Remodeled Home, Creek, Pond & Usable Land Moyers, OK / Pushmataha County**

---

### **PROPERTY DESCRIPTION**

#### **Moyers Ranch Retreat - Remodeled Home, Creek, Pond & Usable Land**

Fully remodeled country home on well-balanced acreage with pasture, timber, and water-set up for livestock, recreation, or a private rural lifestyle. Properties like this are hard to find with this combination of usable land, improvements, and location this close to town.

This 3 bed, 2 bath home has been thoughtfully updated with fresh interior paint, new flooring, and an inviting, move-in-ready layout. A durable metal roof adds long-term value, while the updates throughout give the home a clean, modern feel without losing its country charm.

The property is already set up for functionality with multiple outbuildings in place, including a barn, chicken coop, and two 40' storage containers with a covered roof structure-ideal for equipment storage, feed, or a workshop setup.

The land is a strong mix of improved pasture and mature oak timber, giving you flexibility whether you're running cattle, keeping horses, putting in a small crop operation, or simply enjoying the recreational side. The acreage is fenced and features a pond and seasonal creek, while a hunting cabin/blind tucked toward the back creates a turnkey setup for deer hunting.

You get the best of both worlds here-peaceful country living with modern conveniences including paved road access, a private water well, and fiber internet availability. Located just a half mile from Moyers School and Highway 2, approximately 12 minutes to Antlers, and within 30 minutes of Sardis Lake, Hugo Lake, and McGee Creek Lake. All this within an easy drive from the Dallas-Fort Worth area.

---

### **Property Features**

- Fully remodeled 3 bed, 2 bath home
  - Metal roof
  - Barn + chicken coop
  - Two 40' storage containers with covered roof structure
  - Fenced and cross-functional acreage
  - Improved pasture + mature oak timber
  - Pond + seasonal creek
  - Hunting cabin/blind
  - Paved road access
  - Water well
  - Fiber internet available
- 

### **Location Highlights**

- ~ 1/2 mile to Moyers School & Hwy 2
- ~12 minutes to Antlers, OK
- ~30 minutes to Sardis Lake, Hugo Lake & McGee Creek Lake
- ~2.5 hours to Dallas-Fort Worth

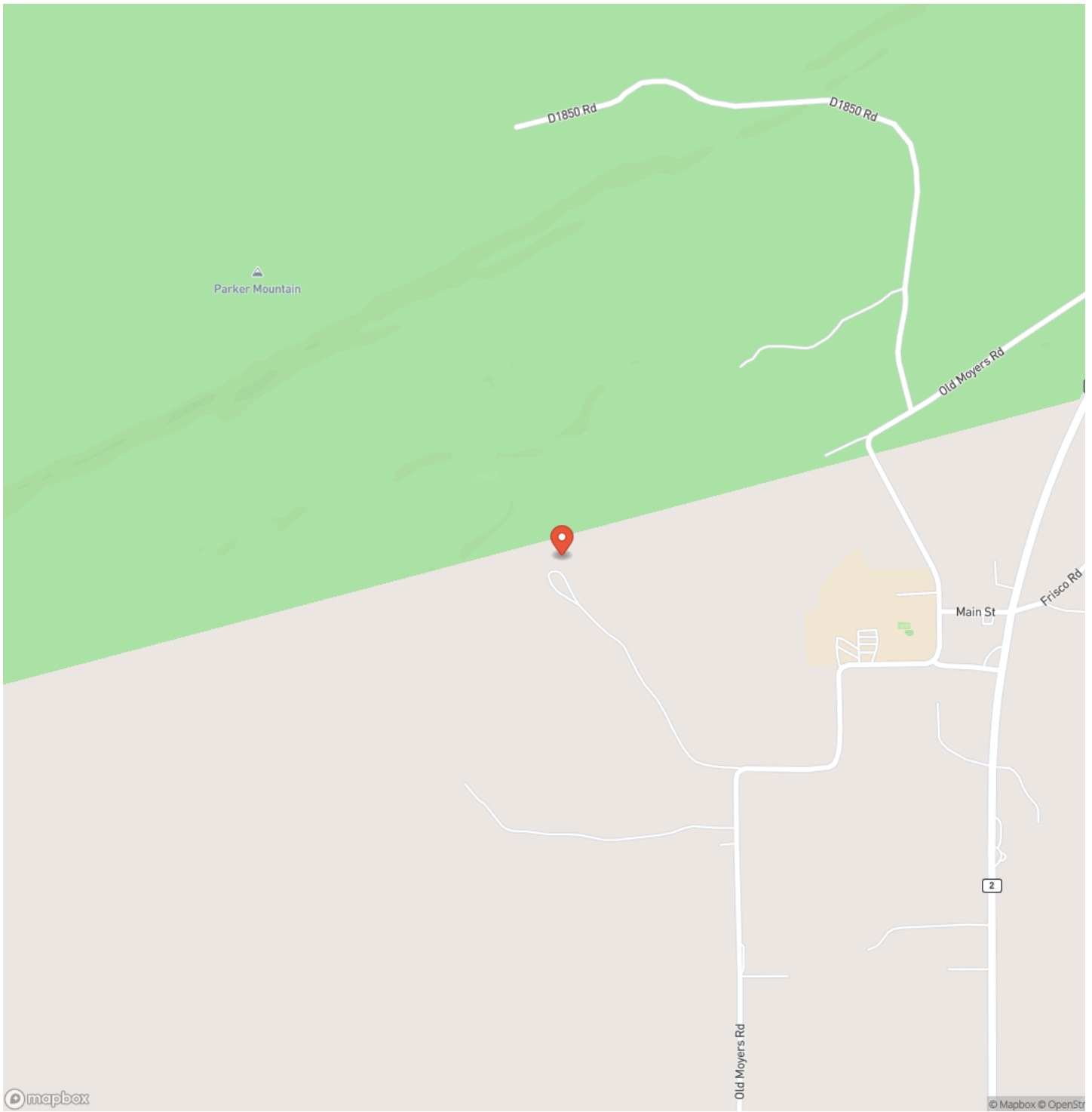
This property offers a rare combination of **livestock capability, hunting potential, and modern rural living**-all in one.

**Moyers Ranch Retreat – Remodeled Home, Creek, Pond & Usable Land**  
**Moyers, OK / Pushmataha County**

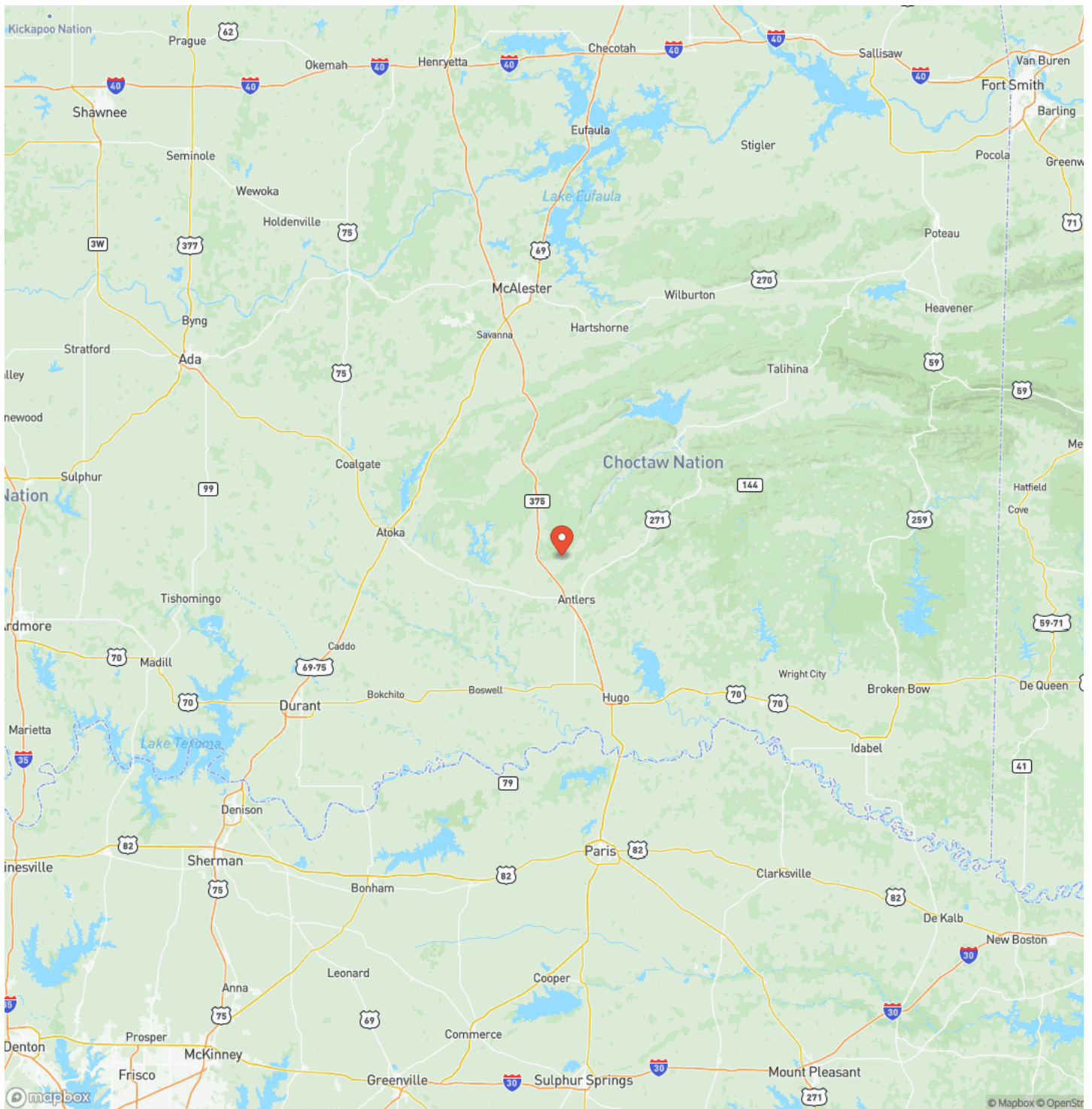
---



## Locator Map



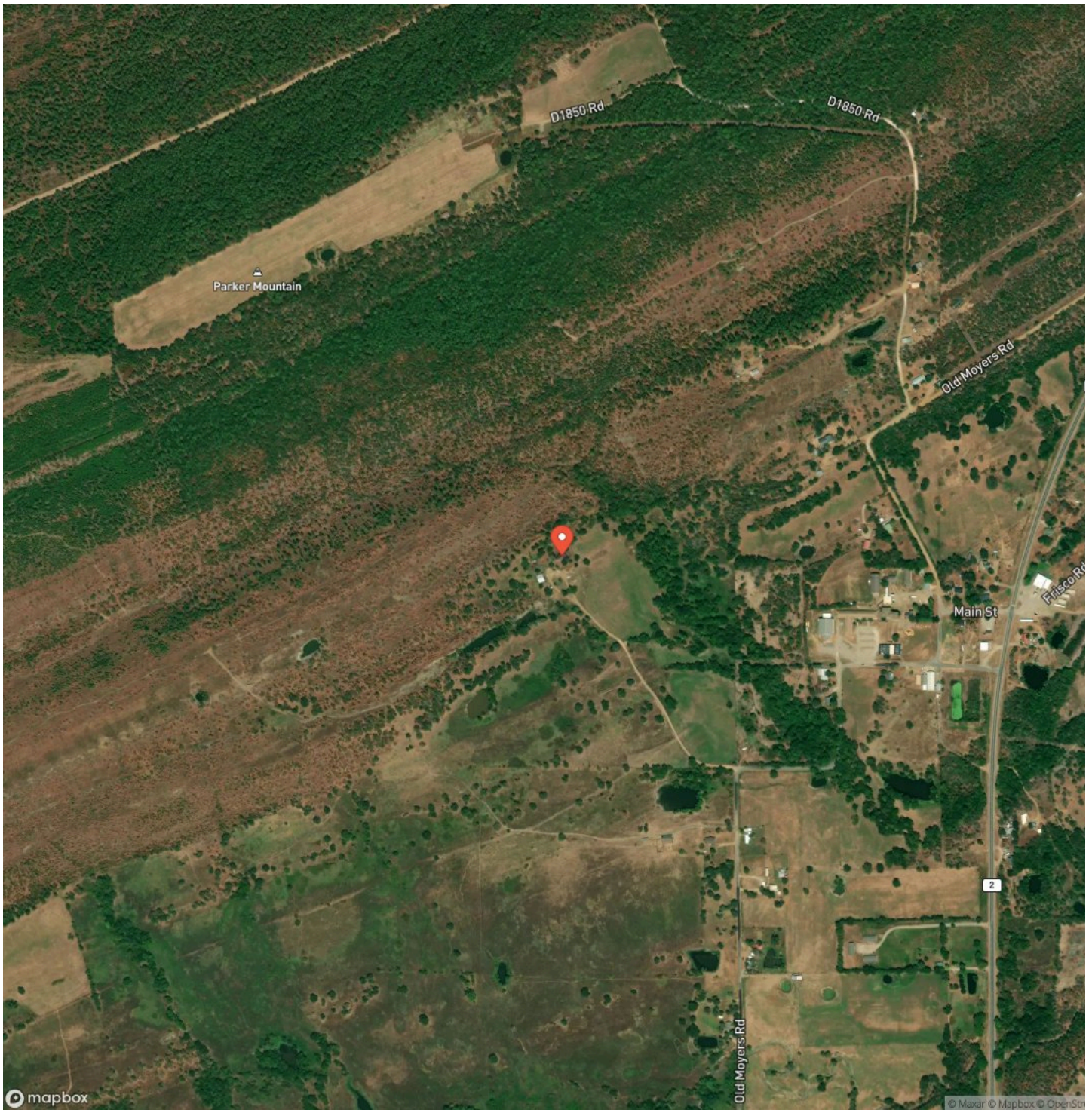
## Locator Map



**MORE INFO ONLINE:**

<https://1776-landcompany.com/>

## Satellite Map







## **DISCLAIMERS**

Information in this brochure is provided solely for information purposes and does not constitute an offer to sell or advertise real estate outside the states in which broker or agent licensed. The information presented has been obtained from sources deemed to be reliable, but is not guaranteed or warranted by the agent, broker, or the sellers of these properties. This offering is subject to errors, omissions, prior sale, price change, correction or withdrawal from the market without notice. All references to age, square footage, income, expenses, acreage, carrying capacity, and land classification, etc. are approximate. Prospective buyers are chargeable with and expected to conduct their own independent investigation of the information and the property and to rely only on those results. Sellers reserve the right to accept or reject any and all offers without liability to any buyer or cooperating broker.

Maps are provided for illustration purposes only, the accuracy is not warranted. Parcels on interactive maps are not adjusted to match aerial backgrounds. This information is for reference purposes only and is not a legal document. Data maps contain errors. The seller and seller's agent are making known to all potential buyers that there may be variations between the location of the existing fence lines and the legal description of the deeded property. Seller and seller's agent make no warranties with regard to the location of the fence lines in relationship to the deeded property lines, nor does the Seller make any warranties or representations with regard to the specific acreage contained within the fenced property lines. Seller is selling the property in an "as is" condition, which includes the location of the fences as they exist. Boundaries shown on the accompanying maps are approximate, based on county parcel data. The maps are not to scale. The accuracy of the maps is not guaranteed. Prospective buyers are encouraged to verify fence lines, deeded property lines and acreages using a licensed surveyor at their own expense.

---

**1776 Land Company - Powered by Fathom**  
10880 S 49th W Ave  
Sapulpa, OK 74066  
(918) 600-7509  
<https://1776-landcompany.com/>

---