



# **SMALLTOWN**

**HUNTING PROPERTIES  
& REAL ESTATE<sup>SM</sup>**

**13.4± ACRES**  
**QUITMAN COUNTY, MS**  
**\$64,900**



**OFFICE (662) 238-4077 | [WWW.SMALLTOWNPROPERTIES.COM](http://WWW.SMALLTOWNPROPERTIES.COM)**

# THE QUITMAN 13.4

## PROPERTY PROFILE

### LOCATION:

- Hood Road  
Marks, MS 38646
- Quitman County
- 5.5± Miles N of Crowder
- 7.6± Miles E of Marks
- 11.4± Miles N of the Coldwater  
River National Wildlife Refuge
- 14.5± Miles SW of Batesville
- 20± Miles NE of the O'Keefe  
Wildlife Management Area
- 27.8± Miles E of Clarksdale
- 40± Miles W of Oxford

### PROPERTY USE:

- Potential Home/Camp Site
- Investment

### PROPERTY INFORMATION:

- 13.4± Acres
- Homesite
- Mixed Timber
- Paved Road Frontage
- Utilities Nearby

### COORDINATES:

- 34.24595, -90.14612

### TAX INFORMATION:

- 2024 - \$80.24



**SMALLTOWN**  
HUNTING PROPERTIES  
& REAL ESTATE<sup>SM</sup>

**HUNTER ROBISON**

LAND SPECIALIST

C: 662-816-7987

O: 662-238-4077

[hrobison@smalltownproperties.com](mailto:hrobison@smalltownproperties.com)

50 CR 401 - Oxford, MS 38655

[smalltownproperties.com](http://smalltownproperties.com)

Information is believed to be accurate but not guaranteed.



# WELCOME TO THE QUITMAN 13.4

IF YOU'VE BEEN SEARCHING FOR A SMALL ACREAGE TRACT TO BUILD IN THE MISSISSIPPI DELTA, LOOK NO FURTHER. This 13.4± acre property is located on Hood Road less than six miles north of Crowder in Quitman County, MS, in a region known far and wide for its world-class duck hunting and trophy whitetail deer. From a location standpoint, you could build your new camp less than 20 miles from both Coldwater River National Wildlife Refuge and O'Keefe Wildlife Management Area, each known for their exceptional public land hunting.



**SMALLTOWN**  
HUNTING PROPERTIES  
& REAL ESTATE<sup>SM</sup>

**HUNTER ROBISON**

LAND SPECIALIST

C: 662-816-7987

O: 662-238-4077

[hrobison@smalltownproperties.com](mailto:hrobison@smalltownproperties.com)

50 CR 401 - Oxford, MS 38655

[smalltownproperties.com](http://smalltownproperties.com)

Information is believed to be accurate but not guaranteed.



# MORE ABOUT THE QUITMAN 13.4

This tract is convenient yet secluded and lies within the flood zone, but with minimal work, a homesite could be cleared, offering the potential for a weekend getaway or the perfect base camp for hunting season. Whether you're looking to set up a cabin, a camper, or a small camp house, this land is ideal and has the nearby utilities to support it. The land features a mix of mature and mid-aged timber, with a healthy stand of hardwoods and pines offering both habitat and shade for your future home/camp. This area has water supplied by both Enon Locke Station and Curtis Water Association, and electricity is provided by TVEPA.

This is a great opportunity for hunters, outdoorsmen, or anyone looking to invest in a small piece of Delta dirt with big potential.

**Call Hunter Robison for a private showing today!**



**SMALLTOWN**  
HUNTING PROPERTIES  
& REAL ESTATE<sup>SM</sup>

**HUNTER ROBISON**

LAND SPECIALIST

C: 662-816-7987

O: 662-238-4077

[hrobison@smalltownproperties.com](mailto:hrobison@smalltownproperties.com)

50 CR 401 - Oxford, MS 38655

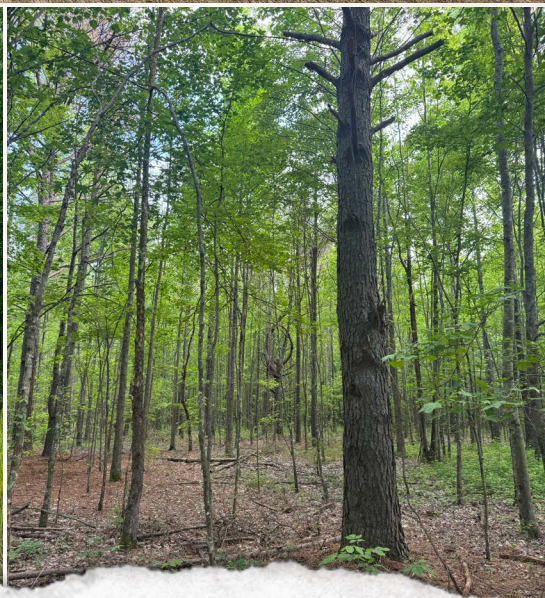
[smalltownproperties.com](http://smalltownproperties.com)

Information is believed to be accurate but not guaranteed.



**13.4± ACRES**

**QUITMAN COUNTY, MISSISSIPPI**



**SMALLTOWN**  
HUNTING PROPERTIES  
& REAL ESTATE<sup>SM</sup>

**HUNTER ROBISON**

*LAND SPECIALIST*

**C: 662-816-7987**

**O: 662-238-4077**

**[hrobison@smalltownproperties.com](mailto:hrobison@smalltownproperties.com)**

**50 CR 401 - Oxford, MS 38655**

**[smalltownproperties.com](http://smalltownproperties.com)**

*Information is believed to be accurate but not guaranteed.*



**13.4± ACRES**

**QUITMAN COUNTY, MISSISSIPPI**



**SMALLTOWN**  
HUNTING PROPERTIES  
& REAL ESTATE<sup>SM</sup>

**HUNTER ROBISON**

*LAND SPECIALIST*

**C: 662-816-7987**

**O: 662-238-4077**

**[hrobison@smalltownproperties.com](mailto:hrobison@smalltownproperties.com)**

**50 CR 401 - Oxford, MS 38655**

**[smalltownproperties.com](http://smalltownproperties.com)**

Information is believed to be accurate but not guaranteed.



13.4± ACRES

QUITMAN COUNTY, MISSISSIPPI

## SOIL MAP



Code	Description	Acres	%	CPI	NCCPI	CAP	?
<b>Cn</b>	Collins-Falaya silt loams, gently sloping phases (collins, waverly)	11.66	83.76%	-	78	2w	?
<b>Co</b>	Collins soils and Waverly soils, local alluvium phases	1.64	11.78%	-	71	2w	?
<b>Wa</b>	Waverly soils, depressional phases (rosebloom)	0.63	4.53%	-	75	3w	?



**SMALLTOWN**  
HUNTING PROPERTIES  
& REAL ESTATE<sup>SM</sup>

**HUNTER ROBISON**

LAND SPECIALIST

C: 662-816-7987

O: 662-238-4077

[hrobison@smalltownproperties.com](mailto:hrobison@smalltownproperties.com)

50 CR 401 - Oxford, MS 38655

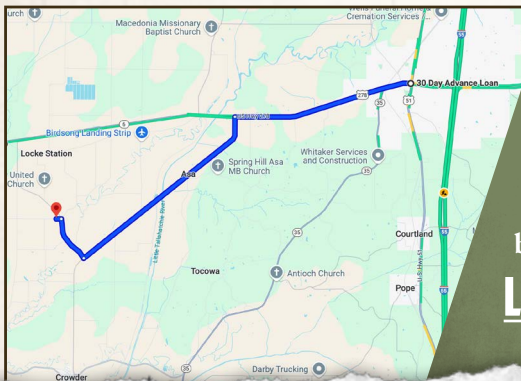
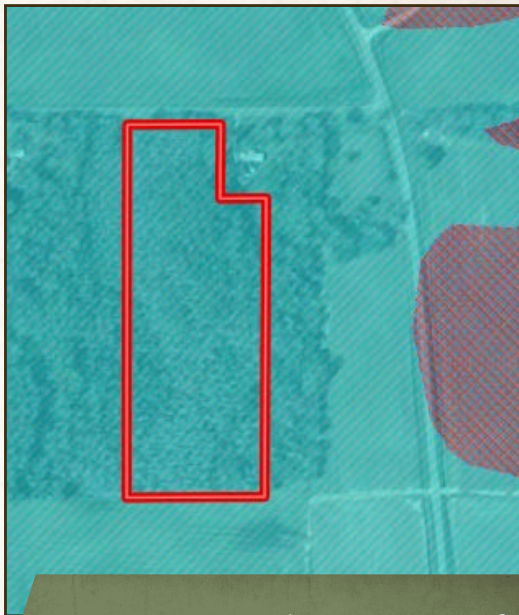
[smalltownproperties.com](http://smalltownproperties.com)

Information is believed to be accurate but not guaranteed.

**13.4± ACRES**     **QUITMAN COUNTY, MISSISSIPPI**

**land id. LINK**

**FLOOD MAP**



Directions From the Intersection of HWY 51 and US-278 in Batesville, MS: Travel 5.9 miles west on US-278. Turn left onto Dummyline Road and travel 6.9 miles. Turn right onto Jamison Road and continue 1.5 miles. Turn left onto Hood Road and the destination will be on the left in 0.2 miles.

**[LINK TO GOOGLE MAP DIRECTIONS](#)**



**SMALLTOWN**  
HUNTING PROPERTIES  
& REAL ESTATE<sup>SM</sup>

**HUNTER ROBISON**

LAND SPECIALIST

C: 662-816-7987

O: 662-238-4077

[hrobison@smalltownproperties.com](mailto:hrobison@smalltownproperties.com)

50 CR 401 - Oxford, MS 38655

[smalltownproperties.com](http://smalltownproperties.com)

Information is believed to be accurate but not guaranteed.