

Turnkey Hunting Tract 51± Acres in Simpson County, MS



\$135,000

Are you searching for a turnkey hunting tract in Simpson County, MS? This 51+/- acre parcel features an internal trail system and an easily navigable timber stand. Located between the Strong River and the Pearl River in SW Simpson County, MS, this picturesque wooded area is home to whitetails and some feral hogs thriving in the rich river bottom soil. A small creek meanders through the property, which is a desirable feature. Situated about 45 minutes from Brookhaven or Brandon, MS, with access via a deeded easement from Lee Bass Road, this property is ready to make your own. The food plot is prepped for planting, and the shooting house is in place – claim this tract for yourself! Call David to schedule a private showing!

Directions from the intersection of Highway 27 and Highway 28 at Georgetown, MS: Travel Highway 28 East for 5.3 miles. Turn right onto Lee Bass Road and travel 2.1 miles. The property entrance will be on your right. [Google Map Link](#)



DAVID
BELDEN
REALTOR®

Office: 601.898.2772

Cell: 601.415.3883

DBelden@TomSmithLand.com



A Real Estate Expert You Can Trust

TomSmithLandandHomes.com

Information is believed to be accurate but not guaranteed.





DAVID BELDEN

REALTOR®

Office: 601.898.2772

Cell: 601.415.3883

DBelden@TomSmithLand.com



Expect More. Get More.

A Real Estate Expert You Can Trust

TomSmithLandandHomes.com

Information is believed to be accurate but not guaranteed.





DAVID BELDEN

REALTOR®

Office: 601.898.2772

Cell: 601.415.3883

DBelden@TomSmithLand.com



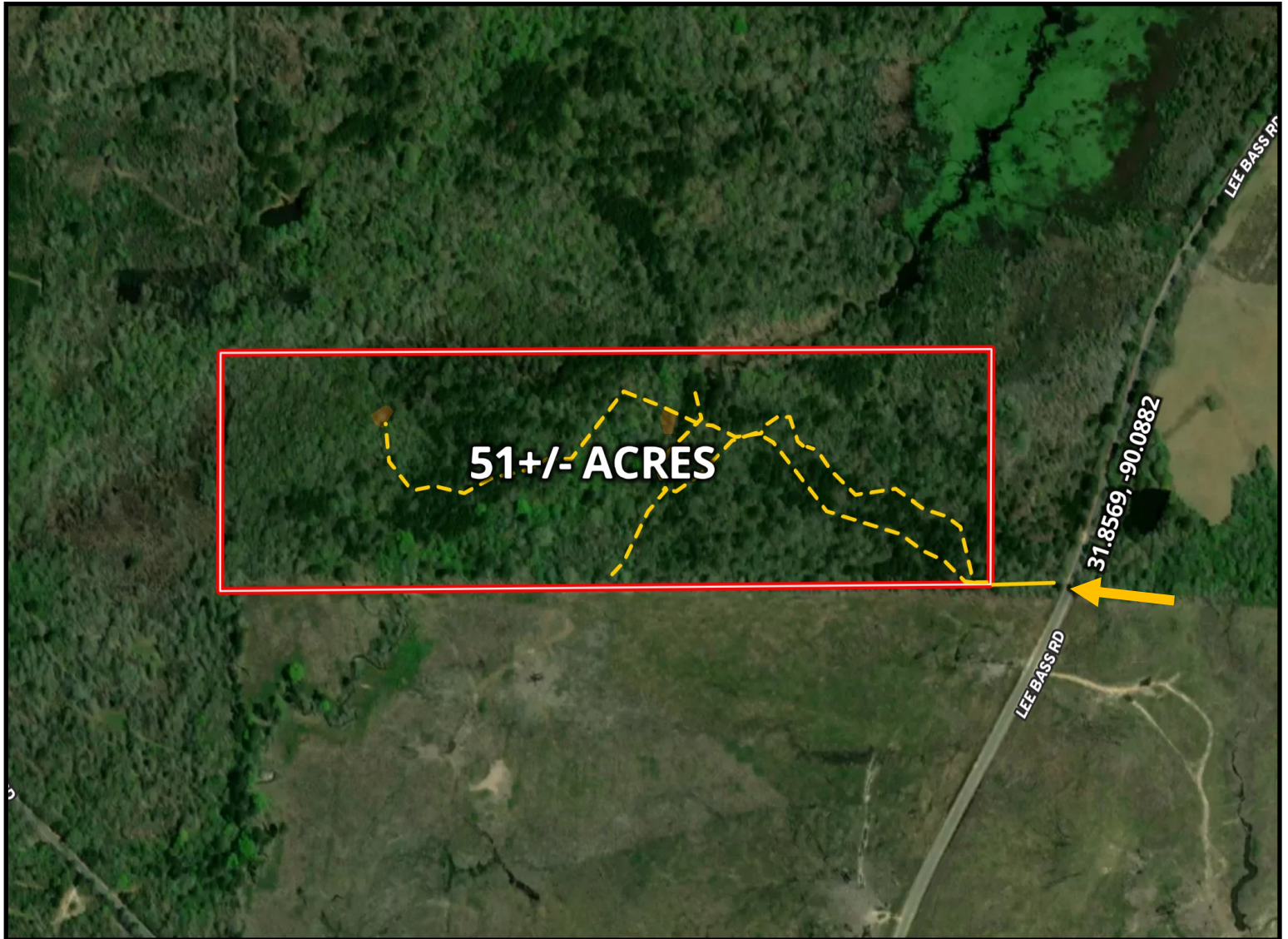
A Real Estate Expert You Can Trust

TomSmithLandandHomes.com

Information is believed to be accurate but not guaranteed.



Aerial Map



[CLICK HERE FOR AN INTERACTIVE MAP LINK](#)

*Yellow line indicates deeded easement to property

DAVID BELDEN

REALTOR®

Office: 601.898.2772

Cell: 601.415.3883

DBelden@TomSmithLand.com



Expect More. Get More.

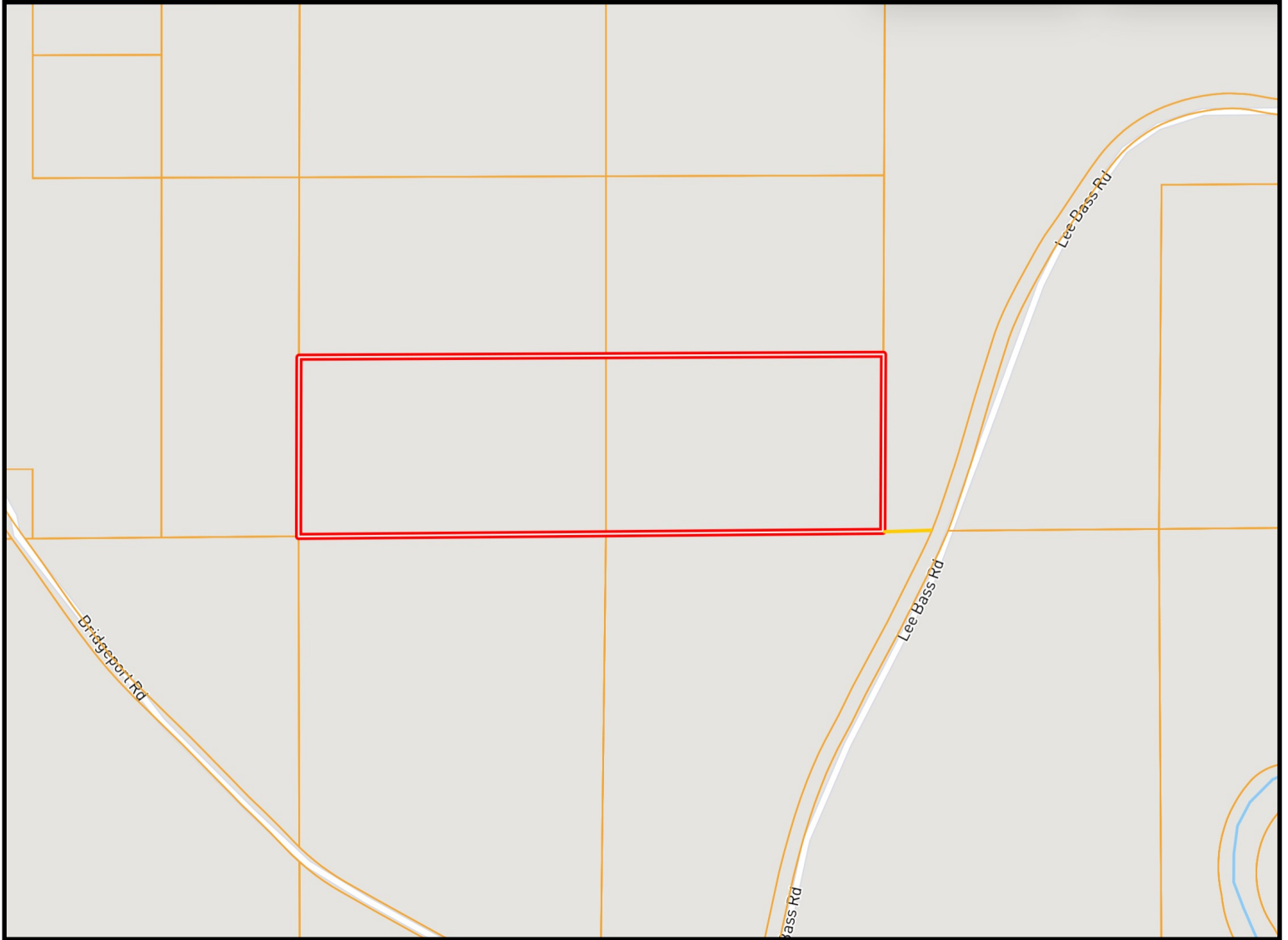
A Real Estate Expert You Can Trust

TomSmithLandandHomes.com

Information is believed to be accurate but not guaranteed.



Ownership Map



DAVID BELDEN

REALTOR®

Office: 601.898.2772

Cell: 601.415.3883

DBelden@TomSmithLand.com



Expect More. Get More.

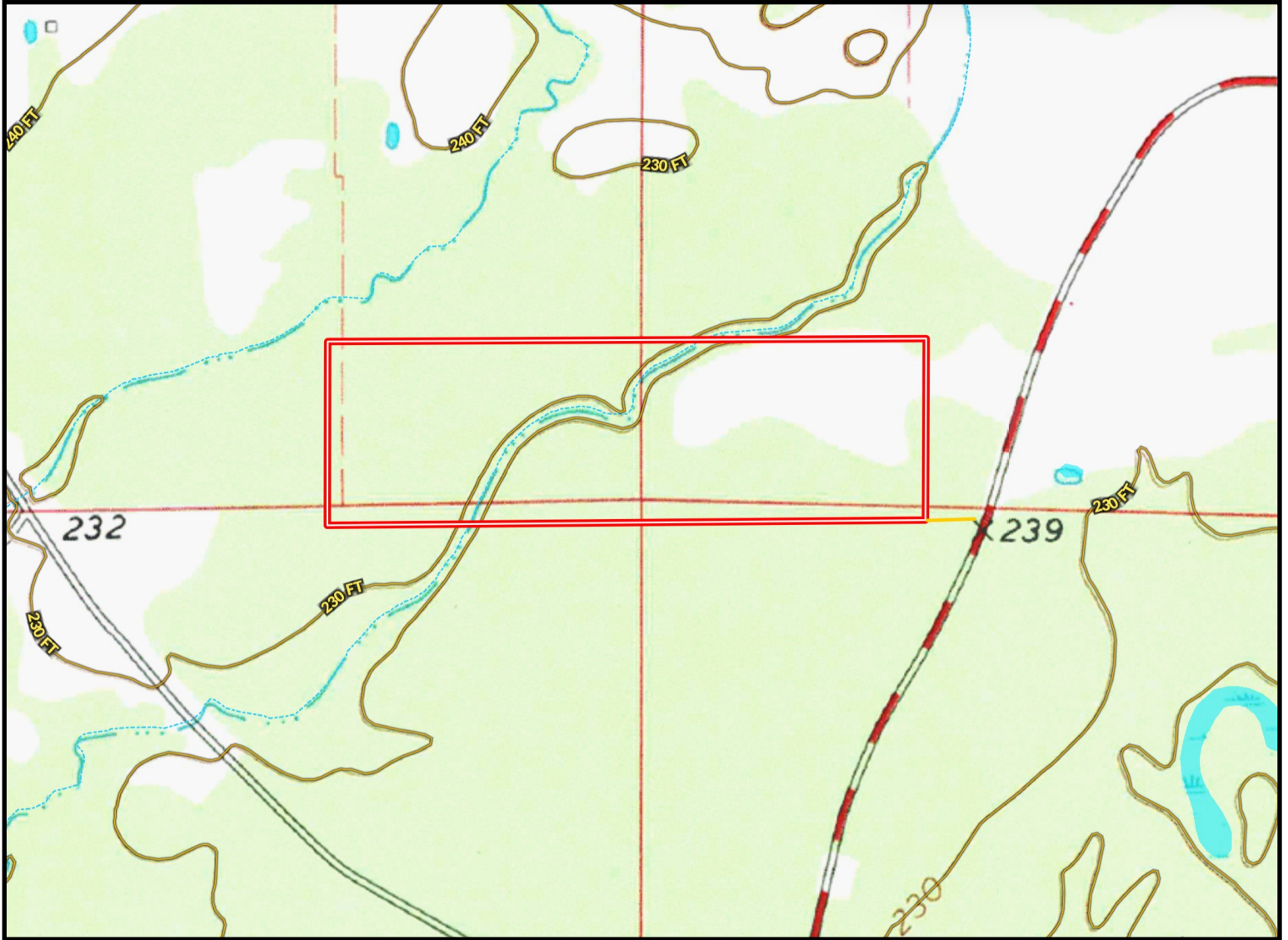
A Real Estate Expert You Can Trust

TomSmithLandandHomes.com

Information is believed to be accurate but not guaranteed.



Topography Map



DAVID BELDEN

REALTOR®

Office: 601.898.2772

Cell: 601.415.3883

DBelden@TomSmithLand.com



Expect More. Get More.

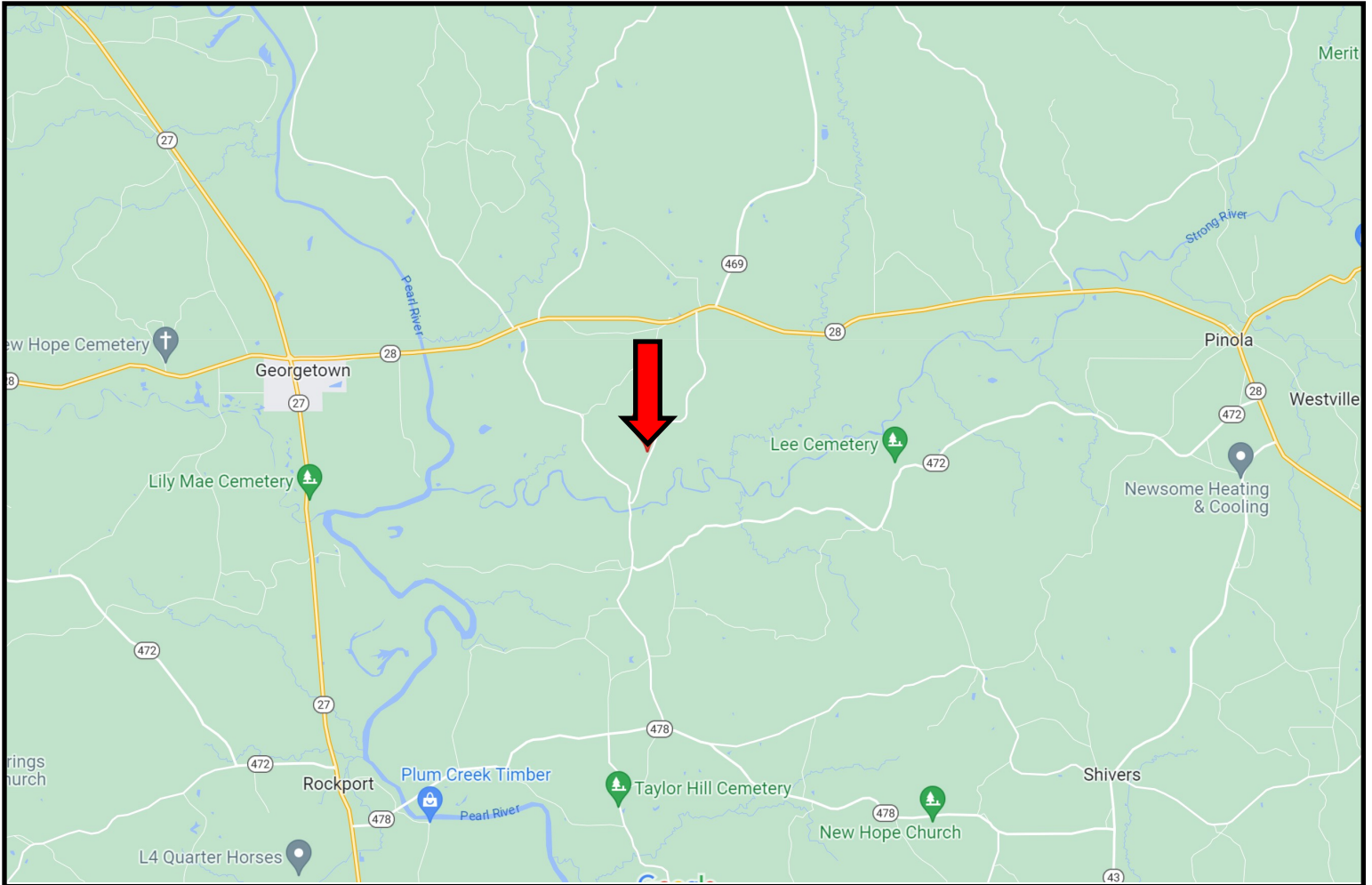
A Real Estate Expert You Can Trust

TomSmithLandandHomes.com

Information is believed to be accurate but not guaranteed.



Directional Map



Directions from the intersection of Highway 27 and Highway 28 at Georgetown, MS: Travel Highway 28 East for 5.3 miles. Turn right onto Lee Bass Road and travel 2.1 miles. The property entrance will be on your right. [Google Map Link](#)



**DAVID
BELDEN**
REALTOR®

Office: 601.898.2772

Cell: 601.415.3883

DBelden@TomSmithLand.com



A Real Estate Expert You Can Trust

TomSmithLandandHomes.com

Information is believed to be accurate but not guaranteed.

