



221 SHERYL DRIVE
MADISON, MS | MADISON COUNTY
\$299,000



SMALLTOWN
HUNTING PROPERTIES
& REAL ESTATE SM

OFFICE (769) 888-2522 | WWW.SMALLTOWNPROPERTIES.COM

221 SHERYL DRIVE

PROPERTY PROFILE

LOCATION:

- 221 Sheryl Drive
Madison, MS 39110
- Madison County
- 3.6± Miles to I-55
- 2.4± Miles to Ridgeland
- Walking Distance to Madison
Ridgeland Academy and
Strawberry Patch Park

COORDINATES:

- 32.45127, -90.1091

PROPERTY USE:

- Residential
- Investment

PROPERTY INFORMATION:

- 1,885± SqFt Home
- Newly Remodeled
- 4 Bedrooms/2 Baths
- Gas Fireplace
- Granite Countertops
- Kitchen Appliances Included
- Screened-In Back Porch
- New Flooring
- Fresh Paint Throughout
- 2 Storage Sheds
- Custom Cabinetry
- Large, Fenced-In Backyard

TAX INFORMATION:

- 2024 \$1,969.82
- Parcel Number:
072D-17A-030-00-00



MELANIE STARNES | RESIDENTIAL SPECIALIST
C: 601-906-9899 | melanie@smalltownproperties.com



CADAN STARNES | LAND SPECIALIST
C: 601-720-6142 | cadan@smalltownproperties.com

WELCOME TO 221 SHERYL DRIVE

WELCOME TO THIS STUNNINGLY REMODELED HOME IN THE HEART OF MADISON, MISSISSIPPI. The home is conveniently located less than four miles from I-55, near restaurants, shopping, entertainment, medical facilities, and all that 'Madison the City' has to offer.

The 1,885± square foot home features four bedrooms, two bathrooms, a spacious kitchen, and a laundry room, ideal for growing families, guests, or even a home office. From the moment you walk in, you'll notice the attention to detail—from the fresh interior paint to the luxurious new flooring that flows seamlessly throughout the home. The kitchen is a true highlight, with elegant granite countertops, custom cabinetry, and a full suite of included kitchen appliances, making it both functional and stylish, perfect for preparing meals or hosting family and friends. Just off the kitchen, the open living area offers a cozy gas fireplace, creating a warm and inviting atmosphere year-round. The sizable laundry room adds extra convenience with plenty of space to keep things organized and efficient.



MELANIE STARNES | RESIDENTIAL SPECIALIST
C: 601-906-9899 | melanie@smalltownproperties.com



CADAN STARNES | LAND SPECIALIST
C: 601-720-6142 | cadan@smalltownproperties.com

MORE ABOUT 221 SHERYL DRIVE

Step outside to your screened-in back porch, a peaceful retreat ideal for morning coffee or relaxing evenings. The large fenced-in backyard provides ample room for kids, pets, or entertaining and includes two sheds to meet all your outdoor storage needs.

Located just a short walk from Madison Ridgeland Academy and the beloved Strawberry Patch Park, this home offers a rare blend of privacy and community. Don't miss the opportunity to own this beautifully updated home in one of Madison's most desirable locations.

**Call Caden or Melanie Starnes to schedule a private tour
and make 221 Sheryl Drive your new address!**



MELANIE STARNES | RESIDENTIAL SPECIALIST
C: 601-906-9899 | melanie@smalltownproperties.com



CADEN STARNES | LAND SPECIALIST
C: 601-720-6142 | caden@smalltownproperties.com



MELANIE STARNES | RESIDENTIAL SPECIALIST
C: 601-906-9899 | melanie@smalltownproperties.com



CADAN STARNES | LAND SPECIALIST
C: 601-720-6142 | cadan@smalltownproperties.com



MELANIE STARNES | RESIDENTIAL SPECIALIST
C: 601-906-9899 | melanie@smalltownproperties.com



CADAN STARNES | LAND SPECIALIST
C: 601-720-6142 | cadan@smalltownproperties.com



MELANIE STARNES | RESIDENTIAL SPECIALIST
C: 601-906-9899 | melanie@smalltownproperties.com



CADAN STARNES | LAND SPECIALIST
C: 601-720-6142 | cadan@smalltownproperties.com



MELANIE STARNES | RESIDENTIAL SPECIALIST
C: 601-906-9899 | melanie@smalltownproperties.com

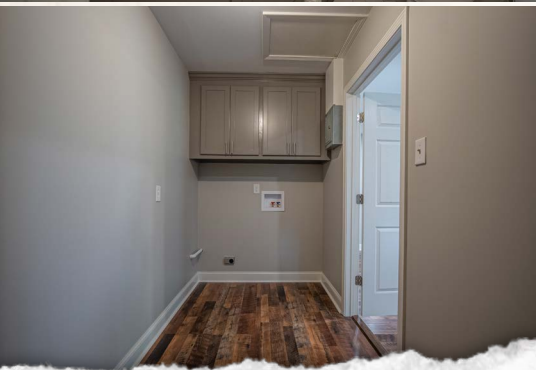


CADAN STARNES | LAND SPECIALIST
C: 601-720-6142 | cadan@smalltownproperties.com

221 SHERYL DRIVE

MADISON, MISSISSIPPI

MADISON COUNTY



MELANIE STARNES | RESIDENTIAL SPECIALIST
C: 601-906-9899 | melanie@smalltownproperties.com



CADEN STARNES | LAND SPECIALIST
C: 601-720-6142 | caden@smalltownproperties.com

221 SHERYL DRIVE

MADISON, MISSISSIPPI

MADISON COUNTY



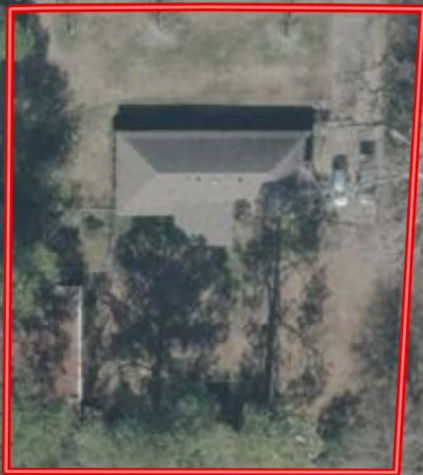
MELANIE STARNES | RESIDENTIAL SPECIALIST
C: 601-906-9899 | melanie@smalltownproperties.com



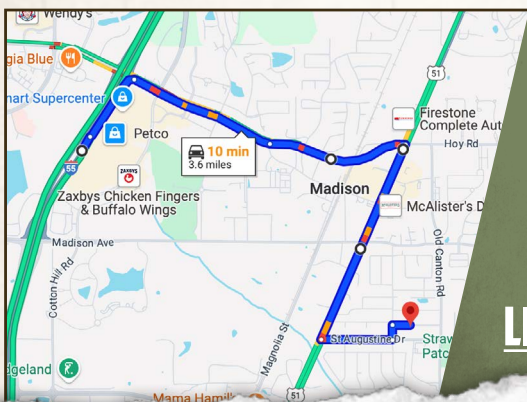
CADAN STARNES | LAND SPECIALIST
C: 601-720-6142 | cadan@smalltownproperties.com

SHERYLDR

SHERYLDR



land id. LINK



Directions From Exit #108 off I-55
North: Turn right on MS-463 E/
Main St and proceed to US-51. Turn
right onto US-51 South and continue
1.1 miles. Turn left on St Augustine
Drive and proceed 0.4 miles. Turn left
on Church Street and then turn right
onto Sheryl Drive to the property on the
right.

Physical Address:
221 Sheryl Drive | Madison, MS 39110

LINK TO GOOGLE MAP DIRECTIONS



MELANIE STARNES | RESIDENTIAL SPECIALIST
C: 601-906-9899 | melanie@smalltownproperties.com



SMALLTOWN
HUNTING PROPERTIES
& REAL ESTATESM



CADAN STARNES | LAND SPECIALIST
C: 601-720-6142 | cadan@smalltownproperties.com