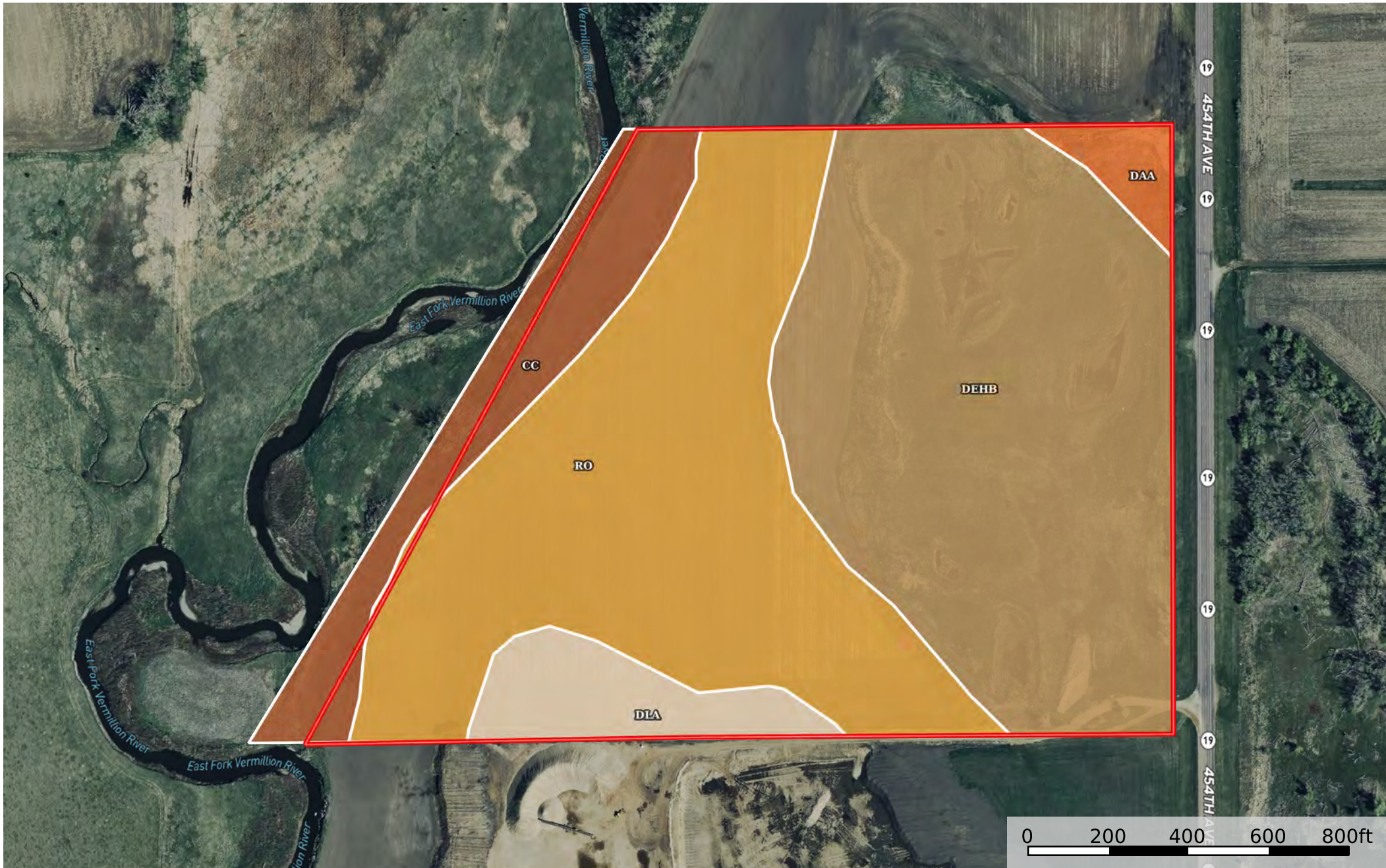


Turner County, 52 Acres  
South Dakota, AC +/-



 Boundary

Boundary 55.55 ac

| SOIL CODE | SOIL DESCRIPTION   | ACRES    | %     | CPI   | NCCPI | CAP  |
|-----------|--|----------|-------|-------|-------|------|
| DehB      | Delmont-Enet loams, high precipitation, 2 to 6 percent slopes  | 24.16    | 43.49 | 44    | 43    | 4s   |
| Ro        | Bon loam, 0 to 2 percent slopes, rarely flooded                | 21.39    | 38.51 | 85    | 76    | 2c   |
| Cc        | Bon loam, channeled, 0 to 2 percent slopes, frequently flooded | 5.77     | 10.39 | 35    | 36    | 6w   |
| DIA       | Delmont-Enet loams, high precipitation, 0 to 2 percent slopes  | 3.13     | 5.63  | 51    | 43    | 3s   |
| DaA       | Davis loam, 0 to 2 percent slopes                              | 1.1      | 1.98  | 89    | 69    | 1    |
| TOTALS    |  | 55.55(*) | 100%  | 60.14 | 55.49 | 3.32 |

(\*) Total acres may differ in the second decimal compared to the sum of each acreage soil. This is due to a round error because we only show the acres of each soil with two decimal.

