

265± Acres in Kemper County, MS

\$499,000



SMALLTOWN
HUNTING PROPERTIES
& REAL ESTATESM

Office 769-760-0005

Property Profile

Unlimited Recreation in Kemper County

Location:

- Kemper County, MS
- Chisolm Cemetery Road Frontage
- 24 Miles Northwest of Meridian

Coordinates:

- 32.620297, -88.863177

Property Information:

- 265± Acres
- County Road Frontage with Gate
- Established Trail System
- Rolling Terrain
- Outstanding Wildlife Habitat
- Pine Plantation, Harwood, Cutover
- Creek Frontage
- Power and Water Available

Property Use:

- Deer
- Turkey
- Timber Investment
- Home/Camp Site

Tax Information:

- Parcel 165-21-06.000, 165-21-07.000, 165-22-17.000, Part of 165-21-03.000, 165-21-04.000: \$875.00 for 2023 Estimated



SMALLTOWN
HUNTING PROPERTIES
& REAL ESTATESM

DENNIS WEST

EAST MISSISSIPPI MANAGING BROKER

ALABAMA QUALIFYING BROKER

LOUISIANA ASSOCIATE BROKER

C: 601-248-4396 | O: 769-760-0005

dennis@smalltownproperties.com

2121 5th St., Ste 206 - Meridian, MS 39301

smalltownproperties.com

Have you been searching for a recreational playground and future timber investment? This 265± acre tract could end your search! Situated approximately 24 miles from Meridian, in the Rio community of Kemper County, MS, this property offers rolling terrain, pine plantation, hardwood and cutover.

1846



FILE EDGE - 2013

02/14/24 08:3

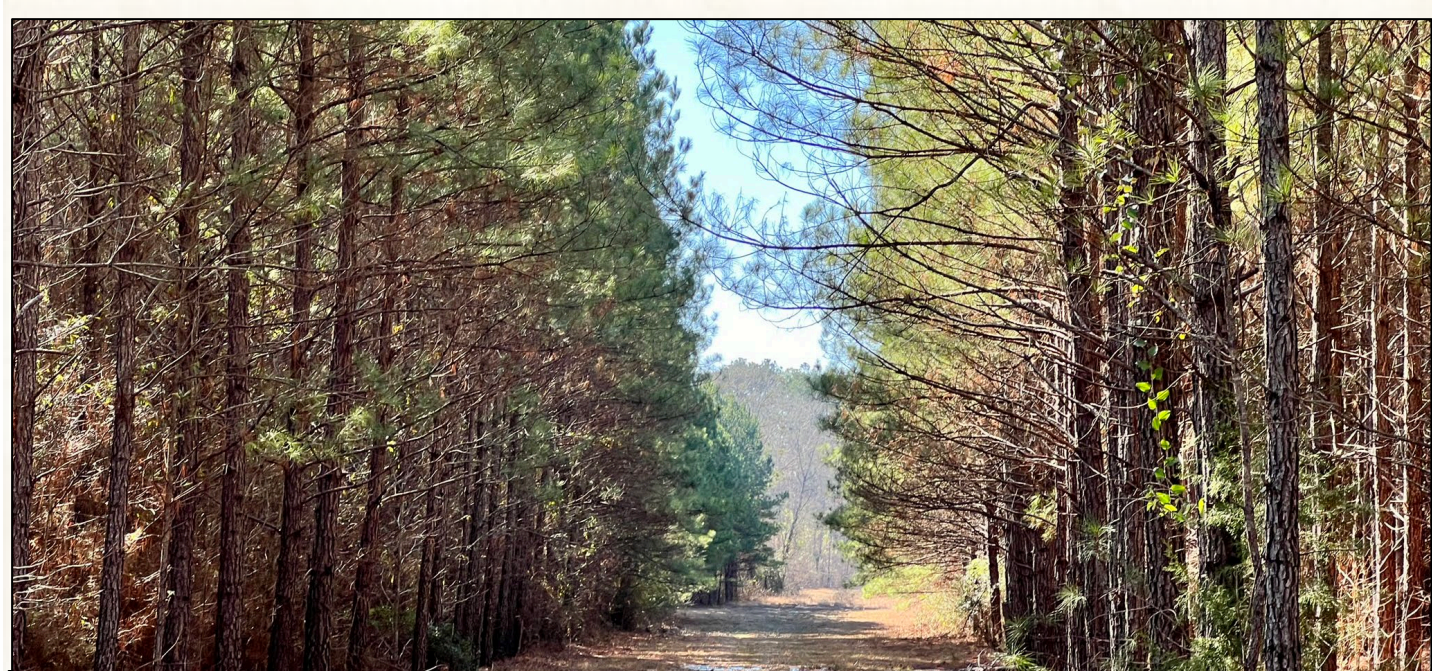


SMALLTOWN

HUNTING PROPERTIES
& REAL ESTATESM

DENNIS WEST
EAST MISSISSIPPI MANAGING BROKER
ALABAMA QUALIFYING BROKER
LOUISIANA ASSOCIATE BROKER
C: 601-248-4396 | O: 769-760-0005
dennis@smalltownproperties.com
2121 5th St., Ste 206 - Meridian, MS 39301
smalltownproperties.com

Information is believed to be accurate but not guaranteed.



The gated property features road frontage on Chisholm Cemetery Road, and both electric power and community water are available for a potential camp site. An established road system is in place making easy access to food plots and all areas of the tract. There are two stands of pine plantation: approximately 15 years old, ready for thinning, and 10 years old. The balance of the property is fresh cutover, perfect for replanting or it can be left for natural regrowth. For the wildlife, there is scattered hardwood along Houston Creek bordering the south boundary and numerous large foodplots are positioned throughout. For unlimited recreation, the Kemper 265 checks many boxes! Call Dennis West today to schedule a private tour.

ULTRIE MOBILE EDGE - 1228 02/13/24 05:27 PM 5G



SMALLTOWN

HUNTING PROPERTIES
& REAL ESTATESM

DENNIS WEST
*EAST MISSISSIPPI MANAGING BROKER
 ALABAMA QUALIFYING BROKER
 LOUISIANA ASSOCIATE BROKER*
C: 601-248-4396 | O: 769-760-0005
dennis@smalltownproperties.com
 2121 5th St., Ste 206 - Meridian, MS 39301
smalltownproperties.com

Information is believed to be accurate but not guaranteed.



SMALLTOWN

HUNTING PROPERTIES
& REAL ESTATESM

DENNIS WEST

EAST MISSISSIPPI MANAGING BROKER

ALABAMA QUALIFYING BROKER

LOUISIANA ASSOCIATE BROKER

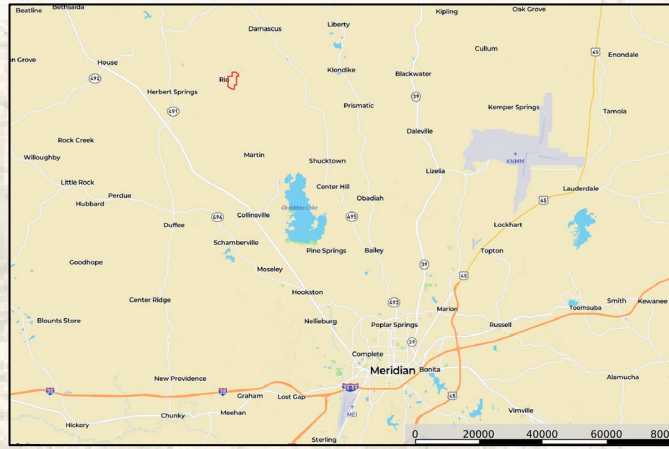
C: 601-248-4396 | O: 769-760-0005

dennis@smalltownproperties.com

2121 5th St., Ste 206 - Meridian, MS 39301

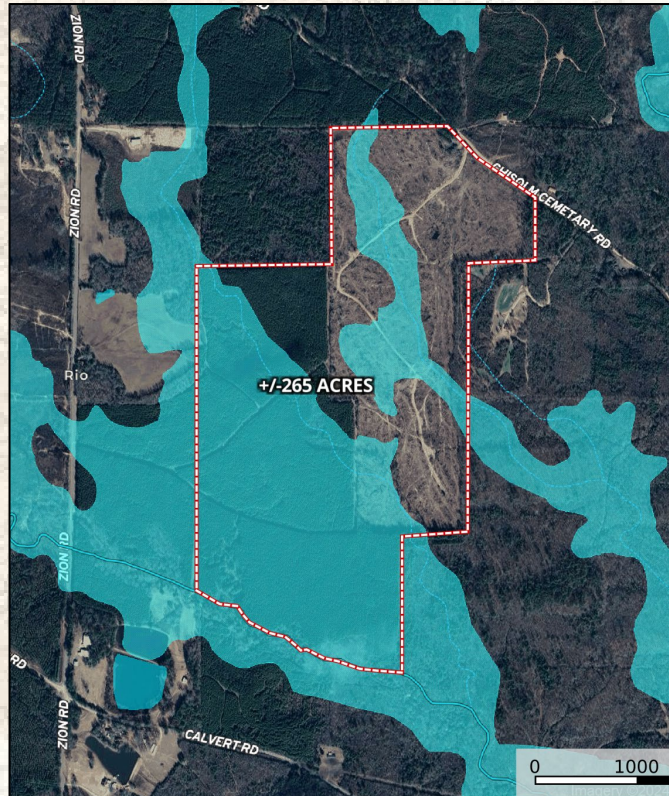
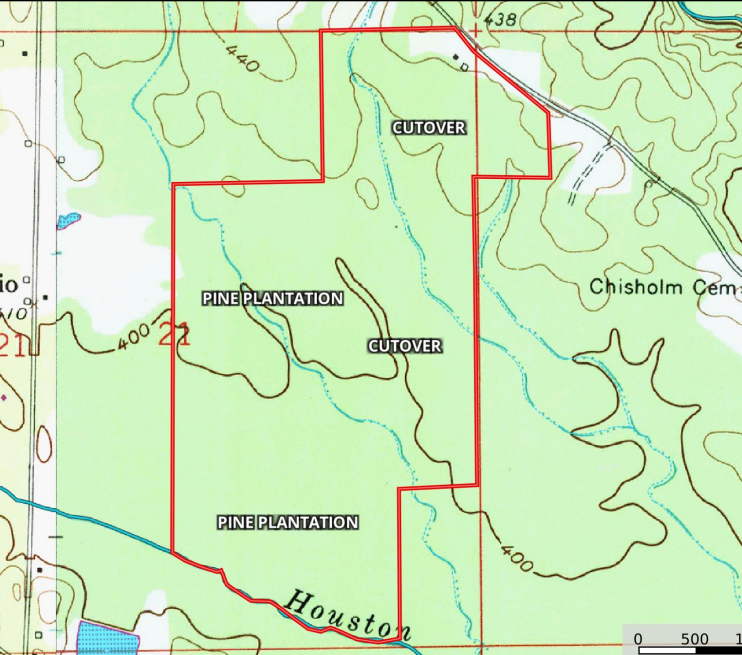
smalltownproperties.com

Google Map Link



- Pine Plantation, Cutover, Hardwood
- Chisolm Cemetary Road Frontage
- 24 Miles from Meridian

MapRight Link



SMALLTOWN
HUNTING PROPERTIES
& REAL ESTATESM

DENNIS WEST

EAST MISSISSIPPI MANAGING BROKER

ALABAMA QUALIFYING BROKER

LOUISIANA ASSOCIATE BROKER

C: 601-248-4396 | O: 769-760-0005

dennis@smalltownproperties.com

2121 5th St., Ste 206 - Meridian, MS 39301

smalltownproperties.com