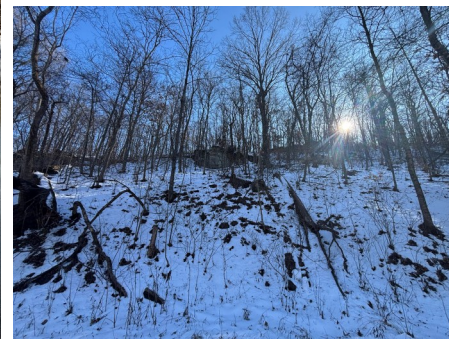


**T R O P H Y**  
PROPERTIES AND AUCTION  
LAND | RECREATIONAL | RESIDENTIAL

# Loutre River Frontage Land for Sale - Montgomery County

[www.TrophyPA.com](http://www.TrophyPA.com) • (855) 573-5263 • [leads@trophyapa.com](mailto:leads@trophyapa.com)



**PROPERTY ADDRESS:**

00 River Trail Road  
New Florence, MO 63363

**PRICE:** \$7,499

**ACRES:** .57

**COUNTY:** Montgomery

**PROPERTY HIGHLIGHTS:**

- Loutre River frontage
- Swimming
- Fishing
- Easy road access
- Possible build sites

**PROPERTY DESCRIPTION:**

Loutre River frontage for endless recreational fun! That's right, this property rests along the Loutre River for easy fishing, swimming, or simply hanging out. The property also includes potential build sites for a cabin or garage, healthy timber and road frontage for easy access.



**PRESENTED BY:**

**JON HARTING**

**Land Specialist**

M: (314) 610-6650

P: (855) 573-5263 x751

E: [jharting@trophyapa.com](mailto:jharting@trophyapa.com)

**Trophy Properties and Auction**

640 Cepi Drive, Suite 100  
Chesterfield, MO 63005

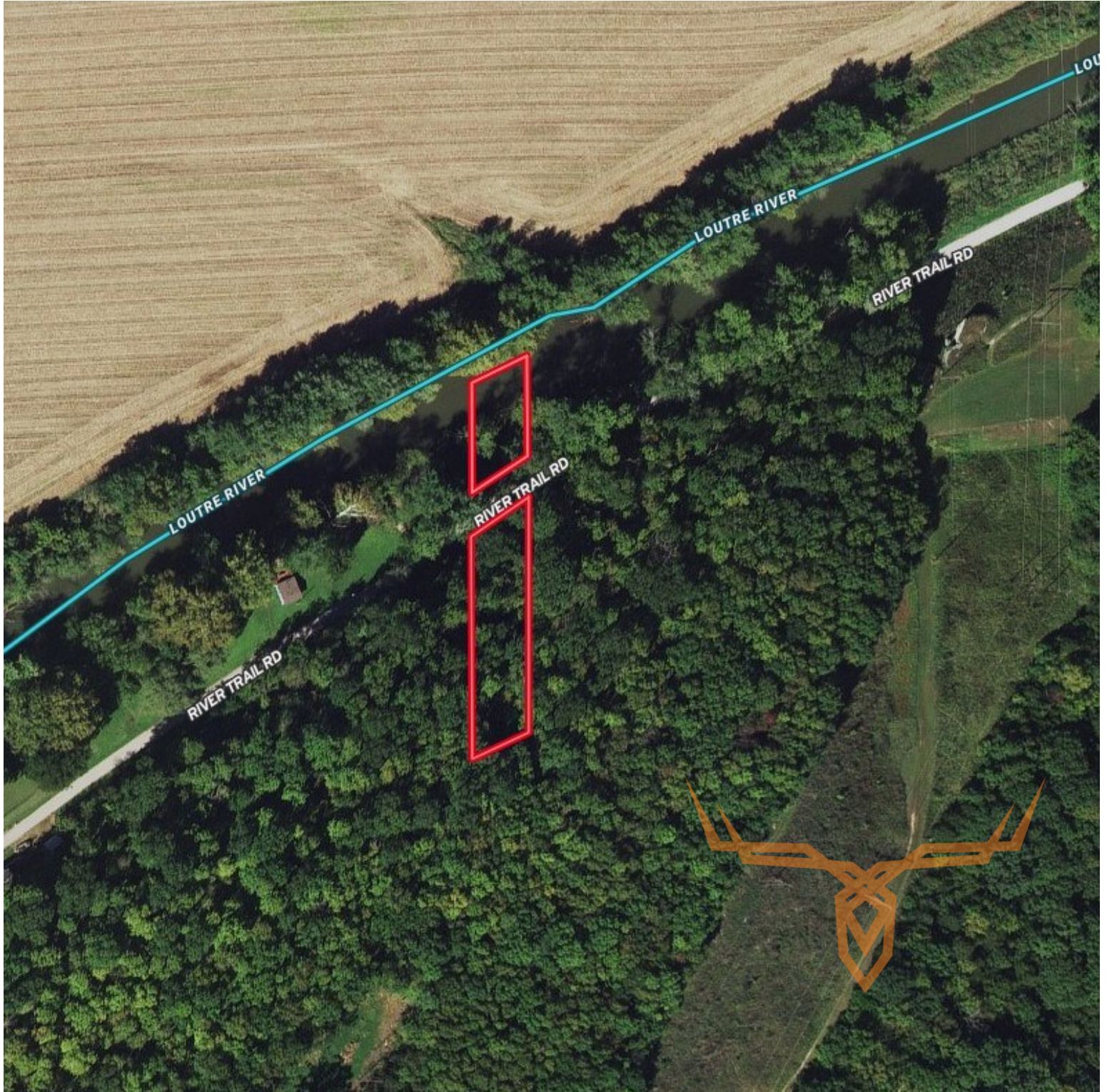
[www.Trophyapa.com](http://www.Trophyapa.com)  
[leads@trophyapa.com](mailto:leads@trophyapa.com)



**T R O P H Y**  
PROPERTIES AND AUCTION  
LAND | RECREATIONAL | RESIDENTIAL

# Loutre River Frontage Land for Sale - Montgomery County

[www.TrophyPA.com](http://www.TrophyPA.com) • (855) 573-5263 • [leads@trophyPA.com](mailto:leads@trophyPA.com)



Broker does not guarantee the accuracy of sq. ft., lot size, or other information, buyer is advised to independently verify the accuracy of information through personal