

8550

DUTCH FLAT RD

WINNEMUCCA, NEVADA

FOR SALE

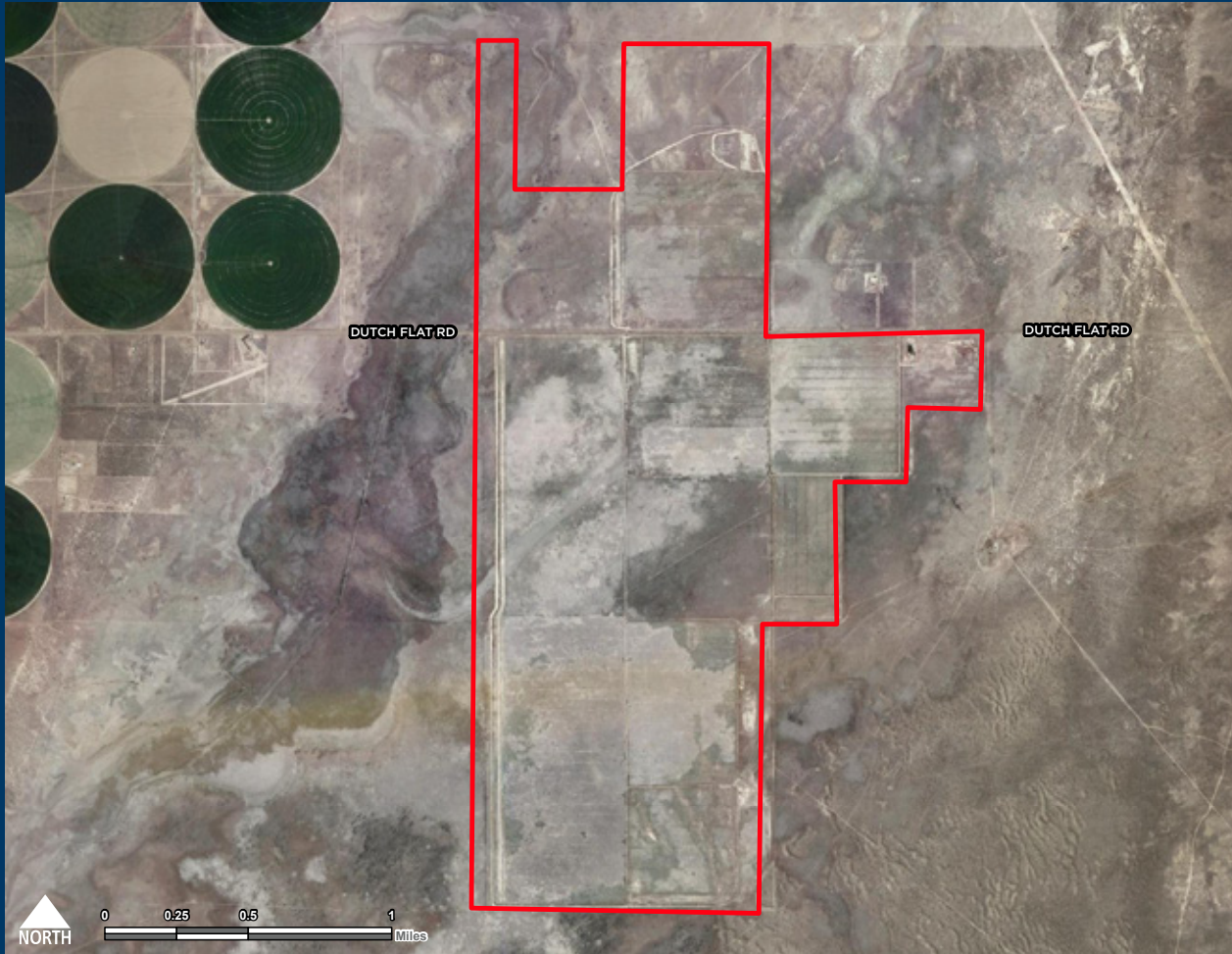
2,095.44 Acres

\$2,000,000



CUSHMAN &
WAKEFIELD

// PROPERTY DETAILS



8550 DUTCH FLAT ROAD
WINNEMUCCA, NEVADA

APN

06-0361-04, 06-0361-08, 06-0361-09,
06-0361-11, 06-0361-22, 06-0361-25,
06-0361-26

ACREAGE

2095.440

JURISDICTION

HUMBOLDT COUNTY

ZONING

OPEN LAND USE DISTRICT (M-3)

WATER RIGHTS

THIS PROPERTY DOES NOT INCLUDE
WATER RIGHTS

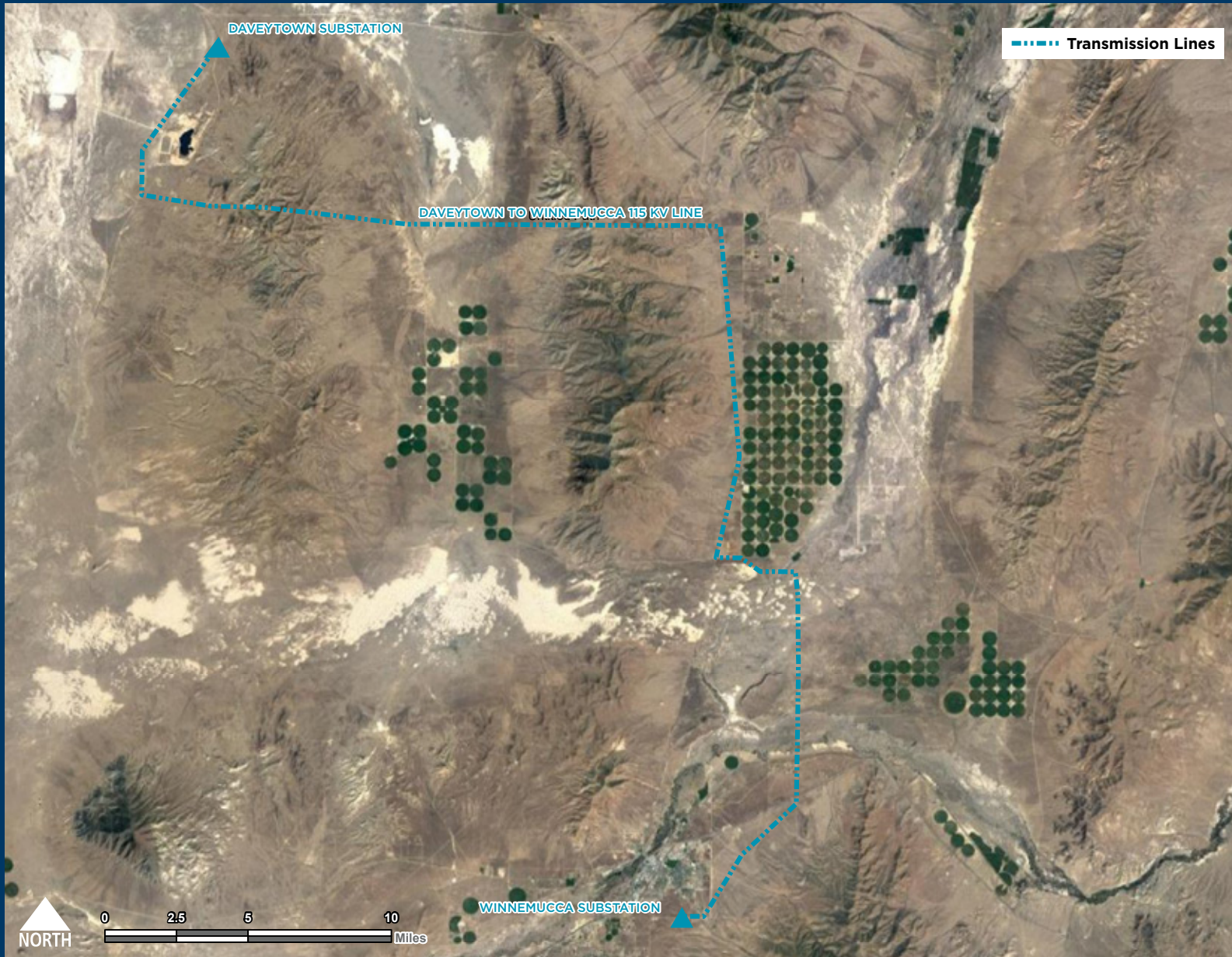
PRIOR USE

FARMED TO ALFALFA



CLICK HERE TO VIEW
THE INTERACTIVE MAP

// PROPERTY DETAILS



// PROPERTY DETAILS

SOLAR DEVELOPMENT OPPORTUNITY

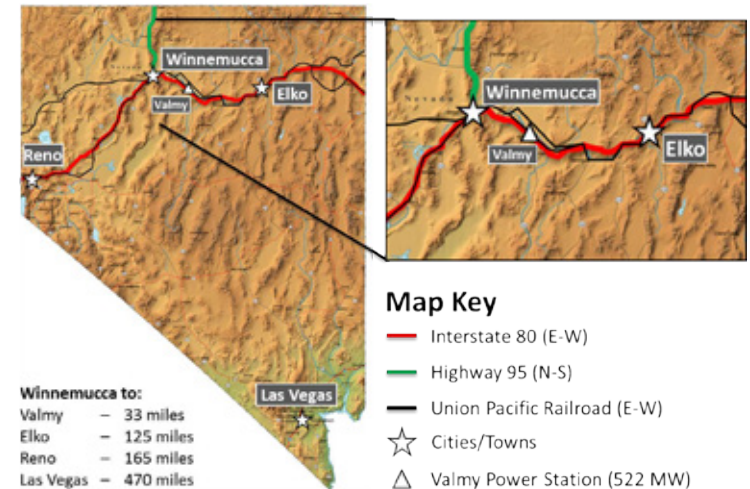
The property is located approximately 2.3 miles from the Daveytown to Winnemucca 115 kv transmission line.

Potential to provide power to the adjacent Winnemucca Farms, which is one of the largest farming operations in Nevada





Photo: travelnevada.com/cities/winnemucca



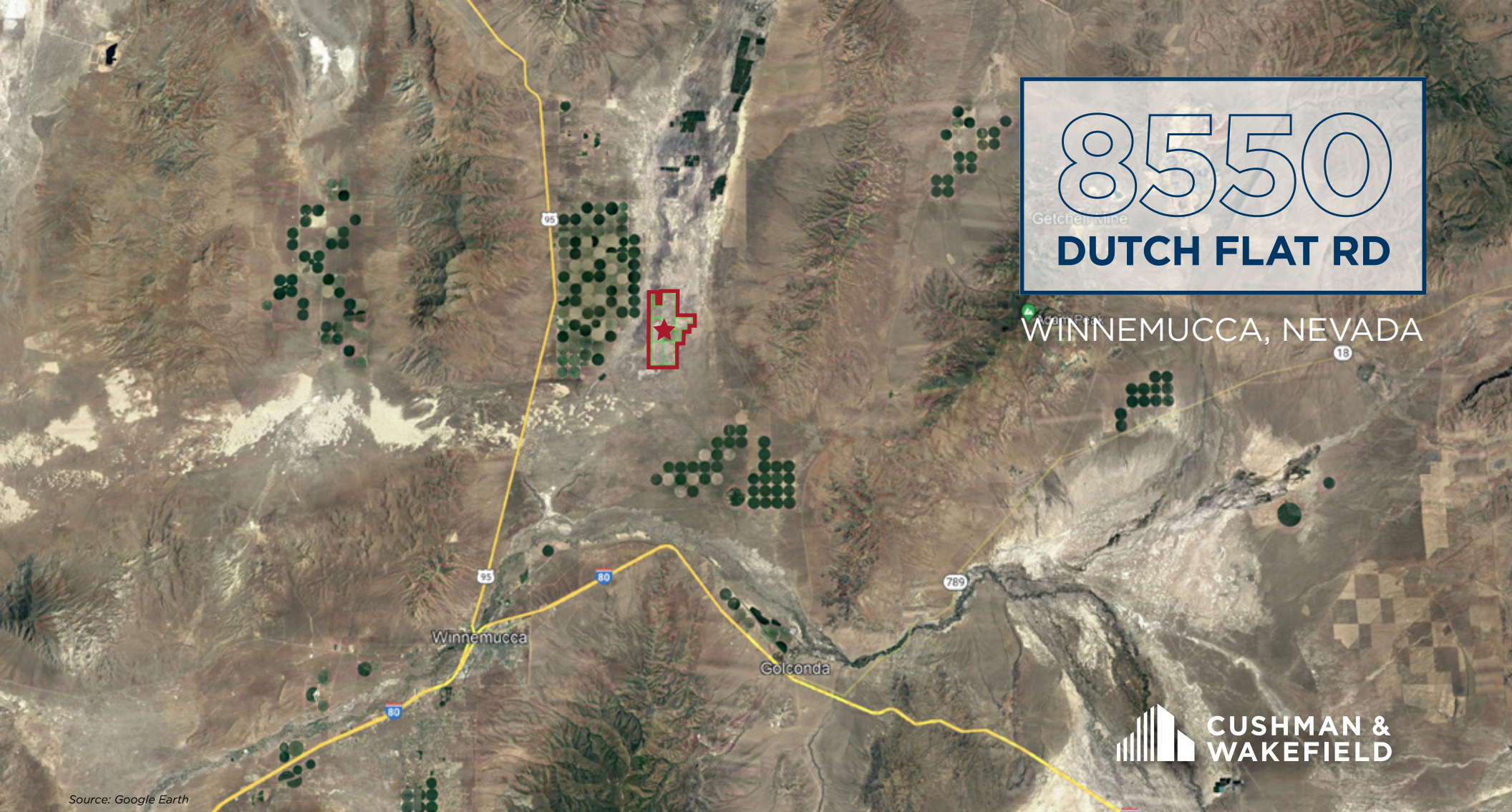
// HUMBOLDT COUNTY ECONOMY OVERVIEW

Humboldt County, Nevada brings a strong economic climate, ease of doing business, and rare quality of life that is a perfect match for companies and entrepreneurs seeking access to one of the world’s largest mining markets as well as one of the West’s emerging high tech and energy hubs — Reno, NV.

The Humboldt Development Authority is your portal to the services and network of people that can make your re-location or start up a profitable success.

Humboldt County offers buildable and entitled land with full sewer and water services, plus relocation incentives. The Winnemucca Airport Industrial Park is located just 2.5 miles from Interstate 80 and less than 2 hours from major high-tech companies like Tesla, Panasonic Apple, Google and Switch.

Humboldt County is proud of its versatile and skilled labor force that enjoys a friendly community, modern infrastructure and connectivity, numerous family amenities, and desirable quality of life.



8550
 Getchen wine
DUTCH FLAT RD

WINNEMUCCA, NEVADA



Source: Google Earth

LISTING BROKER

STEVE AVANZINO
 Director
 +1 775 851 5324
 steve.avanzino@cushwake.com
 LIC #S.0177993.LLC

ADVISORY SERVICES

MATT DAVIS
 Senior Director
 +1 858 334 4026
 matt.davis@cushwake.com
 CA LIC #01758818

SHANNON WHITFIELD
 Senior Associate
 +1 760 809 7675
 shannon.whitfield@cushwake.com
 CA LIC #02121389

50 Washington St., Suite 100
 Reno, NV 89503
 Main +1 775 851 9500
 Fax +1 775 851 9551
cushmanwakefield.com

©2022 Cushman & Wakefield. All rights reserved. The information contained in this communication is strictly confidential. This information has been obtained from sources believed to be reliable but has not been verified. NO WARRANTY OR REPRESENTATION, EXPRESS OR IMPLIED, IS MADE AS TO THE CONDITION OF THE PROPERTY (OR PROPERTIES) REFERENCED HEREIN OR AS TO THE ACCURACY OR COMPLETENESS OF THE INFORMATION CONTAINED HEREIN, AND SAME IS SUBMITTED SUBJECT TO ERRORS, OMISSIONS, CHANGE OF PRICE, RENTAL OR OTHER CONDITIONS, WITHDRAWAL WITHOUT NOTICE, AND TO ANY SPECIAL LISTING CONDITIONS IMPOSED BY THE PROPERTY OWNER(S). ANY PROJECTIONS, OPINIONS OR ESTIMATES ARE SUBJECT TO UNCERTAINTY AND DO NOT SIGNIFY CURRENT OR FUTURE PROPERTY PERFORMANCE.