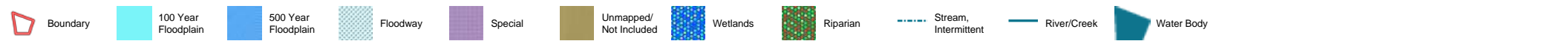
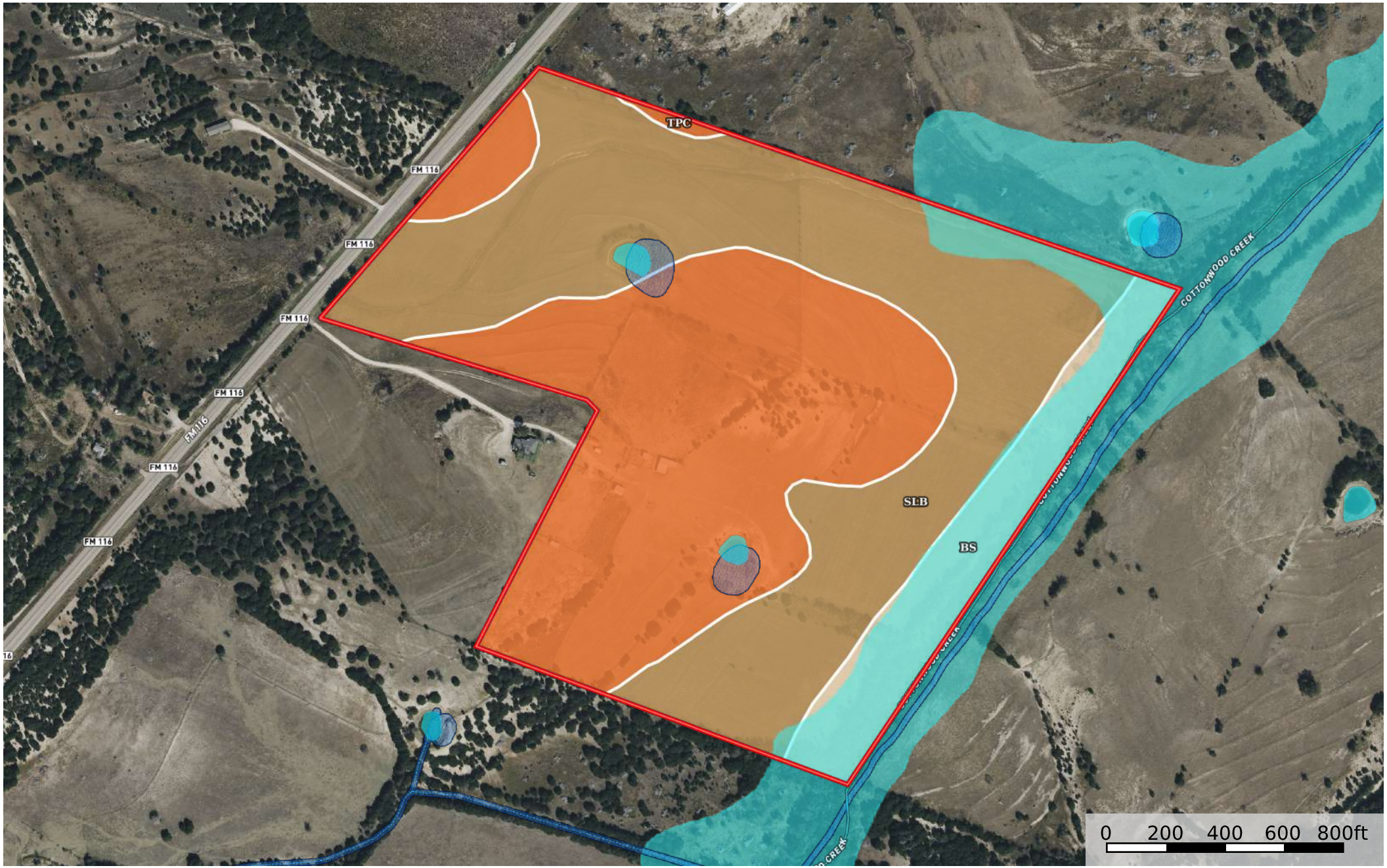


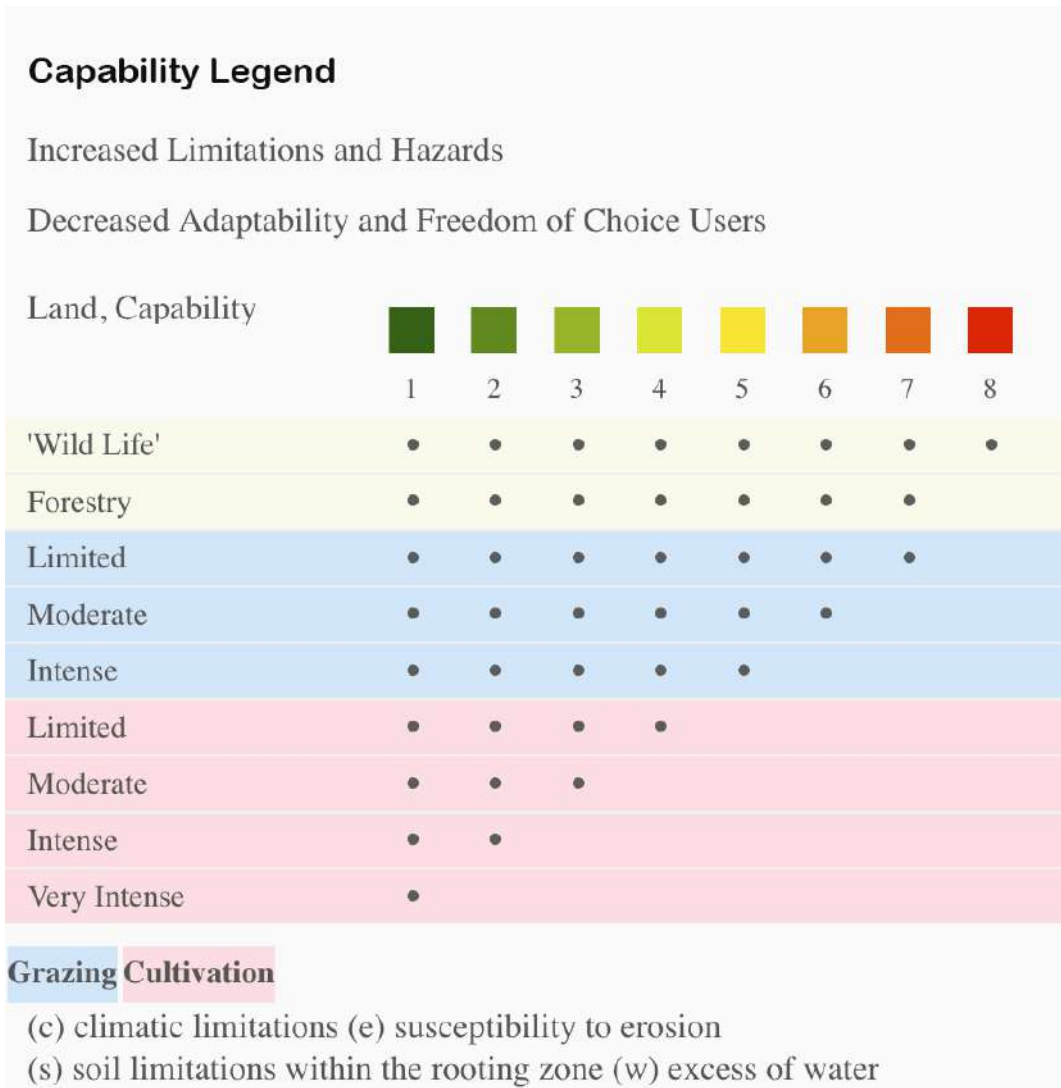
- Boundary
- 100 Year Floodplain
- 500 Year Floodplain
- Floodway
- Special
- Unmapped/ Not Included
- Wetlands
- Riparian
- Stream, Intermittent
- River/Creek
- Water Body



Boundary 84.59 ac

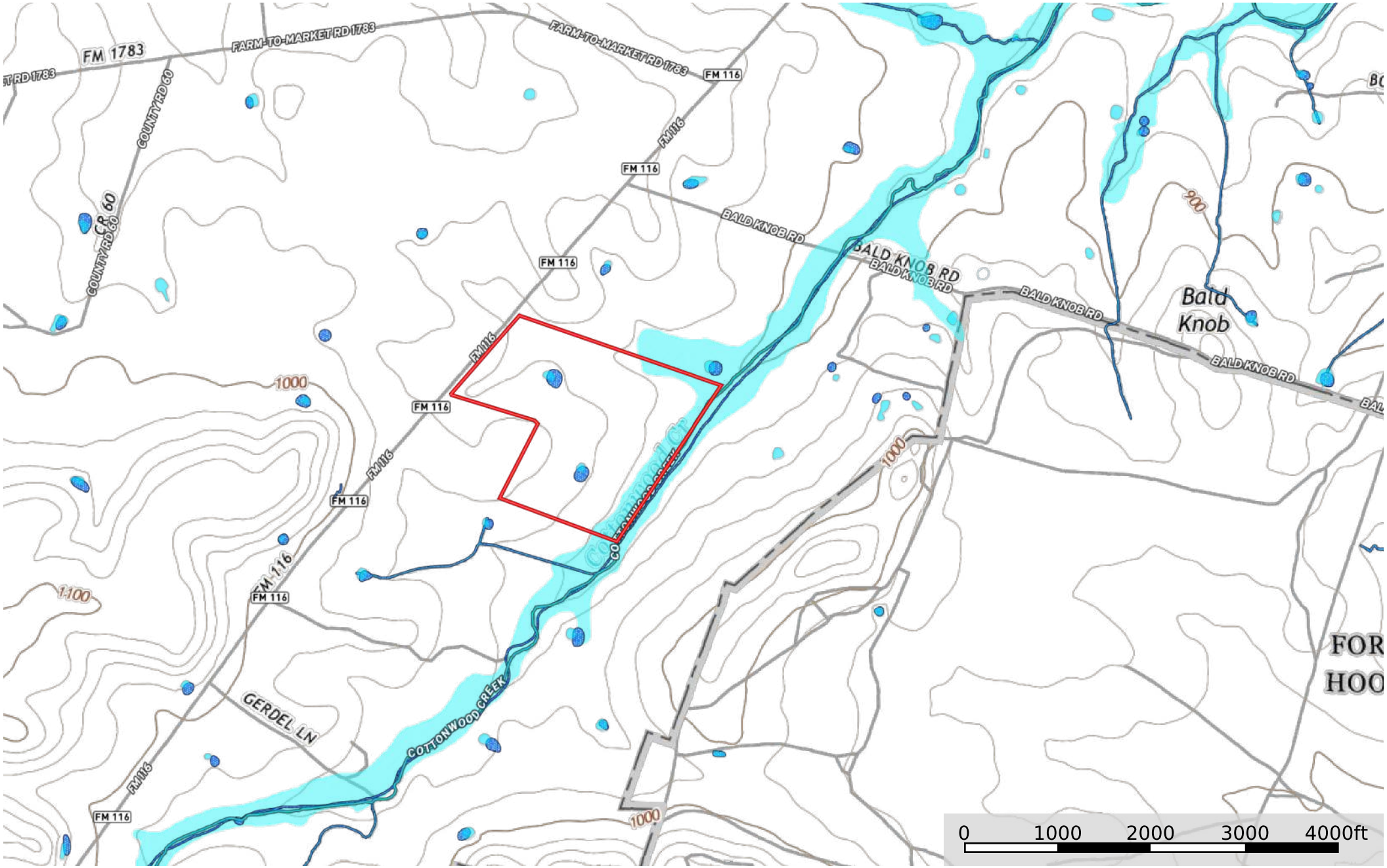
SOIL CODE	SOIL DESCRIPTION	ACRES	%	CPI	NCCPI	CAP
SIB	Slidell silty clay, 0 to 2 percent slopes	39.72	46.96	0	42	3e
TpC	Topsey-Pidcoke clay loams association, 2 to 8 percent slopes	35.67	42.17	0	37	4e
Bs	Bosque clay loam, 0 to 1 percent slopes, occasionally flooded	9.2	10.88	0	59	2w
TOTALS		84.59(*)	100%	-	41.74	3.31

(*) Total acres may differ in the second decimal compared to the sum of each acreage soil. This is due to a round error because we only show the acres of each soil with two decimal.



Tatum - FM 116

Coryell County, Texas, 86.37 AC +/-



- Boundary
- 100 Year Floodplain
- 500 Year Floodplain
- Floodway
- Special
- Unmapped/ Not Included
- Wetlands
- Riparian
- Stream, Intermittent
- River/Creek
- Water Body