

Mule Creek Ranch
Hwy 78
Mule Creek, NM 88061

\$16,500,000
15,704± Acres
Grant County



Mule Creek Ranch
Mule Creek, NM / Grant County

SUMMARY

Address

Hwy 78

City, State Zip

Mule Creek, NM 88061

County

Grant County

Type

Ranches, Horse Property, Recreational Land, Hunting Land

Latitude / Longitude

33.122594 / -108.972122

Acreage

15,704

Price

\$16,500,000

Property Website

<https://brgranches.com/property/mule-creek-ranch/grant/new-mexico/98211/>



PROPERTY DESCRIPTION

Mule Creek Ranch

Mule Creek, New Mexico

A Legacy Ranch Defined by Water, Wildlife, and Stewardship

Set amid the unspoiled landscapes of southwestern New Mexico, **Mule Creek Ranch** is a rare legacy offering in the highly coveted Mule Creek region. Combining exceptional water resources, productive ranching infrastructure, and premier wildlife habitat, this extraordinary property represents one of the finest cattle and sporting ranches in the Southwest.

The Land

Encompassing 15,704± acres, **Mule Creek Ranch** includes 8,385± deeded acres along with 7,256± acres of Gila National Forest grazing under the Tennessee Allotment. Elevations range from 4,600 feet along the Mule Creek valley to 6,263 feet atop Hanna Mountain, offering dramatic topography, sweeping views, and diverse ecosystems.

Rolling grasslands, wooded ridgelines, and fertile creek bottoms create both visual appeal and functional grazing. With an average annual rainfall of 14-16 inches, the ranch consistently supports strong forage production and healthy wildlife populations.

Water Resources

Water is the defining feature of **Mule Creek Ranch** and sets it apart from nearly every property in the region. The ranch boasts over 5.9 miles of year-round live water along Mule Creek, supported by a remarkable system of wells, springs, pipelines, and storage infrastructure.

Key water features include:

- 20 wells (solar, electric submersible, and wind-powered)
- 6 developed springs, including Mule Springs producing approximately 30 GPM
- A stocked fishing pond with crappie, catfish, and bass
- 8 miles of pipeline, 13 storage tanks, and 29 drinking tubs
- 25+ dirt tanks strategically placed across the ranch

This extensive water system ensures reliability, redundancy, and exceptional year-round distribution.

Ranch Operations

Mule Creek Ranch has been conservatively managed and historically supports approximately 300 head of mother cows year-round. Livestock operations are efficient and well-designed, with 40+ miles of interior and exterior fencing in excellent condition.

The ranch is divided into 11 primary pastures and 4 traps, allowing for flexible grazing rotation and ease of management. Infrastructure and layout reflect decades of thoughtful planning and careful stewardship.



Improvements

Improvements throughout the ranch are extensive, functional, and turnkey:

- 2,500± sq. ft. adobe owner's residence
- 1,000± sq. ft. guest quarters
- 50' x 50' barn
- 120' x 60' four-bay barn (one bay with concrete floor)
- 84' x 25' shop
- Five complete sets of working corrals, three with squeeze chutes, calf tables, and loading facilities

All improvements are well maintained and support both livestock operations and comfortable ranch living.

Wildlife & Recreation

The ranch offers exceptional sporting and recreational opportunities. Wildlife includes elk, mule deer, coues deer, bear, mountain lion, turkey, and quail (Gambel's and Montezuma), as well as a wide variety of ducks and other waterfowl. A resident herd of Rocky Mountain bighorn sheep further highlights the rarity of this property.

Mule Creek Ranch qualifies for unlimited landowner tags for elk, mule deer, and Coues deer. Ownership has historically practiced selective harvest, preserving trophy-quality wildlife and long-term habitat health.

Climate & Lifestyle

With a mild year-round climate-winter temperatures typically in the high 30s and summer highs in the upper 80s-**Mule Creek Ranch** offers comfortable living in every season. The setting provides privacy, tranquility, and an authentic Western lifestyle without sacrificing functionality or access.

A Rare Opportunity

Lightly stocked, exceptionally well-watered, and meticulously maintained, **Mule Creek Ranch** stands as a true legacy property. Opportunities of this caliber-particularly in the Mule Creek area-are exceedingly rare. This is a ranch defined by abundance, balance, and enduring value.

A Landscape Shaped by Time

Long before modern ranching, the Mule Creek area was defined by movement-of Native peoples, wildlife, and later, early settlers-drawn to the dependable water sources of Mule Creek and its surrounding springs. For Native cultures, these waters provided sustenance, seasonal refuge, and natural travel routes across the high desert landscape.

As the American frontier pushed west, early trails followed the same lifelines. Mule Creek became a known stopping point along regional travel routes, where homesteaders, stockmen, and travelers could rest animals, replenish water, and find shelter in the surrounding hills. These early trails and camps laid the groundwork for permanent settlement and working ranches that would soon follow.



Homestead-era ranching took hold in the late nineteenth and early twentieth centuries, shaped by isolation, self-reliance, and an intimate understanding of the land. Early ranch families built their livelihoods around the springs, creek bottoms, and natural grazing patterns, learning quickly that success depended on protecting water, rotating livestock, and respecting the limits of the range. Those frontier principles still define the landscape today.

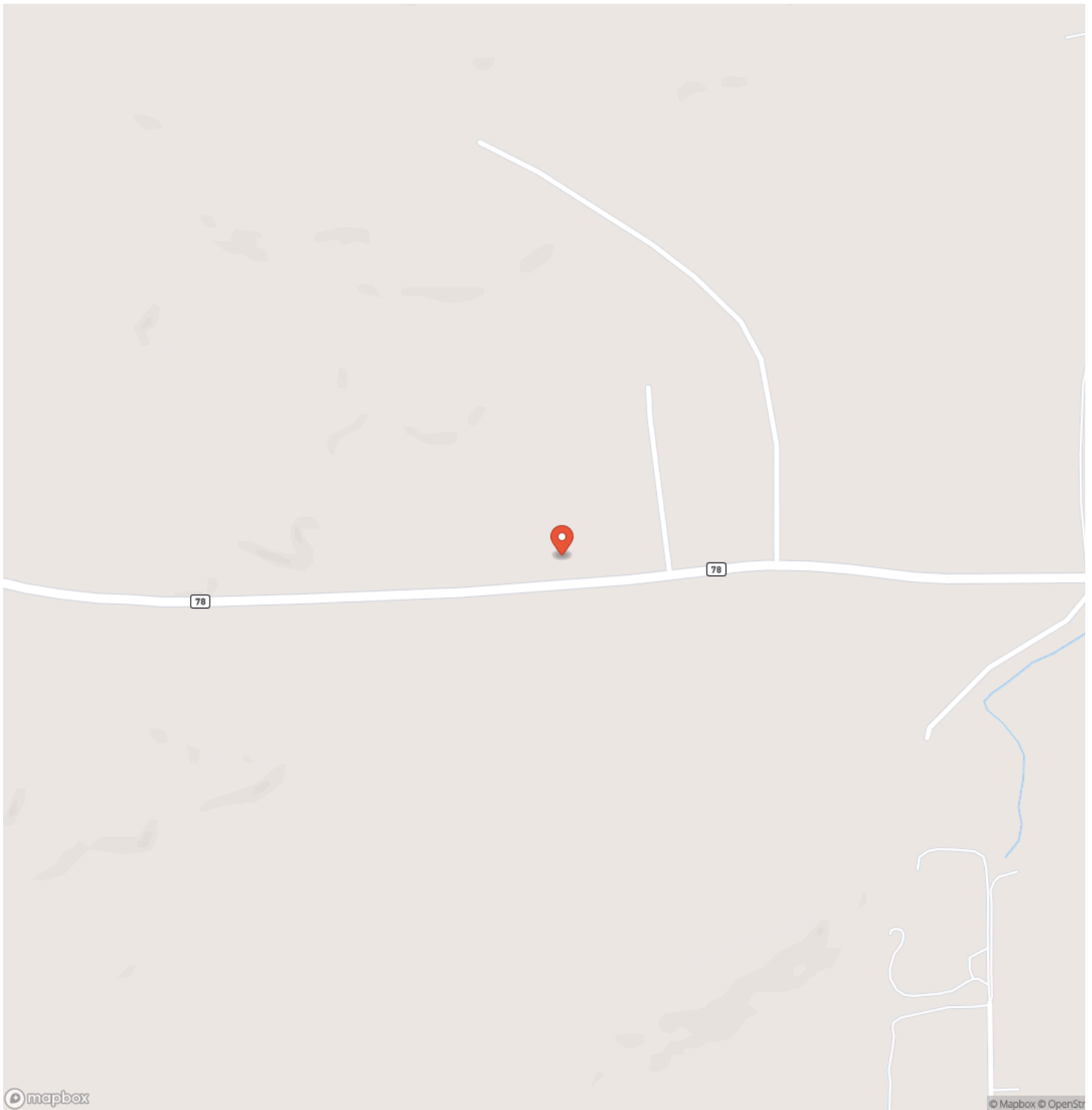
Mule Creek Ranch stands as a continuation of this heritage. The land remains guided by the same natural systems that once sustained early trails and homesteads-abundant water, diverse elevation, and resilient native grasses. Carefully improved and conservatively managed, the ranch honors the legacy of those who first recognized the enduring value of this remarkable place.



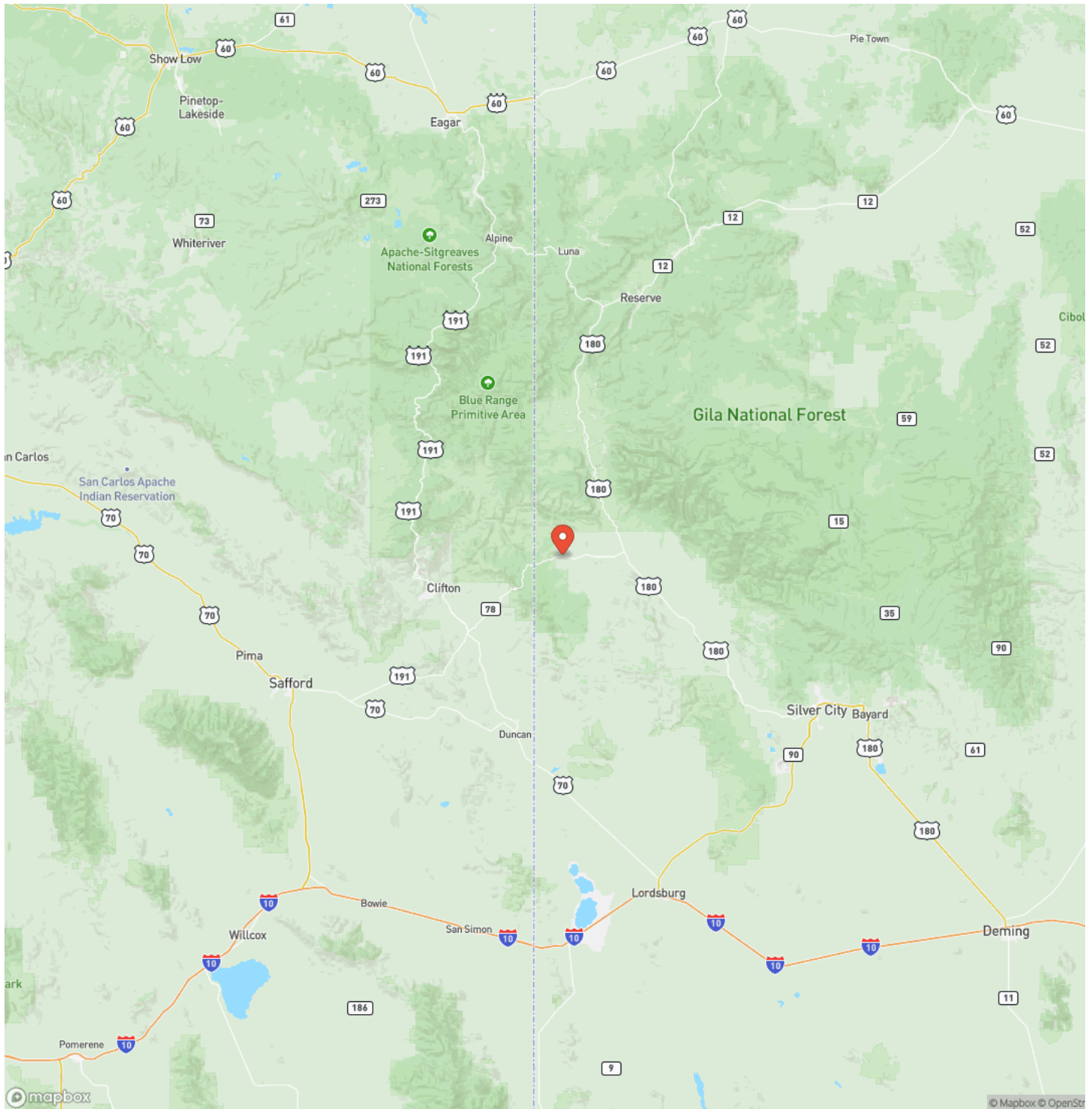
Mule Creek Ranch
Mule Creek, NM / Grant County



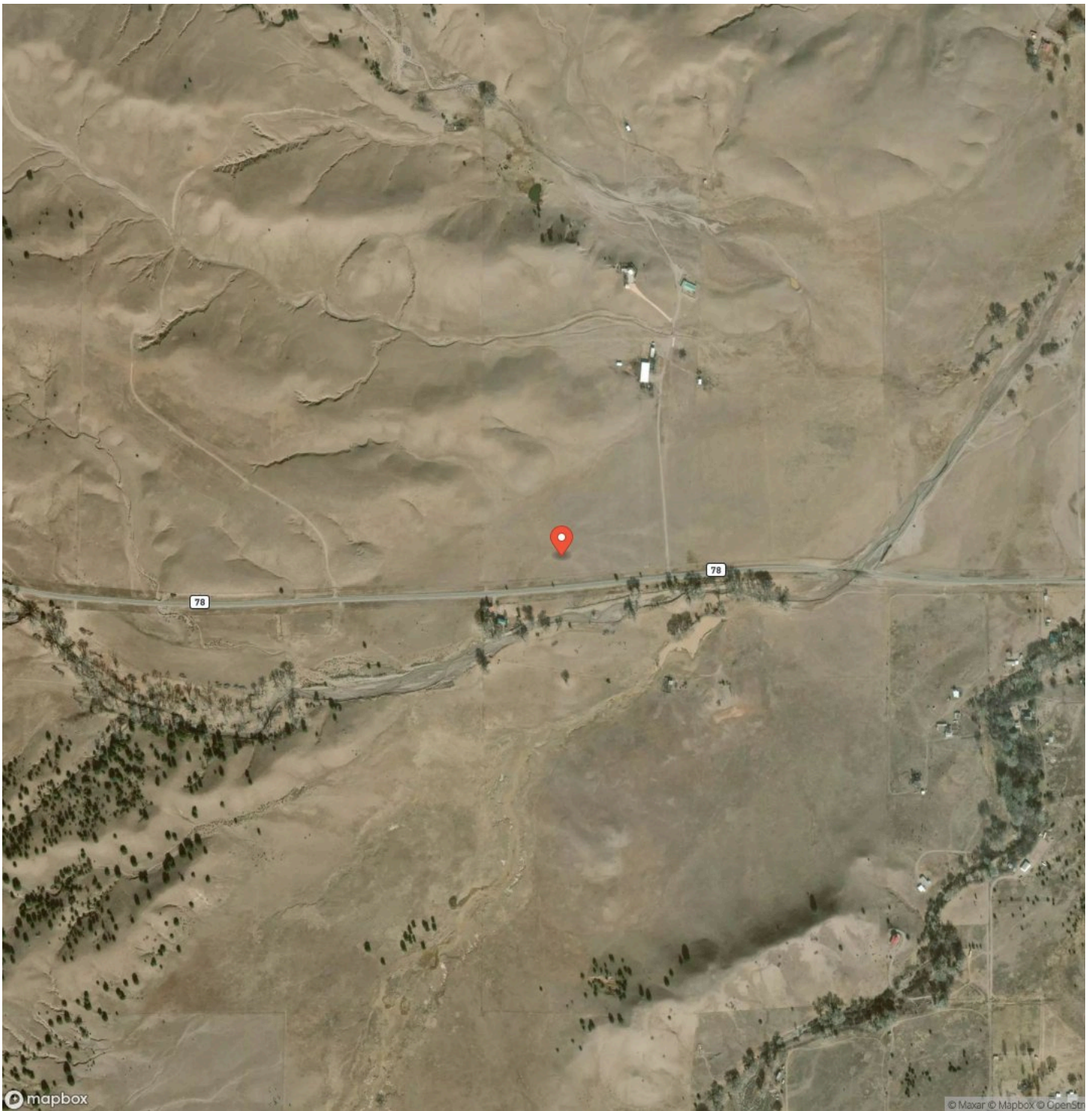
Locator Map



Locator Map



Satellite Map



DISCLAIMERS

Information in this brochure is provided solely for information purposes and does not constitute an offer to sell or advertise real estate outside the states in which broker or agent licensed. The information presented has been obtained from sources deemed to be reliable, but is not guaranteed or warranted by the agent, broker, or the sellers of these properties. This offering is subject to errors, omissions, prior sale, price change, correction or withdrawal from the market without notice. All references to age, square footage, income, expenses, acreage, carrying capacity, and land classification, etc. are approximate. Prospective buyers are chargeable with and expected to conduct their own independent investigation of the information and the property and to rely only on those results. Sellers reserve the right to accept or reject any and all offers without liability to any buyer or cooperating broker.

Maps are provided for illustration purposes only, the accuracy is not warranted. Parcels on interactive maps are not adjusted to match aerial backgrounds. This information is for reference purposes only and is not a legal document. Data maps contain errors. The seller and seller's agent are making known to all potential buyers that there may be variations between the location of the existing fence lines and the legal description of the deeded property. Seller and seller's agent make no warranties with regard to the location of the fence lines in relationship to the deeded property lines, nor does the Seller make any warranties or representations with regard to the specific acreage contained within the fenced property lines. Seller is selling the property in an "as is" condition, which includes the location of the fences as they exist. Boundaries shown on the accompanying maps are approximate, based on county parcel data. The maps are not to scale. The accuracy of the maps is not guaranteed. Prospective buyers are encouraged to verify fence lines, deeded property lines and acreages using a licensed surveyor at their own expense.



Beaverhead Ranch Group
7 Mustang Rd
Elephant Butte, NM 87935
(505) 328-2530
brgranches.com

