



**T R O P H Y**  
PROPERTIES AND AUCTION  
LAND | RECREATIONAL | RESIDENTIAL

# 45± Acre Income Producing Hunting Tract for Sale - Franklin County

www.TrophyPA.com • (855) 573-5263 • leads@trophyapa.com

**PRICE IMPROVED**



**PROPERTY ADDRESS:**

139 Haskell Road  
Quenemo, KS 66528

**PRICE:** 213,750

**ACRES:** 45±

**COUNTY:** Franklin

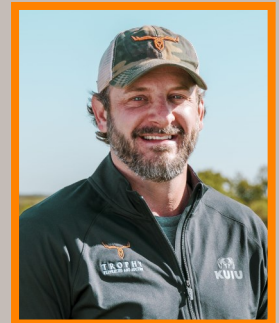
**PROPERTY HIGHLIGHTS:**

- 45 ± acres
- 39.74 acres tillable ground with a \$110 farming lease for 2024
- Deer & turkey on property
- Great neighbors
- Multiple building sites
- Electricity on south of property
- Just over 1 hour from Kansas City

**PROPERTY DESCRIPTION:**

Discover this exceptional property just over an hour from Kansas City. This 45± acre parcel of land, just east of Melvern, Kansas offering a great investment opportunity. With approximately 40 acres of tillable ground and proximity to I-35 this versatile property is ready for your ideas. It would be perfect for building your dream home or creating a relaxing getaway. There is an abundant amount of wildlife in the area that would be in your backyard daily. Schedule a visit today and experience the enchanting beauty of this unique property.

Owner/Agent



**PRESENTED BY:**

**SAM VOSS**

**Land Specialist**

M: (913) 526-9369

P: (855) 573-5263 x745

E: svoss@trophyapa.com

**Trophy Properties and Auction**

640 Cepi Drive

Suite 100

Chesterfield, MO 63005

www.Trophyapa.com

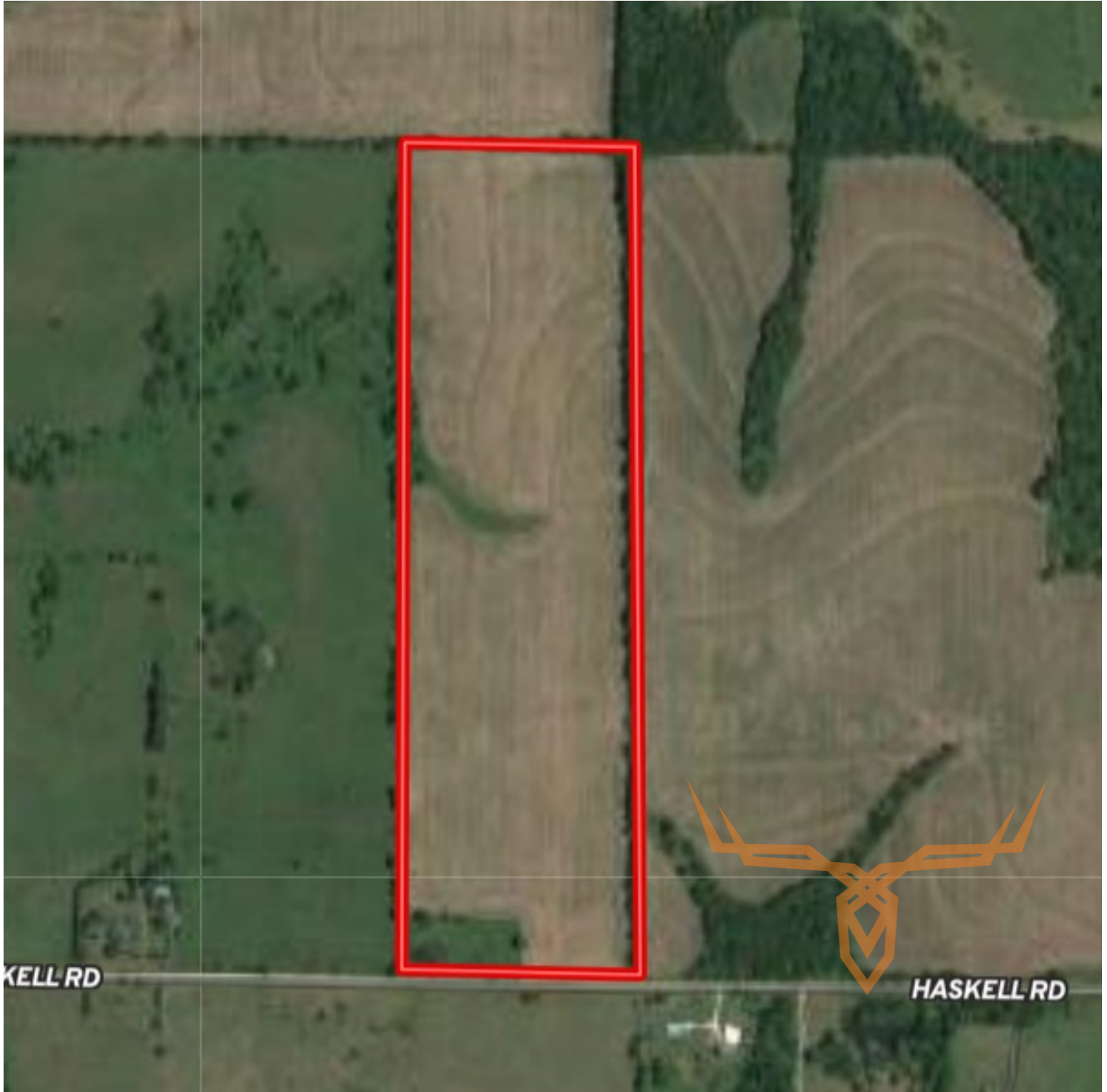
leads@trophyapa.com



# 45± Acre Income Producing Hunting Tract for Sale - Franklin County

**T R O P H Y**  
PROPERTIES AND AUCTION  
LAND | RECREATIONAL | RESIDENTIAL

[www.TrophyPA.com](http://www.TrophyPA.com) • (855) 573-5263 • [leads@trophy.com](mailto:leads@trophy.com)



Broker does not guarantee the accuracy of sq. ft., lot size, or other information, buyer is advised to independently verify the accuracy of information through personal